

| | | | | | | | |
|------------------|------|----------|------------|--------------|-----------------|------------|-----------------------|
| Engine & Cooling | Fuel | Ignition | Electrical | Running gear | Torque settings | Capacities | Notes & Illustrations |
|------------------|------|----------|------------|--------------|-----------------|------------|-----------------------|



Automotive Technical DATA BOOK

Click on one of the buttons above to view data for this car. To return to this screen and make another choice, click anywhere on the data screen.

MENU

HELP

Engine and cooling system Fiorino 1300 1988 to 1996

| | | |
|---|-----|----------------------|
| Type | | 146 A5.000 SOHC 49kW |
| Capacity (cm ³) / number of cylinders | | 1301 / 4 |
| Compression ratio / pressure | bar | 9.35±0.15 / _ |
| Oil pressure | bar | [3.4 to 4.9] |
| Oil temperature | °C | 100 |
| Valve clearance - inlet | mm | 0.30±0.05 |
| Valve clearance - exhaust | mm | 0.40±0.05 |
| Firing order | | 1-3-4-2 |
| No 1 cylinder position | | TBE |
| Thermostat opening temperature | °C | 80 to 84 |
| Radiator cap pressure | bar | 0.98 |

Fuel system Fiorino 1300 1988 to 1996

| | | |
|---|-----|------------------------------|
| Idle speed - manual [auto] | rpm | 850±50 |
| Fast idle speed - manual [auto] | rpm | _ |
| CO @ idle speed [3000 rpm] - see page VI | % | 1.0±0.5 |
| HC @ idle speed [3000 rpm] - see page VI | ppm | ≤1200 |
| CO ₂ @ idle speed [3000 rpm] - see page VI | % | _ |
| O ₂ @ idle speed [3000 rpm] - see page VI | % | _ |
| Carburettor / fuel injection | | Weber |
| Type / ref | | 30-32 DMTE 27/150. 91 ▶: 151 |
| Main jet / needle | | 92, 105 |
| Injection pressure | bar | _ |
| Pump pressure | bar | 0.15 to 0.20 |
| Octane rating | RON | 98[E 95 RON] |

Ignition system Fiorino 1300 1988 to 1996

| | | |
|---------------------------------|--------------------|-------------------|
| Type | | Electronic |
| Ignition coil | | Marelli BAE 506 A |
| Primary resistance | ohms | 0.756 to 0.924 |
| Ballast resistor | ohms | _ |
| Voltage - Tmnl 15(+) to earth | V | _ |
| Distributor | | Marelli |
| Points gap (air gap) | mm | [0.30 to 0.40] |
| Dwell angle | ° (%) | _ |
| Condenser capacity | µF | _ |
| Rotation | | Clockwise |
| Ignition timing - basic [static | ° Crankshaft @ rpm | 10 BTDC @ idle |
| V = Vacuum NV = No Vacuum | | NV |
| Total ignition advance | ° Crankshaft @ rpm | _ |
| | ° Crankshaft @ rpm | _ |
| | ° Crankshaft @ rpm | _ |
| Centrifugal check. | ° Crankshaft @ rpm | 0 @ 1400 to 1800 |
| | ° Crankshaft @ rpm | 7 to 11 @ 3000 |
| | ° Crankshaft @ rpm | 20 to 24 @ 5200 |
| Vacuum range check | mbar | 132 to 400 |
| Maximum vacuum advance | ° Crankshaft | 12 to 16 |
| Spark plugs | | Bosch/Champion |
| Type | | WR7DC / RN9YC |
| Electrode gap | mm | 0.70 to 0.80 |

Electrical system Fiorino 1300 1988 to 1996

| | | |
|---|-------------|--------------------------|
| Battery | V / CC / RC | 12 / 185 / 45Ah |
| Alternator voltage / full load current / engine rpm | | 14.0 to 14.3 / 45 / 3500 |
| Starter motor current / voltage - cranking | A / V | 170 / 9.4 |
| - locked | A / V | 330 to 350 / 6.7 to 7.1 |

Running gear Fiorino 1300 1988 to 1996

| | | |
|--|----|-----|
| Brakes - | | |
| Front (min. friction material thickness) | mm | 1.5 |
| Rear (min. friction material thickness) | mm | 1.5 |

| | | |
|----------------------------------|------|-----------|
| Tyres | | |
| Saloon | Size | _ |
| Estate / Van | Size | 165/70x13 |
| Pressure - front / rear - Saloon | bar | _ |
| - Estate / Van | bar | 1.9 / 1.9 |

Front suspension / wheel alignment

| | | |
|--------------------------|--------|--|
| Toe-in (+) / Toe-out (-) | mm [°] | -3.0±1.0 |
| Camber | | +1°50'±30'. 91 ▶: +35'±30' |
| Castor | | +30'±30'. Pick-up: +25'±30' ¹ |
| King pin inclination | | _ |

Rear suspension / wheel alignment

| | | |
|--------------------------|--------|----------------------------|
| Toe-in (+) / Toe-out (-) | mm [°] | +5.0±2.0 |
| Camber | | Van: -40'±30' ² |

Torque wrench settings Fiorino 1300 1988 to 1996

| | | |
|-------------------------|----|-------------------|
| Cylinder head - stage 1 | Nm | 65 ³ |
| - stage 2 | Nm | + 90 ³ |
| Cylinder head - stage 3 | Nm | + 90 ³ |
| - stage 4 | Nm | _ |
| Big-end bearings | Nm | 51 |
| Main bearings | Nm | 80 |
| Clutch cover | Nm | 16 |
| Flywheel [driveplate] | Nm | 83 |
| Front hubs | Nm | 216 |
| Rear hubs | Nm | 216 |
| Wheel nuts / bolts | Nm | 86 |
| Spark plugs | Nm | 25 to 30 |

Capacities Fiorino 1300 1988 to 1996

| | | |
|---------------------------------|--------|----------------|
| Engine oil & filter | litres | 3.5 |
| Gearbox - 4-speed [5-speed] | litres | 3.0. 91 ▶: 3.4 |
| Automatic transmission - refill | litres | _ |
| Final drive | litres | WT |
| Cooling system | litres | 5.0. 91 ▶: 5.5 |
| Fuel tank | litres | 54 |

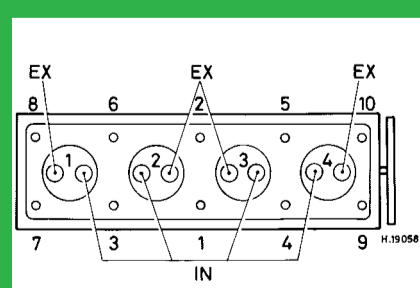
Notes and Illustrations

¹Combi: +25'±30'

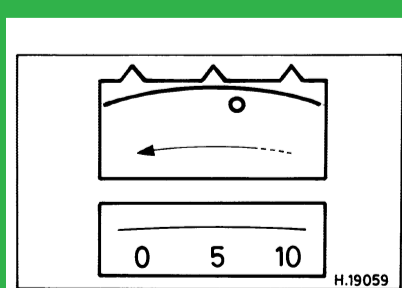
²Combi: -55'±30'. PU: -45'±30'. 91 ▶: Van: -1°±30'. Combi: -1°10'±30'. PU: -40'±30'

³NUTS: 65 + 40° + 40°

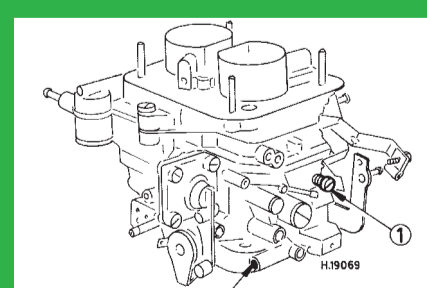
1: Idle speed 2: CO / Mixture



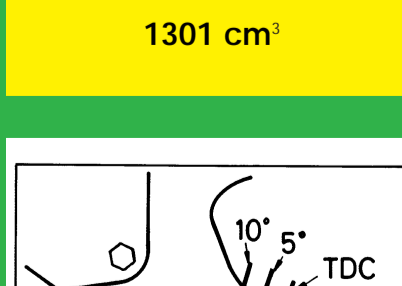
1301 cm³



1301 cm³



Weber DMTE



1301 cm³, alternative