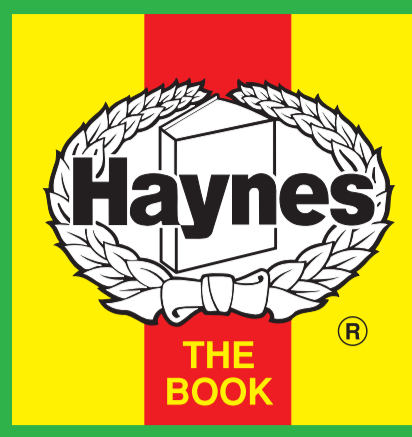


Engine & Cooling	Fuel	Ignition	Electrical	Running gear	Torque settings	Capacities	Notes & Illustrations
------------------	------	----------	------------	--------------	-----------------	------------	-----------------------



Automotive Technical DATA BOOK

Click on one of the buttons above to view data for this car. To return to this screen and make another choice, click anywhere on the data screen.

MENU

HELP

Engine and cooling system Micra 1.0 (K10) 1990 to 1993

Type		MA10S SOHC 40kW
Capacity (cm ³) / number of cylinders		988 / 4
Compression ratio / pressure	bar	10.3 / ≥12.3
Oil pressure	bar	[2.9]
Oil temperature	°C	–
Valve clearance - inlet	mm	0.25 H
Valve clearance - exhaust	mm	0.30 H
Firing order		1-3-4-2
No 1 cylinder position		TBE
Thermostat opening temperature	°C	88
Radiator cap pressure	bar	0.90

Fuel system Micra 1.0 (K10) 1990 to 1993

Idle speed - manual [auto]	rpm	800±50. A/C: 850±50
Fast idle speed - manual [auto]	rpm	1700 to 2100 [1800 to 2200]
CO @ idle speed [3000 rpm] - see page VI	%	1.5±0.5
HC @ idle speed [3000 rpm] - see page VI	ppm	≤1200
CO ₂ @ idle speed [3000 rpm] - see page VI	%	–
O ₂ @ idle speed [3000 rpm] - see page VI	%	–
Carburettor / fuel injection		Hitachi
Type / ref		DCZ306-87
Main jet / needle		93, 130
Injection pressure	bar	–
Pump pressure	bar	0.20 to 0.27
Octane rating	RON	95[E 95 RON]

Ignition system Micra 1.0 (K10) 1990 to 1993

Type		Electronic
Ignition coil		Mitsubishi. Hitachi
Primary resistance	ohms	1.0 to 1.2
Ballast resistor	ohms	–
Voltage - Tmnl 15(+) to earth	V	–
Distributor		Hitachi/Mitsubishi
Points gap (air gap)	mm	[0.30 to 0.45]
Dwell angle	° (%)	–
Condenser capacity	µF	–
Rotation		Anticlockwise
Ignition timing - basic [static	° Crankshaft @ rpm	4±1 BTDC @ idle
V = Vacuum NV = No Vacuum		NV
Total ignition advance	° Crankshaft @ rpm	11±5 BTDC @ idle
	° Crankshaft @ rpm	–
	° Crankshaft @ rpm	–
Centrifugal check.	° Crankshaft @ rpm	0 @ 1590 to 2000
	° Crankshaft @ rpm	–
	° Crankshaft @ rpm	13 to 17 @ 4800
Vacuum range check	mbar	107 to 313 ¹
Maximum vacuum advance	° Crankshaft	16. AT: 11
Spark plugs		NGK/Champion
Type		BPR5ES / RN9YC
Electrode gap	mm	0.80 to 0.90

Electrical system Micra 1.0 (K10) 1990 to 1993

Battery	V / CC / RC	12 / 45Ah
Alternator voltage / full load current / engine rpm		14.1 to 14.7 / _ / 2500
Starter motor current / voltage - cranking	A / V	55 [AT: 65] / 11.5 (no load)
- locked	A / V	–

Running gear Micra 1.0 (K10) 1990 to 1993

Brakes -		
Front (min. friction material thickness)	mm	2.0
Rear (min. friction material thickness)	mm	1.5

Tyres		
Saloon	Size	145x12: 155x12: 155/70x13
Estate / Van	Size	–
Pressure - front / rear - Saloon	bar	2.1 / 2.2
- Estate / Van	bar	–

Front suspension / wheel alignment

Toe-in (+) / Toe-out (–)	mm [°]	+2.0 to 4.0
Camber		-25' to +1°5' N/A
Castor		+1°30' to 3° N/A
King pin inclination		+12°25' to 13°55' N/A

Rear suspension / wheel alignment

Toe-in (+) / Toe-out (–)	mm [°]	–
Camber		–

Torque wrench settings Micra 1.0 (K10) 1990 to 1993

Cylinder head - stage 1	Nm	34 to 39
- stage 2	Nm	64 to 69
Cylinder head - stage 3	Nm	–
- stage 4	Nm	–
Big-end bearings	Nm	29 to 34
Main bearings	Nm	46 to 52 in stages
Clutch cover	Nm	22 to 29
Flywheel [driveplate]	Nm	59 to 69 ²
Front hubs	Nm	147 to 206
Rear hubs	Nm	186 to 255
Wheel nuts / bolts	Nm	78 to 98
Spark plugs	Nm	25 to 29

Capacities Micra 1.0 (K10) 1990 to 1993

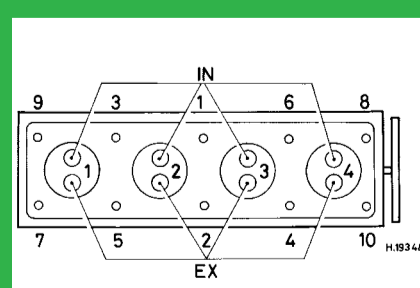
Engine oil & filter	litres	2.8
Gearbox - 4-speed [5-speed]	litres	2.6
Automatic transmission - refill	litres	6.0
Final drive	litres	WT
Cooling system	litres	4.7
Fuel tank	litres	40

Notes and Illustrations

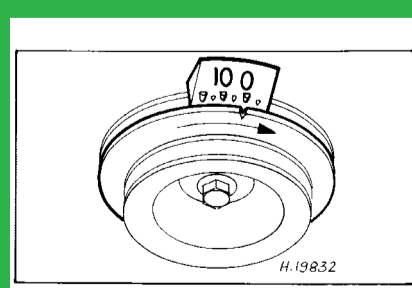
¹[AT: 153 to 347]

²[70 to 80]

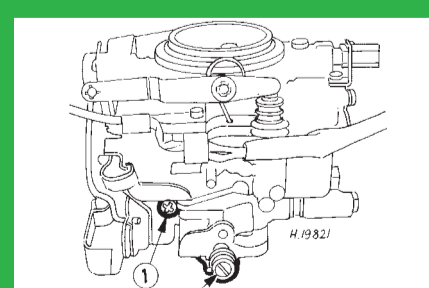
1: Idle speed 2: CO / Mixture



988 cm³



988 cm³



Hitachi DCZ