

[Engine & Cooling](#)
[Fuel](#)
[Ignition](#)
[Electrical](#)
[Running gear](#)
[Torque settings](#)
[Capacities](#)
[Notes & Illustrations](#)



# Automotive Technical DATA BOOK

Click on one of the buttons above to view data for this car. To return to this screen and make another choice, click anywhere on the data screen.

MENU

HELP

## Engine and cooling system Vanette (C22) 1986 to 1991

Type	A15S OHV 52kW	
Capacity (cm <sup>3</sup> ) / number of cylinders	1488 / 4	
Compression ratio / pressure	bar	9.0 / ≥9.8
Oil pressure	bar	[2.9 to 3.9]
Oil temperature	°C	80
Valve clearance - inlet	mm	0.35 H
Valve clearance - exhaust	mm	0.35 H
Firing order	1-3-4-2	
No 1 cylinder position	TCE	
Thermostat opening temperature	°C	82
Radiator cap pressure	bar	0.78 to 0.98

## Fuel system Vanette (C22) 1986 to 1991

Idle speed - manual [auto]	rpm	700±50
Fast idle speed - manual [auto]	rpm	1800 to 2350
CO @ idle speed [3000 rpm] - see page VI	%	1.5±0.5
HC @ idle speed [3000 rpm] - see page VI	ppm	≤1200
CO <sub>2</sub> @ idle speed [3000 rpm] - see page VI	%	-
O <sub>2</sub> @ idle speed [3000 rpm] - see page VI	%	-
Carburettor / fuel injection	Hitachi	
Type / ref	DCZ306-24	
Main jet / needle	101, 130	
Injection pressure	bar	-
Pump pressure	bar	0.20 to 0.27
Octane rating	RON	88[R]

## Ignition system Vanette (C22) 1986 to 1991

Type	Contact breaker - CIS	
Ignition coil	H5-13-49. STC-137	
Primary resistance	ohms	1.0 to 1.4
Ballast resistor	ohms	1.6
Voltage - Tmnl 15(+) to earth	V	-
Distributor	Hitachi/Mitsubishi	
Points gap (air gap)	mm	0.45 to 0.55
Dwell angle	° (%)	49 to 55
Condenser capacity	µF	0.20 to 0.24
Rotation	Anticlockwise	
Ignition timing - basic [static	° Crankshaft @ rpm	7±2 BTDC @ 700±50
V = Vacuum NV = No Vacuum	NV	
Total ignition advance	° Crankshaft @ rpm	-
	° Crankshaft @ rpm	-
	° Crankshaft @ rpm	-
Centrifugal check.	° Crankshaft @ rpm	0 @ 1200 to 1560
	° Crankshaft @ rpm	-
	° Crankshaft @ rpm	22 to 26 @ 4800
Vacuum range check	mbar	127 to 427
Maximum vacuum advance	° Crankshaft	25 to 27
Spark plugs	NGK/Champion	
Type	BP5ES / N9YC	
Electrode gap	mm	0.80 to 0.90

## Electrical system Vanette (C22) 1986 to 1991

Battery	V / CC / RC	12 / 30, 50, 60Ah
Alternator voltage / full load current / engine rpm	14.1 to 14.7 / 35,50,60 / 2500	
Starter motor current / voltage - cranking	A / V	60 / 11.5 (no load)
- locked	A / V	-

## Running gear Vanette (C22) 1986 to 1991

<b>Brakes -</b>		
Front (min. friction material thickness)	mm	2.0
Rear (min. friction material thickness)	mm	1.5

<b>Tyres</b>		
Saloon	Size	-
Estate / Van	Size	165x14: 195/70x14
Pressure - front / rear - Saloon	bar	-
- Estate / Van	bar	3.0 / 3.0

## Front suspension / wheel alignment

Toe-in (+) / Toe-out (-)	mm [°]	+2.0 to 4.0
Camber	-15' to +45'	
Castor	+1°10' to 2°10'	
King pin inclination	+9° to 10°	

## Rear suspension / wheel alignment

Toe-in (+) / Toe-out (-)	mm [°]	-
Camber	-	

## Torque wrench settings Vanette (C22) 1986 to 1991

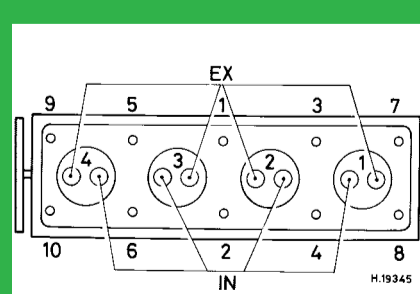
Cylinder head - stage 1	Nm	29 to 34
- stage 2	Nm	49 to 54
Cylinder head - stage 3	Nm	69 to 74
- stage 4	Nm	-
Big-end bearings	Nm	31 to 37
Main bearings	Nm	49 to 59
Clutch cover	Nm	22 to 29
Flywheel [driveplate]	Nm	78 to 88
Front hubs	Nm	WSM
Rear hubs	Nm	-
Wheel nuts / bolts	Nm	98 to 118
Spark plugs	Nm	20 to 29

## Capacities Vanette (C22) 1986 to 1991

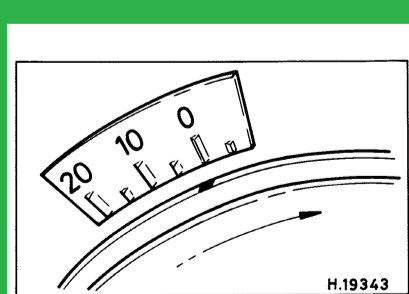
Engine oil & filter	litres	3.1
Gearbox - 4-speed [5-speed]	litres	1.3 [1.2]
Automatic transmission - refill	litres	-
Final drive	litres	1.0. Bus: 1.1
Cooling system	litres	5.0
Fuel tank	litres	55

## Notes and Illustrations

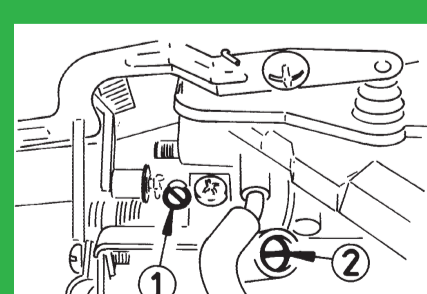
1: Idle speed    2: CO / Mixture



1488 cm<sup>3</sup>



1488 cm<sup>3</sup>



Hitachi DCZ