

Metric and English Units Compared

Units

1 kilometer (km)	=	1000 meters (m)
1 meter (m)	=	100 centimeters (cm)
1 centimeter (cm)	=	0.39 inch (in.)
1 mile (mi)	=	5280 feet (ft)
1 foot (ft)	=	12 inches (in.)
1 inch (in.)	=	2.54 centimeters (cm)
1 square mile (mi ²)	=	640 acres (a)
1 kilogram (kg)	=	1000 grams (g)
1 pound (lb)	=	16 ounces (oz)
1 fathom	=	6 feet (ft)

Conversions

When you want to convert: multiply by: to find:

Length

inches	2.54	centimeters
centimeters	0.39	inches
feet	0.30	meters
meters	3.28	feet
yards	0.91	meters
meters	1.09	yards
miles	1.61	kilometers
kilometers	0.62	miles

Area

square inches	6.45	square centimeters
square centimeters	0.15	square inches
square feet	0.09	square meters
square meters	10.76	square feet
square miles	2.59	square kilometers
square kilometers	0.39	square miles

Volume

cubic inches	16.38	cubic centimeters
cubic centimeters	0.06	cubic inches
cubic feet	0.028	cubic meters
cubic meters	35.3	cubic feet
cubic miles	4.17	cubic kilometers
cubic kilometers	0.24	cubic miles
liters	1.06	quarts
liters	0.26	gallons
gallons	3.78	liters

Masses and Weights

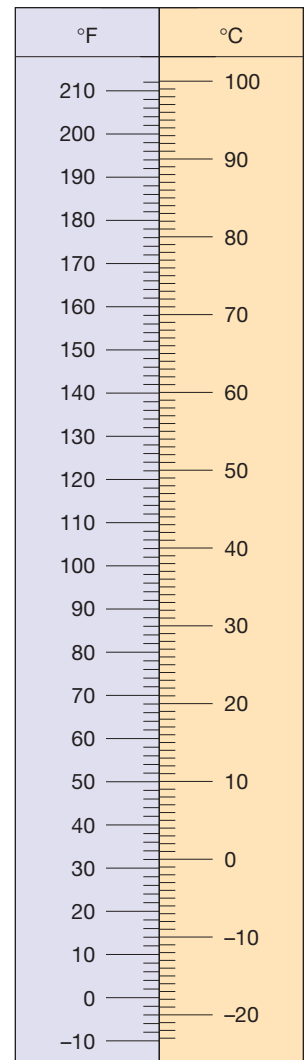
ounces	28.35	grams
grams	0.035	ounces
pounds	0.45	kilograms
kilograms	2.205	pounds

Temperature

When you want to convert degrees Fahrenheit (°F) to degrees Celsius (°C), subtract 32 degrees and divide by 1.8.

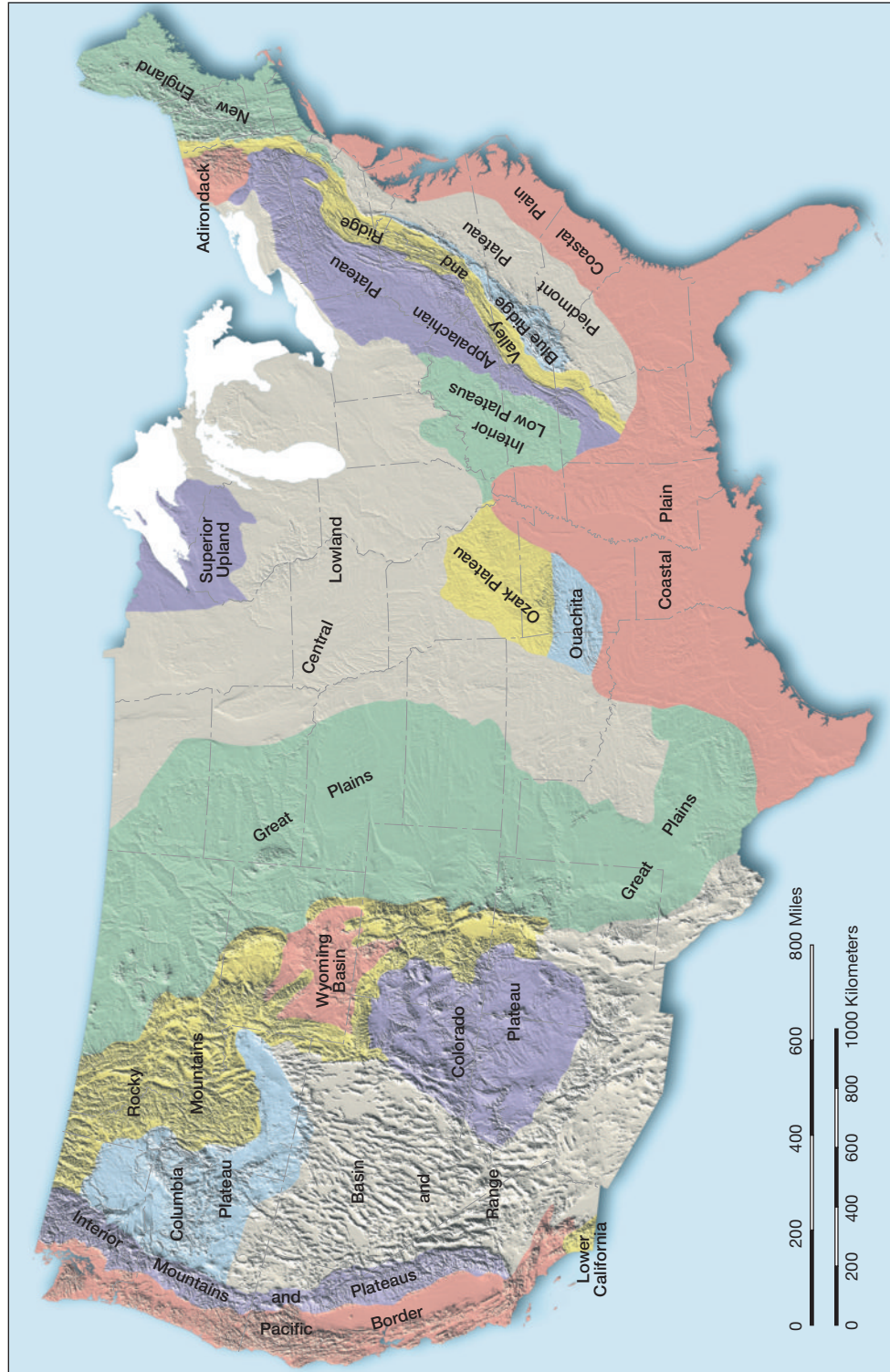
When you want to convert degrees Celsius (°C) to degrees Fahrenheit (°F), multiply by 1.8 and add 32 degrees.

When you want to convert degrees Celsius (°C) to Kelvins (K), delete the degree symbol and add 273. When you want to convert Kelvins (K) to degrees Celsius (°C), add the degree symbol and subtract 273.

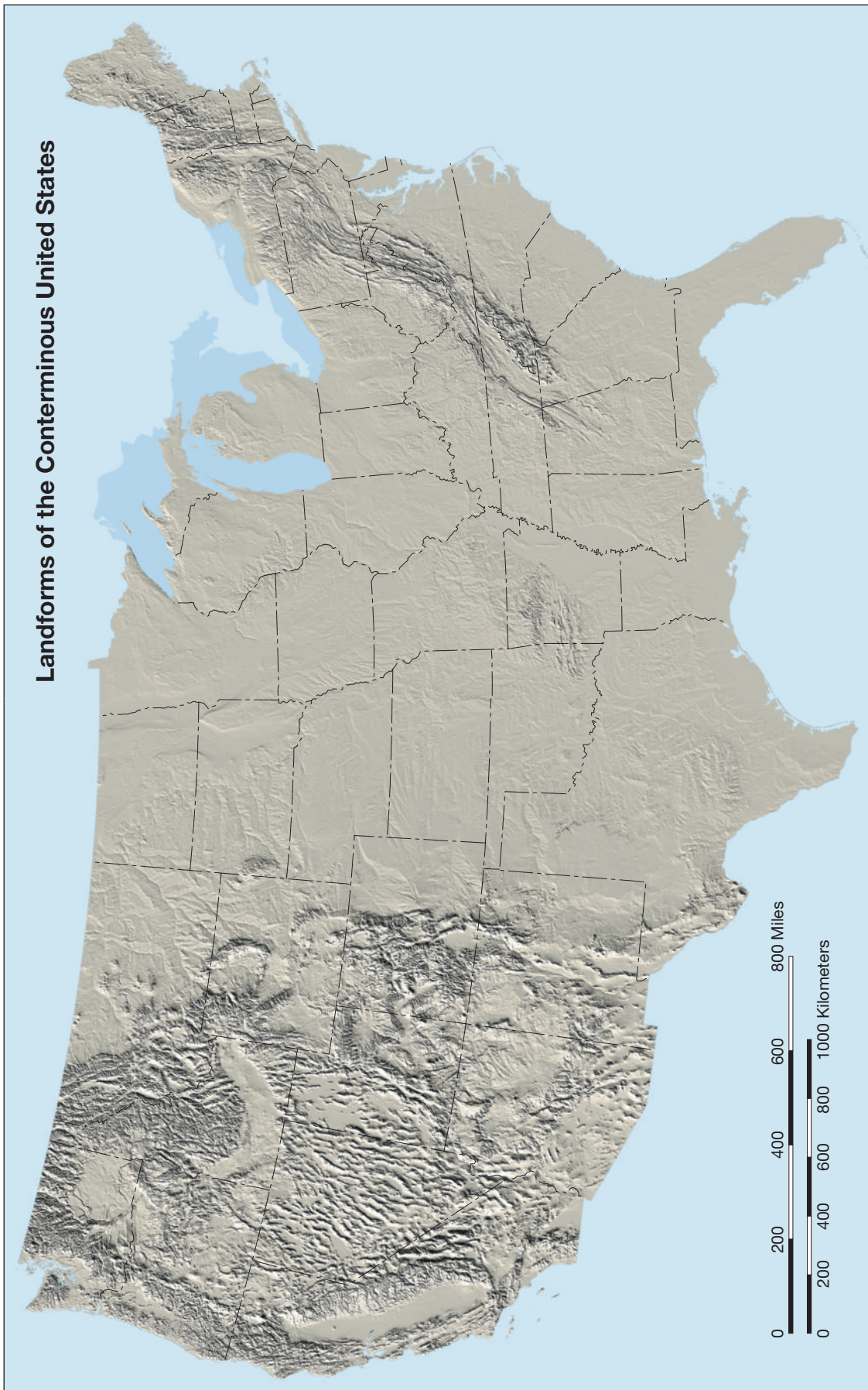


► **FIGURE A.1** A comparison of Fahrenheit and Celsius temperature scales.

Landforms of the Conterminous United States



▲ FIGURE B.1 Outline map showing major landform regions of the United States.



▲ **FIGURE B.2** Digital shaded relief landform map of the United States. (Data provided by the U.S. Geological Survey)