

Defense Department Briefing on Priore Treatment to counter Biological Warfare

SLIDE LIST

Solutions to Mass Casualties Treatment Problem

Threat and Current Status

1. [Title Page](#)
2. [Key Points in the New Technology](#)
3. [Title Page](#)
4. [Title Page](#)
5. [The Terrorist Threat](#)
6. [The Superpower Paradox: Asymmetric Cheap WMD Strategic Strike and Destruction](#)
7. [Mass Casualty Problem: Aerial Anthrax Spray on Washington, D.C.](#)
8. [Present Status of the WMD Threat to the United States](#)
9. [Some Present Problems in the WMD Defense Capabilities](#)

Historical Solution: Priore Treatment Therapy

10. [Title Page](#)
11. [Priore's laboratory device for treating small animals](#)
12. [Antoine Priore with the Mayor of Bordeaux](#)
13. [Raymond Pautrizel, eminent French parasitologist, who worked with Priore](#)
14. [12-Foot plasma tube in Priore's large device](#)
15. [Priore's 3 1/2 stories high device for whole body treatment of humans](#)
16. [Mechanism of the Priore therapy](#)
17. [Priore's therapeutic methodology: using infolded longitudinal EM waves as NLO pump waves, to pump in the time domain](#)
18. [Drastically reduced cumulative deterioration after Priore therapy](#)

Extended Physics and Background

19. [Title Page](#)
20. [Founders of Scalar Electromagnetics](#)
21. [Subdivisions of Soviet Energetics](#)

22. [Bunge on the Status of Classical and Quantum Physics](#)
23. [Einstein on Reviewing Foundations](#)
24. [Fields and Potentials have been "defined" only in and on matter](#)
25. [Maxwell's Equations are Matter-To-Matter Transforms](#)
26. [Electrodynamicists' Reaction to Removal of the Material Ether](#)
27. [The Missing Infolded Electrodynamics](#)
28. [Nonlinear Optics Distortion Correction Theorem](#)
29. [Infolded longitudinal EM biwave composition of a scalar potential](#)
30. [The Zero-Vector Axiom Destroys "Topologies Within Topologies"](#)
31. [Stoney-Whittaker Bidirectional Longitudinal EM Wave-Pair](#)
32. [Undistorted Progressive Waves \(UPWs\)](#)
33. [Velocity modulating a longitudinal EM wave oscillates rate of flow of time](#)
34. [The Graviton is a Coupled Photon/Antiphoton Pair](#)
35. [Mechanism for Physical Change and the Flow of Time](#)
36. [Any EM Field or Wave Pattern is Produced by interference of Two Scalar Potential Functions \(E.T. Whittaker, 1904\)](#)
37. [Mass is transparent to longitudinal EM waves, which move through the infolded interiors of internal waves, potentials, and fields in the mass](#)
38. [Deep penetration of weak signals in a dense signal environment, by nonlinear retroreflection](#)
39. [The Immune System](#)
40. [Popp's master cellular control system](#)
41. [Cancer: characteristics](#)
42. [The evolutionary path of multicellular organisms](#)
43. [Effect of fluid contamination on hemoglobin's oxygen transport](#)
44. [First step in Self-Promotion of Cancer due to Hypoxia](#)
45. [Becker's Cellular Growth Control](#)
46. [Becker's dc treatment of bone fractures](#)
47. [Becker's theoretical DC control system involved with responses to injury](#)
48. [Becker's theoretical control system governing regeneration](#)
49. [Link Between Standing DC Potentials and the Nervous System](#)
50. [Becker's Findings on Cellular Injury and Regeneration](#)
51. [Corrections For the Present EM Bioeffects Model](#)
52. [R&R System - Regeneration Example](#)
53. [Kaznachejev's Cytopathogenic Mirror Effect](#)
54. [Microwave Radiation of U.S. Embassy in Moscow](#)

55. [Self-Targeting in Inner EM Channel Can Produce a Quantum Potential](#)
56. [Quantum potential and hidden variable theory](#)
57. [Participants in a quantum potential share a common multiply-connected spacetime \(MCST\)](#)
58. [Gulf War Syndrome and Typical Comparative Disease Curves](#)
59. [Force Fields and Symmetry](#)
60. [Aspects of Strong Local Asymmetry](#)
61. [Other Aspects of Strong Local Asymmetry](#)
62. [Small Entities Emit Powerful S-Flows](#)
63. [What is the "magnitude" of a potential?](#)
64. [Table A1. The Vacuum Energetically Interacts With Every Particle, Continually](#)
65. [Extended Superpotential Theory \(Adding Vacuum Engines\)](#)
66. [Vacuum Engine: Jillions of Working ST Demons](#)
67. [Active Spacetime and a Specific Vacuum Engine \(A General Relativistic Concept and Analogy\)](#)
68. [Extension of Wheeler's general relativity principle](#)
69. [Signal versus Vacuum Engine](#)
70. [Electronuclear Interactions by Vacuum Engines](#)
71. [Vacuum Engineering](#)
72. [Impact of Vacuum Engineering](#)
73. [A Dramatic Extension to Nonlinear Optical Pumping](#)
74. [Time Conservation and Some Properties \(Energy and time are canonical\)](#)
75. [A Dramatic Extension to Nonlinear Optical Pumping](#)
76. [Key Points in the New Technology](#)

Modern WMD Solution: Portable Treatment Systems

77. [Title Page](#)
78. [Portable Priore-Type Treatment System](#)
79. [Portable System Block Diagram](#)
80. [Portable Priore Technology Unit](#)
81. [Saving the Stricken Civilians](#)

Conclusions: Technology Practical, Proven

82. [Title Page](#)
83. [Summary and Conclusions](#)

Recommendation: Crash Development Program

84. [Title Page](#)
85. [Recommend implementing:](#)
86. [Final Thoughts](#)



*Terrorist WMD Strikes
on U.S. Cities:*



Solution to Mass Casualties Treatment Problem

CTEC, Inc.

28 Mar. 1998

© 1998 T.E. BEARDEN

[Return
to
Slide
Index](#)

[Next
Slide](#)

Key Points in the New Technology

- There is a vast new kind of electrodynamics hidden inside all EM potentials, fields, and waves
 - Longitudinal EM waves and complexes
 - Oscillations in time domain
- These complexes are an infolded general relativity
 - Clustered formations of spacetime curvatures
 - Very powerful, since the EM force is used as the agent of curvature
- In general relativity, similar precise complexes permeate and act on any mass at all internal levels
- With this approach, one can now manipulate matter -- living or inert -- in any manner desired, depending only on the level of development of the technology
- Priore unwittingly used this to cure dread diseases
- This is a revolution in all of science
- We have uncovered the major mechanisms to utilize



[Return to Slide Index](#)

[Next Slide](#)

[Previous Slide](#)

© T.E. BEARDEN 1998



Terrorist WMD Strikes on U.S. Cities:



Solution to Mass Casualties Treatment Problem

- *Threat and Current Status*
- *Historical Solution: Priore Treatment Therapy*
- *Extended Physics and Background*
- *Modern WMD Solution: Portable Treatment Systems*
- *Conclusions: Technology Practical, Proven*
- *Recommendation: Crash Development Program*

CTEC, Inc.

28 Mar. 1998

[Return
to Slide
Index](#)

[Next
Slide](#)

[Previous
Slide](#)

© 1998 T.E. BEARDEN



Terrorist WMD Strikes on U.S. Cities:



Solution to Mass Casualties Treatment Problem

- ***Threat and Current Status***
- *Historical Solution: Priore Treatment Therapy*
- *Extended Physics and Background*
- *Modern WMD Solution: Portable Treatment Systems*
- *Conclusions: Technology Practical, Proven*
- *Recommendation: Crash Development Program*

CTEC, Inc.

28 Mar. 1998

[Return
to Slide
Index](#)

[Next
Slide](#)

[Previous
Slide](#)

© 1998 T.E. BEARDEN

THE TERRORIST THREAT



TODAY:

- Sabotage
- Chemicals
- Biological agents
- Nuclear materials
- Powerful explosives
- Assassination
- Kidnapping and hostages
- Contamination
- Shoulder-fired AD missiles
- Terrorism

[Return to Slide Index](#)

[Next Slide](#)

[Previous Slide](#)

FUTURE ADDITIONS:

- EM weapons
- EM biological warfare
- Scalar EM weapons
- Scalar EM disease induction
- Alteration of behavior and emotions
- Alteration of memory
- Direct thought control
- Action-at-a-distance effects

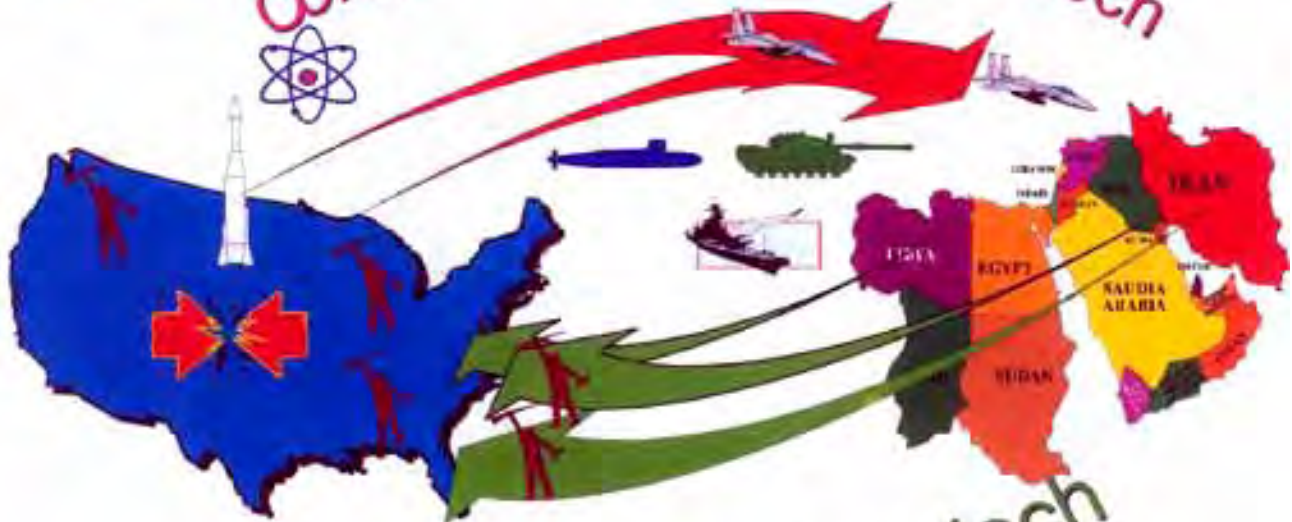


© 1993 1996 T.E. BEARDEN

The Superpower Paradox: Asymmetric Cheap WMD Strategic Strike and Destruction



Complex, expensive, high tech



Simple, cheap, low tech

© 1993, 1996, 1998 T.E. SEARDEN

[Return to Slide Index](#)

[Next Slide](#)

[Previous Slide](#)

Mass Casualty Problem: Aerial Anthrax Spray on Washington, D.C.

- **One terrorist, one light aircraft with spray tank**
- **100 kilograms of anthrax**
- **Flies over greater metropolitan Washington, D.C.**
- **Calm night**
- **1-3 million casualties result***
- **Most of those stricken will die**
- **Presently little can be done to save the stricken civilians**
- **Attacks on several population centers might produce some 10 million or more casualties**



© 1998 T.E. BEAVER

*Per OTA Report to Congress, 1993

[Return to Slide Index](#)

[Next Slide](#)

[Previous Slide](#)

Present Status of the WMD Threat to the United States

- Many foreign nations are hostile to the U.S. and sponsor terrorists
- Some 25 nations have WMD or are acquiring them
 - BW agents and weapons
 - Chemical agents and weapons
 - Nuclear materials and weapons
- Thousands of students and emigres
- Infiltrated teams, BW, other WMD already
- Castro guerrillas infiltrated over the years
- Can do unacceptable damage to U.S. now
- May reach first strike knockout capability



[Return to Slide Index](#)

[Next Slide](#)

[Previous Slide](#)

© 1998 T.E. BEARDEN

*Per OTA Report to Congress, 1993

Some Present Problems in the U.S. WMD Defense Capabilities

- **No shelters (require overpressure, BW filtering, masks, showers, supplies)**
- **No stockpiled vaccines, medical supplies, immunoglobulins, masks, suits, food, fuel, generators, heaters, water purification units**
- **Totally insufficient medical facilities, personnel, and emergency response teams**
- **Triage, full martial law will be required**
- **No answer to massive decontamination problem**
- **State, county, city inadequately staffed and insufficiently trained for mass casualties**
- **Terrorist teams, BW agents, other WMD on site, waiting**
- **Water supplies, food, crops, farm animals also vulnerable**
- **Electric power grid, bridges, trains, railroads vulnerable**
- **Present medical science cannot save very many of the casualties, now or in the foreseeable future**



[Return to Slide Index](#)

[Next Slide](#)

[Previous Slide](#)



Terrorist WMD Strikes on U.S. Cities:



Solution to Mass Casualties Treatment Problem

- *Threat and Current Status*
- *Historical Solution: Priore Treatment Therapy*
- *Extended Physics and Background*
- *Modern WMD Solution: Portable Treatment Systems*
- *Conclusions: Technology Practical, Proven*
- *Recommendation: Crash Development Program*

CTEC, Inc.

28 Mar. 1998

[Return
to Slide
Index](#)

[Next
Slide](#)

[Previous
Slide](#)

© 1998 T.E. BEARDEN



Priore's laboratory device for treating small animals



[Return to Slide Index](#)

[Next Slide](#)

[Previous Slide](#)



Photo courtesy of Bob Whitney

Antoine Priore (right) with the Mayor of Bordeaux, Mr. Chaban-Delmas.

The Priore technical mechanism unwittingly involved a dramatic extension to both nonlinear optics and general relativity. However, nonlinear optics itself had not yet been born in the 1950s and 1960s when Priore worked out his methodology. The extension to general relativity has not been previously envisioned even to the present day. When the Priore project was suppressed by the changed French government in the mid-1970s, nonlinear optics itself was just being initiated. To the present day, however, there has previously been no inkling of the dramatic extension to NLO that arises by using longitudinal EM pump waves and thereby pumping in the time domain.

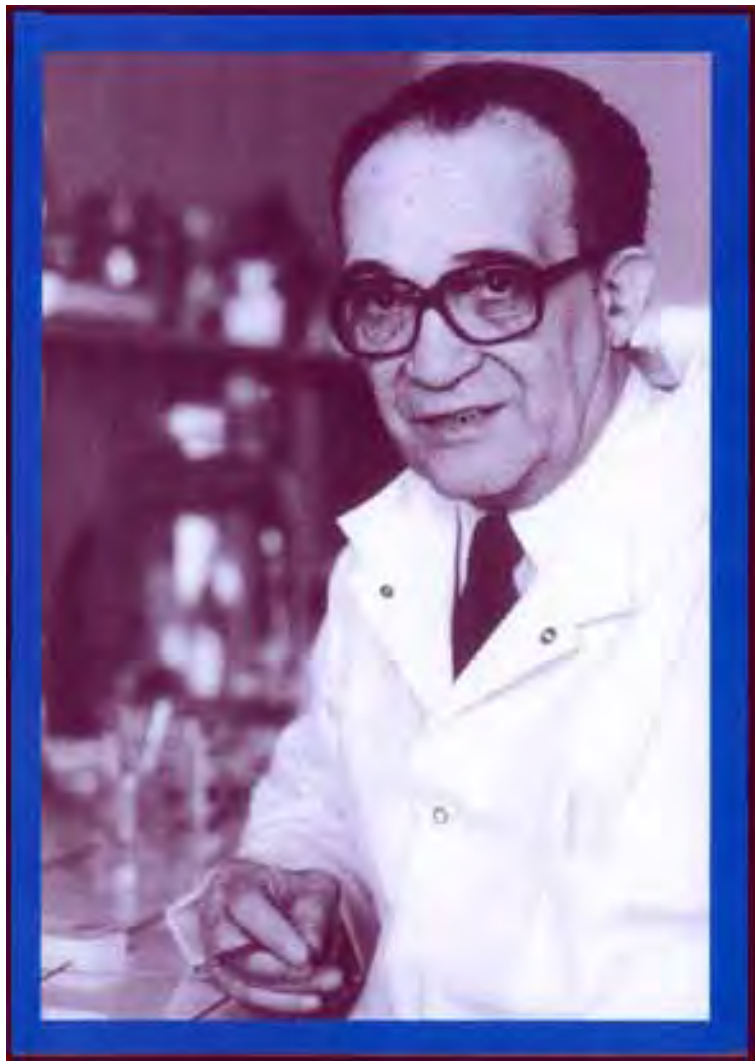
It is little wonder that Priore himself did not understand the nature of the technical mechanism he was utilizing, and neither did anyone else, and neither *has* anyone else prior to this time.

© 1998 T.E. Bearden

[Return to Slide Index](#)

[Next Slide](#)

[Previous Slide](#)



**Raymond Pautrizel,
eminent French
parasitologist who
worked with Priore**

Among other things, Pautrizel treated seriously infected immature rats with the Priore ray. These rats had never had a mature immune system. When they were removed from the machine, they still sickened again and died, because their immature immune systems could not resist the pathogen (*Trypanosoma*). So even though the damaged cells were reversed back to normal, the "normal" immune system was unable to fight off pathogens, which reinfected the cells and killed them, killing the rats.

This established the time-reversal nature of the therapy.



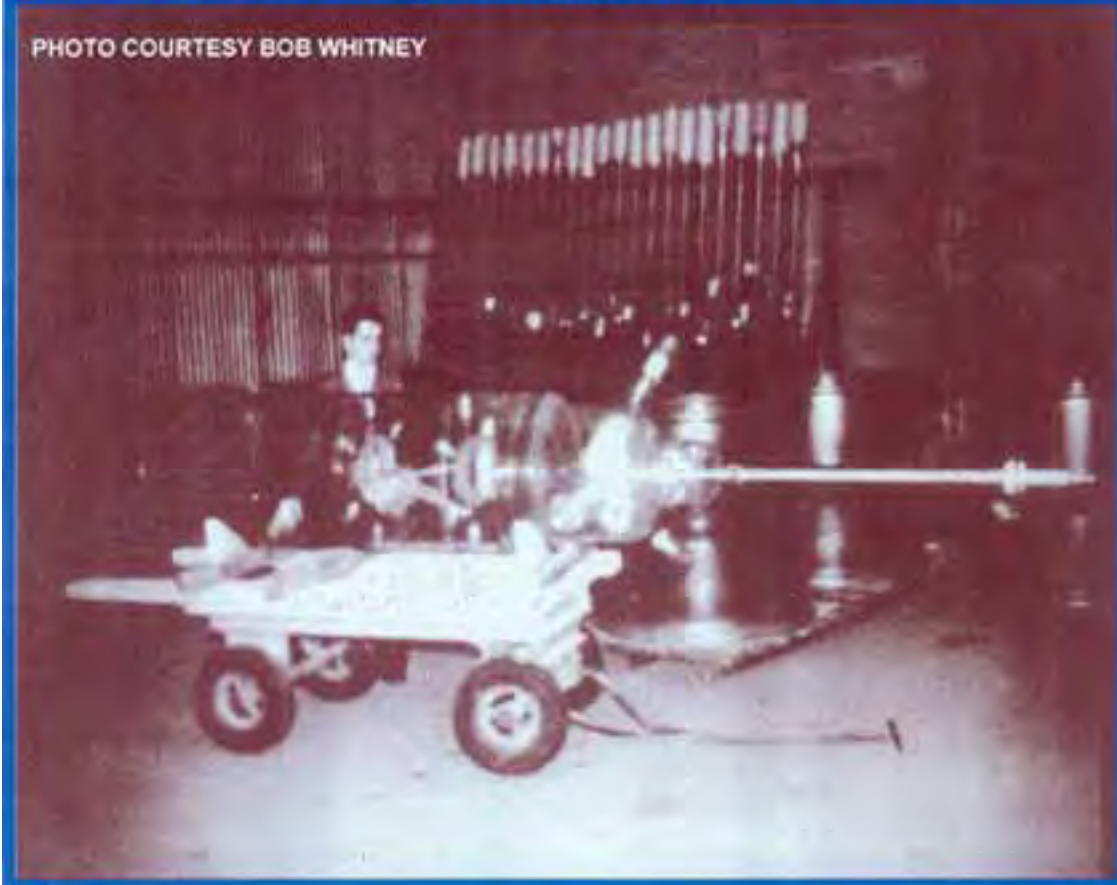
[Return
to Slide
Index](#)

[Next
Slide](#)

[Previous
Slide](#)

12-Foot plasma tube in Priore's large device

PHOTO COURTESY BOB WHITNEY

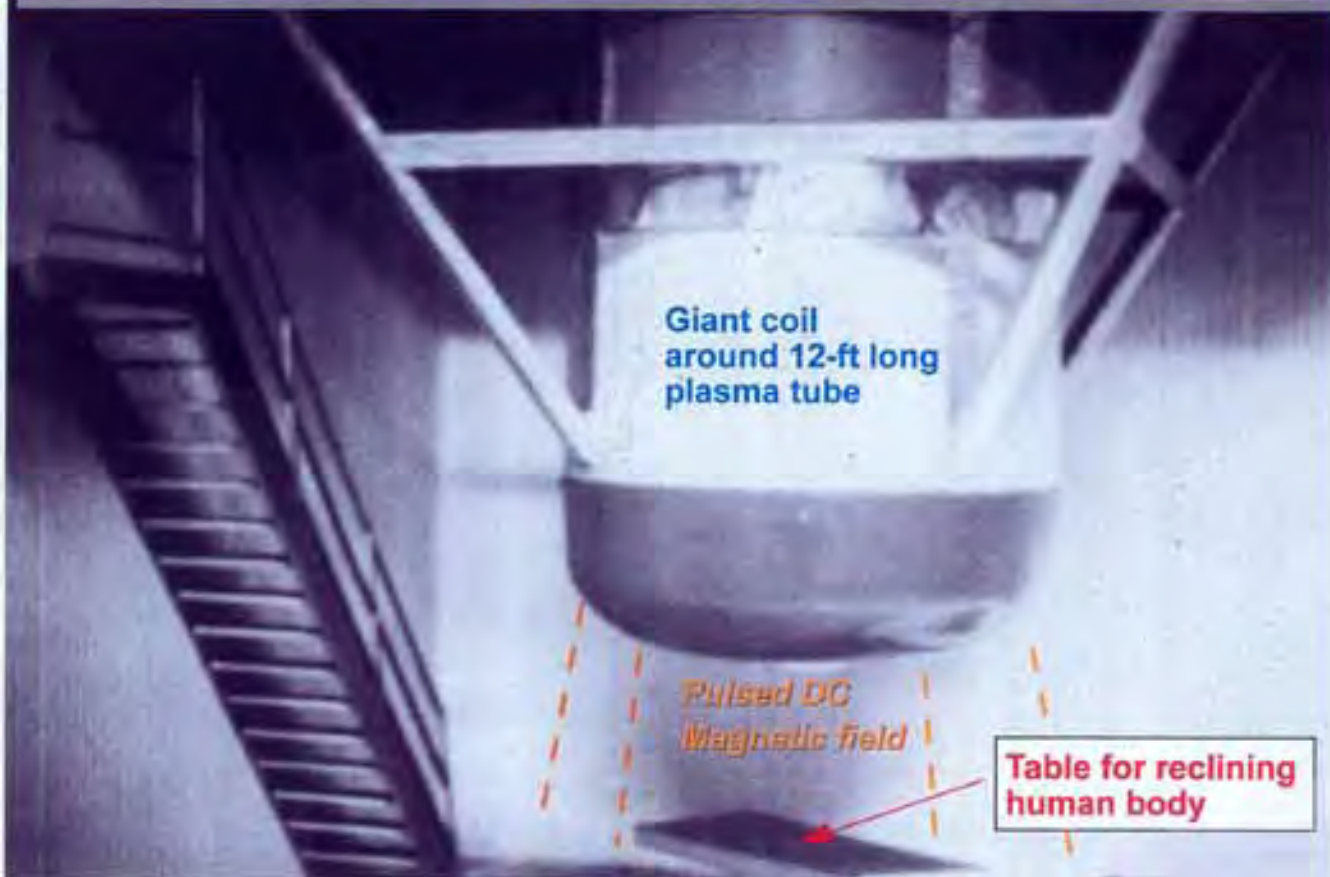


[Return to Slide Index](#)

[Next Slide](#)

[Previous Slide](#)

Priore's 3-1/2 stories high device for whole body treatment of humans



[Return
to Slide
Index](#)

[Next
Slide](#)

[Previous
Slide](#)

MECHANISM OF THE PRIORE THERAPY

★ **FACT: DISEASE-SPECIFIC VACUUM ENGINE PRESENT FOR ANY CELLULAR DISEASE, BY WHEELER'S PRINCIPLE**



- **DISEASE CAN BE REVERSED BY CREATING AMPLIFIED VACUUM ANTI-ENGINE (BEARDEN'S PRINCIPLE)**
- **ANTI-ENGINE IS CREATED BY PUMPING THE NONLINEAR CELLS IN THE "INNER EM" DOMAIN, TIME-REVERSING THEM**



★ **PRIORE UTILIZED A PLASMA TO PHASE CONJUGATE AND "INFOLD" MULTIPLE BIDIRECTIONAL LONGITUDINAL EM PUMP WAVES**



- **17 FREQUENCIES MIXED IN A ROTATING PLASMA**
- **PHASE CONJUGATES ADDED BY THE PLASMA**
- **INFOLDED MIX INTO STRONG PULSED DC MAGNETIC FIELD, WHICH CARRIED IT INTO ATOMIC NUCLEI**
- **PUMPED ALL NONLINEAR CELLULAR COMPONENTS TO PRODUCE AMPLIFIED, SPECIFIC VACUUM ANTI-ENGINE**



★ **NEGATED THE LONG-TERM CUMULATIVE CELLULAR DEDIFFERENTIATION ORDER GENERATED BY LONG-TERM HYPOXIA. TUMOR CELLS REVERTED TO NORMAL CELLS.**

★ **SCRUBBED OUT THE CUMULATED PRECANCEROUS STATE**

★ **RESTORED THE IMMUNE SYSTEM TO HIGH FUNCTIONING**

★ **NO EXCESSIVE TRAUMA TO TREATED ANIMAL**



CANCR-88

© 1994, 1996, 1998 T.E. BEARDEN

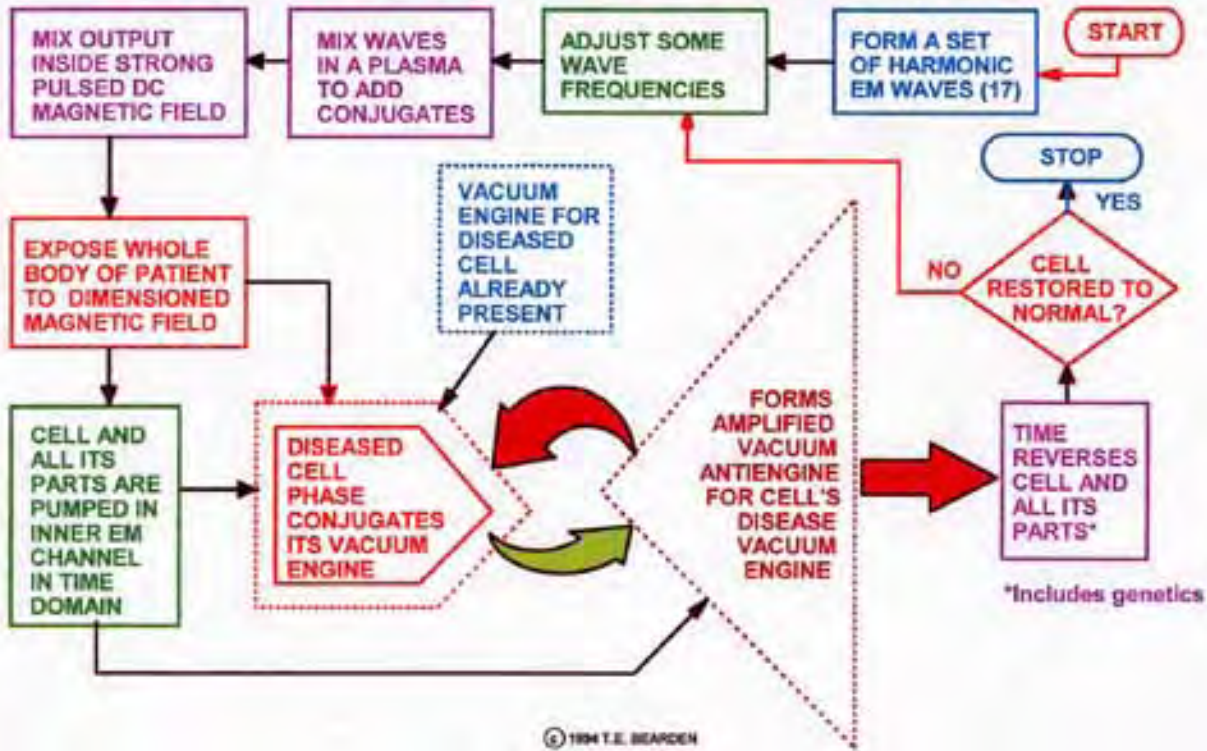
[Return to Slide Index](#)

[Next Slide](#)

[Previous Slide](#)

Priore's therapeutic methodology: Using infolded longitudinal EM waves as NLO pump waves, to pump in the time domain

Time-reverses the cells back to normal state



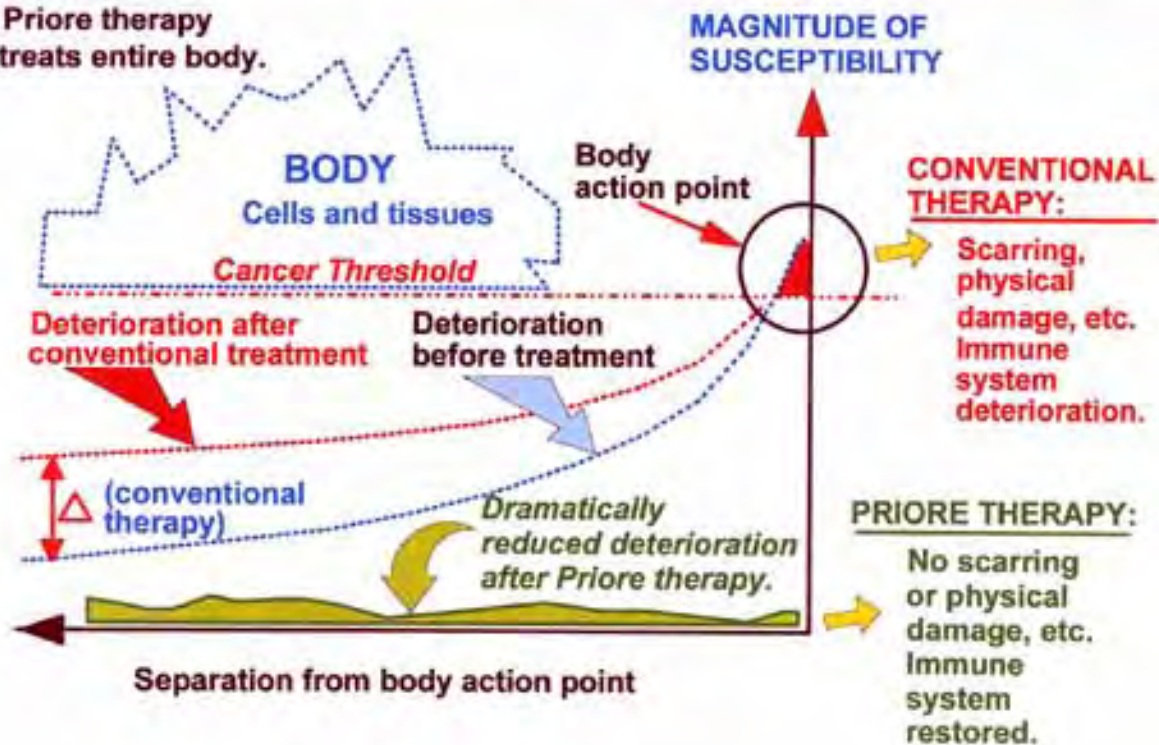
[Return to Slide Index](#)

[Next Slide](#)

[Previous Slide](#)

DRASTICALLY REDUCED CUMULATIVE DETERIORATION AFTER PRIORE THERAPY

NOTE: Priore therapy treats entire body.



[Return to Slide Index](#)

[Next Slide](#)

[Previous Slide](#)

JCS-50

© 1993, 1995 T.E. BEARDEN



Terrorist WMD Strikes on U.S. Cities:



Solution to Mass Casualties Treatment Problem

- *Threat and Current Status*
- *Historical Solution: Priore Treatment Therapy*
- ***Extended Physics and Background***
- *Modern WMD Solution: Portable Treatment Systems*
- *Conclusions: Technology Practical, Proven*
- *Recommendation: Crash Development Program*

CTEC, Inc.

28 Mar. 1998

© 1999 T.E. BEARDEN

[Return
to Slide
Index](#)

[Next
Slide](#)

[Previous
Slide](#)

Founders of Scalar Electromagnetics

- **G.J. Stoney:**

Decomposed the scalar potential into bidirectional wave pairs.

"On a supposed proof of a theorem in wave-motion," Phil. Mag., 5(43), 1897, p. 368-373 (and several other papers).

- **E.T. Whittaker:**

Decomposed the scalar potential into a series of bidirectional EM wave pairs in harmonic series, where the two waves in each pair are conjugates (i.e., a wave/antiwave pair) and are longitudinal waves.

"On the partial differential equations of mathematical physica," Math. Ann., Vol. 67, 1903, p. 333-355.

Showed that all classical EM -- including waves -- can be replaced by two interfering scalar potential functions.. (This founded superpotential theory, extended by Nisbet, Bromwich, Debye, McCrea, and others.)

"On an expression of the electromagnetic field due to electrons by means of two scalar potential functions," Proc. Lond. Math. Soc., Series 2, Vol. 1, 1904, p. 367-372.

- **R.W. Ziolkowski:**

Independently rediscovered the biwave decomposition of the scalar potential and added the product set (in theory enabling modulations and communications) to Stoney and Whittaker's sum set.

Various papers, 1995 to date.

© T.E. BEARDEN 1993, 1995

[Return to Slide Index](#)

[Next Slide](#)

[Previous Slide](#)



Subdivisions of Soviet Energetics



NONLIVING SYSTEMS

Energetics

- Nonliving systems
- Scalar Interferometry
- Action-at-a-Distance
- Quantum Potential
- Vacuum Engines
- Spacetime Structuring
- Material, Field Effects
- Nuclei, Lattice Changes
- Hidden EM Variables
- SWZ Effects



LIVING SYSTEMS

Bioenergetics

- Living Systems (Bodies)
- Cells, cellular changes
- Master Cell Control (Popp)
- Spacetime Structuring
- Disease Induction, Remission
- Action-at-a-Distance
- Quantum Potentials
- Scalar Interferometry
- Hidden EM Variables
- SWZ Effects

Psychoenergetics

- Living Systems (Minds)
- Thoughts, Memories, Emotions
- Conscious/Unconscious Minds
- Spacetime Structuring
- Species, Biospheric Minds
- Action-at-a-Distance
- Quantum Potentials
- Scalar Interferometry
- Hidden EM Variables
- SWZ Effects



Selected clipart © by IMSI MasterClips™

[Return to Slide Index](#)

[Next Slide](#)

[Previous Slide](#)

Bunge on the Status of Classical and Quantum Physics

"... it is not usually acknowledged that electrodynamics, both classical and quantal, are in a sad state... the best modern physicist is the one who acknowledges that neither classical nor quantum physics are cut and dried, both being full of holes and in need of a vigorous overhauling not only to better cover their own domains but also to join smoothly so as to produce a coherent picture of the various levels of physical reality."

[Return to Slide Index](#)

[Next Slide](#)

[Previous Slide](#)

*Mario Bunge, Foundations of Physics, Springer-Verlag, New York, NY, 1967, p. 176..

© 1996 T.E. BEARDEN

EINSTEIN ON REVIEWING FOUNDATIONS

"...the scientist makes use of a whole arsenal of concepts which he imbibed practically with his mother's milk; and seldom if ever is he aware of the eternally problematic character of his concepts. He uses this conceptual material, or, speaking more exactly, these conceptual tools of thought, as something obviously, immutably given; something having an objective value of truth which is hardly even, and in any case not seriously, to be doubted. ...in the interests of science it is necessary over and over again to engage in the critique of these fundamental concepts, in order that we may not unconsciously be ruled by them."



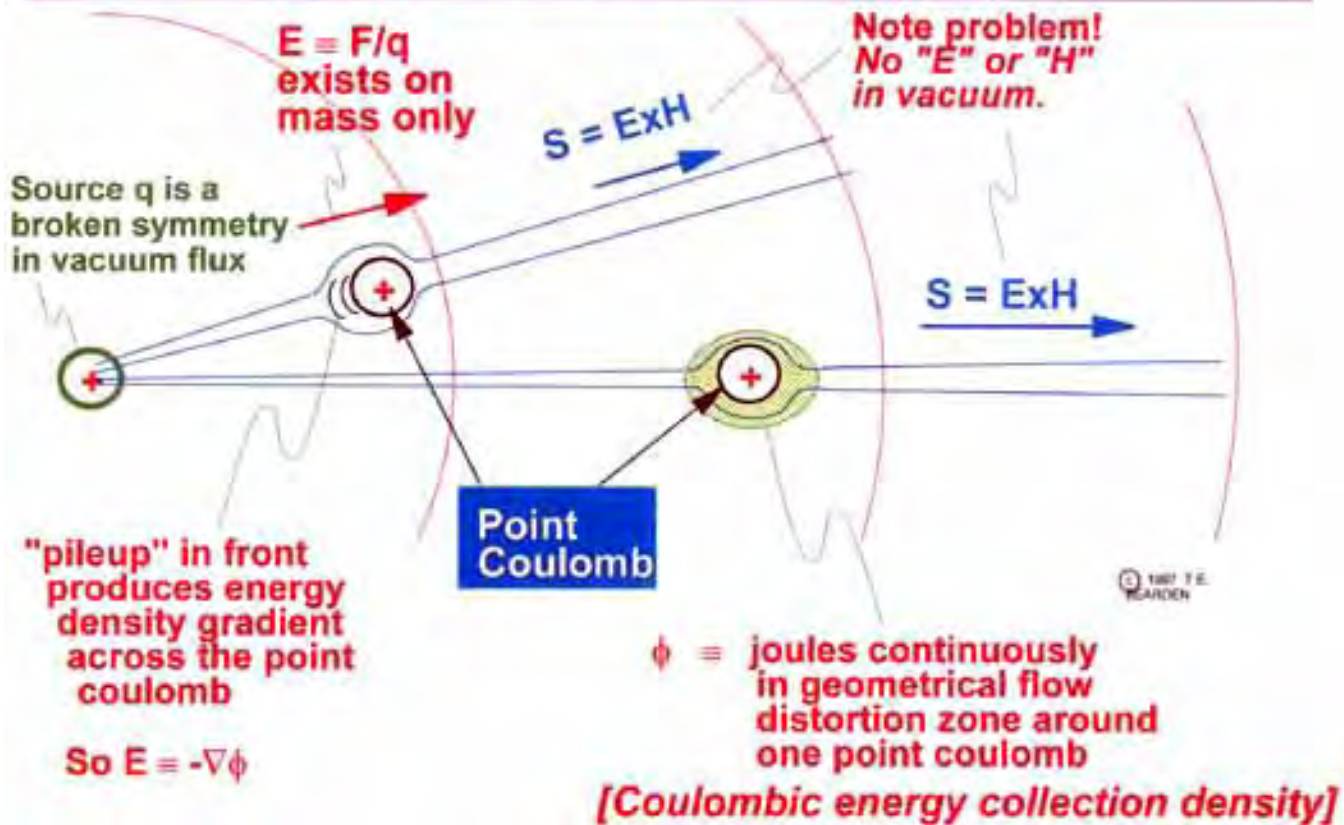
Albert Einstein, "Foreword," in Max Jammer, Concepts of Space: The History of the Theories of Space in Physics, Harvard University Press, Cambridge, Massachusetts, 1969, p. xi-xii.

[Return to Slide Index](#)

[Next Slide](#)

[Previous Slide](#)

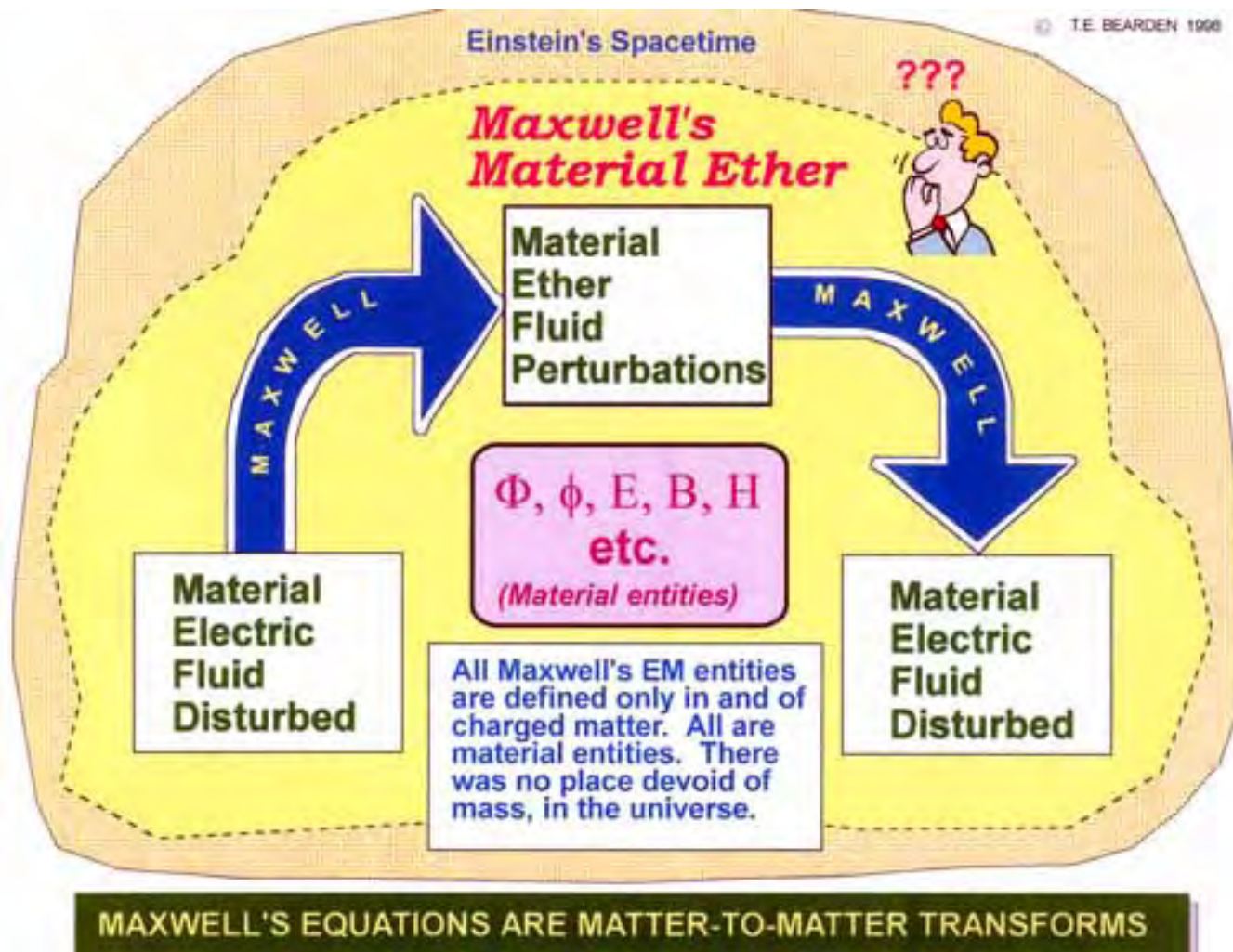
Fields and Potentials have been "defined" only in and on matter



[Return to Slide Index](#)

[Next Slide](#)

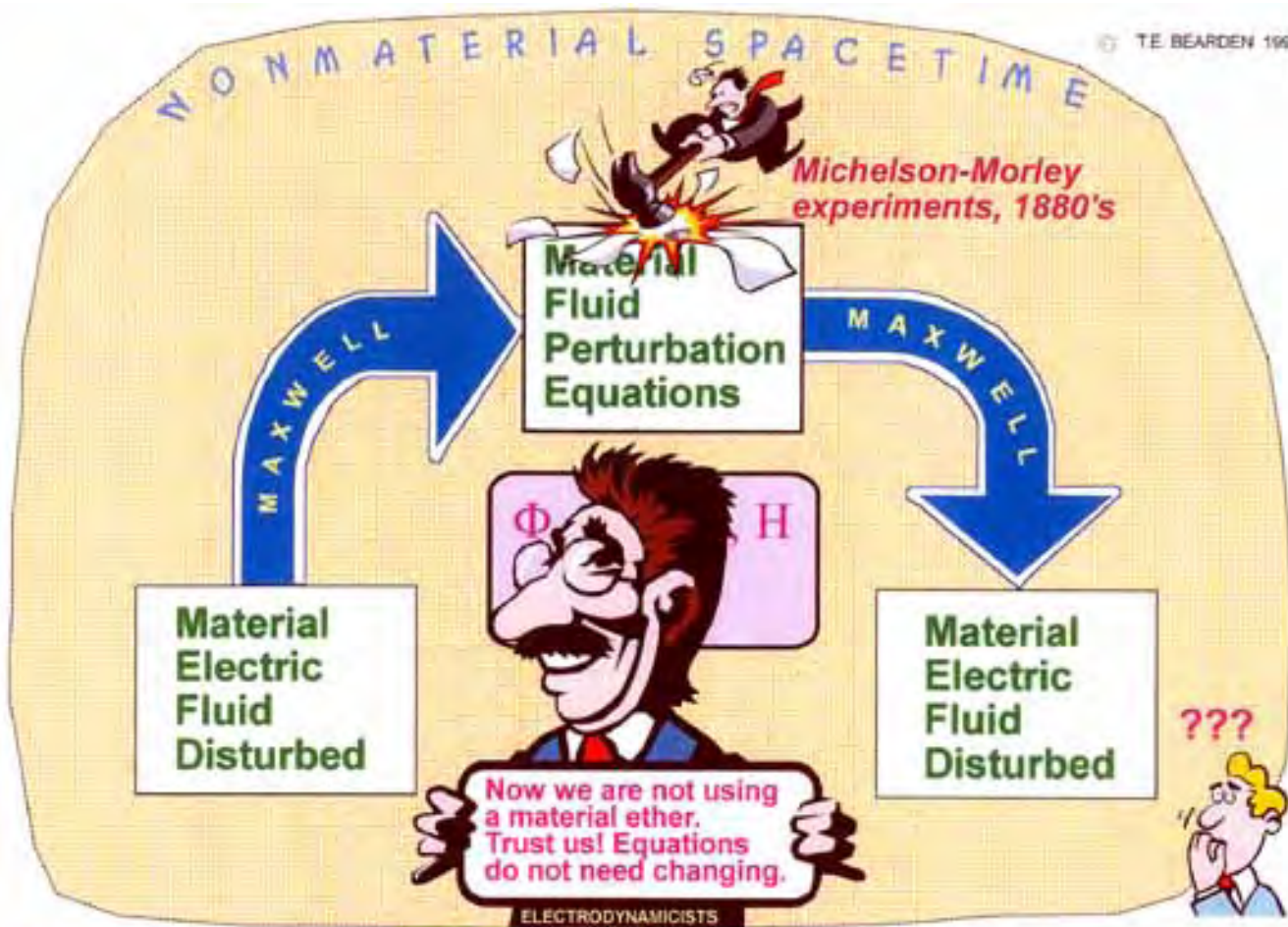
[Previous Slide](#)



[Return to Slide Index](#)

[Next Slide](#)

[Previous Slide](#)



[Return to Slide Index](#)

[Next Slide](#)

[Previous Slide](#)

Electrodynamicists' Reaction to Removal of the Material Ether



THE MISSING INFOLDED ELECTRODYNAMICS



Maxwellian electrodynamics has nothing at all to say about EM entities in space or their form

Material
Electric
Fluid
Disturbed



Material
Electric
Fluid
Disturbed

MATTER-TO-SPACETIME
TRANSFORMATION

INFOLDED INSIDE
MAXWELLIAN EM
AS HIDDEN EM
VARIABLES

SPACETIME-TO-MATTER
TRANSFORMATION

INTERESTED SPACETIME CURVATURES
(VACUUM ENGINES)
INFOLDED GENERAL RELATIVITY

EINSTEIN'S
SPACETIME

© T.E. BEARDEN 1998

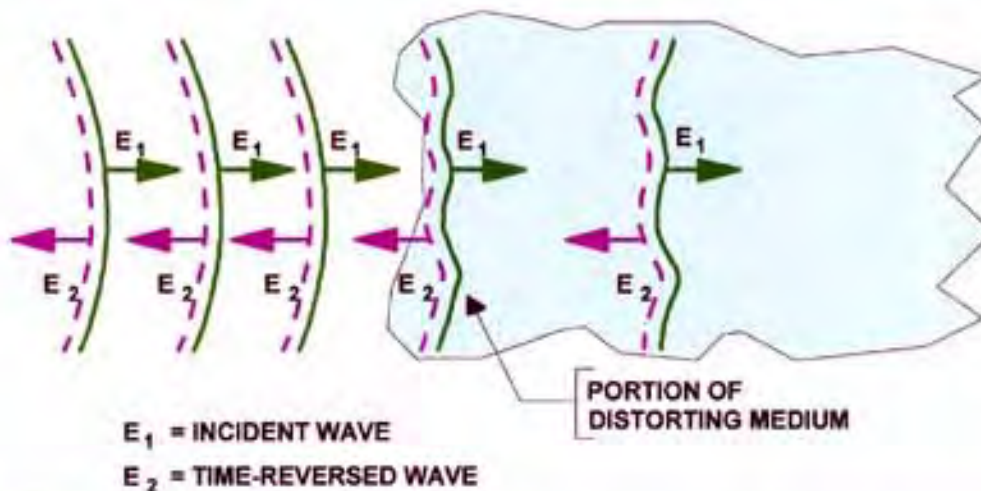
[Return to Slide Index](#)

[Next Slide](#)

[Previous Slide](#)

Nonlinear Optics

Distortion Correction Theorem



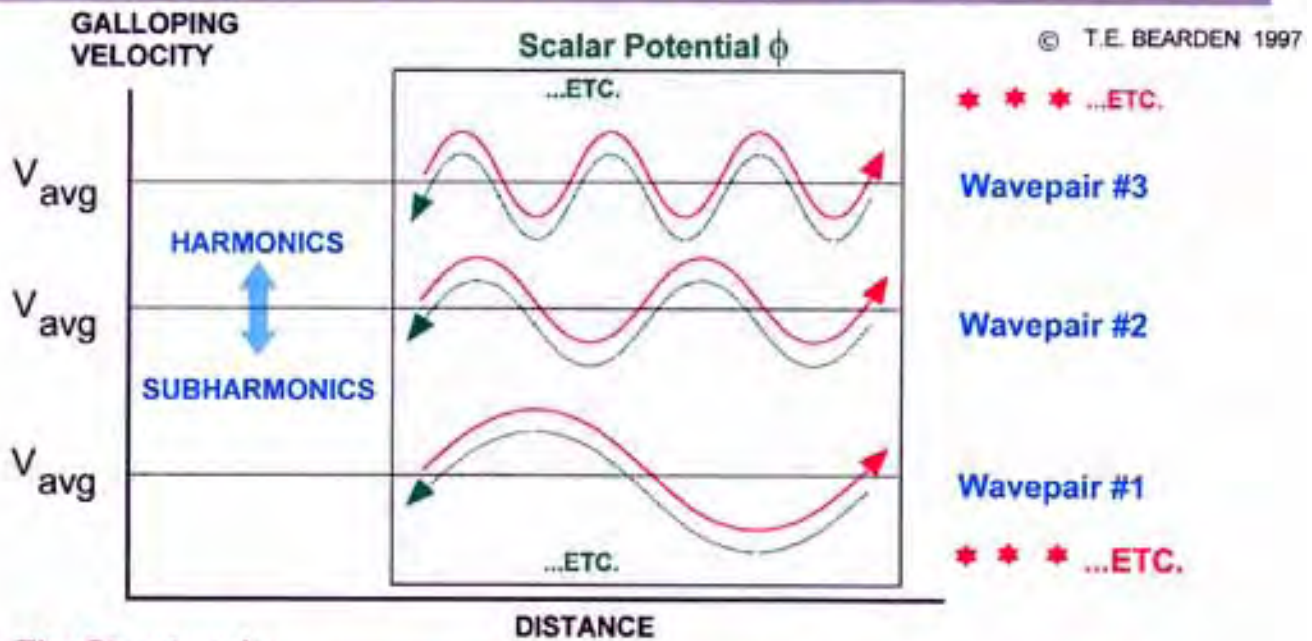
"If a scalar wave $E_1(\mathbf{r})$ propagates from left to right through an arbitrary but lossless dielectric medium, and if we generate in some region of space [say near $z = 0$] its phase conjugate replica $E_2(\mathbf{r})$, then E_2 will propagate backward from right to left through the dielectric medium, remaining everywhere the phase conjugate of E_1 ."

[Return to Slide Index](#)

[Next Slide](#)

[Previous Slide](#)

Infolded longitudinal EM biwave composition of a scalar potential



The Structure Is:

A harmonic set of longitudinal EM wavepairs. In each wavepair the two waves superpose spatially, but travel in opposite directions. The two are phase conjugates and time-reversed replicas of each other. Thus they comprise a coupled longitudinal wave and antiwave. The photons must be coupled into photon/antiphoton pairs (gravitons) by a strong application of the distortion correction theorem of nonlinear optics. Each wave in the biwave pair is a galloping wave. Each wavepair is a standing electrogravitational wave. In nonlinear optics, such a wavepair is a pump wave which pumps in the time domain.

Note: Think of the oscillations as velocity modulations.

[Return to Slide Index](#)

[Next Slide](#)

[Previous Slide](#)

The Zero-Vector Axiom Destroys "Topologies within Topologies"

- The axiom: There is a unique vector, $\bar{0}$, in V (the vector space) such that

$$\bar{V} + \bar{0} = \bar{0} + \bar{V}$$
- Note that $\bar{V} + \bar{0}_i = \bar{0}_j + \bar{V}$; $\bar{0}_i = -\bar{0}_i = n\bar{0}_i$
 so $\bar{0}_i = \bar{0}_j = \bar{0}_k = \dots + \bar{0}_n = \dots$
- This makes all $\bar{0}_i$ equal by assumption, since there is *assumed* to be only a single type $\bar{0}$ without real components
- In fact, $\bar{0}$ is not unique. An infinite number of different zero-vector systems, with real components, satisfy the zero-vector axiom.

[Return
to Slide
Index](#)

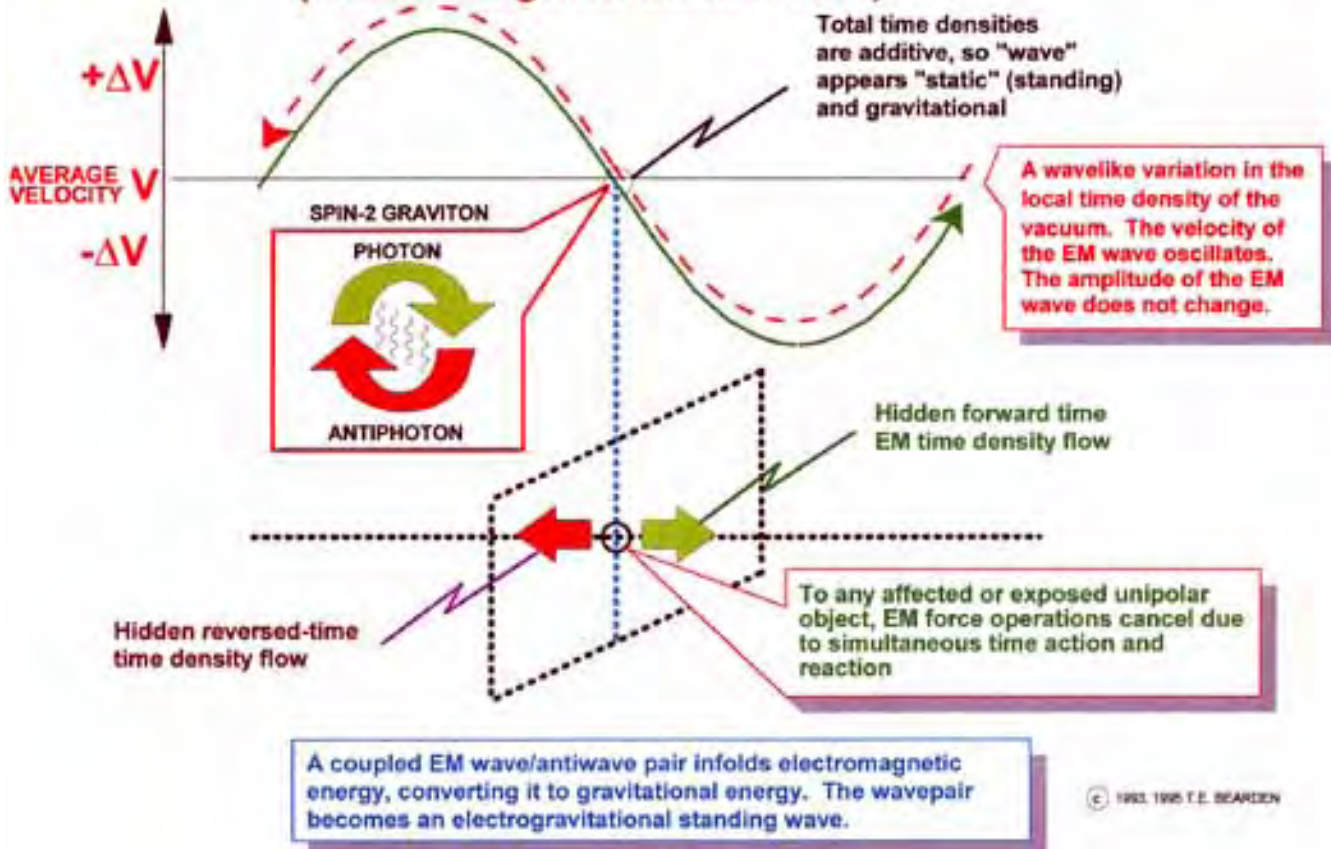
[Next
Slide](#)

[Previous
Slide](#)

STONEY-WHITTAKER BIDIRECTIONAL LONGITUDINAL EM WAVE PAIR



(An electrogravitational wave)



[Return to Slide Index](#)

[Next Slide](#)

[Previous Slide](#)

Undistorted Progressive Waves (UPWs)*

(waves with velocity v , where $0 \leq v \leq \infty$)

- Major equations of interest having UPW solutions are:
 - *Homogeneous wave equation*
 - *Maxwell equations*
 - *Dirac, Weyl, and Klein-Gordon equations*
- UPWs are translationally invariant, and do not spread, or they reconstruct their original form after a certain period.
- UPW solutions have infinite energy. Quasi-UPWs can have finite energy and can in principle be launched into space.
- Subluminal Maxwell solutions are called EM particles. Superluminal Maxwell solutions are called X-waves.
- *Experimental results indicate such waves will be produced within the next few years.*
- *Nimtz has translated Mozart's 40th symphony at $v = 4.7c$.*

*Rodrigues and Lu, *Found. Phys.* 27(3), 1997, p. 435-508.

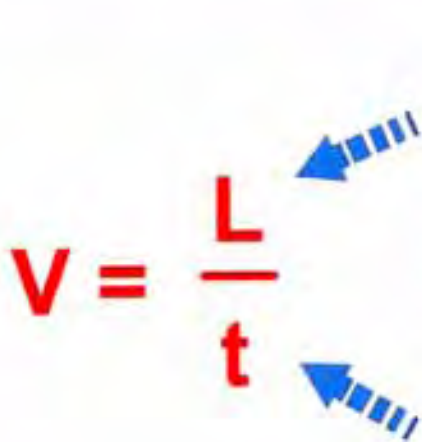
[Return to Slide Index](#)

[Next Slide](#)

[Previous Slide](#)

© 1996 T.E. BEARDEN

Velocity modulating a longitudinal EM wave oscillates rate of flow of time

$$V = \frac{L}{t}$$


Observer sees it this way

Constant transverse wave magnitude

Wave oscillates its velocity along its path, about a nominal value

Wave oscillates this way

Constant transverse magnitude

Wave oscillates magnitude of its transported t, about a nominal value

Note:

- Waves consist of photons
- Each photon consists of energy x time
- Each photon carries time as well as energy
- A wave is both a spatial energy dynamics and a temporal dynamics
- Wave complexes carry dynamic time structures as well as dynamic energy structures

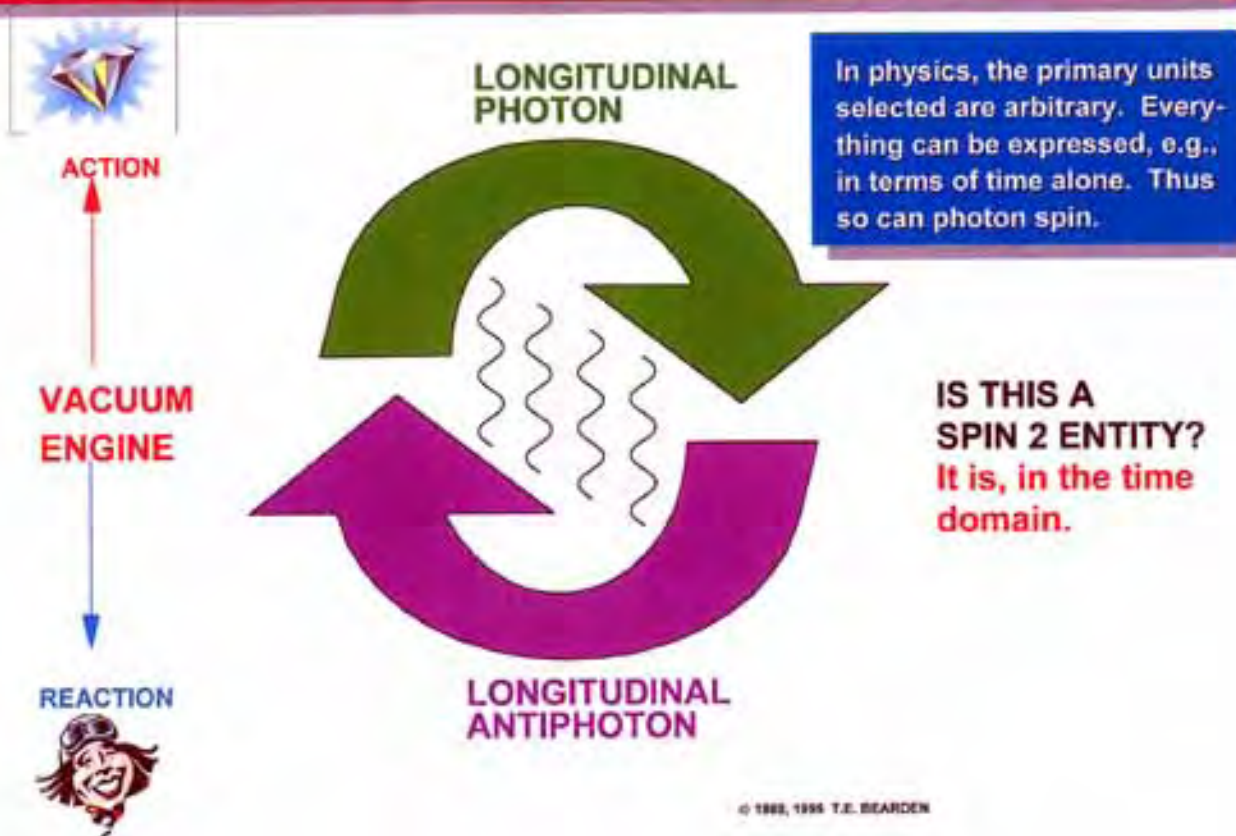
© 1997 T.E. BEARDEN

[Return to Slide Index](#)

[Next Slide](#)

[Previous Slide](#)

The Graviton Is a Coupled Photon/Antiphoton Pair (Both photon and antiphoton are longitudinal)

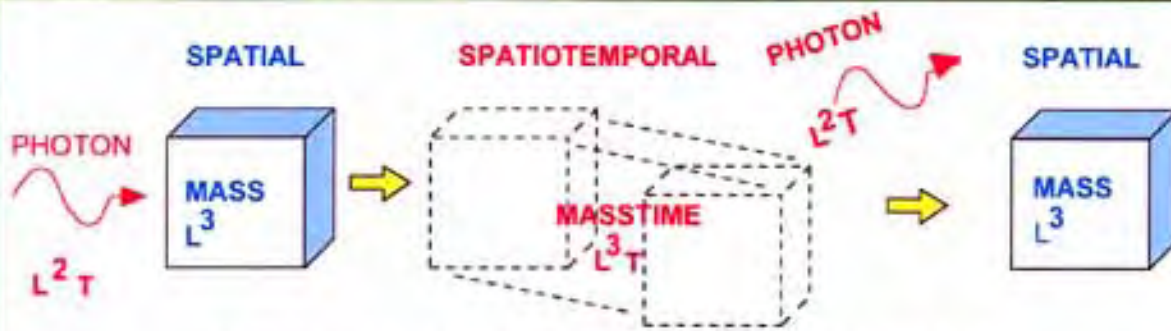


[Return to Slide Index](#)

[Next Slide](#)

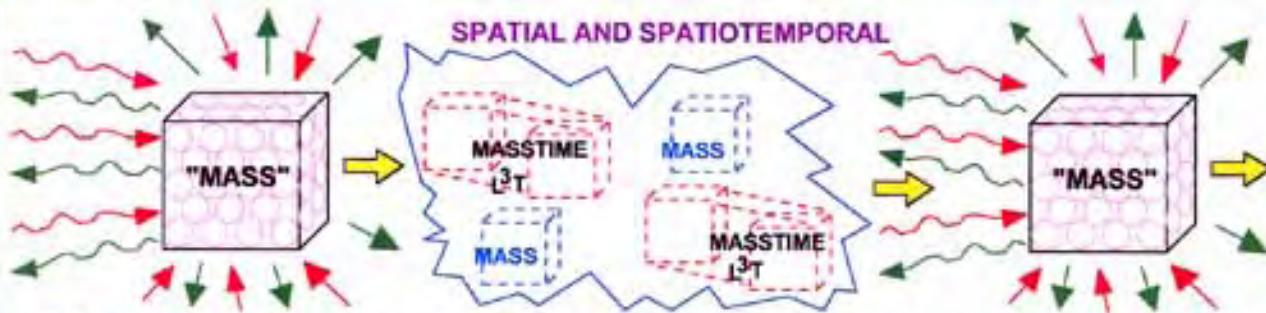
[Previous Slide](#)

Mechanisms for Physical Change and the Flow of Time



$$(\Delta E)(\Delta t) + M \Rightarrow (M + \Delta M)\Delta t \Rightarrow M + (\Delta E)(\Delta t)$$

Flow of macroscopic time (observable photon interactions)



Flow of microscopic time (via virtual photon interactions)

The photon interaction generates an observed quantum change and a discretized jump in the rate of time flow. A particle observably changes by only a single Δt at a time. The background flow of time in which the jump in rate occurs, is created by the continual absorption and emission of virtual photons.

© 1994 T.E. BEARDEN

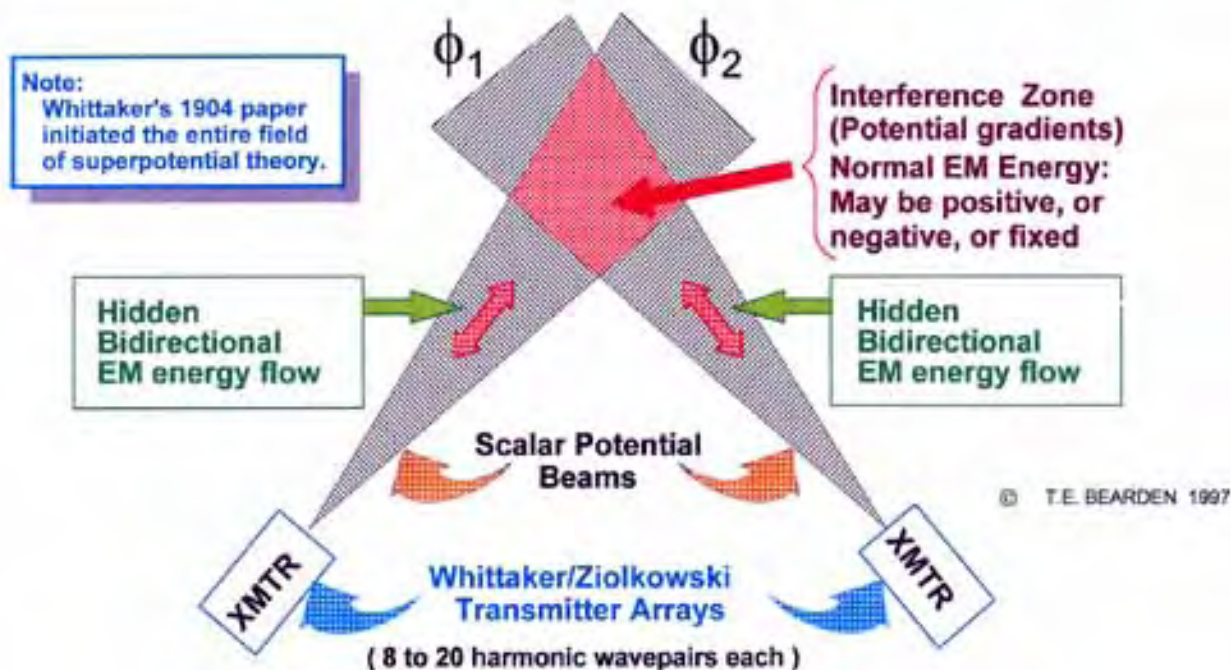
[Return to Slide Index](#)

[Next Slide](#)

[Previous Slide](#)

Any EM Field or Wave Pattern Is Produced by interference of Two Scalar Potential Functions (E.T. Whittaker, 1904)

(Use of Hidden Information Content of the Field)
(Can Provide Action-at-a-Distance)

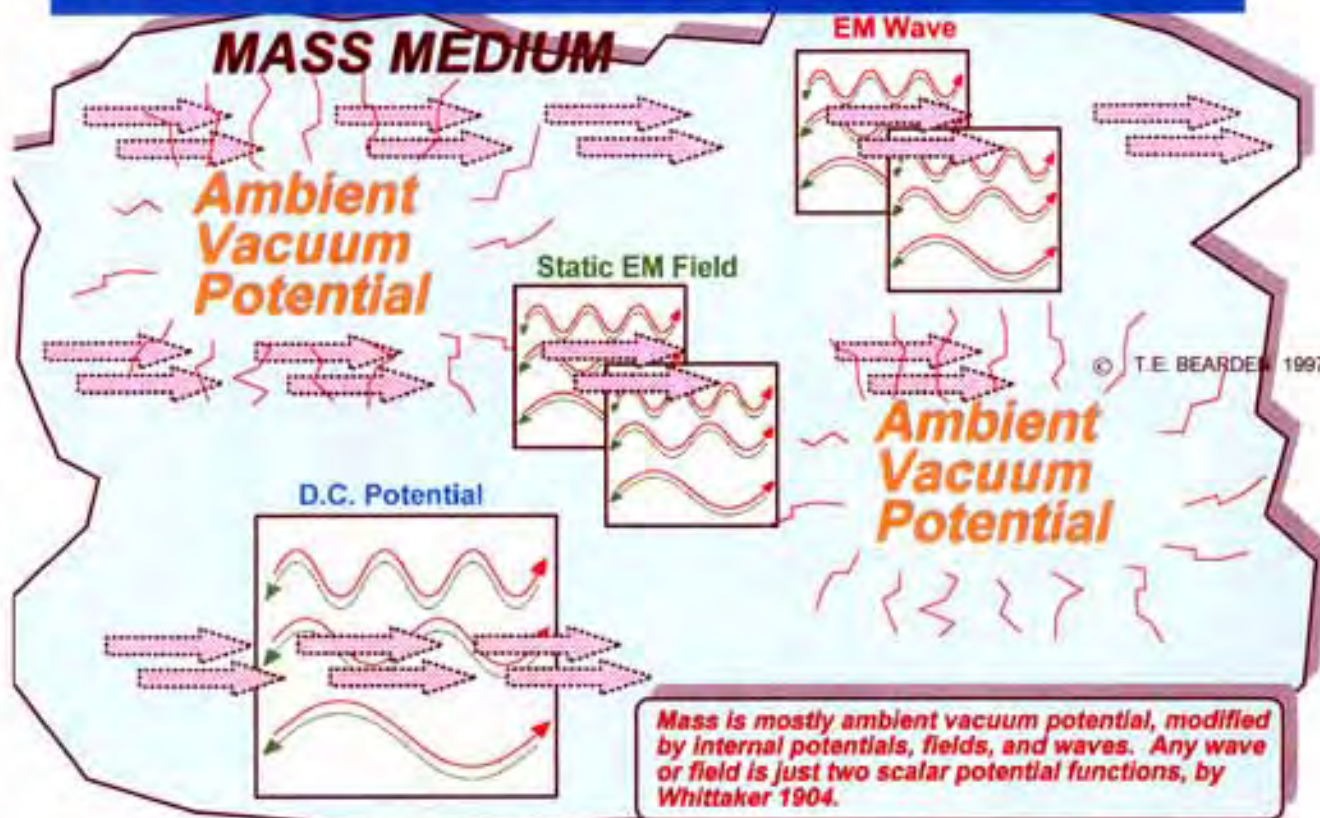


[Return to Slide Index](#)

[Next Slide](#)

[Previous Slide](#)

Mass is transparent to longitudinal EM waves, which move through the infolded interiors of internal waves, potentials, and fields in the mass

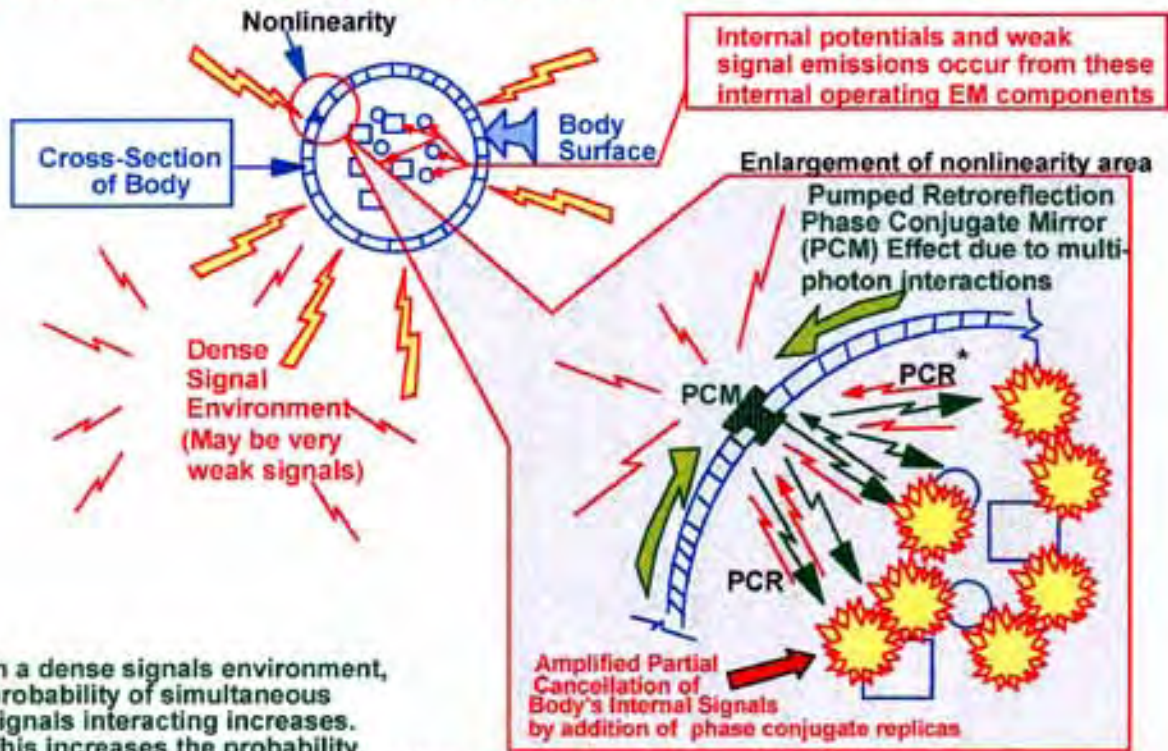


[Return to Slide Index](#)

[Next Slide](#)

[Previous Slide](#)

Deep penetration of weak signals in a dense signal environment, by nonlinear retroreflection



In a dense signals environment, probability of simultaneous signals interacting increases. This increases the probability of deep penetration by amplified phase conjugate reflections of weak internally generated signals from the interior, impinging upon the pumped (stressed) nonlinear surface areas where the simultaneous exterior interactions occur.

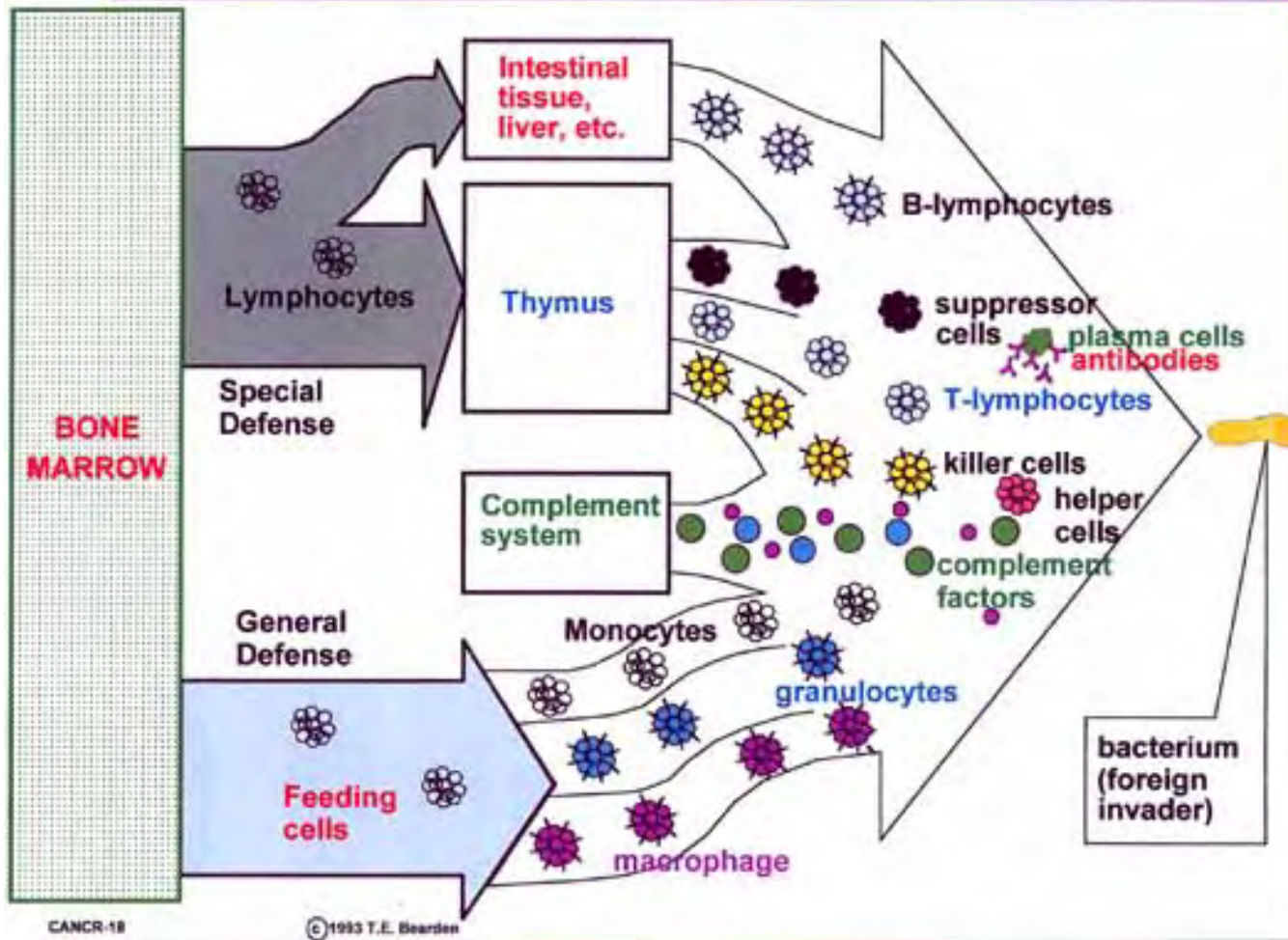
* Phase conjugate replica
© 1993, 1995 T.E. Seward

[Return to Slide Index](#)

[Next Slide](#)

[Previous Slide](#)

THE IMMUNE SYSTEM



[Return to Slide Index](#)

[Next Slide](#)

[Previous Slide](#)

Popp's master cellular control system

- Provides coherent, long-range interactions in biological systems
- Is an organized morphogenetic field at the basis of functional control



- Emission very sensitive to almost all external and internal influences
- Both spontaneous and delayed luminescence occur
- Photons stored in cell during the delay

- Leakage provides ultraweak, coherent biophoton emission from the system
- Fractional intensity pattern: few to some 100s of photons/cm²/sec
- Optimum signal-to-noise ratio



- A single delayed biophoton may be able to trigger 10¹⁰ reactions in a cell before its release
- Spectrum almost continuous within optical range from 200-800 nm.

- Biophoton emission shows biological system always out of equilibrium
- Emission has holistic characteristics
- Correlations to most, if not all, of the biological functions of the organism



- DNA, all other processes are sources
- Single main process of whole system, different processes strongly coupled
- Information function and sync of biological clocks (oscillators)



© 1997 T.E. BEARDEN

[Return to Slide Index](#)

[Next Slide](#)

[Previous Slide](#)



CANCER: CHARACTERISTICS

- **NOT ONE DISEASE BUT A WHOLE RANGE**
- **STARTS IN ORDINARY (AEROBIC) CELL**
- **CELL SHAKES OFF BODY'S DICTATORIAL CONTROL***
- **STARTS UNCONTROLLED DIVISION**
- **BECOMES A LUMP**
- **CAN SEND FORTH CANCER CELLS**
 - **THROUGH BLOOD**
 - **THROUGH LYMPH**
- **THESE FORM METASTASES (SECONDARY TUMORS)**
- **OFTEN BECOME ANAEROBIC (NON-OXYGEN USING)**
- **ENIGMA IS FAILURE OF IMMUNE SYSTEM TO ATTACK SOME TUMOR CELLS**
 - **SUPPRESSOR CELLS MAY CURB IMMUNE SYSTEM**
 - **TUMOR MAY LACK ANTIGENS NORMALLY IDENTIFIED BY THE IMMUNE SYSTEM**

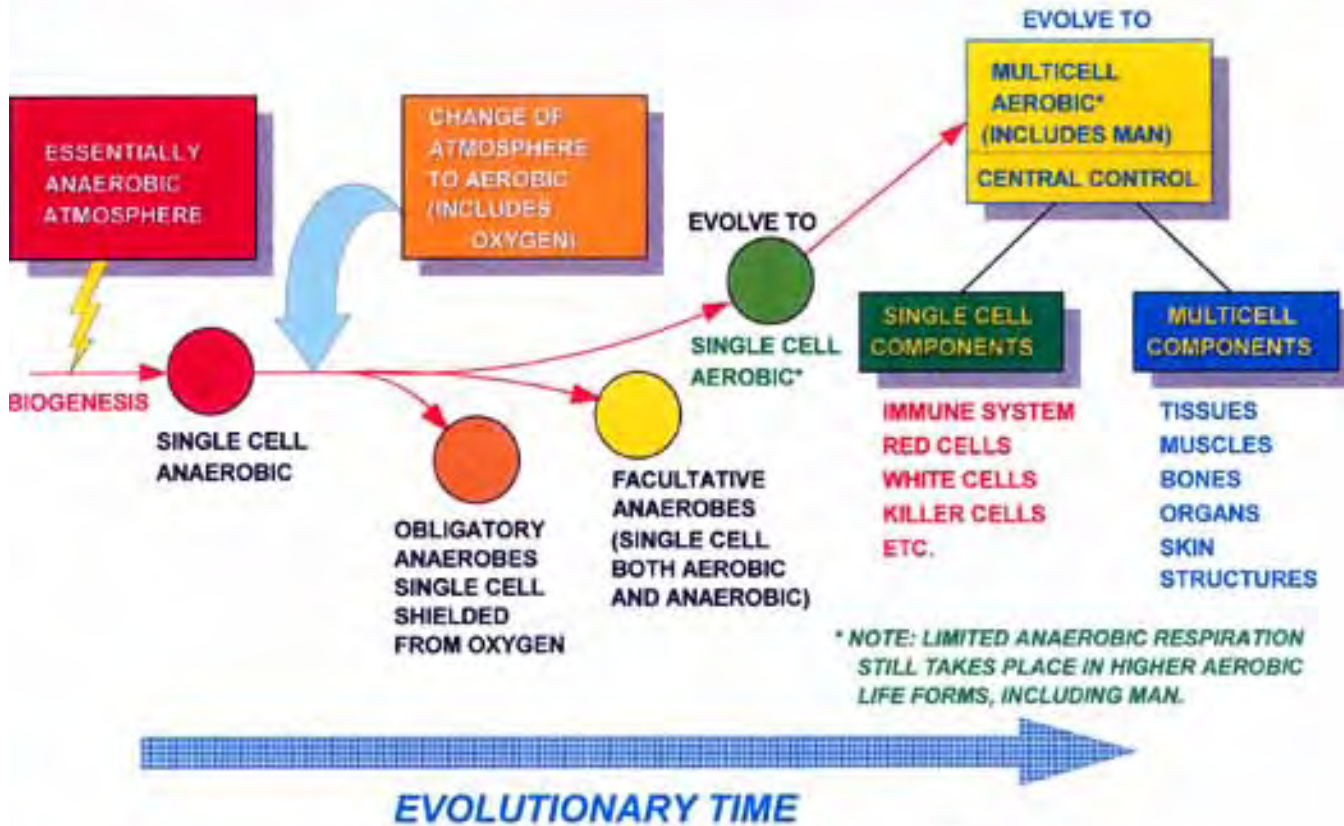
**R&R system forces cell back toward anaerobe*

[Return
to Slide
Index](#)

[Next
Slide](#)

[Previous
Slide](#)

THE EVOLUTIONARY PATH OF MULTICELLULAR ORGANISMS

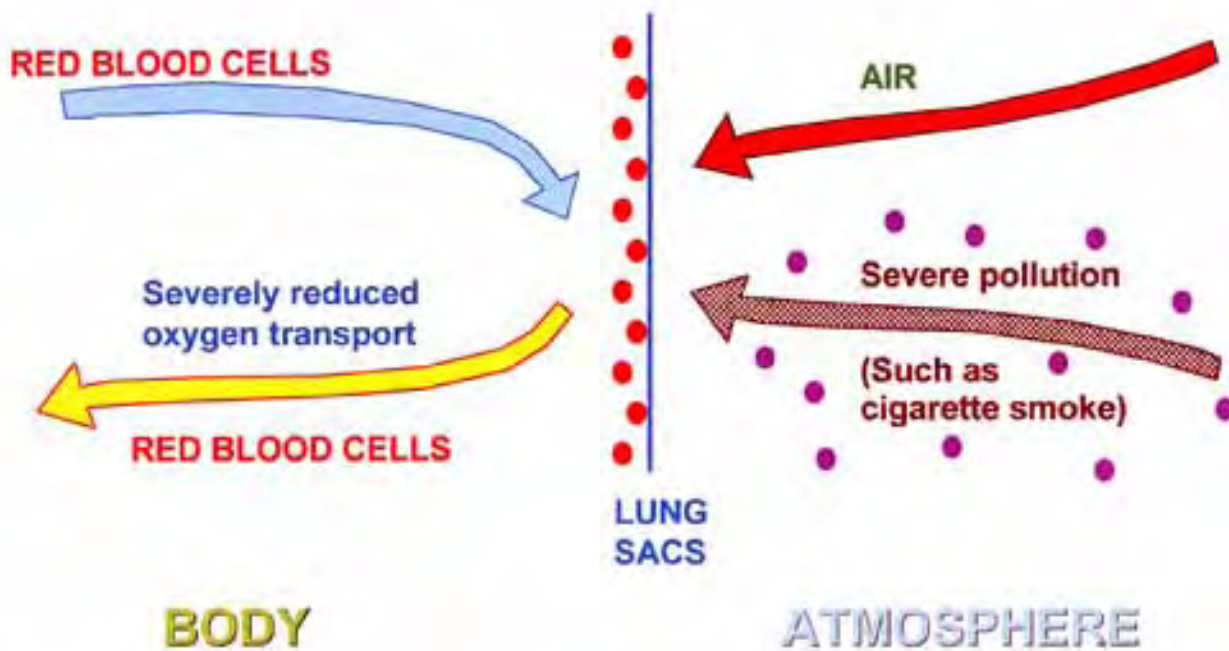


[Return to Slide Index](#)

[Next Slide](#)

[Previous Slide](#)

EFFECT OF FLUID CONTAMINATION ON HEMOGLOBIN'S OXYGEN TRANSPORT



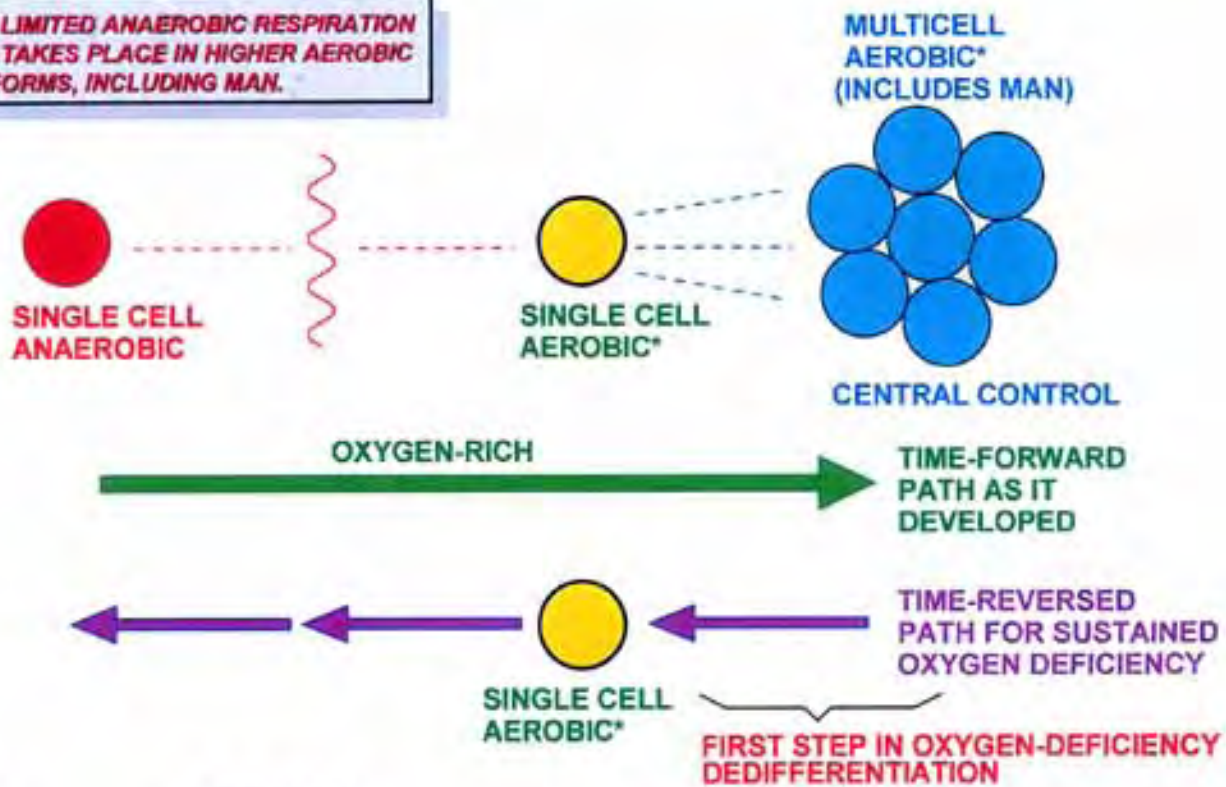
[Return to Slide Index](#)

[Next Slide](#)

[Previous Slide](#)

FIRST STEP IN SELF-PROMOTION OF CANCER DUE TO HYPOXIA

*** NOTE: LIMITED ANAEROBIC RESPIRATION STILL TAKES PLACE IN HIGHER AEROBIC LIFE FORMS, INCLUDING MAN.**



[Return to Slide Index](#)

[Next Slide](#)

[Previous Slide](#)

BECKER'S CELLULAR GROWTH CONTROL

- Two major links uncovered between :
 - The DC system and nervous system
 - The DC system and all body cells
- Bioelectric potentials of primary importance
- **Physiology presently considers controls limited to:**
 - **Neural action potential**
 - **Various hormone chemical agents**
 - **Chemical agents associated with DNA/RNA system**
- **Complete Operational Biological Control System:**
 - Controls growth, healing, biological cycles, etc.
 - Operates in ANALOG mode; various levels of DC
 - Interlocks physically with nervous system (and may be its precursor)
 - Other chemical agents
 - Tissue growth and healing **NOT INCLUDED**
- **Medical community now more concerned with diseases resulting from:**
 - **Inadequate/abnormal growth**
 - **Inadequate healing**

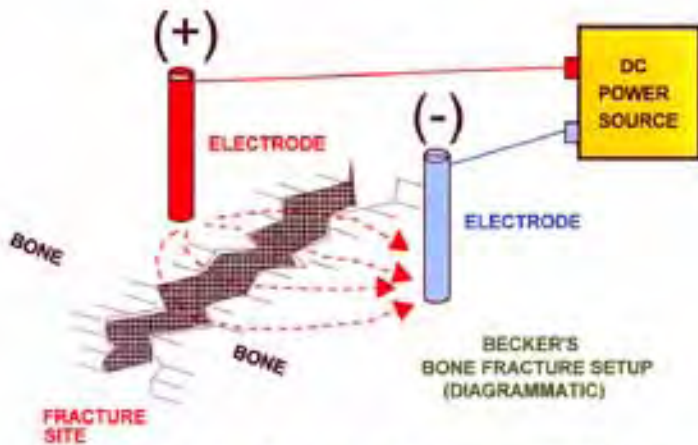
[Return
to Slide
Index](#)

[Next
Slide](#)

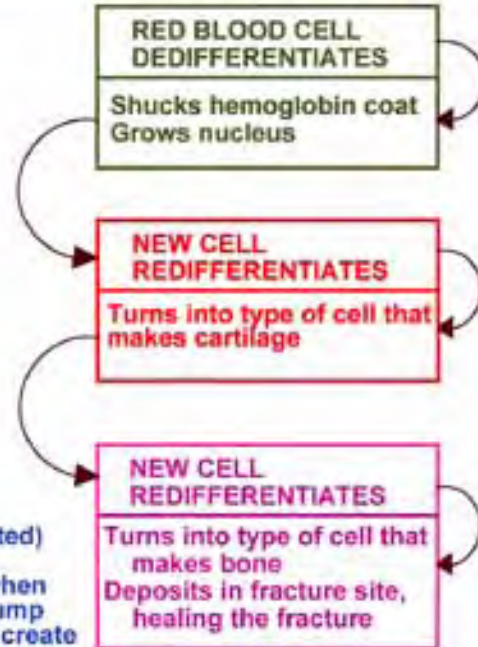
[Previous
Slide](#)

Becker's dc treatment of bone fractures

Application of tiny DC currents to heal difficult bone fractures. Only picoamperes are utilized. Pulsed DC current or pulsed magnetic fields may also be utilized.



Proves that cells can be time-reversed (phase conjugated) (dedifferentiated) or time-forwarded (redifferentiated) by application of very weak electromagnetic signals, when those signals contain longitudinal bidirectional EM "pump wave" wavepairs, which cause the cell and its parts to create precise vacuum antienzymes.



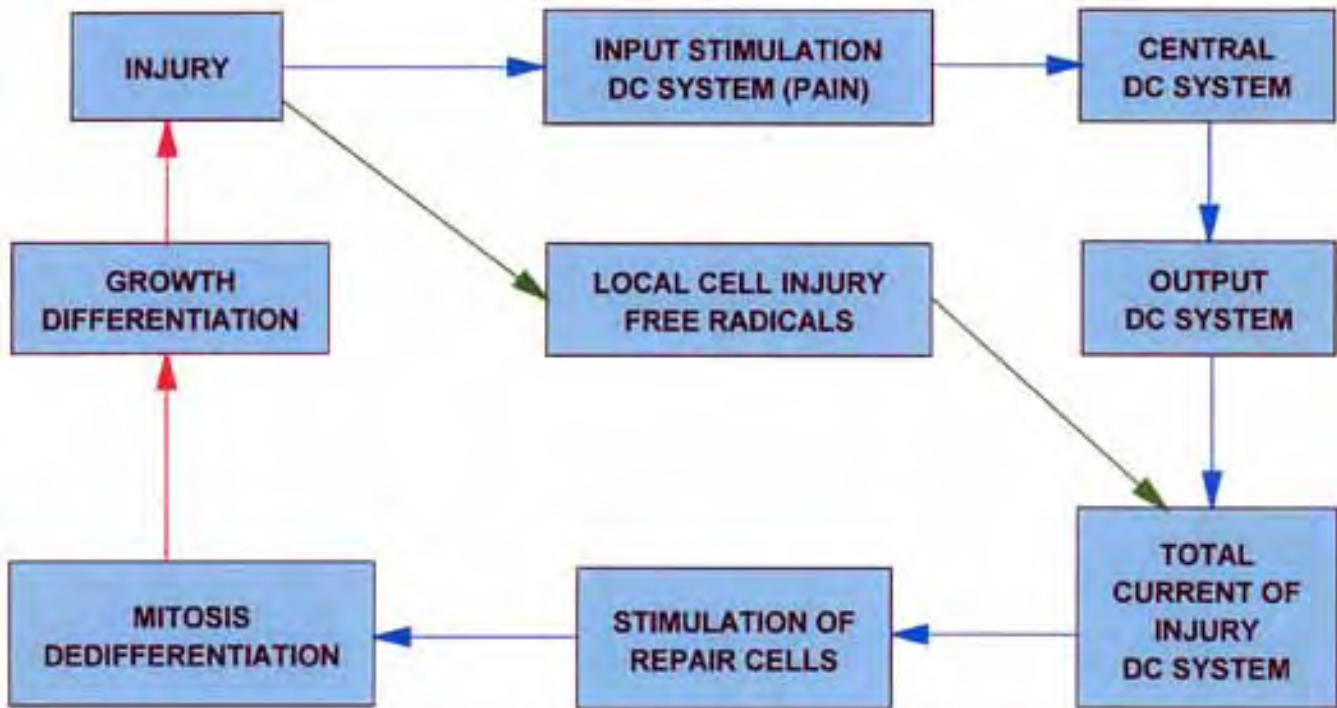
© 1993, 1998, T.E. BEARDEN

[Return to Slide Index](#)

[Next Slide](#)

[Previous Slide](#)

Becker's theoretical DC control system involved with response to injury*



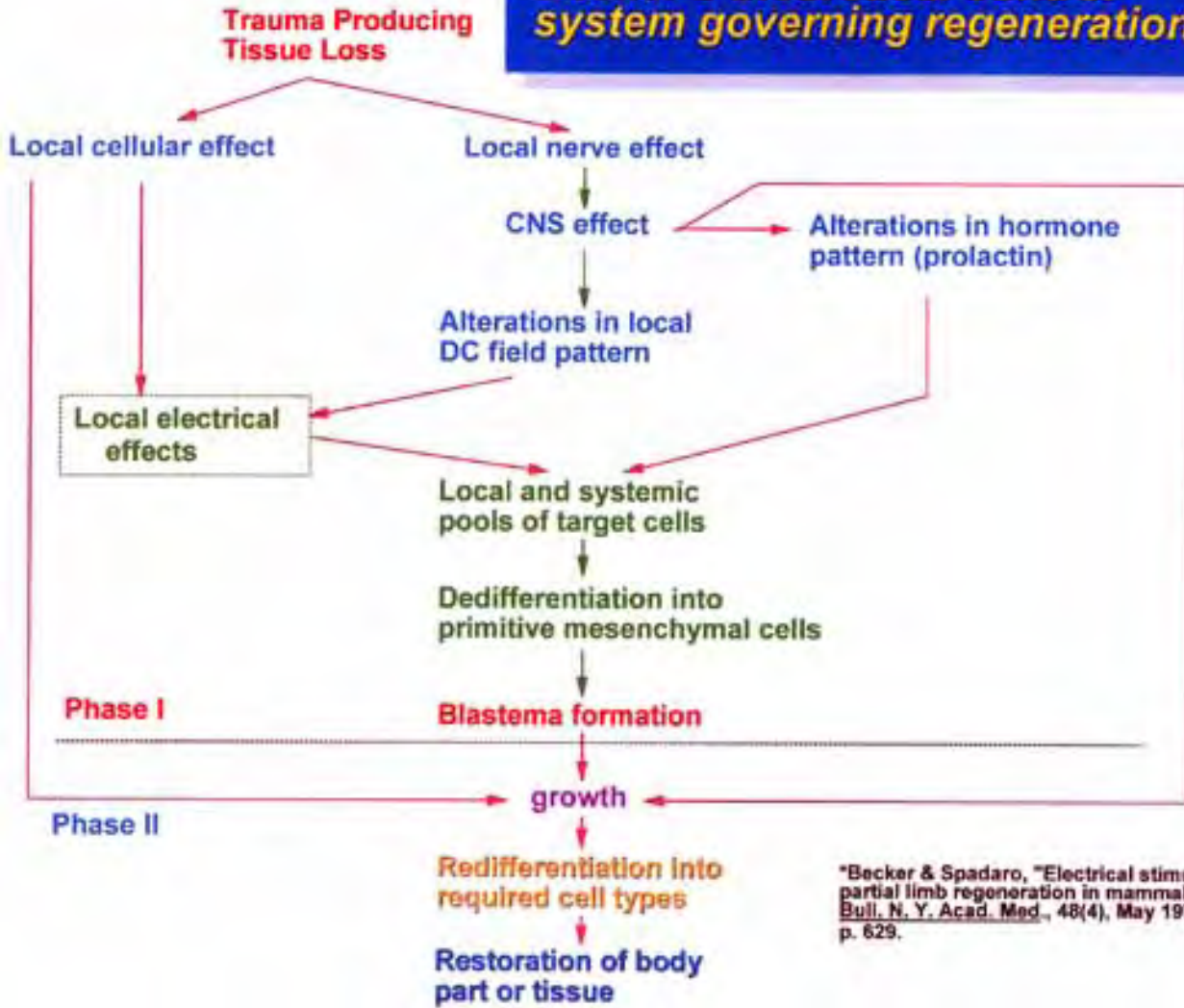
[Return to Slide Index](#)

[Next Slide](#)

[Previous Slide](#)

*Robert O. Becker, "The significance of bioelectrical potentials," *Bioelectrochemistry and Bioenergetics*, Vol. 1, 1974, p. 191.

Becker's theoretical control system governing regeneration*



[Return to Slide Index](#)

[Next Slide](#)

[Previous Slide](#)

*Becker & Spadaro, "Electrical stimulation of partial limb regeneration in mammals," *Bull. N. Y. Acad. Med.*, 48(4), May 1972, p. 629.

Link Between Standing DC Potentials and the Nervous System

- **Standing DC potentials on intact surfaces of all living animals demonstrate a complex field pattern spatially related to the anatomical arrangement of the nervous system**
 - Can be measured directly on the peripheral nerves
 - Polarity difference related to whether nerve is or is not a sensor
 - Steady (weak) current flow exists
 - Demonstrates solid state/semiconductor phenomena
 - Accurately reflects (amplitude and polarity) the general level of neural activity
 - Sleep versus wakefulness
 - Anesthesia versus conscious
 - Other parameters
- **DC levels determine the level of neural activity**
- **Action potential system exists upon a substratum of DC potentials which pre-existed it**
- **DC potentials substrata had and have control functions over basic properties of the living organism**

© T.E. BEARDEN 1968

[Return to Slide Index](#)

[Next Slide](#)

[Previous Slide](#)

Becker's Findings on Cellular Injury and Regeneration*

- Cellular processes are regulated by a precise control system
- Attempted to apply engineering control-system theory
- Cells and tissues have solid-state electrochemical features which provide control signals in the control system
 - Growth process
 - Electron transfer
 - Semiconduction
 - Self-organizing (*NOTE: Implies hidden variables and nonlocal causality*)
- Complex electrical events at the injury site initiate cellular aspects such as dedifferentiation and mitotic activity
- Regeneration is a 2-step process, each with different controls
 - Electrical triggers with threshold values results in appearance of blastema
 - Complex data transmission to blastema establishes it as a self-organizing system capable of growth and redifferentiation
 - Mammals lack ability to produce blastemas except for bone, but partial regeneration growth has been shown in response to electrical stimuli
- Growth related to electrical more than electrochemical aspects
- Hematopoietic marrow as source of cells for the blastema
 - Monocytes can take place in regenerative processes in limbs
 - Lymphocytes can dedifferentiate under certain circumstances
 - Marrow elements can be induced into osteogenesis

*R.O. Becker & J.A. Spadaro, "Electrical Stimulation of Partial Limb Regeneration in Mammals," *Bull. N. Y. Acad. Med.*, 48(4), may 1972, p. 627-641.

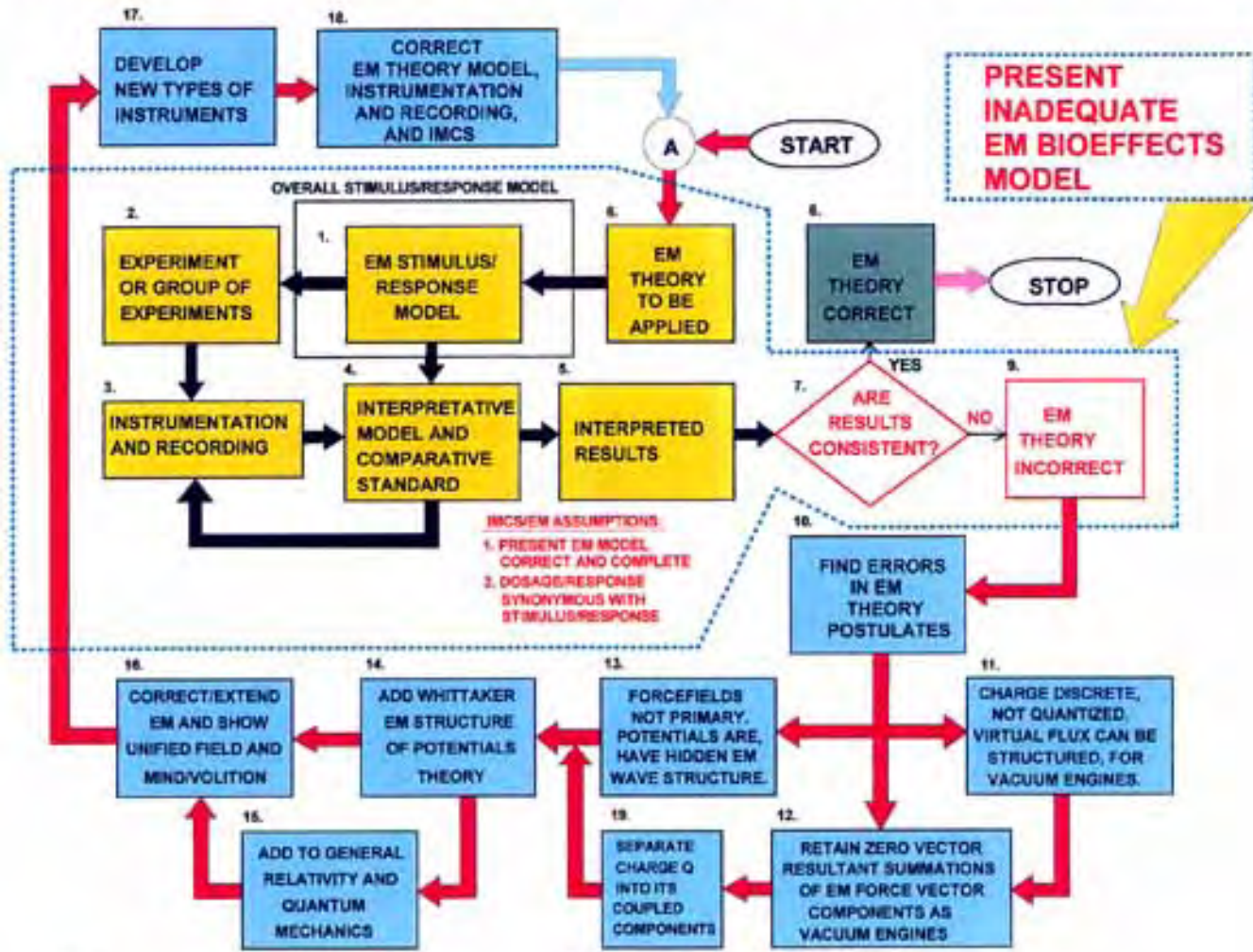
© T.E. BEARDEN 1998

[Return to Slide Index](#)

[Next Slide](#)

[Previous Slide](#)

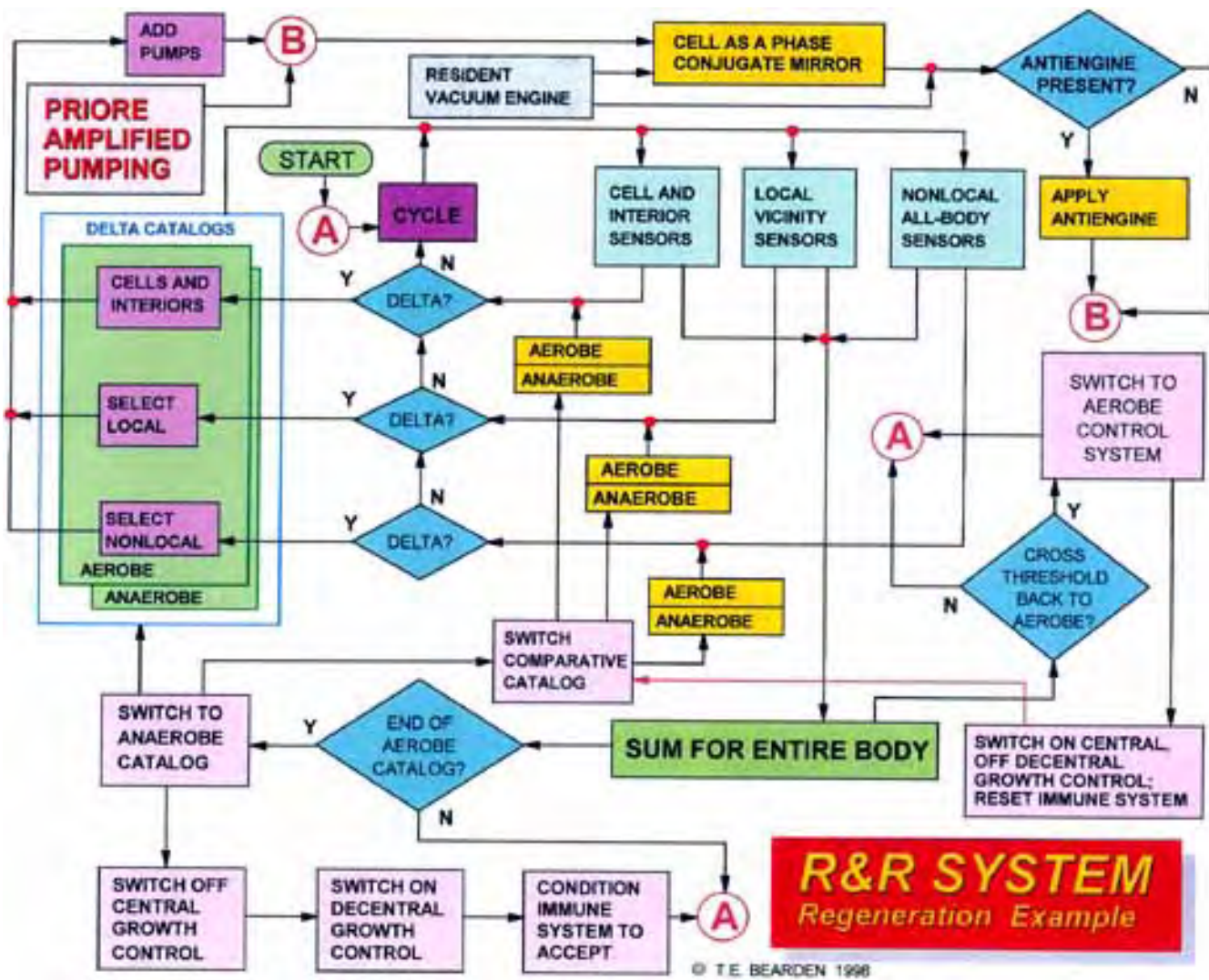
Corrections For the Present EM Bioeffects Model



[Return to Slide Index](#)

[Next Slide](#)

[Previous Slide](#)



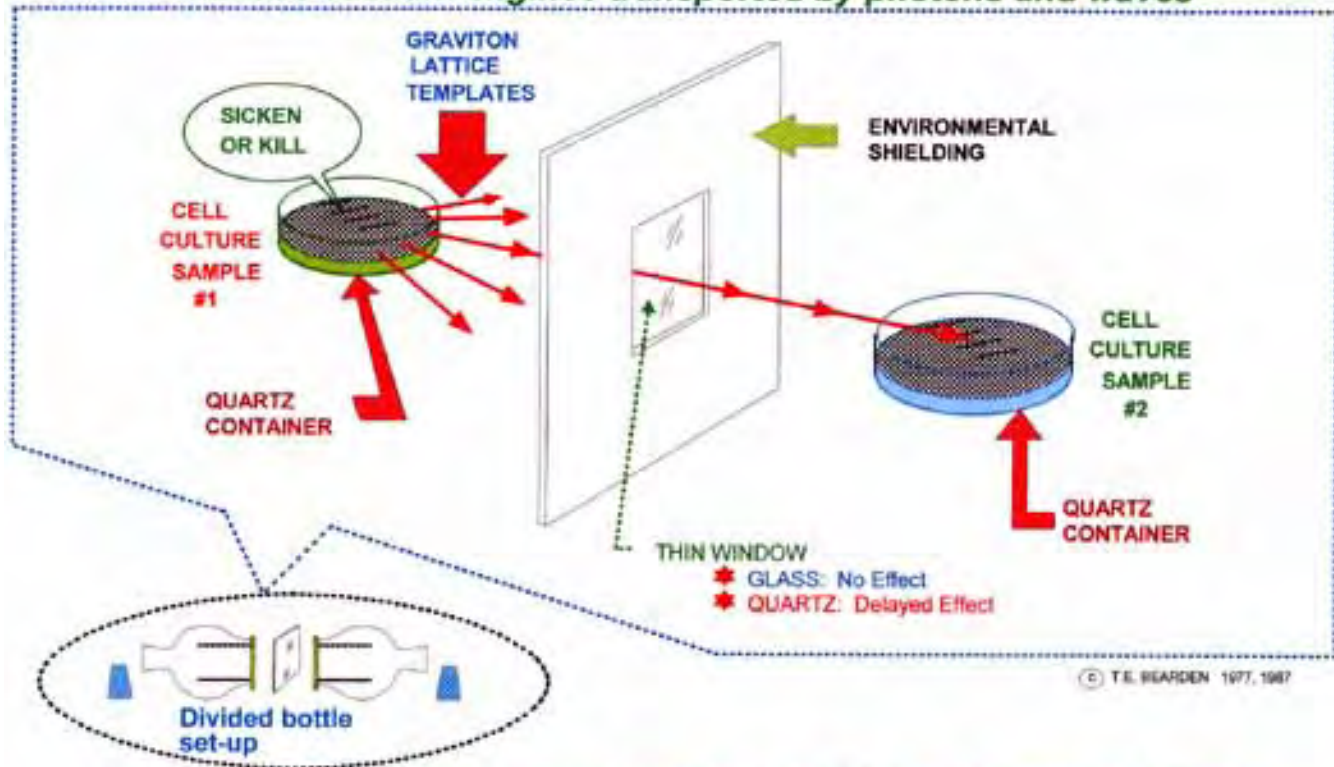
[Return to Slide Index](#)

[Next Slide](#)

[Previous Slide](#)

Kaznacheyev's Cytopathogenic Mirror Effect

Disease vacuum engines transported by photons and waves



[Return to Slide Index](#)

[Next Slide](#)

[Previous Slide](#)

Note: Minimum lattice is one harmonic interval: IR to UV is such a minimum G-lattice.

Distant induction of cellular death and diseases, by special EM means. Coupled photon-antiphoton pairs (gravitons) in a structured harmonic lattice ordering constitute the disease or disorder template.

MICROWAVE RADIATION OF U.S. EMBASSY IN MOSCOW

BACKGROUND

Former U.S. Embassy in Moscow.



Selected clipart © by Lotus SmartPics™

- Began in latter 1950s
- Discovered on VP Nixon's trip
- Initially thought to be *nuclear* radiation (Discovered w/Geiger counter?)
- High level target -- U.S. Ambassador
- Guarantees personal attention of:
 - U.S. Ambassador to USSR
 - U.S. President
 - NSA, CIA, DIA, NSC, etc.
 - Top consulting scientists
 - Leading U.S. scientific institutions
- Two U.S. Ambassadors died, another sickened
- Anomalous health changes in personnel, only in zero-field (zero pot'l gradient) areas!
- Four U.S. Presidents requested Soviets cease
 - Cut from 18 watts/sq cm to 2
 - Then again increased
- No one could understand what was going on
- Aluminum screens were placed over windows
- Moscow was declared a hazardous duty zone



[Return to Slide Index](#)

[Next Slide](#)

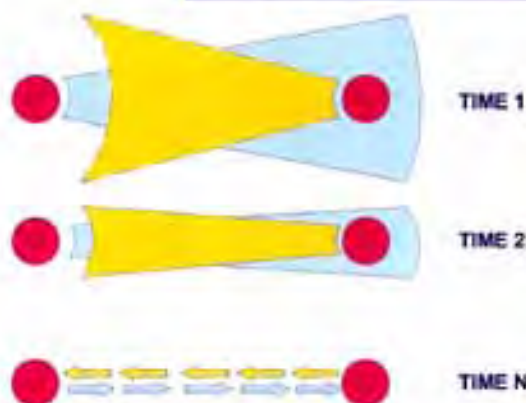
[Previous Slide](#)



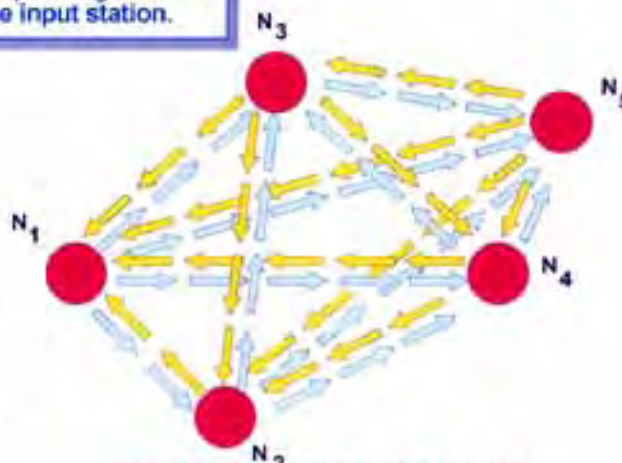
Self-Targeting in Inner EM Channel Can Produce a Quantum Potential



Once QP is established, energy transmission is direct and instantaneous. Energy input to one single participant will simultaneously appear in all other participants, the amount depending on their fractions of participation with the input station.



NARROWING OF INTERACTING POTENTIALS INTO LASER-LIKE BEAMS, BETWEEN TWO PUMPED SOURCES. NOW ONLY LONGITUDINAL WAVES CONNECT THE LINKED OBJECTS.



SELF-TARGETING EFFECT AMONG ALL PAIRS OF INTERACTING PUMPED SOURCES

© 1988, 1995, 1996 T.E. BEARDEN

[Return to Slide Index](#)

[Next Slide](#)

[Previous Slide](#)

Quantum potential and hidden variable theory

a. Quantum Potential Characteristics

(C) 1988, 1995, 1997 T.E. BEARDEN

- No point source
- Not radiated
- Quantum potential between two particles
 - Interaction does not vanish as spatial separation becomes very large
 - Instantaneous connection, so multiply-connected space

b. Hidden Variable Theory and the Quantum Potential

- $$V_{\text{quantum}} = \frac{\hbar}{2m} \frac{\nabla^2 \sqrt{\rho}}{\sqrt{\rho}}$$
- "A quantum particle moves as if it were subject, in addition to its external potentials, to a potential which is a function of its own probability distribution."
- Bohm's H.V.T. assumes:
 - Particle and wave function real and separate
 - Wave function obeys Shroedinger's equation
 - Particle obeys classical mechanics
 - Particle couples to wave function through a quantum potential

[Return
to Slide
Index](#)

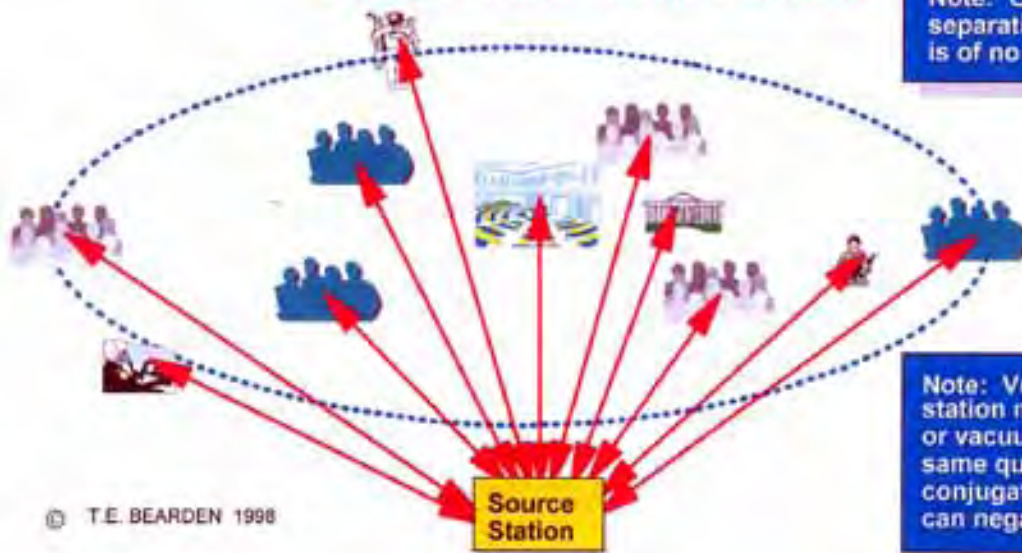
[Next
Slide](#)

[Previous
Slide](#)

Participants in a quantum potential share a common multiply-connected spacetime (MCST)

- Separated points are superposed in MCST
- Intervening distance in MCST is zero
- Connection is instant and bidirectional
- Propagation through ST does not apply
- Energy or vacuum engine input to one station instantly appears at each and every other station, undiminished in magnitude
- Ultimate net-centric warfare effect

Note: Once QP established, separation distance in 3-space is of no consequence



Note: Vulnerability. Any other station may insert energy or vacuum engines into the same quantum potential. Phase conjugating the hostile engine can negate its effect everywhere

© T.E. BEARDEN 1998

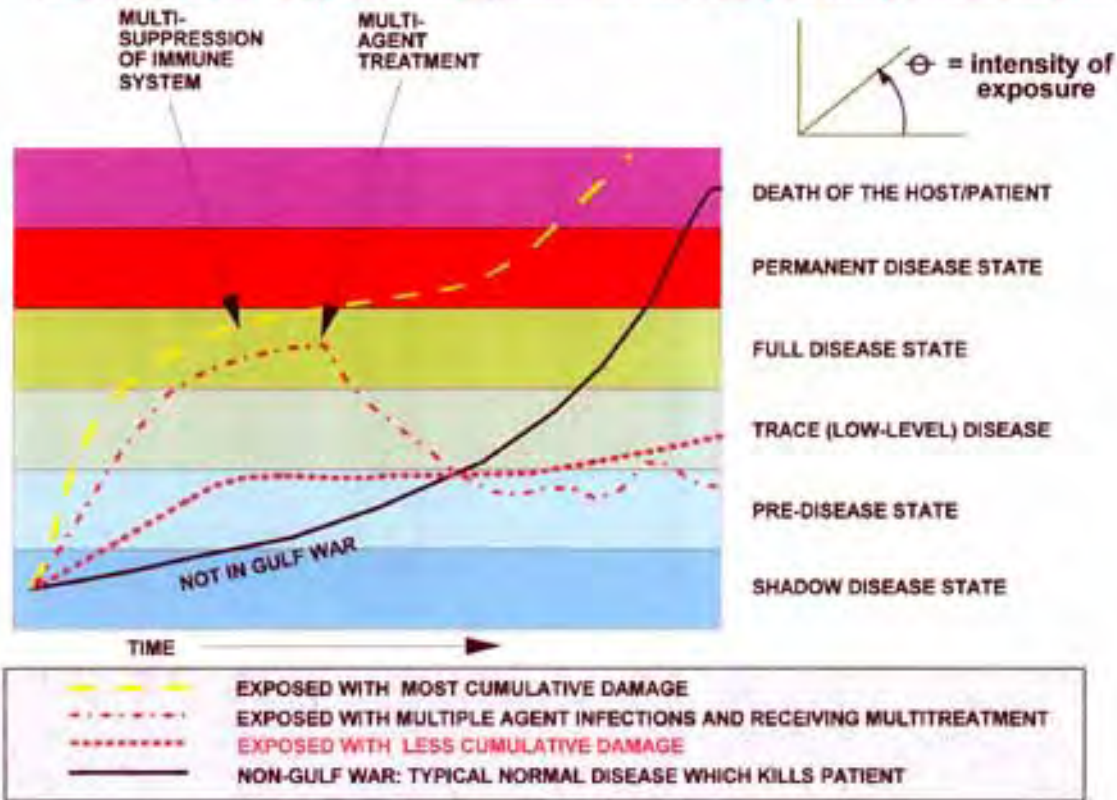
[Return to Slide Index](#)

[Next Slide](#)

[Previous Slide](#)

Gulf War Syndrome And Typical Comparative Disease Curves

Note: There is cumulative genetic damage to germ cells also.



[Return to Slide Index](#)

[Next Slide](#)

[Previous Slide](#)

Force Fields and Symmetry

- Force fields are nature's way of imposing local gauge symmetries on the world
- E.g., electromagnetic field is a manifestation of the simplest known gauge symmetry consistent with the principles of special relativity
- For the EM case, the gauge transformations correspond to changes in 'voltage' from place to place

[Return to Slide Index](#)

[Next Slide](#)

[Previous Slide](#)

© T. E. Bearden 1995, 1996

Aspects of Strong Local Asymmetry

- If local asymmetry is strong, conservation laws may be appreciably violated
 - Energy
 - Charge
 - Spin
 - Momentum
 - Angular momentum

- Properties of an object may differ appreciably for
 - Different observers
 - Different detecting means
 - One time to another
 - One position to another

- **STRUCTURING THE INFOLDED EM INSIDE POTENTIALS, FIELDS, AND WAVES**
 - Strongly breaks local symmetry
 - Provides spacetime engines giving the above effects

© T. E. Bearden 1995, 1996

[Return
to Slide
Index](#)

[Next
Slide](#)

[Previous
Slide](#)

Other Aspects of Strong Local Asymmetry

- Local spacetime is curved
- Lorentz invariance of vacuum is violated
- May be a local "sink" or "source"
- Gravitational/inertial effects from EM
- Translation between virtual and observable
- Electrogravitational solitons
- Action at a distance
- Transmutation effects may exist
- Scalar/pseudoscalar field translation
- **COMMENT:** Thus the use of infolded longitudinal EM fields and waves to strongly break local symmetry allows interested clustering of spacetime curvatures. These spacetime structures are vacuum engines, or *spacetime engines*.

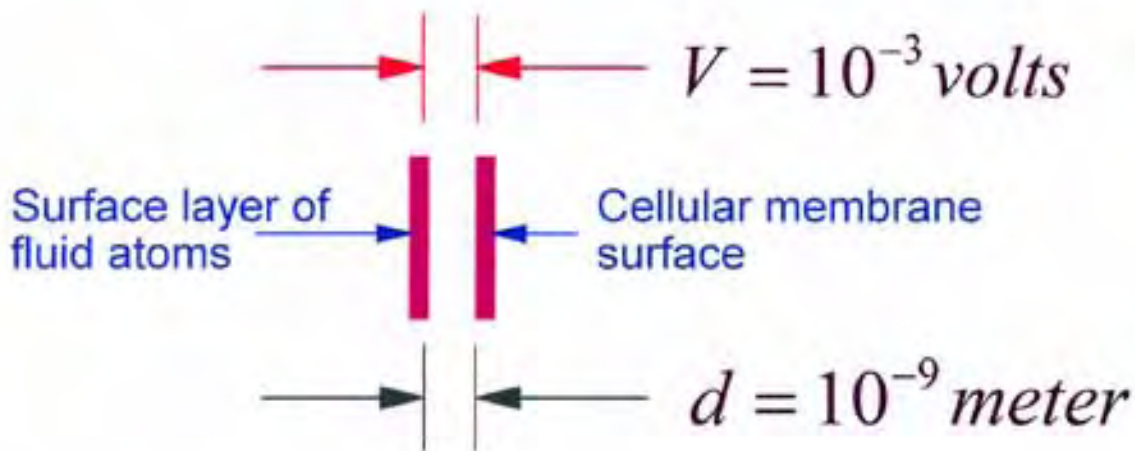
© T. E. Bearden 1995, 1996

[Return
to Slide
Index](#)

[Next
Slide](#)

[Previous
Slide](#)

Small Entities Emit Powerful S-Flows



$$E = 10^6 \text{ volts / meter}$$

$$S \approx f(E^2) = f(10^{12})$$

© 1997 T.E. BEARDEN

[Return
to Slide
Index](#)

[Next
Slide](#)

[Previous
Slide](#)

What is the "magnitude" of a potential?

- What is taught is the "*interaction cross section*," i.e., the joules collected from the associated S-flow by one point coulomb of intercepting/collecting charge.

$$W = Vq = \phi q \quad (\text{joules}) \quad [1]$$

$$\phi = W/q \quad (\text{joules/coul}) \quad [2]$$

Let $\phi < 1$ and fixed; $q \Rightarrow n$ where $n = \infty$

$$W \Rightarrow k, \text{ where } k = \infty \quad [3]$$

- *From any "finite" potential, no matter how small, an unlimited amount of energy can be collected, by increasing the collection (number of coulombs) (interaction cross section).*
- Actual magnitude of the potential ϕ must be very, very large, since we can treat it as infinite or unlimited, via $W = \phi q$.
- *Else Equation [1] could not be linear.*

© T.E. BEARDEN 1997

[Return
to Slide
Index](#)

[Next
Slide](#)

[Previous
Slide](#)

Table A1. THE VACUUM ENERGETICALLY INTERACTS WITH EVERY PARTICLE, CONTINUALLY.

- **The vacuum is:**
 - Ground (zero) state of the electromagnetic (photon) field.
 - Ground (zero) state of mass field.
 - Empty of *observable* particles or photons.
 - Filled with *non-observable* (virtual) particles and photons.
 - Violently fluctuating microscopically and electromagnetically.
 - Constantly interacting with all particles, including partially shielding their bare charges.

- **Lamb Shift -- vacuum's alteration of the energy level of an electron in the hydrogen atom.**
 - Difference in energy (frequency units) is 1057.862 MHz.
 - Lamb was awarded a Nobel Prize for showing this.
 - Energy *density* exceeds that of the sun's surface!

- **Casimir Effect -- vacuum creates an attraction between two conducting surfaces in close proximity.**
 - experimentally proven, well-known.

- **Cole and Puthoff proved that there is no thermodynamic reason why energy cannot be extracted from the vacuum as heat and power, and utilized.**

- **The common dipole is a broken symmetry in the virtual photon flux of vacuum. It extracts virtual energy, integrates it, and re-emits it as Poynting energy density flow $S = E \times H$ (which observably interacts with charged particles and magnetic poles).**

© 1993, 1995 T.E. BEARDEN

[Return to Slide Index](#)

[Next Slide](#)

[Previous Slide](#)

Extended Superpotential Theory

(Adding Vacuum Engines)

- Any EM field or wave is created by (comprised of) two potentials which interfere with each other in a given area
 - *May be either scalar or vector potentials*
 - *May interfere locally or at a distance*
 - *Process is distance independent*
- Any scalar potential is comprised of a harmonic series of bidirectional longitudinal EM wavepairs (Whittaker 1903).
- Ziolkowski circa 1985 added the interior product set to Whittaker's sum set. Thus he added modulations.
- By assembling a deliberate "sum and product" set of biwaves, a scalar potential can be created having an internal deterministic structure.
 - *This structures local vacuum potential/spacetime curvatures, in specific forms (templates)*
 - *Now have added vacuum engines*
 - *Have infolded general relativity inside electrodynamics*

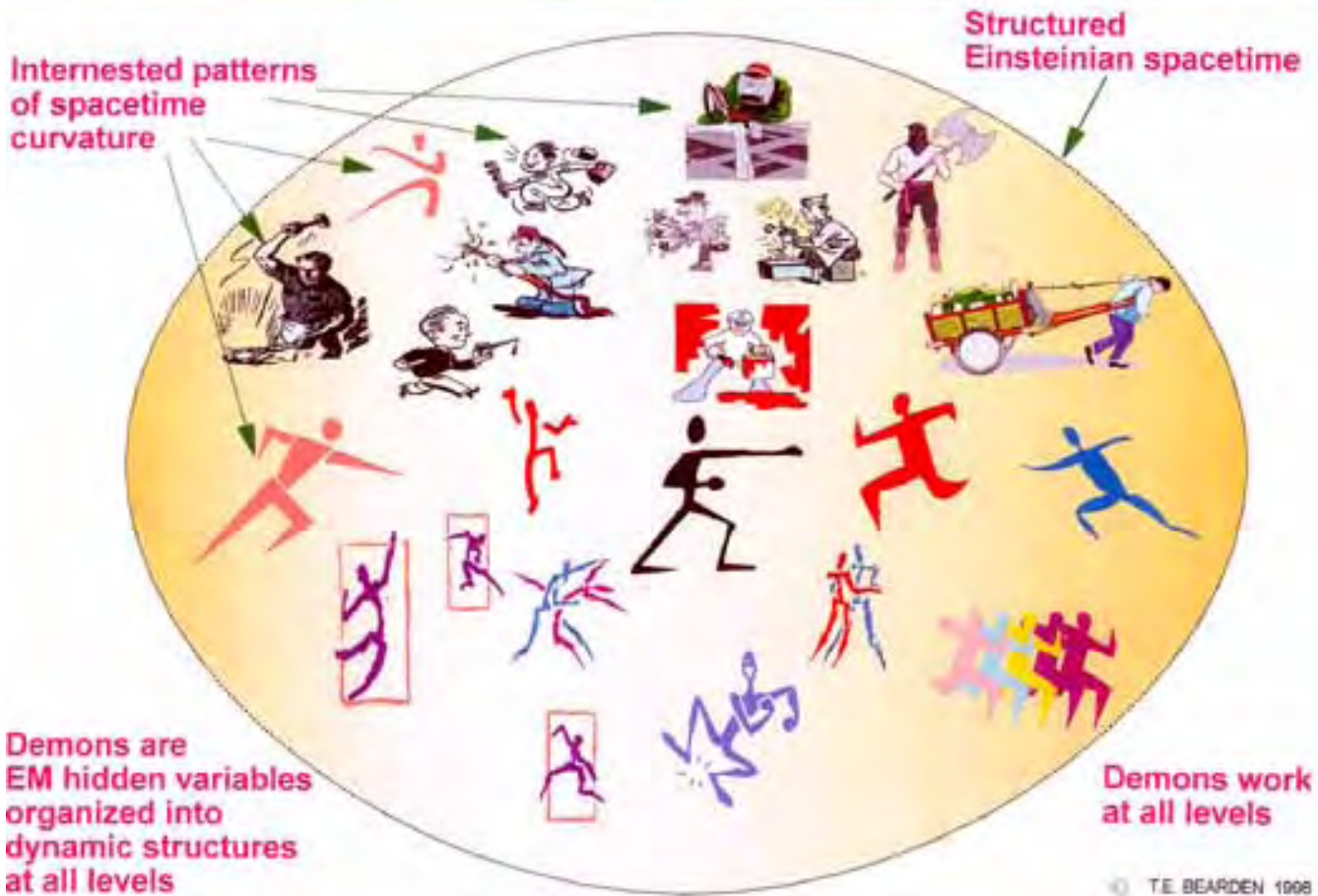
[Return
to Slide
Index](#)

[Next
Slide](#)

[Previous
Slide](#)

© 1996 T.E. BEARDEN

Vacuum Engine: Jillions of Working ST Demons



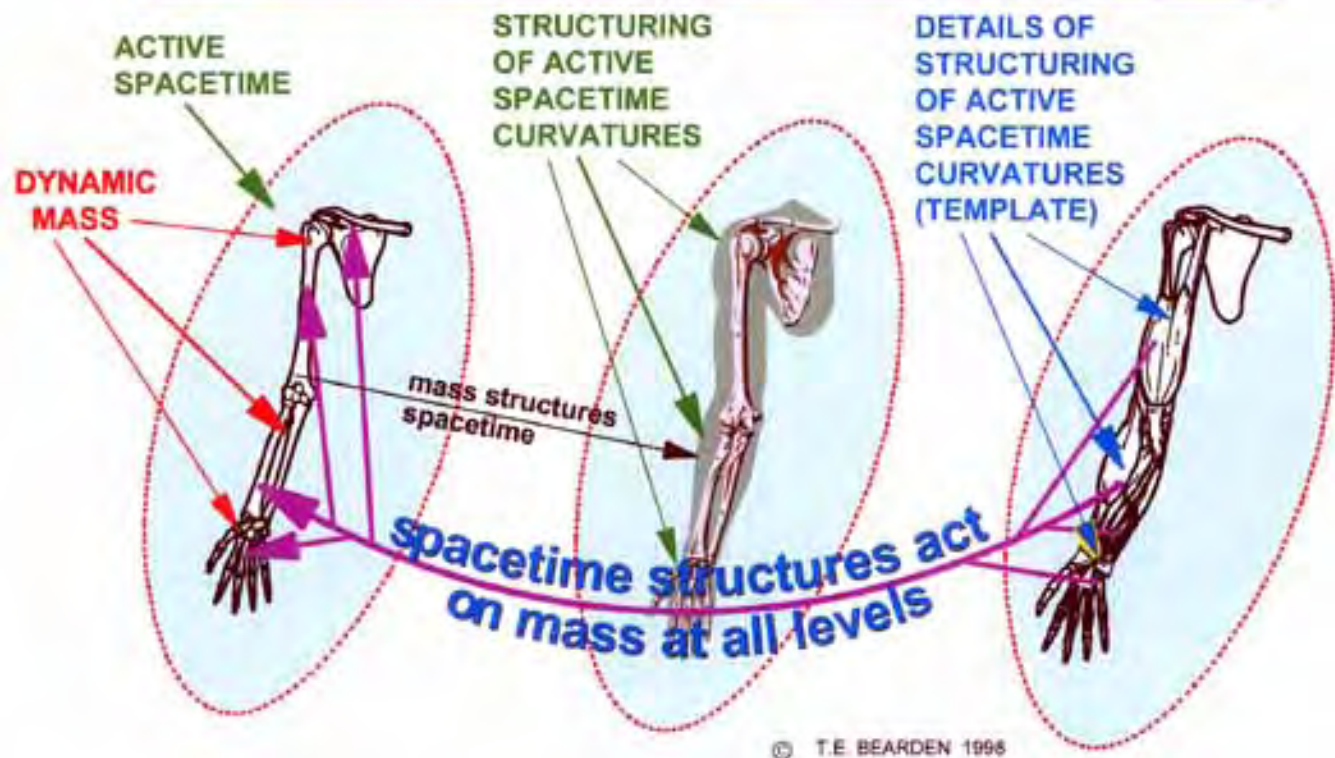
[Return to Slide Index](#)

[Next Slide](#)

[Previous Slide](#)

Active Spacetime and a Specific Vacuum Engine

(A General Relativistic Concept and Analogy)



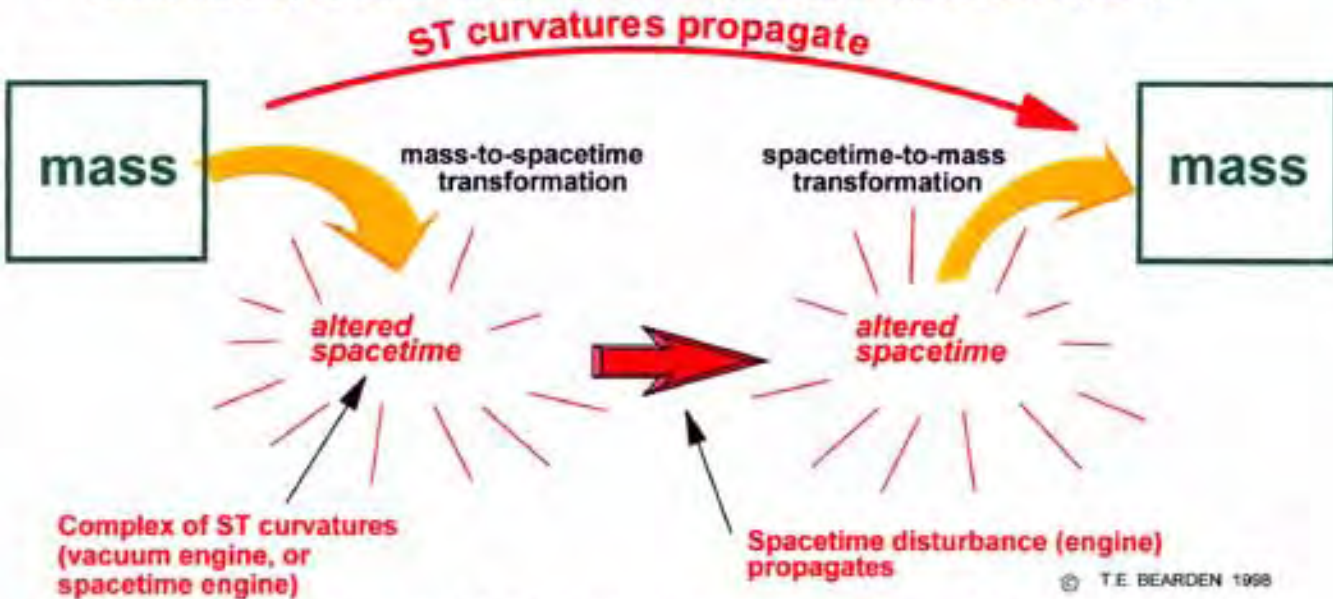
[Return to Slide Index](#)

[Next Slide](#)

[Previous Slide](#)

Extension of Wheeler's general relativity principle:

- Mass (trapped energy) and its structuring curves and structures spacetime complexes (engines).
- Curved and structured spacetime engines produce forces on mass and its components, telling them how to move and structure.
- Since very strong EM force is used as agent of curvature, very powerful general relativistic effects can be obtained by arranging the LWs in the input EM potentials, fields, and waves.
- General relativity becomes directly engineerable in devices of unparalleled capability.



Electrodynamics has a hidden but ignored electro-general-relativity infolded inside (comprising) its so-called potentials, fields, and waves (in space in the absence of mass). What are presently defined as potentials, fields, and waves rigorously exist only in, on, and of charged mass, as pointed out by Aharonov and Bohm in 1959. All of this is just longitudinal EM waves and their interactions.

[Return to Slide Index](#)

[Next Slide](#)

[Previous Slide](#)

SIGNAL VERSUS VACUUM ENGINE



★ INFORMATION RECEIVED
★ ANY OVERT PHYSICAL ACTION MUST BE TAKEN BY RECEIVER



A. Receiver must do the action itself; vacuum energy exchange is unaltered. Energy or fuel for doing the action must be added to receiver externally.

© 1994, 1996, 1997 T.E. BEARDEN

Selected clipart © by Lotus SmartPics™



★ "INFORMATION" ITSELF ACTS
★ VACUUM FLUX GRADIENTS CHANGE ALL PARTS AND CHARACTERISTICS OF RECEIVER, INSIDE AND OUT



B. Receiver is acted upon; altered vacuum energy exchange does the specific action. No energy or fuel for doing the action need be added to receiver externally.

[Return to Slide Index](#)

[Next Slide](#)

[Previous Slide](#)

Electronuclear Interactions by Vacuum Engines



- An EM potential is gravitational due to its trapped energy.
- A local EM potential is a local curvature of spacetime.
- *Structured potentials are structured (nested) local spacetime curvatures; hidden variable theory applies.*
- **Structured potentials thus are vacuum engines.**
- Gradient-free potential penetrates the atom, into nucleus.
- *With steady application, a structured gradient-free potential can be used to engineer the atomic nucleus at will.*
- Normal cold fusion systems structure a small fraction of their potentials, by chance geometries, boundaries, etc.
- This produces some new nuclides, but haphazardly.
- *The process can be developed and controlled. The nucleus can be deterministically engineered at will.*

[Return
to Slide
Index](#)

[Next
Slide](#)

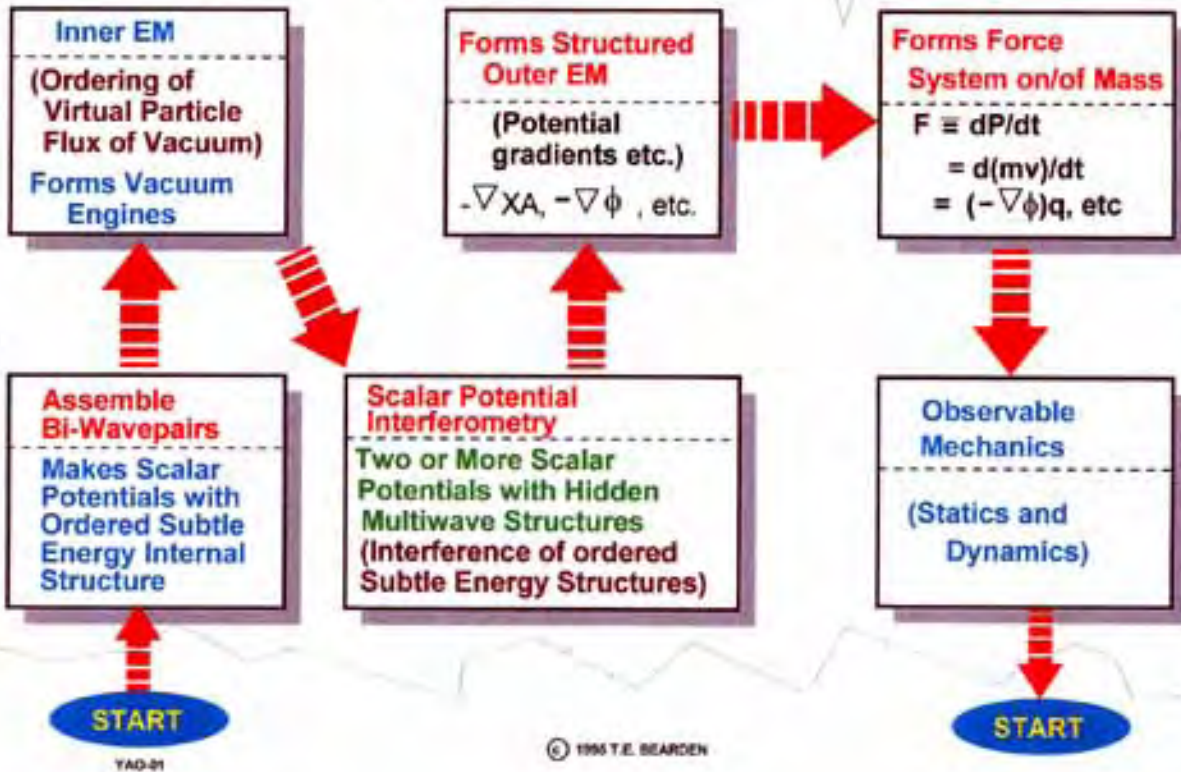
[Previous
Slide](#)

© 1997 T.E. BEARDEN

Vacuum Engineering

Using Inner EM Energy and Structuring to Engineer Physical Reality

Vacuum Potential (Violent Flux)



[Return to Slide Index](#)

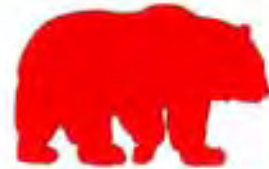
[Next Slide](#)

[Previous Slide](#)

Impact of Vacuum Engineering

- "If they [quantum fluctuations of vacuum] can be [tapped], the impact upon our civilization will be incalculable. Oil, coal, nuclear, hydropower, would become obsolete -- and so would many of our worries about environmental pollution."
- "Don't sell your oil shares yet -- but don't be surprised if the world again witnesses the four stages of response to any new and revolutionary development:
 - 1. It's crazy!
 - 2. It may be possible -- so what?
 - 3. I said it was a good idea all along.
 - 4. I thought of it first."

© 1996 T.E. BEARDEN



Arthur C. Clarke
 "Space Drive: A Fantasy That Could Become Reality"
 Nov./Dec. 1994

▪ Comment:

- *Every dipole's broken symmetry in its energetic exchange with the vacuum already freely extracts vacuum energy.*
- *In power sources, the dipole gates the extracted energy out as $S = EXH$, which flows almost entirely outside the conductors.*
- The circuit interacts with, and uses, only about 10^{-13} of S. The electrodynamicists calculate only this small S-component.

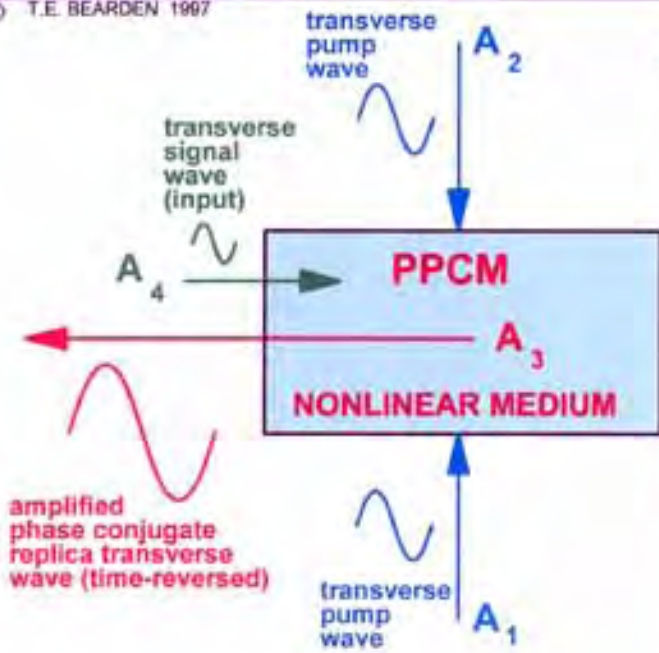
[Return
to Slide
Index](#)

[Next
Slide](#)

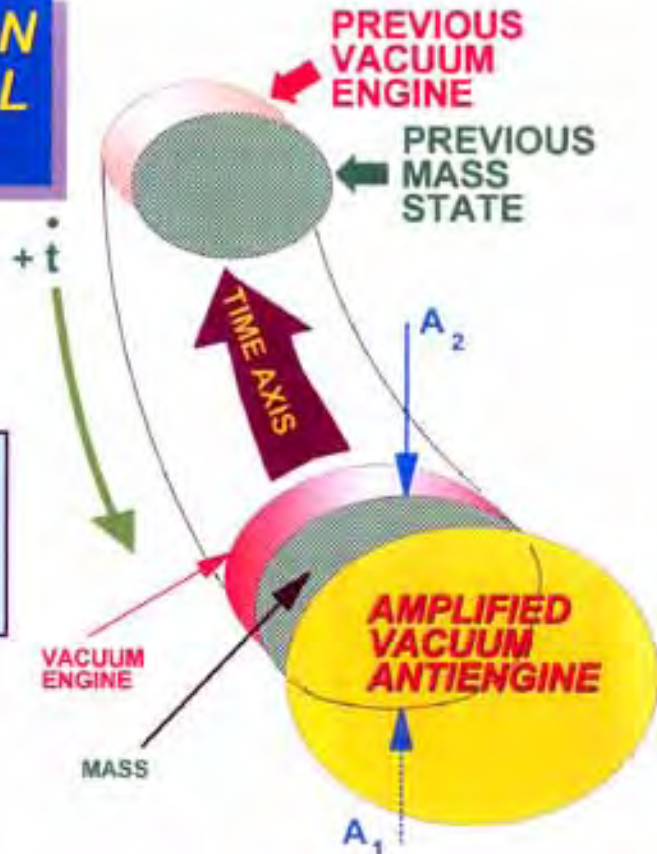
[Previous
Slide](#)

A DRAMATIC EXTENSION TO NONLINEAR OPTICAL PUMPING

© T.E. BEARDEN 1997



a. Pumping with transverse EM waves produces a time-reversed wave.



b. Pumping with longitudinal EM waves A_1 and A_2 time-reverses the mass itself.

[Return to Slide Index](#)

[Next Slide](#)

[Previous Slide](#)

Time Conservation and Some Properties

(Energy and time are canonical)

- **Time can neither be created nor destroyed**
 - *Its form can be changed, and it can be positive or negative*
 - *Time can be collected or dissipated, converged or diverged*
 - *Time can oscillate and move in waves*
 - *Longitudinal (infolded) EM waves oscillate time*
- **Time is always in motion, and that motion is variable**
 - *Collected/collecting time is a continuing stationary change in an ongoing time flow*
 - *Time/collecting time can be interested and internally structured*
- **Time has gravitational aspects**
 - *Negative (trapped) time is antigravitational*
 - *Emitting negative time is gravitational, to the emitter*
- **Nonlinear optical pumping can use longitudinal EM waves**
 - *Pumping a nonlinear mass by longitudinal (infolded) EM waves pumps it in its masstime form, in the time domain*
 - *This creates an amplified vacuum antiengine for the mass, and time-reverses the mass back to a previous state*

© 1996 T.E. BEARDEN

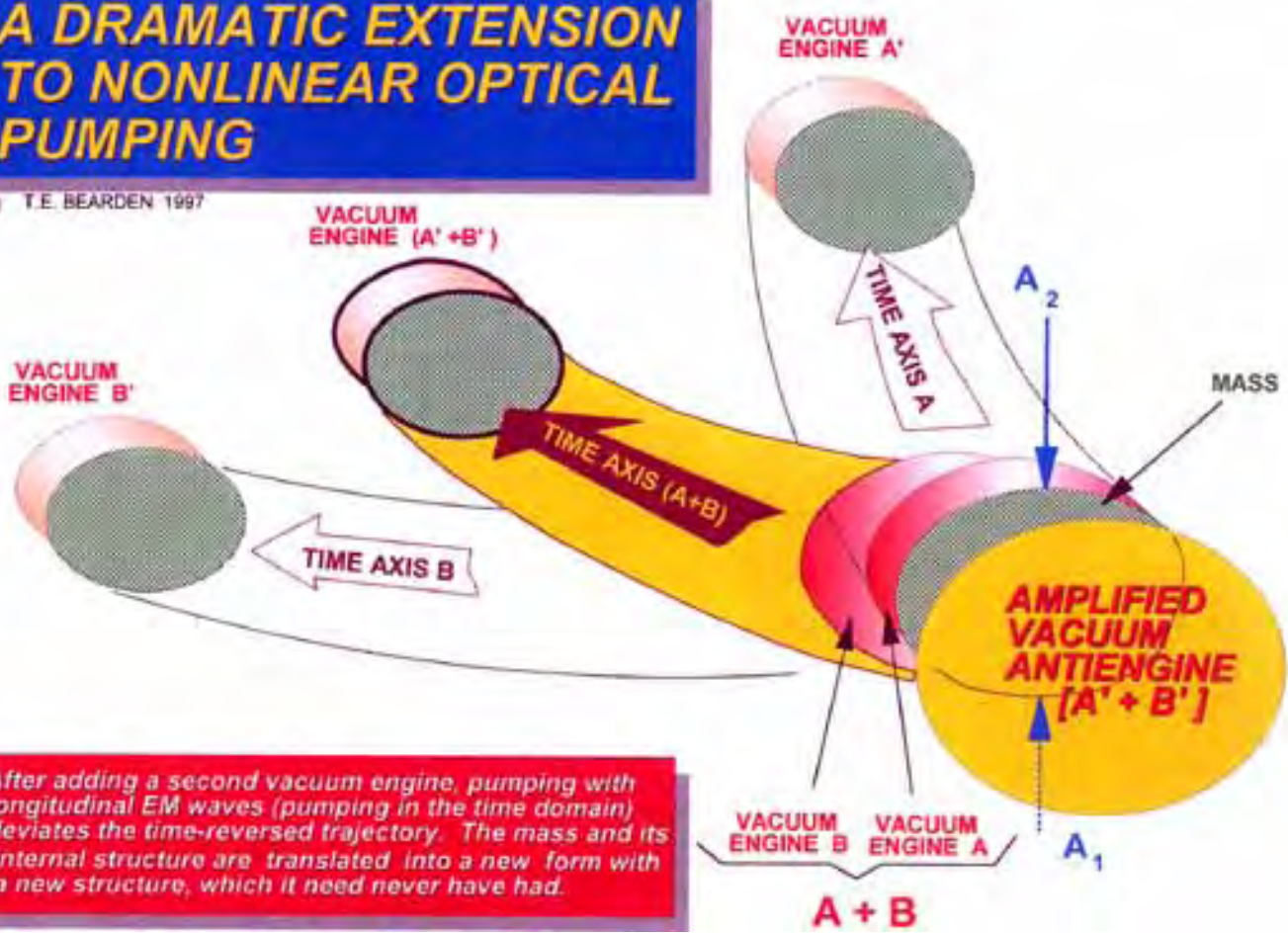
[Return
to Slide
Index](#)

[Next
Slide](#)

[Previous
Slide](#)

A DRAMATIC EXTENSION TO NONLINEAR OPTICAL PUMPING

© T.E. BEARDEN 1997



After adding a second vacuum engine, pumping with longitudinal EM waves (pumping in the time domain) deviates the time-reversed trajectory. The mass and its internal structure are translated into a new form with a new structure, which it need never have had.

[Return to Slide Index](#)

[Next Slide](#)

[Previous Slide](#)

Key Points in the New Technology

- There is a vast new kind of electrodynamics hidden inside all EM potentials, fields, and waves
 - Longitudinal EM waves and complexes
 - Oscillations in time domain
- These complexes are an infolded general relativity
 - Clustered formations of spacetime curvatures
 - Very powerful, since the EM force is used as the agent of curvature
- In general relativity, similar precise complexes permeate and act on any mass at all internal levels
- With this approach, one can now manipulate matter -- living or inert -- in any manner desired, depending only on the level of development of the technology
- Priore unwittingly used this to cure dread diseases
- This is a revolution in all of science
- We have uncovered the major mechanisms to utilize



© T.E. BEARDEN 1996

[Return to Slide Index](#)

[Next Slide](#)

[Previous Slide](#)



Terrorist WMD Strikes on U.S. Cities:



Solution to Mass Casualties Treatment Problem

- *Threat and Current Status*
- *Historical Solution: Priore Treatment Therapy*
- *Extended Physics and Background*
- ***Modern WMD Solution: Portable Treatment Systems***
- *Conclusions: Technology Practical, Proven*
- *Recommendation: Crash Development Program*

CTEC, Inc.

28 Mar. 1998

[Return
to Slide
Index](#)

[Next
Slide](#)

[Previous
Slide](#)

© 1998 T.E. BEARDEN

Portable Priore-Type Treatment System

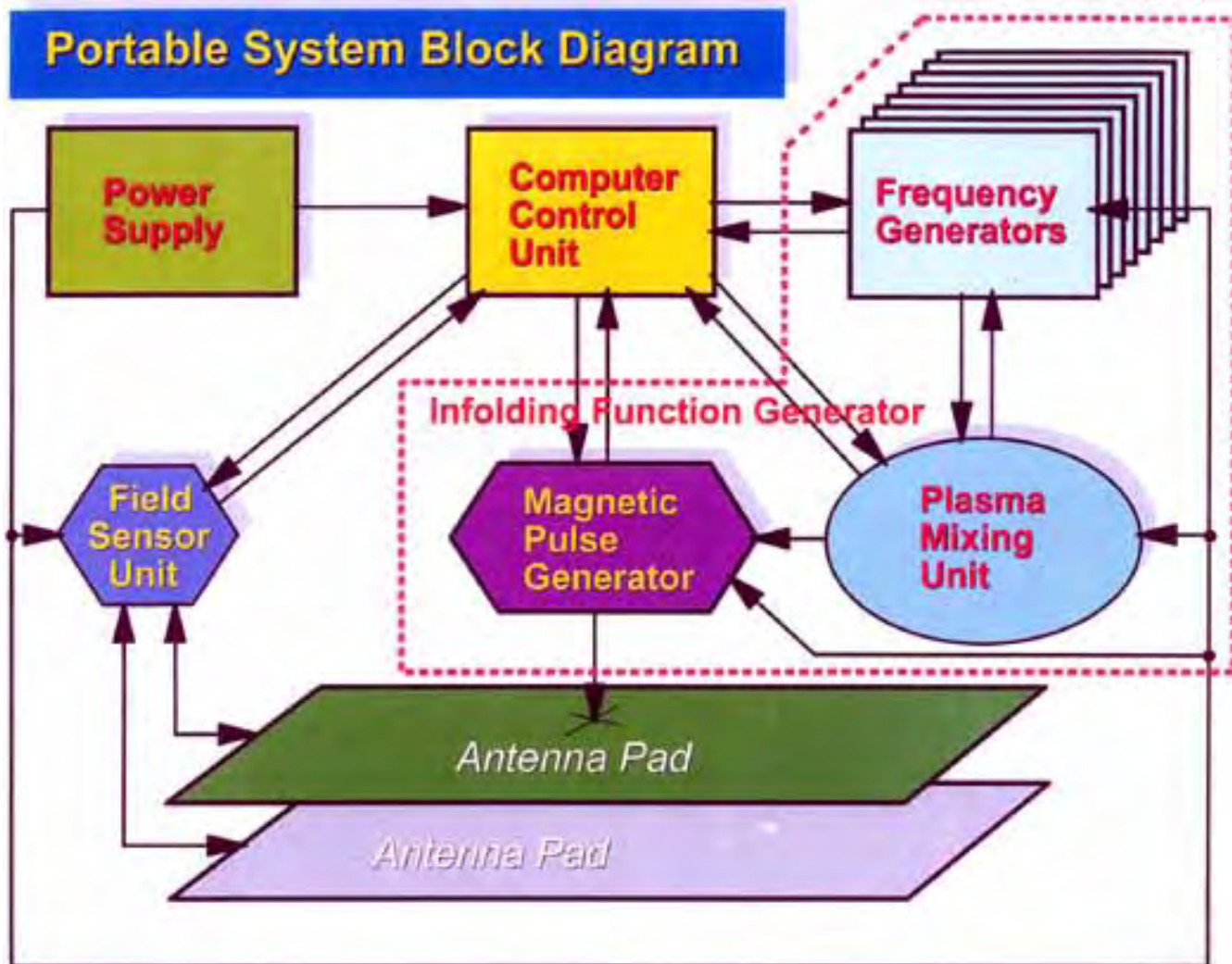


[Return to Slide Index](#)

[Next Slide](#)

[Previous Slide](#)

Portable System Block Diagram



[Return to Slide Index](#)

[Next Slide](#)

[Previous Slide](#)

PORTABLE PRIORE TECHNOLOGY UNIT

★ **FACT: DISEASE-SPECIFIC VACUUM ENGINE PRESENT FOR ANY CELLULAR DISEASE, BY WHEELER'S PRINCIPLE**



- **DISEASE CAN BE REVERSED BY CREATING AMPLIFIED VACUUM ANTI-ENGINE (BEARDEN'S PRINCIPLE)**
- **ANTI-ENGINE IS CREATED BY PUMPING THE NONLINEAR CELLS IN THE "INNER EM" DOMAIN, TIME-REVERSING THEM**



★ **PRIORE UTILIZED A PLASMA TO PHASE CONJUGATE AND "INFOLD" MULTIPLE BIDIRECTIONAL LONGITUDINAL EM PUMP WAVES**



- **17 FREQUENCIES MIXED IN A ROTATING PLASMA**
- **PHASE CONJUGATES ADDED BY THE PLASMA**
- **INFOLDED MIX INTO STRONG PULSED DC MAGNETIC FIELD, WHICH CARRIED IT INTO ATOMIC NUCLEI**
- **PUMPED ALL NONLINEAR CELLULAR COMPONENTS TO PRODUCE AMPLIFIED, SPECIFIC VACUUM ANTI-ENGINE**



★ **NEGATED THE LONG-TERM CUMULATIVE CELLULAR DEDIFFERENTIATION ORDER GENERATED BY LONG-TERM HYPOXIA. TUMOR CELLS REVERTED TO NORMAL CELLS.**

★ **SCRUBBED OUT THE CUMULATED PRECANCEROUS STATE**

★ **RESTORED THE IMMUNE SYSTEM TO HIGH FUNCTIONING**

★ **NO EXCESSIVE TRAUMA TO TREATED ANIMAL**



[Return to Slide Index](#)

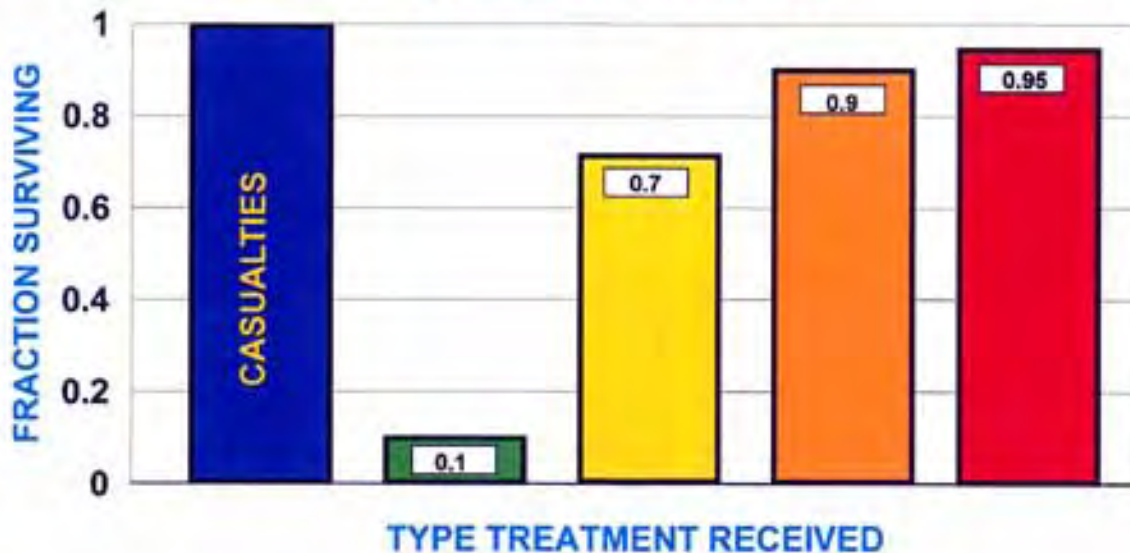
[Next Slide](#)

[Previous Slide](#)

SAVING THE STRICKEN CIVILIANS

SURVIVORS OF N CASUALTIES

(N = 1-40 MILLION)



EXPRESSED IN FRACTION SURVIVING

- With conventional treatment
- With 1st generation P-treatment
- With 2nd generation P-treatment
- With 3rd generation P-treatment

[Return to Slide Index](#)

[Next Slide](#)

[Previous Slide](#)



Terrorist WMD Strikes on U.S. Cities:



Solution to Mass Casualties Treatment Problem

- *Threat and Current Status*
- *Historical Solution: Priore Treatment Therapy*
- *Extended Physics and Background*
- *Modern WMD Solution: Portable Treatment Systems*
- ***Conclusions: Technology Practical, Proven***
- *Recommendation: Crash Development Program*

CTEC, Inc.

28 Mar. 1998

[Return
to Slide
Index](#)

[Next
Slide](#)

[Previous
Slide](#)

© 1998 T.E. BEARDEN

Summary and Conclusions

- **A new therapeutic paradigm of great scope and effectiveness has been developed**
 - *Will provide effective, quick treatment of mass casualties*
 - *Will provide cures for unknown agents*
 - *No pathogen strains are resistant to this process*
- **Results have been proven experimentally**
 - *Documented in French scientific literature*
 - *Rigorous scientific protocols, eminent scientists*
 - *Technical mechanism deciphered*
- **Will treat and cure many diseases**
 - *Aids, atherosclerosis, cancer and leukemia*
 - *Sleeping sickness*
- **Portable units can be developed quickly**
 - *18-month crash development program required*
 - *high level authority and overwatch essential*
- **Will solve the BW mass casualty treatment problem, both civilian and military**

© 1993 T.E. Bearden

[Return to Slide Index](#)

[Next Slide](#)

[Previous Slide](#)



Terrorist WMD Strikes on U.S. Cities:



Solution to Mass Casualties Treatment Problem

- *Threat and Current Status*
- *Historical Solution: Priore Treatment Therapy*
- *Extended Physics and Background*
- *Modern WMD Solution: Portable Treatment Systems*
- *Conclusions: Technology Practical, Proven*
- *Recommendation: Crash Development Program*

CTEC, Inc.

28 Mar. 1998

[Return
to Slide
Index](#)

[Next
Slide](#)

[Previous
Slide](#)

© 1998 T.E. SEARDEN

Recommend implementing:

- **Crash development program**
 - *Suitcase-sized portable unit*
 - *18-month Manhattan-type project*
 - *Simultaneous theoretical modeling, animal testing w/breadboard models*
 - *SecDef and Congressional oversight*
 - *Presidential Decision Directive*
- **Parallel logistics support program**
 - *Plan high speed production lines*
 - *Mass distribution, storage, maintenance*
 - *User, maintenance training*
 - *Plan C4 and usage at all levels*
 - *Integrate firemen, police, National Guard, FEMA, medical facilities, etc.*

[Return to Slide Index](#)

[Next Slide](#)

[Previous Slide](#)



[Return
to Slide
Index](#)

[Previous
Slide](#)

Final Thoughts:

- ***The current internal BW threat can and will kill more Americans than all our previous wars combined***
- ***The Priore technology is the only solution in sight that can save most of those casualties***



CTEC, Inc.
2311 Big Cove Road
Huntsville, AL 35801
(256) 533-3682 Ph/
(256) 530-5051 Fax

CTEC, Inc.

June 24, 1998

Dr. Jane F. Kinsel, Director
Office of Policy Analysis
Department of Health & Human Services
Bethesda, MD 20892

Dear Dr. Kinsel:

Your letter of June 8 is appreciated. However, the entire action package had already gone to the Assistant SecDef and also to Major General Neary in the USAF.

The proof of a revolution in medical treatment was in the package. The basis for it is already demonstrated experimentally in the scientific literature, both in the U.S. and in France. We are speaking of something already proven, but missed by the entire U.S. medical community. Strong words, but true. Let me be specific.

Any cell in the body can be time-reversed (physics term) or dedifferentiated (biology term) back to an earlier state, by pumping (i.e., "squeezing" in simple terms) that cell with longitudinal EM waves as pump waves. There are considerable papers in the French scientific literature showing the experimental results.

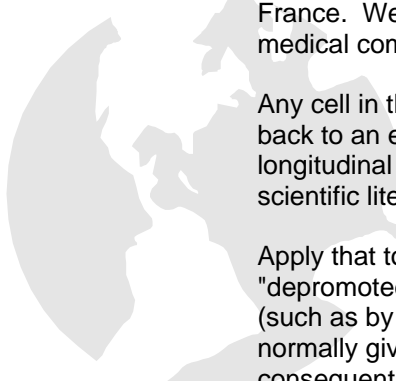
Apply that to cancer. We are stating bluntly that all cancerous cells in the body can be "depromoted" back to normal cells easily. Further, the damage previously done to them (such as by sustained hypoxia due to contaminants reducing the oxygen-carrying ability normally given to it by some 60-to-80 surrounding water molecules per red cell and the consequent H-bonding interactions) will also be reversed. The cells can all be returned to healthy, normal cells again, without "killing" or "burning" or "cutting" anything.

With some development of the technology, you can quickly and easily cure every cancer patient in every hospital in the United States.

Now apply it to AIDS. Since you can time-reverse every cell in the body, you can time-reverse the HIV-infected cells – genetics and all – right back to normal cells with normal genetics. Those cells not infected and healthy, will just get a "little younger" again.

So with that small development, you can quickly and easily cure every AIDS patient in every hospital in the United States.

I would have thought that NIH would certainly be interested in such a revolutionary therapy which has already been demonstrated in laboratory experiments. World-renowned French scientists – such as the eminent parasitologist Pautrizel and research PhDs assigned directly by Robert Courier, head of the Biology Section of the French Academy of Sciences, worked with Prioré in performing those startling experiments that proved what we are saying.



June 24, 1997

Page 2

The method was rigorously shown to cure infectious diseases (such as trypanosomiasis), atherosclerosis (which now afflicts millions of Americans), and terminal tumors. It was shown to reverse suppressed immune systems back to normal vigorous functioning.

Please permit me to disagree with you that the examination of such is not the mission of the NIH. To the contrary, it is precisely the NIH which should have some of its very best scientists looking into this.

The action package to DoD was to propose a crash program to develop this methodology in the form of a small, portable unit for treatment of mass casualties resulting from a terrorist BW attack on our cities (now expected in the next few weeks, as you must be aware). The leading Arab terrorist of the world has already promised just this.

We are speaking of several million Americans who are going to die. They are going to die in spite of everything that NIH and its labs can do, even though I know you will make a heroic effort. With NIH present methods, you cannot do very much for those stricken Americans at all. Everything we have in the "normal" kit bag is almost useless against a knowledgeable spray attack of modified smallpox (as you know, the Russian secret BW labs have made and sold tons of that already, to guess who!). Or a spray of tularemia (you are well aware of the extreme lethality of that), or anthrax (easily obtained). It is also common knowledge that these terrorist teams with their BW agents are already on site in this country, waiting for the word to attack. This has now been officially raised to our primary Strategic Threat.

In the face of such looming strikes on the U.S., I simply cannot believe that the NIH does not feel it within their mission to rigorously check out a proposed method for saving perhaps 70% of those coming deaths (first generation equipment), and up to 90% with second generation equipment.

Perhaps you just did not read the package carefully. I urge you to do so.

Else NIH is going to look very, very bad when (1) the strikes do occur, (2) they can't handle them (and they cannot, as you well know), (3) they had within their hands in advance, a proposed methodology that could have been investigated intensely, to save millions of those stricken Americans.

As a staunch supporter of NIH and especially CDC, I have to believe that there is a different attitude there. If NIH is not interested in a previously experimentally demonstrated method of saving millions of Americans, then the only recourse left is the political channel.

I assure you that my critique of electrodynamics is well-founded, as supported by various leading physicists such as Nobelist Feynman (who stated bluntly that the field concept is wrong), Wheeler, Bunge, and so on. It is inexplicable why all our universities are still teaching a 130 year old abridged (Heaviside's) subset of Maxwell's theory, and one that still contains a material ether even though that was falsified 110 years ago!

You already have seen the misuse of this technology by the Russians, in the decades-long radiation of the U.S. Embassy in Moscow. Is it not NIH's mission to understand how they generated all those diseases and health changes? Have you ever looked into Kaznacheyev's experiments showing that ANY cellular disease or disorder can be induced in cells at a distance by purely EM means? Have you looked into what got eliminated from electrodynamics by ignoring the hidden longitudinal EM inside every potential, field, and wave? Do you realize what ignoring that has done to American chemistry, biochemistry, and medical science?"

I would hope that the NIH would at least be interested in its own mission area!

June 24, 1997

Page 3

I challenge you bluntly to admit that no one presently understands the primary operation of the human cellular *regenerative* system. That's because its technical principle is not presently in our recognized physics, biochemistry, and medical science – even though it has been in the hard physics literature since 1903-4. Becker's epochal work came closest; since he only had access to the conventional EM model, it failed him. But he at least showed you rigorously that cells can be changed (both differentiated and redifferentiated) all over the map by laughably weak EM – picoamperes of current, which means persistent DC potentials. In the microwave radiation of the U.S. Embassy, all the health changes occurred in regions absent of fields – i.e., absent of bleed-off of the potentials. Hence in regions of stable DC potentials! With 100% correlation of the health changes to persistent, gradient free potentials, and 100% anticorrelation to changing potentials (i.e., fields), our own scientists concluded totally erroneously that it could not have been the EM radiation causing the changes, when their own results had just proven that it was.

Now I ask you: Can NIH explain how it was that the DC potentials caused those health changes? I think not. If it could, it would understand the action package I wrote, and its importance.

This is not a "political" letter. I'm just an ordinary American citizen who has done about 30 years very hard work on this particular area. The work is good enough now to stand on its own merits. The scientific community will eventually accept it, about 50 years from now. But we cannot wait 50 years! Those millions of Americans are going to die, because of the bureaucracy and inaction of our own scientific organizations. Whether they like it or not, the U.S. scientific community is now the forefront of the struggle for this nation to survive. And they are failing us dramatically.

So as a parent who wants his children to live, and his neighbors' children to live, and those millions of soon-to-be stricken Americans to live also, I urge you to at least have someone competent in physics (and knowledgeable that the foundations of physics itself are in woeful shape!) check the work. Has anybody there *read* any of the references to the Prioré work I cited? Does anyone there realize that *there are no EM forcefields in space?* Probably not.

Dr. Kinsel, there is a time for "business as usual" and there is a time to do some serious new work. Those stricken Americans are going to be lying there. Nothing NIH can do is going to stop that. That's a given, and it is not my own estimate. It's the official estimate. And you *know* you presently do not have the tools to do anything really effective about it.

Frankly, I interpret your letter to me as just the normal "spin control" for easy disposition. I would hope that NIH would seriously rethink the situation, get off the "spin control" and "business as usual" posturing, and do something dramatically different for a change.

What have you got to lose? A little time from perhaps two or three of your best scientists.

What have you got to gain? Saving untold millions of American lives. A new, *already partially demonstrated* cure for most dread diseases such as AIDS and cancer – diseases which you presently cannot do very much about in spite of decades of heroic struggle.

Sincerely,

cc: Senator Shelby, Congr. Cramer

T.E. Bearden
President and CEO

•
•
•
•
•
•
•

CTEC, Inc.
T.E. Bearden, President & CEO
2311 Big Cove Road
Huntsville, AL 35801-1351
(256)533-3682 ph/(256)536-0411 Fax

CTEC, Inc.

May 12, 1998

Dr. Harold Varmus, Director
National Institute of Health
Bethesda, MD 20892
(301) 496-1766

Dear Dr Varmus:

We have recently sent action documents to the Director of Nuclear and Counterproliferation, Office of the DCS, Air and Space Operations, HQ USAF and to the DoD (General Busbee) Assistant Secretary of Defense, as well as several Senate and House committees, which may be of interest to you. For one thing, we give the technical mechanism used to generate the Gulf War Syndrome. The same weaponry is now being used to rapidly induce new strains of certain pathogens worldwide. I urge you to closely read that section of the letter to MG Neary which explains the GWS, why the French did not get it, and why Southern Iraqis got an increase in cancer and leukemia but not GWS. Also explained is how the "microwave radiation" of the U.S. Embassy in Moscow induced diseases for decades, and how we failed to comprehend it because the standard EM model deceived us.

There is a way to treat and quickly cure most diseases, including the mass casualties resulting from a terrorist BW strike on our civilian population centers, our military bases, or our forces in the field. The method is little known, but was scientifically demonstrated in France in the 1960s and early 1970s before cancellation of the Prioré Project when the French Government changed. Eminent French scientists worked on the project, and the results are fully documented in leading French scientific journals. References are listed in a separate attachment.

Previously the Western scientific community has been unable to understand the technical mechanism responsible for such remarkable cures, because of serious foundations flaws in Western physics and electrodynamics. *Foundations* physicists have long been aware our science is flawed, and have pointed out many of these fundamental errors. However, the operational science establishment has not paid attention, even though physicists such as Feynman and Wheeler pointed out that the notion of "force fields in space" was totally wrong.

As a primary example, there is an "infolded" electrodynamics inside all potentials, fields, and waves that is far more primary than the coarse EM that is in our textbooks. It is actually an infolded general relativity, and this is what the Russians have weaponized. This infolded EM-GR has been ignored in the West (but not in Russia) since 1903.

As another example the potentials, fields, and waves of present electrodynamics are rigorously defined – and exist – only in the presence of mass. They do not exist in such form (force fields and oscillating force fields) at all in space, in the absence of mass. Rigorously, Maxwell's equations are mass-to-mass transforms, since Maxwell and everyone at the time assumed the ubiquitous presence of the material ether. In other words, to the founding electrodynamicists, there was no place in all the universe that was devoid of mass. Hence they defined all EM entities as entities containing mass. Even though Michelson-Morley experiments of more than a century ago destroyed that material ether, not a single Maxwellian equation has ever been changed! They still assume the material ether.

• • • • •

Specifically missing from our electrodynamics are two essential transforms: (1) the mass-to-spacetime transform, and (2) the spacetime-to-mass transform. In other words, these two transforms are "infolded" or hidden inside (comprise) the end point extremum case – the mass-to-mass transform actually written by Maxwell.

But these two missing transforms are just general relativity (they correspond precisely to Wheeler's principle of general relativity). So general relativity has always been infolded inside electrodynamics as we know it, but ignored. Further, this is a very powerful general relativity, since it uses the very strong EM force as the agent of spacetime curvature. Hence now one can engineer a powerful general relativity in the laboratory and in practical devices, and even action-at-a-distance, which one cannot do using merely the staid and weak G-force.

It turns out that longitudinal EM waves as shown by E.T. Whittaker in 1903 and 1904 are far more primary than our present EM theory and even our present GR theory. Both EM and GR are directly engineerable using longitudinal EM waves, including subluminal and superluminal EM waves in vacuum, and including action at a distance. One can engineer complexes of spacetime curvatures as desired, which in turn are *spacetime engines* (Wheeler's term). These engines can act upon mass – either living or inert – in any fashion desired, and at any distance desired.

The little-known and poorly understood Regeneration & Recovery (R&R) system – as contrasted to the immune system – utilizes this exact "spacetime engine" methodology to restore damaged or diseased cells, within its limitations – "dedifferentiating" or "time-reversing" them back to normal. The mechanism is fully explained in the attached package. The proposed program applies this fundamental method to greatly amplify the effect. Thus cancer cells can be reversed back to normal cells, HIV-infected cells (HIV-factories) can be reversed back to normal cells (genetics and all), etc. This represents a dramatic and unparalleled new medical therapeutic methodology of extreme power. The same techniques can simply be conjugated one additional time, and used to produce diseases and cellular changes at a distance, including in entire mass populations, as the KGB is doing right now. Specifically, by impressing an extremely weak "cocktail mix" of disease spacetime engines on the U.S. populace, the immune systems are reacting and being "spread thin" across several "shadow state" infectious pathogenic conditions. Thus when an actual terrorist BW attack occurs, the lethality of the strike will be remarkably enhanced because the immune systems will be "thinned" in their ability to fend off this new pathogen. By doing it this way, BW warfare can actually be conducted upon the U.S. without anyone being the wiser.

Our very survival as a nation is threatened by remarkable KGB weapons using this fully documented, extended electrodynamics. Bluntly, unless we take off our scientific blinders and understand Russian energetics weapon science, GWS and the Embassy health changes in Moscow were just a picnic before what is upon us. After two decades of work on the KGB energetics weapon problem, we have fully deciphered the technical mechanisms and what energetics is, as well as citing many of the Russian weapon tests and how they were done. Again, you can see that for yourself in the package.

Now that we understand the technical mechanisms, we are proposing rapid redevelopment of the Prioré process, in portable suitcase-sized units to be mass produced and filtered down into the entire emergency community for mass treatment of lethal infectious diseases resulting from BW strikes. And we are strongly urging the U.S. scientific community to quickly investigate and come to grips with this vast new *biological engineering* mechanism. Our very survival depends on it.

The inclosed documents provide an overview of the process. There is nothing else on the scientific horizon that can save the majority of all those stricken Americans, once the first foreign-sponsored terrorist teams strike our population centers with BW agents.

Sincerely,

Incls: Full package with table of contents

T.E. Bearden
President & CEO