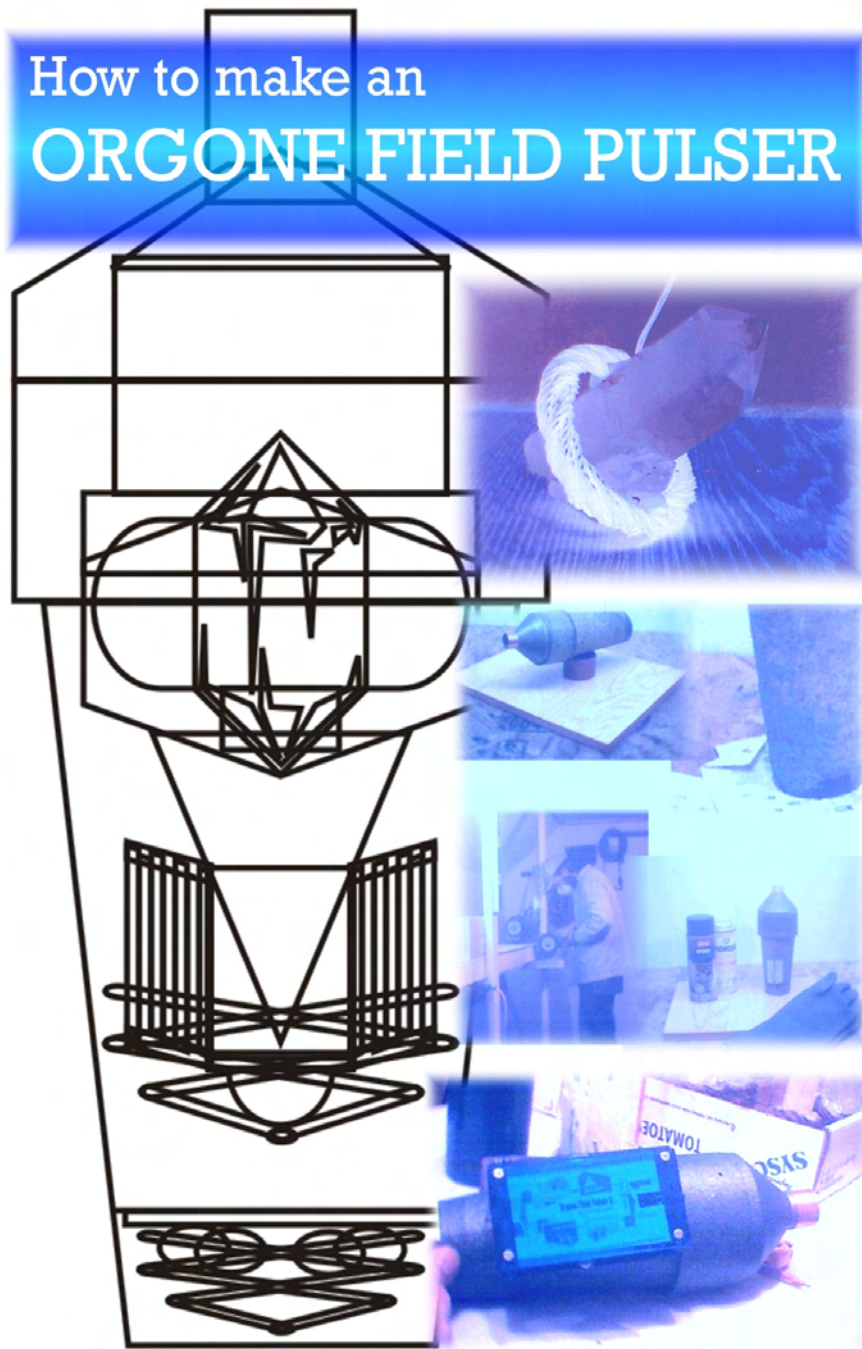


# How to make an ORGONE FIELD PULSER



**Previously Unreleased Construction Details of 2nd generation Orgone Field Pulser II  
Mobius-driven Bioenergy Generator** Design adapted for construction from readily  
available materials with **basic handyman skills & tools. Additional free info included**  
Published by Wizzer's Workshop © Jon Logan 2003 - 2005 all rights reserved.

## Preface

Hi, and thanks for supporting ongoing Bioenergy research and development taking place at Wizzer's Workshop with your purchase of this booklet.

It is to be understood by the reader that in this booklet, "bioenergy" refers to an omnipresent background energy form which is generally found in higher concentration within living organisms. This energy is known by various names such as Orgone, Reiki energy, Bioenergy, Biomagnetic Energy, Odic force, Prana, Chi, Etheric energy, and Aether, to name a few. It is a biological animative energy which has magnetic, thermal, wave, fluidic and optical properties. It is a form of energy which is capable of influencing its environment in subtle but powerful ways. It causes changes ranging from subtle chemical or magnetic effects through to marked emotional responses in living organisms under some conditions. This is still a growing science.

Personally, it is my view that acknowledging this energy form and understanding it more fully is in the best interest of humankind, and it is to that end that I offer this and other information on the subject. The experimenter (that would be you, dear reader) assumes responsibility for any consequences which arise from the construction of this experimental device and/or its use.

The device illustrated here is a versatile and powerful bioenergy tool which both generates and modulates life energy. **When combined with an audio feed from an audio recording or the sound card of a PC, it demonstrates many of the capabilities of much more complex and expensive frequency therapy devices (like "rife" machines).** It also has applications in radionics, providing both an amplified output for radionics circuits, and (via the mobius coil) a means of modulating the bioenergy discharged with radionic information. It can be used as a standalone device or in conjunction with existing radionics machines.

The OFP is a design I have had consistently good feedback with over several years. The design has gone through successive stages of development and adaptation. In this booklet, I have adapted the design to be made from readily available materials. The design does not depend on precise geometry, pleasant appearance, or even that the materials used be exactly as depicted (even though I would suggest that they should be, until you have at least built one as depicted before making changes to the design). As long as the same basic parts are put together in the same way, it will work. The quality of workmanship and materials, as well as the care put into the construction, do of course have an effect on the finished product.

In simple terms, this device makes use of the fluid characteristics of bioenergy, and also makes use of the wave properties of bioenergy. It is an Aether vortex chamber (created by the mobius coil) surrounded by a casing of Bioenergy-generating material. The result is that you have a stream of Bioenergy coming out of the device, and the stream of Bioenergy carries a wave pattern determined by the signal used to drive the coil. You will get this effect even if you just cast a coil inside of a rough chunk of Ergonite (my name for the bioenergy-generating material). Even when there is no current going through the coil there is still a smaller vortex generated by the coil. The pulser design as offered here is the result of several years R&D and it is my hope that you will find the information useful and comprehensible. My contact information is included at the end of this booklet, and I welcome your feedback.

This book is partially the result of requests via email for more information on how to build this device. If you have just bought this book but have never heard of Orgone Energy before, then there are several free articles with basic information available for download from <http://www.littlemountainsmudge.com/info.htm> and links to other informational resources that should help to fill in the blanks.

Sincerely,

Jon Logan

## Selecting a Crystal

At the core of the OFP is a mobius coil with a quartz core. Selecting a suitable piece of quartz is the first step. The mass of the quartz is more important than the quality. That is not to say that the quality of the crystal is unimportant, rather that a large enough crystal of relatively poor quality will work much better than a beautiful water-clear crystal which is too small.

If you are a person who already uses crystals because of their bioenergy properties, then you can select one that you like. If you are not familiar with the use of quartz as a bioenergy lens, then it does not matter that you have any special crystal. It matters that the crystal you use be about **4.5 cubic inches** in volume or more. I generally use crystals between 6 and 12 cubic inches in volume. Cracks, inclusions, chips and so forth in the crystal will not stop it from working. In short, the better the crystal quality, the more efficiently the quartz core will work. But any quartz will work, and it is important that it the crystal be large enough. If you are going to go to all the trouble of making this device, you may as well use a big enough piece of quartz or you will be wasting the effort.



The crystal can have one point or two points. It does not have to be perfectly shaped or symmetrical. You could also use a cut prism, cylinder or obelisk of quartz. You could also use Smoky Quartz, Amethyst, Rose Quartz or Citrine, since all of these minerals are basically quartz with a very small amount of metal included in the crystal structure. The metal changes the color of the quartz to give it a yellow, brown, red or purple color.

Most people are able to find natural quartz crystal for sale either on the internet or through the mail. I generally use medium quality, double-terminated clear quartz crystals which measure about 4 inches x 2 inches x 1.5 inches. The design depends on there being a mass of quartz of sufficient volume (4.5 cubic inches or more) inside the coil. So if you are not a "crystal person" then don't worry about it, we are working with physics here (meta-physics, that is) and not with any individual persons belief system. Just get your hands on a chunk of quartz that is big enough, and it will work.

You can get quality crystals from  
<http://www.thecrystalman.com/index.htm>

And more quartz vendors are listed on this page:  
<http://www.littlemountainmudge.com/links.htm>

## Supplement

*If for some reason you are unable to find the required quartz crystal, you could use the white variety of landscaping quartz known as “quartzite”, but since it is of lower quality than the clear quartz crystals, you should use a mass of at least ten cubic inches if you elect to use Quartzite.*



*Another less efficient but workable method of getting the required crystal mass is to take powdered quartz and mix it with just enough plastic casting resin to hold it together. Use polyester (fiberglass) resin or acrylic (craft) resin.*

*Cast it in the shape of a simple cylinder, and make it about 10 cubic inches in volume or more. It will not work as well as a nice quartz crystal, but it will work.*

*You can get landscaping quartz (white rocks for putting in your garden) from the hardware store. You can get sandblasting quartz grit (available where welding or auto body supplies are sold) and reduce it to a powder. You can reduce either one of these products to a fine powder with a setup like in the picture above. Wear a dust mask, goggles and gloves, because quartz slivers are very sharp, just like glass.*

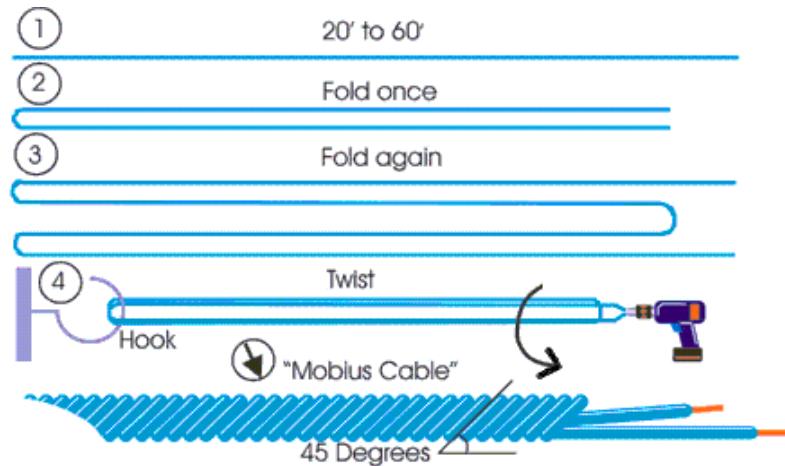
*You could use a length of PVC plastic pipe as the mold to make your own “reconstituted” quartz. Use piece of 2 inch diameter pipe about 5 inches long. Brush the inside of the pipe with vegetable oil or petroleum jelly for a mold release agent. Get some tape and cover one end of the pipe. Mix the resin and catalyst and then mix in the crystal powder until the mixture is thick like oatmeal. Stand the pipe on the closed end and pour the mixture into the open end. Shake it to release air bubbles. If at all possible, expose the mixture to sunlight or bright moonlight while the plastic resin is setting up. It will most likely come out opaque and either a milky white or a pastel color derived from the color of the plastic resin. If you are going to use this method, it may be worthwhile to use acrylic resin instead of polyester, but either will work.*

*This method of making a “faux crystal” from quartz powder will work, but not as well as an actual crystal, and it really is better to use even a low quality chunk of actual quartz crystal if at all possible.*

## Making the Mobius Coil

Once you have selected the crystal you are going to use, the next thing to do is make a Mobius Coil to fit it.

**First - Make yourself a "mobius Cable"** to wind the coil from. While you can wind a mobius coil from single strands of wire, it certainly seems to be a lot more potent when you use a cable made in the manner described here to wind the coil from. Take a length of wire, and double it back on itself twice as shown to the right. Pull a little slack out at the ends of the wire; this will be the leads of the coil when it is finished.



You should leave yourself at least 6" for leads; you can always trim the leads to the required length when the coil is finished. It is much easier to use a drill to twist the wires than doing it by hand. I generally run the drill in reverse to twist the cable. For making the OFP, I recommend using the solid copper wire with lacquer insulation commonly called "magnet wire" in North America. It is called this because they use it to make electromagnets, not because it is magnetic. If you can't get this kind of wire, then use any wire between 20 and 14 AWG. Myself, I generally use #18 AWG copper wire with inverter-duty lacquer insulation. If you are using wire that is not solid but rather composed of many filaments, then be more careful when you twist it, especially if it is # 20 AWG or smaller. In my opinion, solid copper wire is much better but any wire that is insulated will work. Also, it does not have to come out so the spiral is exactly 45 degrees, but get it as close as you can.

Not shown in the picture above is how to fit the cable end into the drill. Before inserting the cable end into the drill to twist it, fold the leads back so that they point towards the end of the cable opposite the end with the leads. Then wrap a few turns of electrical tape around the wires to protect them from the drill. Use about 5 or 6 turns of electrical tape. This provides a cushion so that when you tighten the drill chuck on the wires, it will not scrape off the insulation. While working with the coil in this and subsequent steps to building the OFP, be careful not to scrape the insulation off the wires, or the coil will short out and not work.

While you are twisting the cable, keep just enough tension on it to keep it from bunching up. Don't pull too hard on the wire as you twist it, or you will get knots. If you break the wires by twisting it too tightly, start over again, don't try to repair it. Fortunately, wire is something that is not terribly expensive in most countries. For those of you in industrialized nations, you can generally purchase magnet wire as described above from electrical supply contractors, or the shops where they repair large electric motors. Most major cities have a shop that does electrical coil windings for large motors, and they will often spool you off a few pounds for your "hobby project". Otherwise, go to radio shack and get what wire they have. You need about 30 feet of # 18 AWG to make a coil of appropriate size for the OFP.

**Mobius Coil Winding** - Series Quadrifilar Cable with Helical Twist / Toroidal Coil Winding.

1. - Starting with the end of the mobius cable which does not have the leads, make a loop in the clockwise direction just a little larger than the size you want the hole in the center of your finished coil to be.



2. - When you complete the first wrap, feed the wire through the center of the circle so it wraps around itself in the clockwise direction as shown. Use a little glue (hot melt glue works well for this because it sets up in minutes) to hold the wire in place where it crosses over itself. It should be glue that is flexible when dry. Put the glue right where the little black arrow is pointing, in the picture below.



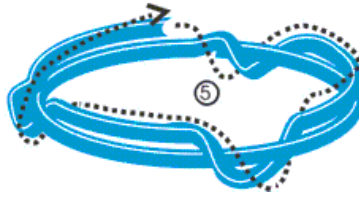
3. - Resume winding the wire around the circle in the clockwise direction again.



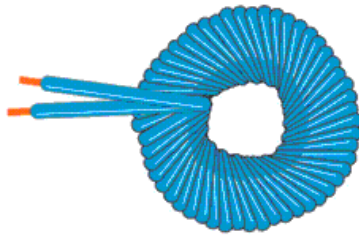
4. - Go around the circle about one third of the way, and feed the cable around the center again, just like in step 3. Go around the circle another third of the way, and do the same thing again. You should have 3 wraps through the center of the coil for each time you go around the circle formed by the coil. Try to keep it neat and even, but don't worry if it doesn't come out a perfect circle. If you get the spacing of these first 3 nodes even, then the coil will come out more even. Try to get the 3 nodes to form an equilateral triangle.



5. - Continue this way, repeating step 4, until you have used up all of the cable. As shown, stay on the same side of the previous wrap with each new revolution. The 'knots' will run together.



**When you are finished, use a little glue to hold the end of the cable in place. The coil should look like this when you are finished.**



Hopefully, the pictures will be of more use to you than the words, as it is really quite simple to do, just a little cumbersome to try and explain in words. Basically, you just keep looping the cable through the center as you go around the circle. With a little practice, you will find that the windings form a pattern, and if you make a mistake it will be obvious as it does not fit the pattern. You should measure the diameter of the crystal you wish to use, and start with a circle about 15% larger than the diameter of the crystal. It is also a good idea to make a coil for practice before you make the one you will use in the pulser. It does not have to look pretty; it has to be a big knot of wire which is all twisted up in a spiral pattern. That way, the entire length of wire is continually crossing over itself at roughly 90 degrees. The wraps on one side of the cable cross over the wraps on the other side of the cable at 90 degrees. This is what causes it to generate scalar wave patterns when you put an electric current through it.



## Mounting the Coil

Well, now you should have a crystal and a coil. The next thing to do is mount the coil on the crystal. Test fit it first. If you find that the coil is too tight for the crystal, then make another coil a little bit larger, or unwind the coil and rewind it a little larger. Do not try to force the coil onto the crystal, or you will scratch off the insulation and have to start over again anyway. The coil can be a little too large for the crystal and it will not hurt anything.



You should arrange it so that the coil sits about one third of the way along the length of the crystal. Instead of placing the coil at the center of the length of the crystal, place it about one third of the way along the length of the crystal. Put it closest to the end without a point if you are using a single terminate crystal, or closest to the end which you have decided will be the “bottom” if you are using a double terminated crystal. In any case, the crystal has to go through the hole in the center of the coil. Once you have a good fit, fasten the coil securely in place with good glue.



You can use either hot melt glue (the heavy duty kind is best, the kind that is yellow and not white) or silicone glue, or vinyl glue like “Goop®” or “Shoe Goo®” brands. For this part I usually use heavy duty hot melt glue with a glue gun. The advantage to using hot melt glue is that it sets up very quickly, and you don’t have to wait hours or days for it to set up. With silicone or vinyl glue, Support the work in place so it cannot move, apply the glue, and let it sit for at least twenty four hours before continuing the work. A simple way to hold the coil in place, if you wish, is to tack it with hot melt glue (even the cheap white kind) and then apply silicone or vinyl glue over the hot melt glue. This produces a durable and flexible joint. For people who live in extremely hot climates, I would suggest this as hot melt glue may soften up and release if it gets too hot. This is not so much a problem with the high-temperature, heavy duty hot melt glue as it is with the low-temperature “econo” or “regular” grade of hot melt glue.



Once you have mounted the coil on the crystal, now you are ready to add the color filter. This is an optional step, but part of the way I do it and therefore part of these plans. What we are doing here is simply “coloring” the energy that will come out of the quartz with the energy signature of another mineral. I



generally use kyanite for this. You could use other minerals, or you could leave it out entirely. Three small slivers of kyanite are attached to one side of the coil, usually the ‘bottom side’ but either side can be used. The three slivers of kyanite are arranged so that they form a triangle. They go right where the crystal meets the coil. Since a quartz crystal has 6 sides, just put one sliver of kyanite on every other side of the crystal. Fasten them in place with a little glue. Wind the coil leads up so they won’t get in your way. *(above pic from a different project but shows kyanite)*

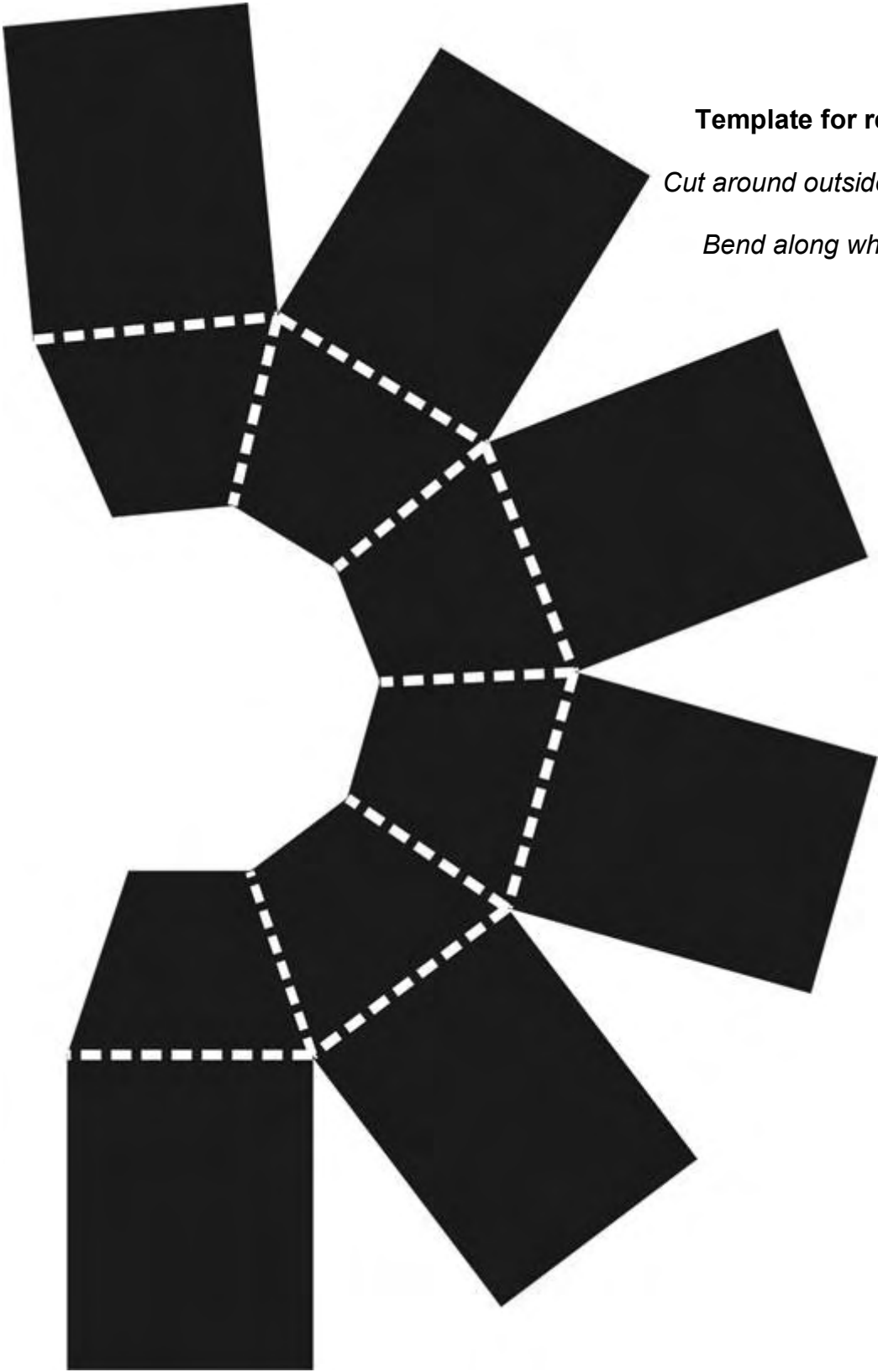
### The Reflector

The next step is to make the reflector. This is basically a metal container that goes around the outside of the coil and crystal assembly. There are several different workable methods of procuring a suitable reflector. On the next page, there is a graphic that can be printed off and used as a template to cut the reflector with metal shears (“tin snips”) from thin aluminum flashing. You can find this thin aluminum flashing at most hardware stores. If you have it, you can also use steel or galvanized steel or thin copper. Generally, aluminum is more easily found and economical, and it more than suffices.



Resize the graphic if necessary, print it out on a sheet of paper, and cut around the outside edges of the black shape. Lay the paper template down on the aluminum flashing, working on a smooth firm surface. Hold the template firmly in place or secure it with a little tape.

Trace around the outside edges to mark the outline on the metal. If you print it out on thick card stock, then you can use a scribe or a sharp nail to scratch the outline into the flashing. Otherwise, print it out on regular paper and carefully trace the outline onto the flashing with an HB pencil or a thin point felt pen. Once you have the outline transferred to the aluminum flashing, carefully cut it out with the metal shears.



**Template for reflector**

*Cut around outside edges*

*Bend along white lines*

## Supplement

*Although the plans here depict a reflector made from the template provided, you could alternately use the optical reflector from a large flashlight, if you can find one at least 3 inches in diameter. If you are unable to find the aluminum flashing and the shears to cut it, then you could substitute a small food can like those generally used for canned tuna. These cans measure roughly 1.5 inches x 3.5 inches and are easily found almost anywhere. You would need to cut a hole about 1 inch diameter, centered in the bottom of the can. Alternately, you could cut the top off a plastic pop bottle and coat the outside of the pop bottle top with aluminum tape or metal spray paint. It is more important that the coil be surrounded with a covering of metal than that the metal covering be of any particular shape.*



Bend along the white dotted lines to form the metal cutout into the shape shown in the picture. You will wind up with a hexagonal reflector with a small hole at the narrow end. Bend the tabs around the outside of the metal cutout up, so that they form sides for the reflector. Do the best that you can to get it neat, but again what matters here is that you have a metal enclosure for the coil and crystal. It does not have to be pretty. The enclosure should have a

small hole at the end where the “bottom” of the crystal goes, and a wider opening at the end with the “top” of the crystal.

Now you are ready to mount the coil inside the reflector. Adjust the reflector so that it best fits the crystal and coil. Do not worry if the edges of all the tabs do not meet, you are going to wrap it with aluminum tape so that there will be an unbroken metal covering around the outside of the whole crystal and coil assembly.

Once you have the reflector arranged to fit the coil and crystal, tack it in place with a little hot melt glue. Tack each of the six flat inner sides of the reflector to the coil. Do them one at a time, and as you do them, hold each one in place so that it lines up reasonably well. Do your best to get the axis of the crystal centered within the axis of the reflector.



Cut about an inch of plastic tubing. Slide the coil leads through it, so that it forms a sleeve around the coil leads. Feed the ends of the leads through the tubing. Slide the tubing all the way up the leads until it butts against the coil. This is to protect the coil leads where they pass between the sharp edges of the metal reflector. You will have one seam on the reflector that joins the whole thing together. On this seam, at the

base of the reflector meet the side of the reflector, bend the sharp edges of the metal back a little so that they cannot scrape the insulation off the coil leads. Fit the coil leads, inside their protective sleeve of plastic tubing, into this opening. Secure both the coil leads and the seam on the reflector with a little aluminum tape.

By this point you should have the coil tacked in place within the reflector. Now wrap the outside of the reflector with at least 2 layers of aluminum tape. Leave just a little of the metal flashing exposed at the "bottom" of the reflector, and cover the rest of the outside surface of the reflector with aluminum tape. Line the edges and seams of the reflector up as best you can while you are doing this. Make sure that all the seams are covered with at least 2 layers of aluminum tape.



### **Supplement**

*If you cannot find aluminum auto body tape, then use first a layer of masking tape to hold the metal flashing in the correct shape, and then a double layer of aluminum foil over the masking tape. Then wrap on another good layer of masking tape to hold the aluminum foil in place. It really is better to use aluminum tape or another metallic tape. In industrialized nations, you can generally find aluminum auto body repair tape in large hardware stores or in painter's supply stores.*

<http://doityourself.com/>

Now set the reflector in a jar or cup to hold it vertical, so that the exposed end of the crystal points upward. Use either heavy duty hot melt glue, silicone glue or vinyl glue to fix the coil and reflector permanently together. Use a generous amount of glue, because you don't want it to fall out later on. If it does, you will be unable to get at it to fix it, and the whole project will be a waste. Ask me how I know that ;) I generally use "high temperature" aka "heavy duty" hot melt glue, and I use about 2 ½ to 3 sticks of glue for each coil / reflector assembly. Whatever glue is used, cover the entire side of the coil that you can see when looking down into the reflector. Make sure that the glue is firmly worked into the crevices of the coil, and touches both the sides of the crystal and the inner sides of the reflector. Use a layer of glue a good ¼ inch thick. Set the reflector assembly aside for the moment and let the glue dry.

### Output Expansion Chamber

This step is to make a chamber that adjoins and extends the reflector assembly. It is simply a hollow tube with an organic outer layer and a metallic inner layer.

Get some clean, dry corrugated cardboard without any printing or markings of any kind. Select a section of the cardboard that has not been crushed so that it will have enough structural strength. Cover one side of the corrugated cardboard with aluminum tape. Work the tape firmly onto the cardboard with your fingertips or the rounded bottom of a soup spoon. Do not scratch holes in the covering of aluminum. If you make a hole, cover it with another piece of tape. You can use one neat layer or two less-than-neat layers of aluminum tape.



You are going to cut a strip from this laminate sheet. Normally, the strip can be about 3 inches wide. If you used an extremely large crystal, you may have to make the strip wider.



**Double check by making the following measurements:** go back to the reflector assembly and measure the distance from the exposed tip of the crystal to the surface of the glue covering the coil.

The strip should be at least 2 inches wide. Additionally, the width of the strip must be at least  $\frac{1}{4}$  inch greater than the distance from the crystal tip to the surface of the glue. Now measure the circumference (around the outside) of the reflector assembly, and make the strip a little longer than the circumference of the reflector assembly. It has to form a tube that will be inserted in the exposed open end of the reflector. The end has to reach just past the crystal tip.

Neatly cut a strip from the cardboard / aluminum laminate with a utility knife. Make sure to cut the strip so that the ribs in the corrugated cardboard run across (the short way) the strip and not along (the long way) the length of it. When you look at one of the long edges of the strip, you should see the wavy line formed by the corrugations. If you cut it with the ribs running the wrong way, then you will not be able to neatly crease it into a tube. Take the time to make the edges of the strip parallel and the ends square. Use a straight edge to run the utility knife along as you make the cut.

Roll the strip into a tube around a suitable cylindrical form such as small jar or tin can. The cap from a spray paint can is about the right size for a normal crystal. Start at one end of the strip and press firmly against the form as you roll. Put the metallic side inwards so that it will form the inner surface of the tube. Once you have the strip creased into the shape of a tube, insert the tube into the open end of the reflector assembly. It does not have to be perfectly cylindrical, or perfectly round. A little overlap at the ends of the tube is necessary so that you can fasten them together. The sides of the tube should be as close to parallel with each other as you can get them. The sides of the tube should be as close to parallel with the axis of the crystal (not the reflector) as you can get them.

Even if you just mash it into place, it will still work, but it is worth the time to work the cardboard gently into place and get it all lined up nicely. If the end of the strip does not come out square and level, then don't worry you can trim it later with a utility knife or scissors. Make the sides parallel. Tack the tube in place with hot melt glue. Tack the tube to each of the six flat inner sides of the reflector assembly, one at a time. Line each connection point up as best you can before you tack it, and hold it in place while the hot melt glue cools.



Once the tube is tacked in place, let it cool for a few minutes and then fasten it in place permanently with glue. Fill all the holes at the inside corners of the reflector and glue all the way around the seam where the reflector meets the tube. Fill the seam where the two ends of the strip overlap with glue to form a seal. You need

not only to hold the tube firmly in place, but also to form a liquid-tight seal on all the outside surface of the assembly you are building.

### **Supplement**

*You could use several methods to form an output expansion chamber, but it should have an organic outer layer with a thin metallic inner layer. You could use a section of PVC water pipe if you painted the inside with metallic paint. You could form the tube from metal flashing and cover the outside with several coats of latex paint. The corrugated cardboard method works well and it is still the way I generally do it. Once you have everything all glued in place, double check the surface of the reflector. Make sure that the tape is worked firmly into place, and that there are no holes in the covering of tape. Soon it will be immersed in liquid.*

**Well, there you have a sample of the content you can expect to find in this document.**

**To purchase the full version of this document (59 pages) , visit**

**[This page](#)**

( <http://www.eBookAd.com/eb.php3?ebookid=21413&partner=12002> )



**Sincerely, Jon Logan**

**©2004-2005 Jon Logan, all rights reserved**



**Wizzers Desk** Personal Bioenergy Tools - Orgone Matrix Material Ergonite Orgonite Organite  
- Construction info & sales- Radionics Stations -Möbius Coils - EM Pollution Control - DIY Plans & More!  
- [Site Map](#) / [Products](#) / [Info](#) / [Ebooks](#) / [Contact](#) / [Legal](#) / [Links](#) / [Orgonite](#) / [Radionics](#)



**[Modern Orgone Quarterly magazine in PDF format.](#)**