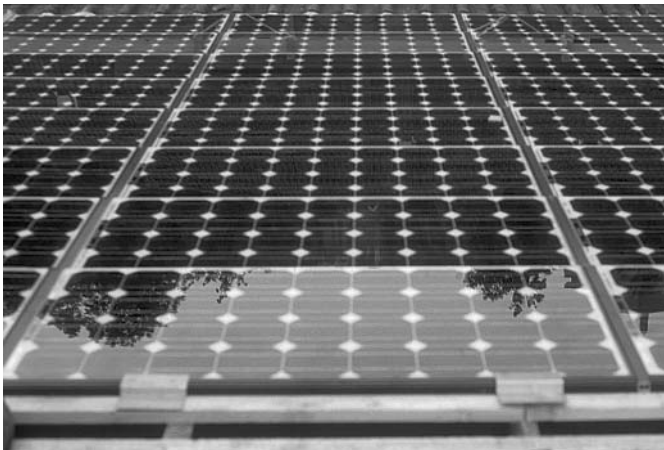




**Figure 22.34** Alutec profile system in a new roof in Langedijk HAL (NL). Capacity of the system is 53 kWp and the project is part of the 5 MW BIPV project. Reproduced with permission by BEAR Architecten M. van Kerckhoven



**Figure 22.35** Solrif Solar profile system in a roof renovation in Zürich (CH). Capacity of the system is 53 kWp. Reproduced with permission by BEAR Architecten T. Reijenga

- a separate mounting construction is not necessary, and
- the air-conditioning system is eliminated.

### 22.3.2 Cells and Modules

The PV modules and mounting system are the elements of a PV system that can determine the image of a building. A PV system, particularly the cell material, framing materials, soldering, shape of the modules and the color of cells and back sheets, all influence the image of a building. For architects and designers, these aspects are more important than