

Men-at-Arms

OSPREY  
PUBLISHING

# Early Roman Armies



N Sekunda & S Northwood • Illustrated by Richard Hook

First published in Great Britain in 1995 by  
Osprey Publishing, Elms Court, Chapel Way, Botley,  
Oxford OX2 9LP, United Kingdom.  
Email: [info@ospreypublishing.com](mailto:info@ospreypublishing.com)

© 1995 Osprey Publishing Ltd  
Reprinted 1997, 1999, 2001  
Series Editor: MARTIN WINDROW

All rights reserved. Apart from any fair dealing for the purpose of private study, research, criticism or review, as permitted under the Copyright Designs and Patents Act, 1988, no part of this publication may be reproduced, stored in a retrieval system, or transmitted in any form or by any means, electronic, electrical, chemical, mechanical, optical, photocopying, recording or otherwise, without the prior permission of the copyright owner. Enquiries should be addressed to the Publishers.

ISBN 1 85532 513 6

Filmset in Great Britain  
Printed in China through World Print Ltd.

FOR A CATALOGUE OF ALL BOOKS PUBLISHED BY  
OSPREY MILITARY AND AVIATION PLEASE CONTACT:

The Marketing Manager, Osprey Direct UK,  
PO Box 140, Wellingborough, Northants,  
NN8 4ZA, United Kingdom.  
Email: [info@ospreydirect.co.uk](mailto:info@ospreydirect.co.uk)

The Marketing Manager, Osprey Direct USA,  
c/o Motorbooks International, PO Box 1, Osceola,  
WI 54020-0001, USA.  
Email: [info@ospreydirectusa.com](mailto:info@ospreydirectusa.com)

[www.ospreypublishing.com](http://www.ospreypublishing.com)

### Acknowledgments

The authors would like to thank Dr. J. Briscoe and Mr. T.J. Quinn for their help in the writing of this book. They would also like to express a debt of gratitude to Peter Connolly, whose book *Greece and Rome at War*, which constituted the first attempt to integrate the historical and archaeological evidence dealing with the army of Archaic Rome, has been a constant source of reference.

### Artist's note

Readers may care to note that the original paintings from which the colour plates in this book were prepared are available for private sale. All reproduction copyright whatsoever is retained by the Publishers. All enquiries should be addressed to:

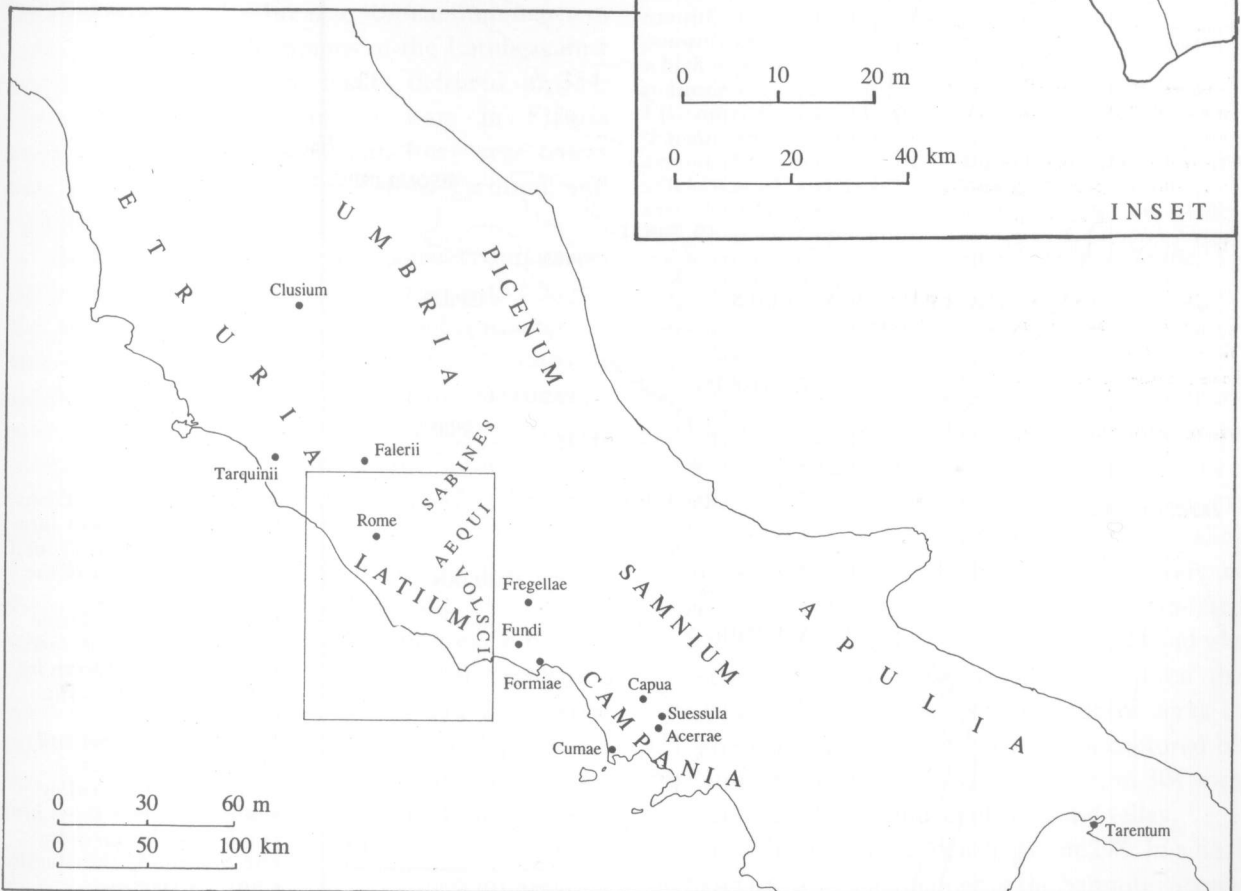
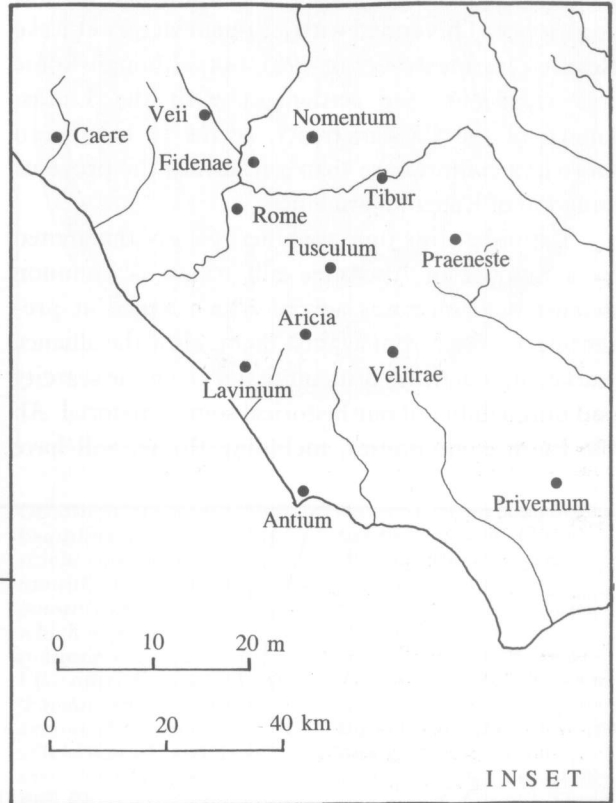
Scorpio Gallery  
PO Box 475  
Hailsham  
E. Sussex BN27 2SL

The Publishers regret that they can enter into no correspondence upon this matter.

# EARLY ROMAN ARMIES

## ROME'S EARLY HISTORY

Early Rome and the Romans were only one of a number of peoples and settlements in Iron Age Italy. From the earliest historical times Rome fell under the influence of her powerful Etruscan neighbours to the north, and, indeed, throughout most of the sixth century BC Rome was ruled by kings, the Tarquins, who came originally from the Etruscan city of Tarquinii. In 509 (according to later Roman tradition) the last of these Etruscan kings, Tarquinius Superbus, was expelled. Rome declared herself a Republic, and was governed by two annually elected magistrates known as 'consuls'. For a while, how-

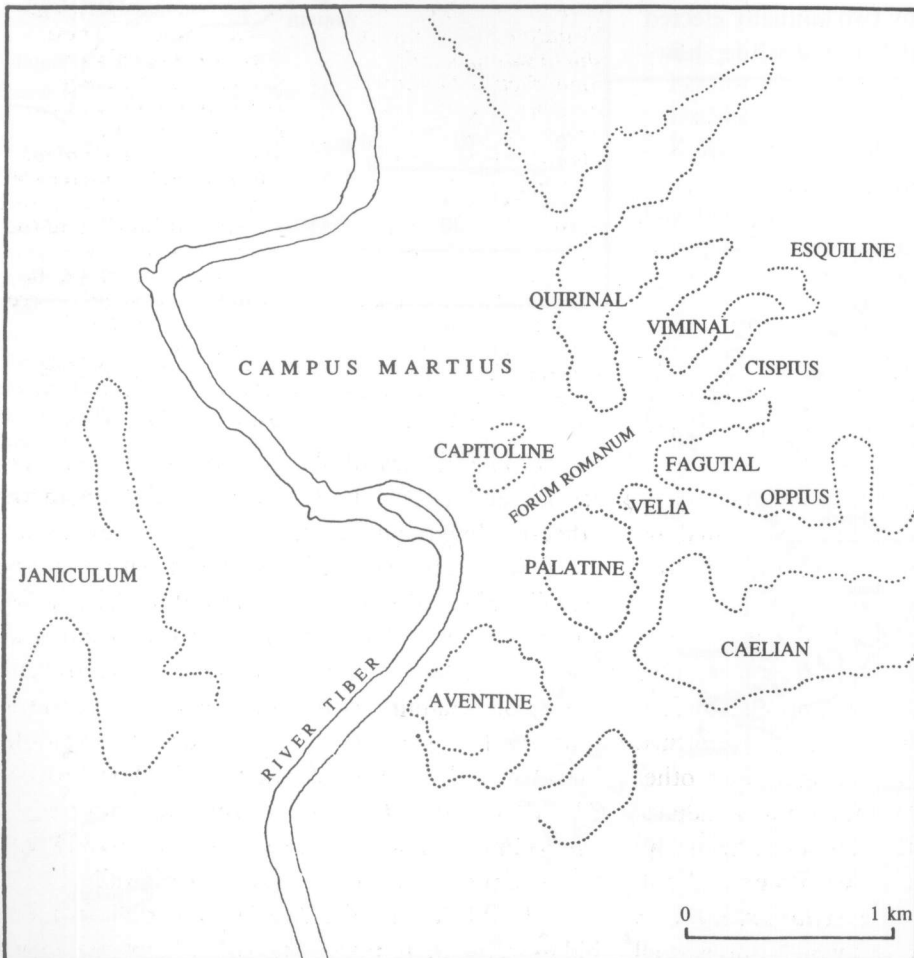


ever, Rome fell under the control of Lars Porsenna of Clusium. Porsenna was defeated at Aricia in c. 504 by an alliance between Rome, other Latin peoples and Aristodemus of Cumae. However, Rome was left in a weakened position and the Latins refused to accept Roman hegemony instead embarking on a war against her. This ended with a Roman victory at Lake Regillus (variously 499 or 496), but, although Rome was victorious, the settlement with the Latins, known as the Cassian treaty, seems to have been more of a compromise than a return to the previous situation of Roman dominance.

Latium at this time was increasingly threatened by a number of Apennine hill tribes. A common defensive alliance was agreed which aimed at presenting a united front against them. How the alliance worked in practice is difficult to tell given the scarcity and unreliability of our historical source material. All the Latin communities, including Rome, will have

provided troops, but who commanded them? One literary fragment from the first century BC Roman antiquarian Cincius implies an annual command rotating between the various members of the alliance. Much of the fifth century BC saw Rome at war alongside the Latins defending Latium against the Sabines, Volsci and Aequi who were eager to settle in more fertile territory. In this endeavour the alliance seems to have been largely successful and in the later part of the century former territorial losses were being recovered.

Not all Roman warfare was organized as part of the Latin alliance. The security of Rome's northern border was essentially her own responsibility, and this involved protection against the closest Etruscan city, Veii, which was situated twelve miles north-east of Rome on the opposite bank of the Tiber. Rome was at war with Veii in 483-474 (during which time there occurred a famous Roman defeat at the battle of



*At Rome the River Tiber has cut a deep valley into the local tufa rock about a mile across. Some of the hills of Rome, the Capitoline, the Palatine and Aventine, lie in this valley separated from its sides, while others, the Caelian, Oppian, Esquiline, Viminal and Quirinal, are spurs connected to the valley sides. The Tiber flows in two loops, the northern one containing the marshy Campus Martius.*

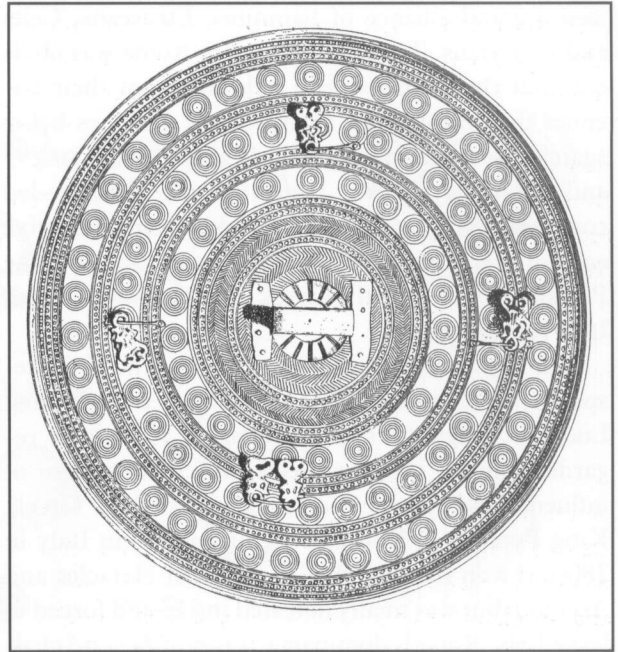
Cremera). Conflict began again intermittently in the 430s until the Veientine satellite colony of Fidenae was destroyed in 426. The most important conflict with Veii, however, began in 406 and lasted for ten years, at the end of which Veii was conquered by the Roman general Camillus. Veii was destroyed and her territory seized. This was a most significant development since it was the first time Rome had destroyed and occupied an enemy state of comparable size.

Rome's expansion was temporarily halted by the Gallic incursion of Brennus, during which the city of Rome was sacked following a crushing defeat at the Allia (traditional date 390 BC). Rome's long term position seems not to have been unduly damaged, however. Indeed an extended period of aggression, which had begun with the war against Veii, continued with the recapture of the Pomptine district of Latium from the Volsci and the annexation of the nearby Latin community of Tusculum in 381.

Rome's next major wars were undertaken against the Latin towns of Tibur and Praeneste. These had never been part of the Latin League allied to Rome, but they now posed a threat to Roman dominance in Latium, perhaps as champions of the Latins against Rome. Both towns were finally defeated in 354. Shortly afterwards concurrent wars in Etruria reached a successful conclusion: forty year truces were granted to Caere in 353 and to Tarquinii and Falerii in 351.

Rome now had no serious challenger in Latium and possessed a secure northern border with Etruria. Her next entanglements were to draw her into operations in new theatres. In 343 the peoples of Campania appealed to Rome for help against the Samnites, a powerful group of tribes who inhabited the central southern highlands of Italy. Rome intervened on behalf of the Campanians and the conflict was concluded in 341.

That same year the Latins finally rebelled against Rome and united themselves with the Volsci. This was a serious rebellion but it was suppressed by 338, in which year the Romans fundamentally reformed their relationship with the Latins and their other allies. Many communities lost their independence and became *municipia* with Roman citizenship; others negotiated new treaties with Rome and still others received a new status (the *civitas sine suffragio* or 'citizenship without the vote') which imposed all



*Ornamental shield from Esquiline Tomb 94. This shield was probably manufactured in Etruria, possibly in Tarquinia which was a major manufacturing centre. Like other Etruscan 'Parade-Shields' of this period, the Esquiline shield was of extremely thin sheet bronze, decorated with repoussé ornamentation. Consequently it has survived only in an extremely fragmentary condition, and so a*

*reconstruction drawing has been shown. These 'Parade-Shields' were presumably funerary versions of more robust shields which were actually used in combat. The original diameter was something like 61 cm. Note the central handle and the four or five terminals attached by staples to the inside of the shield. These may have been for the attachment of straps which would enable the shield to be worn on the back when not in use.*

the responsibilities of Roman citizenship (military service and payment of taxes) but did not allow office-holding or participation in elections at Rome.

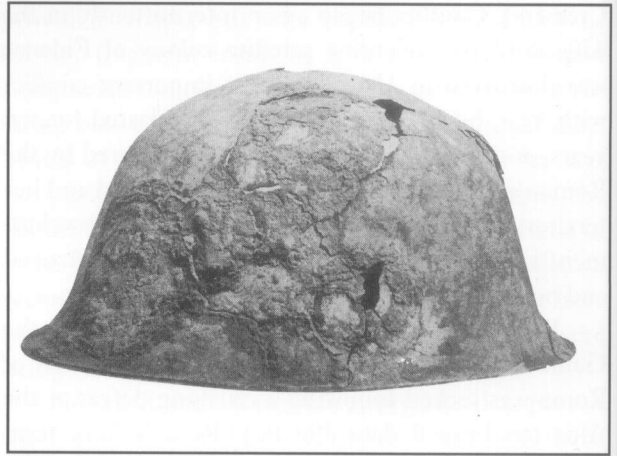
Having thus strengthened her position, Rome established colonies in Campania and the Liris valley and in 326 entered into an alliance with Neapolis: all moves which angered the Samnites and precipitated the Second Samnite War. This began in 326 and was pursued for over twenty years, despite even the humiliating Roman defeat at the Caudine forks in 321 where a double consular army was captured by the Samnites. The war ended, however, in 304 with the Samnites ceding control of the Liris valley.

The Third Samnite War began in 298. In a final bid to secure their independence the Samnites organ-

ized a grand alliance of Samnites, Etruscans, Celts and Umbrians. The seriousness for Rome was obvious, but the Romans were able to defeat their enemies piecemeal, their most notable victories being against the Samnites and Gauls at Sentinum in 295 and Apulonia in 293. Defeat of the Samnite-led coalition, completed in 290, gave Rome effective control over all the native Italian peoples south of the Po valley. Now only the Greek coastal cities of South Italy remained free.

In 282 Rome sent a garrison to Thurii in response to a request for aid against her marauding Lucanian neighbours. The people of Tarantum regarded this as interference within their sphere of influence and appealed for aid to their fellow Greek, King Pyrrhus of Epirus. Pyrrhus landed in Italy in 280 and won two 'Pyrrhic' victories at Heraclea and Asculum but was finally defeated in 275 and forced to leave Italy. Rome's dominance was now beyond challenge.

For most of this period the literary sources at our disposal are of lamentable quality. Our principal sources are Livy and Dionysius of Halicarnassus, who both worked at Rome during the reign of the Emperor Augustus (31 BC–AD 14). In fact the ancient accounts of the history of Rome only become truly reliable when Pyrrhus comes onto the scene. The campaigns of Pyrrhus were described by earlier Greek historians, some of whom, like Pyrrhus' court historian Proxenos, and indeed Pyrrhus himself,



actually witnessed the events described. Thus the descriptions of the Roman army contained in surviving accounts of the war with Pyrrhus can be regarded as reliable. All information concerning the Roman army in particular, and Roman history in general, before this date is unreliable.

Rome only started to produce her own native historians towards the end of the third century. These are known to modern historians as the 'annalists'. The only reliable information they had available to draw on for the early history of Rome were lists of magistrates and treaties of alliance, otherwise they had to use mythology and oral tradition. Livy and Dionysius relied heavily on the 'annalists' and thus, though their works are unreliable as a whole, they occasionally contain 'nuggets' of information which seem to reflect accurate and genuine tradition. The task of the modern military historian is to sift out these nuggets from the slurry wherein they float. Needless to say, there is little which can be written on this period with absolute certainty.

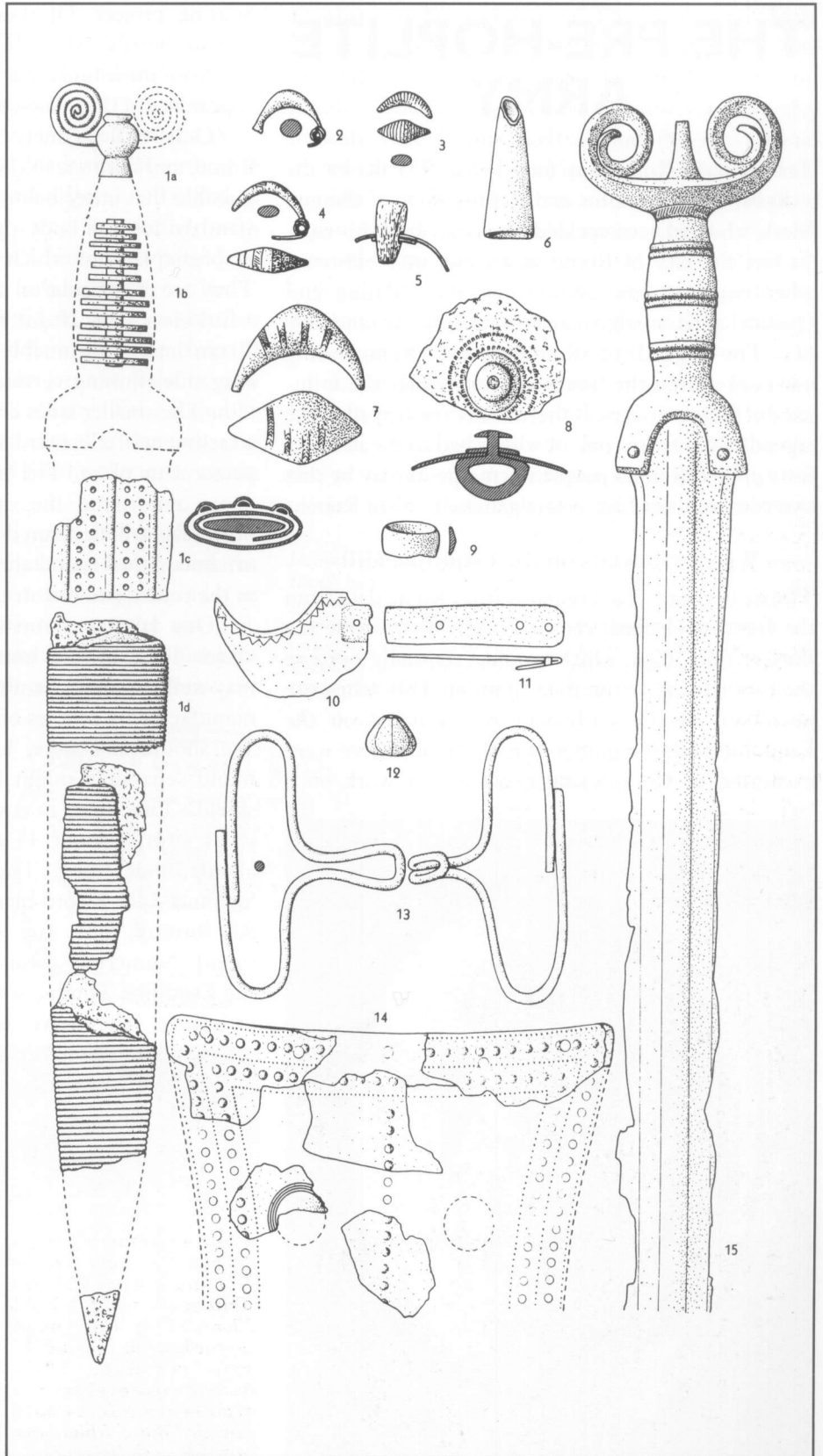
Any study of the Roman army within this period falls naturally into three sections dealing with the pre-hoplite army, the hoplite army, and the manipular army.



*Etruscan statuette of a warrior on a candelabrum from the 'Circolo del Tritone', Vetulonia, now in Florence. The decoration on the back of the shield indicates that the warrior carries a more robust version of the 'Etruscan Parade Shield' which was actually used in combat.*

*The fact that the warrior carries the shield suspended from his shoulders, presumably to allow him to throw his spear, shows that the attachments on the back of the 'Parade Shield' were designed for attachment to straps. He also carries a mace in his left hand.*

Left: This 'Calotte' helmet from Esquiline Tomb 94, now in the Capitoline Museum, has been dated to the first half of the seventh century. This early photograph demonstrates the fragmentary state of the skull: it is possible that the helmet originally had a number of plume and other fittings which were not recovered during excavation.



Findgroup 98 from the Esquiline, from a warrior-burial, excavated in the Via Giovanni Lanza. The short sword (1), found in a fragmentary condition, had an iron blade and a bronze pommel. The scabbard would have been wood, partially faced with an embossed bronze plate at top, and bound with a bronze wire. The bronze butt (6) has survived from the warrior's spear, but the iron spearhead had completely disappeared. The iron disk (8) may have been a boss from a wooden shield, though this is uncertain. The warrior's panoply was completed by a bronze pectoral (14) which also only survived in a fragmentary state. Also shown are brooches (fibulae, 2-4, 7), used to secure the cloak and tunic, a bronze 'razor' or whittling-knife (10-11) and a belt-buckle (13).

# THE PRE-HOPLITE ARMY

Traditionally Rome was founded in 753 BC by the twin brothers Romulus and Remus, sons of the god Mars, who had been suckled in infancy by a she-wolf. In fact the city of Rome first came into existence when separate communities on the Palatine and Quirinal hills amalgamated some time around 600 BC. The legend of Romulus and Remus only emerged during the fourth century under the influence of Greek writers. If there is any truth at all in the legend of the twins, one of whom had to die in order for a unified Roman people to emerge, it may be that two communities had to amalgamate to form Rome.

## Warrior-burials on the Esquiline Hill

The earliest preserved remains from Rome date from the eighth and ninth centuries BC. At this time the huts of the village which would eventually become the Eternal City lay on the Capitoline Hill, while the necropolis of the settlement was situated on the Esquiline Hill. A number of early tombs there were excavated in 1885 during construction work on a



housing project. Of these tombs, some are clearly 'warrior-burials', while others contain assorted weapons. It is from these finds that we can form an image of the appearance of the earliest Roman warriors (*see* Plate A).

Only two helmets have emerged from early Rome, and both are of the 'Calotte' type, though it is possible that other helmet types were used too. The standard form of body-protection was the 'pectoral', or breastplate, of which some three have survived. They are rectangular in shape, with incurving sides, a little less than 20 cm wide and a little more than 20 cm long. Presumably they were worn with the long side running vertically, though this is not certain. The smaller sides are pierced with holes for the attachment of a leather backing and straps to hold the pectoral in place. The precise way in which these straps ran round the shoulders is unknown. The pectorals are decorated with bands of geometric ornamentation round the edge, and five bosses, one in the centre and one in each of the four corners.

One large ornamental bronze shield has survived. This shield is entirely Etruscan in style, and may well have been manufactured in one of the major manufacturing centres of Etruria, such as Tarquinii. We should also note, however, that an iron boss found separately might have come from a wooden shield. Two sizes of sword have been recovered, short swords about 44 cm long, and long swords about 70 cm long. The latter generally have an 'antenna' hilt. Sword blades at this time were generally bronze, but iron examples are occasionally found. Numerous spear-heads have been found in the Esquiline Tombs, sometimes of iron, sometimes of bronze. They have leaf-shaped blades and typically a multi-faceted central section, sometimes decorated with a geometric pattern.



*Roman sardonyx gem showing two bearded Salii priests. (Photo: Staatliche Museen zu Berlin)*



## The Salii

Down to the end of the Republic and well into the Imperial period there existed at Rome two colleges of 'Salii', the priests of Mars. The cult of the *Salii Palatini* was connected with Mars and, according to tradition, with an ancient miraculous shield called an *ancilia*. The *Salii Collini* was connected with Quirinus. Quirinus was the Sabine name for Mars, and was derived from the Sabine word for lance. Consequently we can be confident that two separate colleges of the Salii existed before the coalescence of the two separate communities on the Palatine and Quirinal hills around 600 BC. Many of the Republican institutions of Rome indicate that the early city incorporated both Latin and Sabine elements within its population.

Both colleges of priests were dedicated to the war-god, and many of the martial features of the institution of the Salii suggest that their origin lay in warrior bands bound by oath to serve the war-god. Each of the two colleges consisted of 12 life-members from patrician families, both of whose parents were

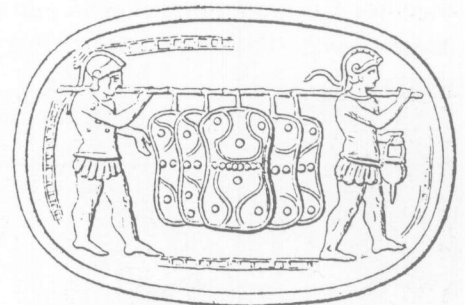
required to be still living. This was presumably initially an injunction of military significance: the head of a family could not be a member of the Salii lest he should lose his life in battle. It may also indicate that at this early period the main social division between plebeian and patrician had military significance: only the patricians were rich enough to provide themselves with weapons, and were therefore able to participate in warfare. At the head of each college was a *magister*. The term *magister* is of military origin, denoting a magistracy or military command in Etruscan inscriptions.

It was a feature of most ancient communities that when new military or political institutions of the citizenry were established, they were placed under the protection of a particular deity. Worship was offered to the deity to ensure the survival and pros-

*Below right: Raymond Bloch has suggested that this cornelian intaglio, present whereabouts unknown, shows two warriors rather than Salii, carrying five ancilia hung*

*on a pole. The first warrior, however, seems to carry an apex in his hand. The seal dates to the fourth or third century BC; note the crested Italo-Attic helmets and muscle-cuirasses.*

*Right and below: Agate intaglio in the Archaeological Museum, Florence, showing two Salian priests moving the ancilia. It is inscribed, in Etruscan though the name is Latin, Appius alce 'Appius gave'.*



perity of that institution. In the course of time it would be necessary to reorganize the citizen body and establish new civic and military institutions. When this happened, however, the original institution frequently continued a shadowy existence as a social 'fossil', obsolete in any meaningful way, but continuing as a religious college which met to maintain the established acts of worship. Failure to maintain the established rites would constitute a sacrilegious act, and would be sure to bring down the wrath of the slighted god onto the community. In the priestly colleges of the Salii we seem to have such a fossil.

Some features of the institution of the Salii may therefore reflect Roman military practices before the

institution of the tribal system. It may be that only young patricians participated in warfare, and only then if they were not heads of families. They formed themselves into warrior-bands, perhaps restricted to twelve men, who dedicated themselves to the worship of Mars in return for that god's support in battle. Needless to say, this is all highly speculative. Similar colleges of Sali were in other Latin cities such as Aricia, Alba, Lavinium, Tusculum, Tibur and Anagnina. So this form of warfare seems to have been general in Latium, and not restricted to Rome.

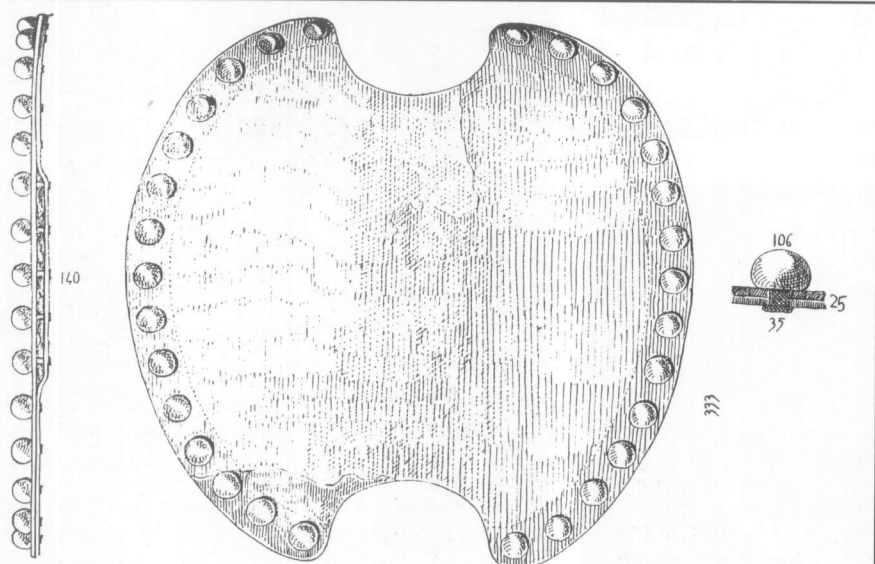
### Salian dress and equipment

The dress and equipment of the Sali are described by Livy, Dionysius of Halicarnassus and Plutarch. They wore a decorated many-coloured tunic, purple according to Plutarch, and what Livy calls 'a bronze covering for the chest'. These breastplates may correspond to the square pectorals recovered from the Esquiline tombs discussed above. Over the tunic was worn a *trabea* cloak described by Dionysius. His words are difficult to interpret, but he seems to say that they were striped in scarlet, bordered in purple and fastened with a brooch. Plutarch adds that they wore bronze belts and helmets and carried short daggers, while Dionysius tells us that they carried short spears or staffs.

The most distinctive item associated with the

Sali was the *ancile*. The *ancile* was an oval shield made of bronze and decorated with relief work on the outside. The sides of these shields were indented. This rough 'figure-of-eight' shape has led to suggestions that the shield may have ultimately derived from Mycenaean prototypes, but the shape is so common in all areas at all times that a local Italian origin is to be preferred. No actual *ancilia* or shields of a comparable shape have survived, but small bronze votive shields of this shape have been recovered in archaeological contexts in Picenum and adjacent regions dating to 700 BC and later. Thus it seems possible to suggest that use of the *ancile* spread across the Apennines into Latium during the seventh century BC prior to the introduction of hoplite equipment and tactics. The actual origin of the *ancile*, as opposed to that in Roman tradition, is obscure. They may originally have been shields routinely used in battle by Roman warriors, or, less probably, booty captured from the enemy at some point in the past.

One further distinctive feature of the Sali was their pointed helmet, called an *apex*. An actual example of a Salian *apex* has been recovered in a late Republican context. It is made in silver, and so does not directly reflect an ancient helmet type, though it probably preserves an approximate representation of the shape of such an early helmet. Perhaps only the side ribs, brow-band and studs were metal in the



DESSIN 3. — TOMBE DU BOUCLIER

French archaeological excavations in the region of Bolsena revealed a warrior tomb, called by the excavator 'Tombe du Bouclier' after this bronze miniature (335×305 mm) shield, slightly oval in shape. The distinctive cut-out sections in the sides led the excavator to identify this type of shield as the ancestor of the *ancilia* later carried by the Sali.



Left: Two denarii, struck by Publius Stolo in 17 BC, show on their reverses the apex and ancilia used by the Salii priests in the late Republic. (Photo: Cabinet des Médailles, Bibliothèque National, Paris)



Right: This aureus shows on the reverse Juno Sospita, the war goddess of the Latin city of Lanuvium, crowning Quintus Cornuficius, clad in a toga. The goddess carries an ancile shield. (Photo: Cabinet des Médailles, Bibliothèque National, Paris)

original apex helmet, while the cap beneath them may have been leather. Perhaps the olive-wood spike at the top of the helmet may be the descendant of a wooden crest-holder.

### The tribal system

The earliest possibly reliable information concerning the size and organization of the earliest Roman army describes how it was recruited from three 'tribes'. Roman society was at some early stage divided into three tribes and thirty *curiae*. The word *curia* is generally derived from *co-viria*, that is, 'an assembly of armed men'. The *curiae* formed the voting units of the earliest Roman assembly, the *comitia curiata*. Each *curia* was formed from a number of families (*gentes*) and ten of these *curiae* formed a tribe (*tribus*). That there were indeed originally three tribes is confirmed by the etymology of *tribus* which was derived from *tris* (the Latin for 'three') and literally meant 'divided into three'. Each tribe appears to have been commanded by a *tribunus militum* and to have contributed 1,000 men (i.e. 100 from each *curia*). This led the Roman antiquarian Varro to speculate that *miles* (the Latin for 'soldier')

The internal handle arrangements of the ancile are unknown. Hellenistic statues of Juno Sospita show handle arrangements similar to those for a hoplite shield, but they may have entered the representational canon under Greek influence, and

perhaps do not represent seventh century reality. The inside of an ancile and an ornamental Salian dagger are shown on this example of a Roman aes grave coin, though such coins have been dismissed as forgeries.



Tradition claims that the tribal system was introduced by Romulus in the eighth century BC. But modern historians are unanimous in concluding that this cannot be the case. The three tribal names (Tities, Ramnes and Luceres) are clearly Etruscan. Consequently the system of three tribes and thirty *curiae* was introduced under the direct influence of the Etruscans, probably towards the end of the seventh century BC. This immediately raises the much larger problem of which method of warfare and equipment was used by the three tribes. It is possible that hoplite tactics and equipment were introduced at Rome at the same time as the tribal system, i.e. a little before 600 BC; but it is more probable that they were introduced some half-century later by Servius Tullius.

## THE HOPLITE ARMY

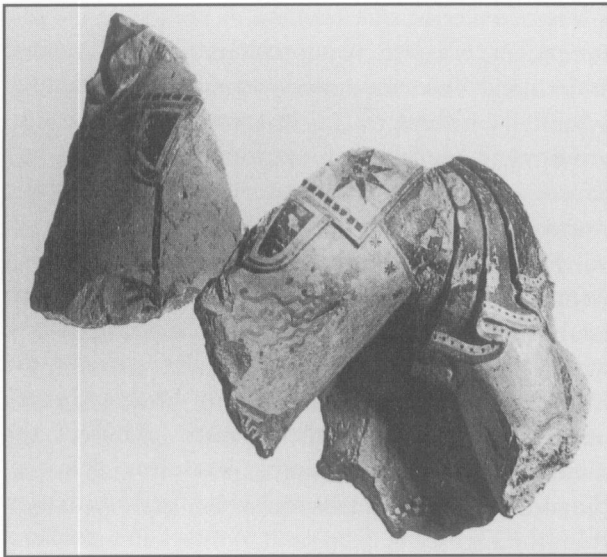
Hoplite tactics were developed in Greece *c.* 675 BC and reached Etruria *c.* 600 BC, where their use is confirmed in a wide variety of contemporary artwork. Dionysius of Halicarnassus reports how the Etruscan

towns of Falerii and Fescennium preserved hoplite equipment, despite being colonized by Romans: 'Falerii and Fescennium were even down to my day inhabited by Romans . . . in these cities there survived many ancient customs which the Greeks had once used, such as their type of weaponry: Argolic shields and spears'.

From Etruria this new form of warfare spread to Rome and to the other Latins. This fact is well established in the ancient tradition: 'In ancient times, when the Romans used rectangular shields, the Etruscans fought in phalanx using bronze shields, but having compelled the Romans to adopt the same equipment they were themselves defeated' (Diodorus). 'The Romans took close battle formation from the Etruscans, who used to attack in a phalanx' (Athenaeus). 'The Etruscans did not fight in maniples but made war on us armed with bronze shields in a phalanx; we were re-armed and adopting the equipment of the enemy we formed up against them; and in this way we were able to conquer even those most accustomed to fighting in phalanx' (*Ineditum Vaticanum*). Even Livy knew this, remarking that before the introduction of military pay the Romans had employed the round shield in a Macedonian style phalanx.

*These two terracottas from Veii, produced at the beginning of the fifth century, show a pair of naked young men engaged in a war-dance. As in ancient Greece, the war dance was a survival of pre-hoplite warfare; its steps were designed to train the young warrior in the moves employed in single combat. One of the dancers carries a hoplite shield, while the other carries a square shield. The appearance of the square shield is difficult to interpret, but perhaps implies that when Rome was using hoplite methods of warfare not all other Latin cities followed suit, which is indicated in some literary sources. Both figurines would originally have had miniature spears in their right hands. (Photo: Museo Nazionale di Villa Giulia, Rome)*





Painted terracotta body of an Amazon, dating to the early years of the fifth century, from the pediment of a temple on the Esquiline. The principal colour is sometimes stated to be black, but reproductions show a dark navy blue. It is by Greek artists, perhaps Damophilus and Gorgasus, known to have

been active in Rome at the same period. Clearly this sculpture is of a mythological subject, even though wearing hoplite equipment, and so cannot be taken as evidence for the adoption of hoplite equipment and even less so for hoplite tactics by the Roman army. (Photo: Soprintendenza Archeologica di Roma)

The introduction of hoplite tactics to Rome is associated in Roman historical tradition with the penultimate king of Rome, Servius Tullius (traditional dates 578–534 BC). Servius was said to have introduced a sweeping reform which changed the prevailing social order divided by *gens* and *curia* which we have already described. The most important innovation was that citizenship by race was replaced by one based on residence, thus perhaps increasing the pool of military manpower. These newly defined citizens were subject to the *census* in which their wealth was assessed, and this in turn provided the basis for an army where the wealthy were bound to serve and to provide their own military equipment. Those obliged to serve armed as hoplites were said to be part of the *classis*; and those who were not sufficiently wealthy (perhaps the majority) were termed *infra classem* and may have served only as light armed troops (see Aulus Gellius, and Festus). That the *classis* was indeed a hoplite formation is confirmed by Festus who comments that

an army, known in his day as an *exercitus*, had in ancient times been called *classis clipeata* (i.e. the *classis* armed with the hoplite shield, *clipeus* being the Latin term for the hoplite shield).

A number of indications make it clear that the Servian political assembly, based on the division *classis: infra classem*, arose from a military reform. In later times the developed form of the citizen assembly still met outside the *pomerium* (the sacred boundary of the city of Rome) on the Campus Martius (a field dedicated to Mars, the Roman god of war); it could only be convened by a magistrate holding *imperium* (the authority required for military command); it was summoned by a trumpet blast (*classicum canere*) with red flags flying on the Janiculum and the Arx when assembled; and the formulae used to summon it included phrases like *exercitum imperare* (to command the army) and *exercitum urbanum convocare* (to summon the urban army). The inclusion of centuries of engineers and musicians also leads to the same conclusion. The fact that this ‘Servian’ system was entirely unsuitable for recruitment of a manipular army confirms its predominantly hoplite character, and it is hardly surprising that in creating this system Servius Tullius is thought to have introduced hoplite tactics to Rome.

### Livy’s account of the reforms

Anyone who reads the full historical accounts of early Rome written by Livy and Dionysius will note that they describe the ‘Servian’ reform somewhat differently from the simple division *classis: infra classem* outlined above. Livy’s account (1.42.5–43.8) runs as follows:

‘The population was divided into classes and centuries and the following arrangement, suitable for both peace and war, was made based upon the census. 1) Of those who had a census rating of 100,000 *asses* or more he made 80 centuries, 40 of seniors and 40 of juniors, all of whom were called the first Class. The seniors were to be ready to guard the city, and the juniors to wage war abroad. The armour which these had to provide consisted of helmet, round shield, greaves, and breast-plate (all of these items made of bronze), to protect the body; their offensive weapons were the spear and the sword. To this class were added two centuries of engineers who served without arms and whose duty was to construct siege

engines in time of war. 2) The Second Class was drawn from those assessed between 75,000 and 100,000 *asses*, and from these 20 centuries (juniors and seniors) were formed. Their prescribed armour was the same as the first Class except for the breast-plate and the rectangular shield in place of the round one. 3) He determined that the census rating of the third class should be 50,000 *asses*; the same number of centuries was made and the same arrangement by ages; nor was there any change in their arms except that greaves were omitted. 4) In the Fourth Class the census rating was 25,000 *asses*; the same number of centuries were formed but their equipment was changed: nothing was given them but a spear and a javelin. 5) The fifth Class was made larger with 30 centuries, and these carried slings with stones for missiles. Among this class were also the horn-blowers and trumpeters who were placed in two centuries. This class was assessed at 11,000 *asses*. 6) The lesser census rating contained all the rest of the population, and of these one century was formed which was exempt from military service.'

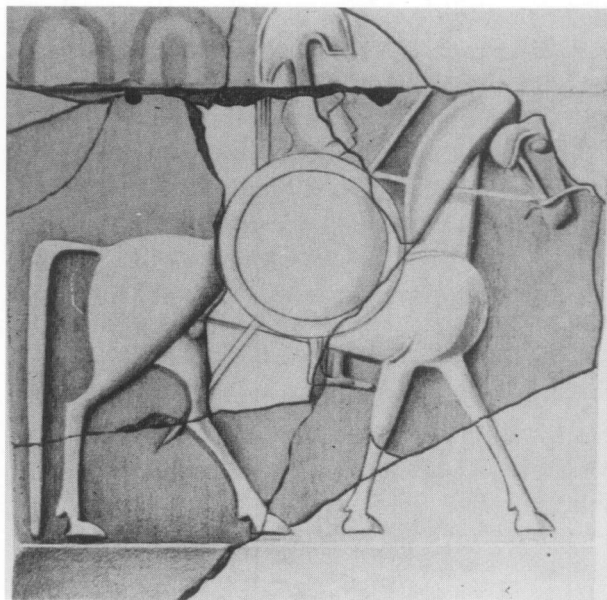
This account in Livy is largely paralleled in the description given by Dionysius in his *Roman Antiquities* (4.16.1–18.2). In Dionysius, however, the fourth class is equipped with shields, swords and spears

*These moulded representations of mounted hoplites from Roman temples are likewise hardly evidence for the adoption of hoplite tactics by the Roman army, rather than simply hoplite equipment.*

*Furthermore, many moulds used in Rome were also used in other towns in Latium and southern Etruria. Consequently we have no idea whether these moulds were even manufactured in Rome.*

where Livy gives just spears and javelins; and the fifth class are given javelins in addition to the slings in Livy. Dionysius adds the two centuries of artisans to the second class, not to the first class as in Livy, and he adds the centuries of musicians to the fourth class rather than to the fifth class. Finally he gives the census rating of the fifth class as a minimum of 12½ *minae* (=12,500 *asses*) rather than 11,000 *asses* as in Livy. These are all minor differences, however, and in every other respect Dionysius' account is remarkably close to that in Livy.

The descriptions of the Servian army in Dionysius and Livy clearly assume that each of the census classes formed a line in the military formation. Thus the hoplites constituted the first line with



the second, third and fourth classes drawn up behind in that order, each with lighter equipment than the previous line. Finally the fifth class acted as skirmishers outside the line of battle. Such a formation contradicts our own description of the Servian army given above, an army composed entirely of hoplites all from a single *classis* supported perhaps by light armed from the *infra classem*. In this case we must examine the descriptions in Dionysius and Livy more closely and show why the five line multi-equipped army cannot truly represent conditions in sixth century BC Rome.

### The Servian 40 century legion

This legion, drawn from an assembly with three distinctions of wealth, is itself a development from the original legion which, as we have seen, had only one census class. It is therefore most likely that in its earliest form the 'Servian' army consisted of just one class of hoplites and that classes II to V did not exist. The original Roman phalanx therefore consisted of one *classis* of 40 centuries of 'juniors' (i.e. 4,000 men) equipped in full hoplite panoply with light armed troops drawn from the *infra classem* who were not as yet organized into classes. At some point a further 20 centuries were added (i.e. classes II and III) to make the total 60 centuries. As the army organization expanded with the addition of the extra census classes, the original *classis* of forty centuries was preserved as the first class in the descriptions by Livy and Dionysius.



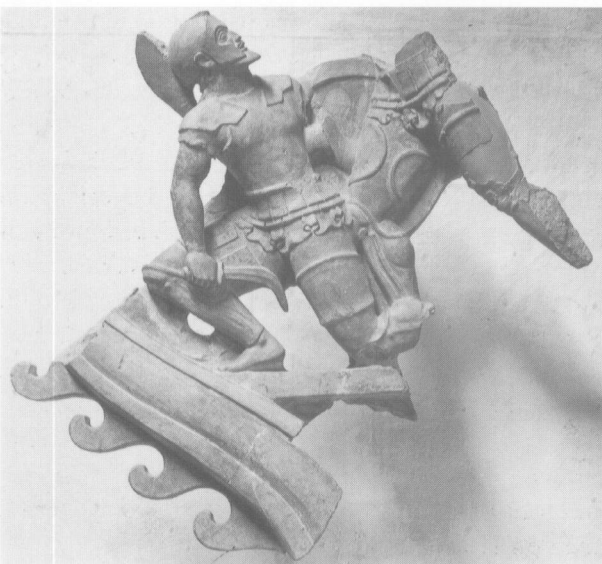
*Fragments of a fictile plaque from the temple of Mater Matuta in Satricum, a town in Latium, showing an armoured warrior carrying a shield with a centaur blazon. Note the*

*triangular plate to defend the groin suspended underneath the tunic. The sculpture dates to the late sixth or early fifth century. (Photo: Museo Nazionale di Villa Giulia, Rome)*

### The 60 century legion

What then is the correct chronology of the development from a legion drawn from a single hoplite class of 40 centuries to one of 60 centuries from an assembly divided into three census classes? Though we can offer no conclusive proof, the most appropriate time for this expansion seems to be the end of the fifth century BC. This was the time when Rome embarked on a ten year war with Veii (traditionally 406–396) which, when placed alongside the commitments generated by membership of the Latin League, must have greatly stretched her military resources. It was then that military pay was introduced for the first time (Livy), a development which looks very much like a measure intended to ease the burden on less wealthy citizens newly brought into the army.

The above analysis has attempted to outline what seems to be the most likely form of the 'Servian'



*Fragment from the central acroterium of the Sassi Caduti temple at Falerii Veteres, showing an armoured warrior with a curved sabre. The use of auxiliary thigh and arm protectors died out in*

*Greece in the sixth century, but they continued to be popular in Etruria. The sculpture dates to the beginning of the fifth century. (Photo: Museo Nazionale di Villa Giulia, Rome)*

army up to the end of the fifth century BC. Given that the primary evidence is so scarce and so difficult to interpret, it is hardly surprising that other authors have adopted different approaches. We shall therefore also discuss alternative views.

Tradition assigns the adoption of hoplite tactics to the mid sixth-century BC, but there have been attempts to down-date the change to the mid-fifth century. M.P. Nilsson in particular argued that the hoplite reform occurred with the creation of the first military tribunes with consular power (444) and the creation of the censorship (443), but few historians now accept the link between the new offices and the census reform. A strong obstacle to Nilsson's view is the fact that the political assembly based on the 'Servian' reform was already in existence *circa* 450 BC and this implies an even earlier date for the army reform itself. Furthermore, it is very difficult to explain Rome's ability to hold her own in a world dominated by Etruscan military power and even to carve for herself a significant hegemony in Latium if she had not adopted the most advanced military practices of the day. It seems an inescapable conclusion therefore that Rome did not lag far behind in copying her neighbours.

Nilsson did, however, draw attention to one piece of evidence for the use of hoplite tactics. This is the incident recorded under 432 BC when the dictator Aulus Postumius had his son executed for leaping out of the battle-line to engage the enemy single handed. A similar event is recorded under 340 BC when the consul T. Manlius Torquatus was said to have executed his son for the same offence (both in Livy). No wonder that elsewhere in Livy's narrative individuals are especially concerned to get permission before engaging in single combat! Whether these reports are genuine is debatable, especially as far as the accuracy of the dates is concerned, but they may conceivably be recollections of the sort of military discipline especially appropriate to the phalanx. We should note, however, that these reports do not help us date the introduction of the phalanx – hoplite warfare could have had a long history even in 432 BC and our mid sixth century BC date must stand. (On this phenomenon see S.P. Oakley, 'Single Combat in the Roman Republic', *Classical Quarterly* 35 (1985) 392–410.)

We have argued above that the hoplite army created by Servius Tullius had a strength of 4,000 and was later augmented to 6,000 at the end of the fifth century BC. Others (though far from all) have suggested that the 60 century army was itself the direct result of Servius' reform and not a later development. That the original Servian army had 60 centuries seems unacceptable because it rejects the relevance of the distinction *classis: infra classem* in favour of less satisfactory evidence. The evidence for the 60 century army is merely that in the descriptions given by Livy and Dionysius the equipment assigned to the first three classes (i.e. the first 60 centuries of 'juniors') belongs to various forms of heavy infantry while that given to classes IV and V is much lighter. But along with many other modern historians the present writers believe that the descriptions in Dionysius and Livy are not based on genuine knowledge of archaic conditions, but are the result of quite arbitrary antiquarian reconstruction, and cannot therefore be pressed as evidence. Furthermore, the assignment of light equipment to the centuries of classes IV and V is bogus because we have no genuine evidence for the light armed ever being organized into centuries (this was certainly not the case in the manipular army).



*Fifth century terracotta from Veii showing Aeneas carrying Anchises. This terracotta is of principal interest as early archaeological evidence for the legend of the Trojan migration to Latium. It is also of interest as one of the earliest representations from Latium of a warrior wearing a short tunic and equipped with greaves, a muscle-cuirass and a crested Italo-Attic helmet. This combination becomes almost standard for all Latin hoplites. (Photo: Museo Nazionale di Villa Giulia, Rome, Inv. no. 40272)*



# EARLY CAVALRY

## The sex suffragia

A more acceptable variant on this interpretation is that, although the army instituted by Servius consisted of 40 centuries, it expanded quickly to a total of 60 centuries by the beginning of the Republic (trad. 509 BC). The difference with the present interpretation is one merely of timing. We prefer to think that the expansion better fits conditions *c.* 400 BC. Those who pursue the theory of an earlier expansion argue that at the beginning of the republic the army was split into two legions, one for each of the two consuls. This is of course possible, but we should note that there is no positive evidence for this and that the proposition relies entirely on intuition. We shall discuss the question of the increase in the number of legions in further detail below.

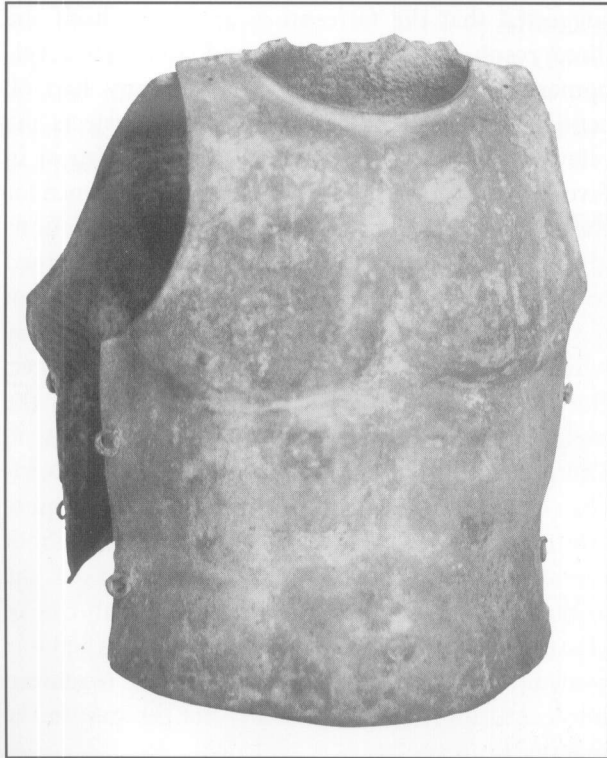
Our conclusion from all this has three parts. Hoplite tactics were introduced into Rome, via Etruria, in the mid sixth century BC. The earliest Roman hoplite army was composed of 40 centuries of hoplites. At some point before the creation of an additional legion the 40 centuries were augmented by the addition of a further 20 centuries. Some suggest that this took place before the collapse of the Roman monarchy (trad. 509 BC) but the present authors prefer *c.* 400 BC as a more likely date.

It should come as no surprise that, just as with the centuries of infantry, the Servian cavalry organization described by Livy and Dionysius is not genuinely archaic. Livy describes how Servius added twelve centuries to the pre-existing cavalry force of six centuries:

'So with the infantry force armed and organized in this way, 12 centuries of cavalry were enrolled from among the leading men of the state. He formed a further six centuries (three had been created by Romulus) with the same traditional names. For the purchase of horses 10,000 *asses* were given from the state treasury, and for their upkeep rich widows were assigned to pay 2,000 *asses* each year.'

The six centuries to which Servius is supposed to have added his twelve were titled *Tities priores* and *posteriores*, *Ramnes priores* and *posteriores*, and *Luceres priores* and *posteriores*. In later times these six centuries had a special status and were known as the *sex suffragia* ('the six votes'), a title which distinguished them from the remaining twelve equestrian centuries in the *comitia centuriata* (Livy, Cicero, Festus 452L). It is almost certain therefore that there had once been only six centuries of *equites* and that the addition of a further twelve could not have been the work of Servius Tullius. The error made by Roman historians was to assume that the final total of 1,800 *equites* in the late republic was not the product of a later increase in their numbers (for which see below) but had been instituted at the very beginning by Servius. Furthermore, they did not realize that 1,800 is an impossibly high figure for the cavalry resources of archaic Rome.

It would seem superficially obvious that the *sex suffragia* of *equites* reflects an original force of 600 cavalry, but a significant problem here is that we have no evidence of cavalry in later times being organized into centuries as was the infantry. Later Roman cavalry were organized into *turmae* of 30 men, each



*Italian muscle-cuirass. This example, in the British Museum, is from Ruvo in South Italy and dates to the second half of the fourth century. Italian*

*muscle-cuirasses can be easily distinguished from Greek examples as they have no shoulder-guards. (Photo: N.V. Sekunda)*

divided into three *decuriae* of ten men. Indeed the ancient religious ceremony known as the *transvectio equitum*, which was probably instituted in the early fifth century BC, was performed by six *turmae* and not six centuries.

The retention of the titles Tities, Ramnes and Luceres suggests that the Servian reform itself did not fundamentally alter the organization or recruitment of the Roman *equites*. They remained drawn from the three tribes and there seems to have been no special census rating for service as an *eques* over and above that of the infantry. Livy states merely that they were drawn from the 'leading men of the state' (*ex primioribus civitatis*).

These considerations combine to suggest that the *sex suffragia* were not six centuries of true cavalry. It seems that the three tribal centuries of *equites* survived the Servian reform as an élite hoplite band, not as true cavalry, and assumed the honorific title of centuries *priores*. The date and circumstances of the addition of the three centuries of Tities, Ramnes and Luceres *posteriores* are quite obscure. Perhaps an expansion in the 'leading men of the state' dictated an expansion in the number of equestrian centuries. Whether this occurred at the time of the Servian reform or at a later date is uncertain.

The designations *priores* and *posteriores* suggest not only a notional position in the battle-line. Greek cavalrymen would be individually attended by mounted grooms who would withdraw behind the cavalry when the troops were formed up. Perhaps the *equites posteriores* fulfilled a theoretical relationship of grooms to the *equites priores*; and it may be that this notional doubling suggested to the antiquarians that at some stage the *priores* had made use of two horses. Interesting details have been preserved by Granius Licinianus and Festus concerning the supply of two horses to some of the cavalry: 'The Romans used the same number of horses, that is two, in battle so that

they might transfer to a fresh one when the other was worn out; the double amount given to the cavalrymen for two horses was called the *aes pararium*' (Festus); 'I shall not pass over the cavalry which Tarquin introduced in such a way that the centuries of *priores* led two horses into battle' (Granius Licinianus).

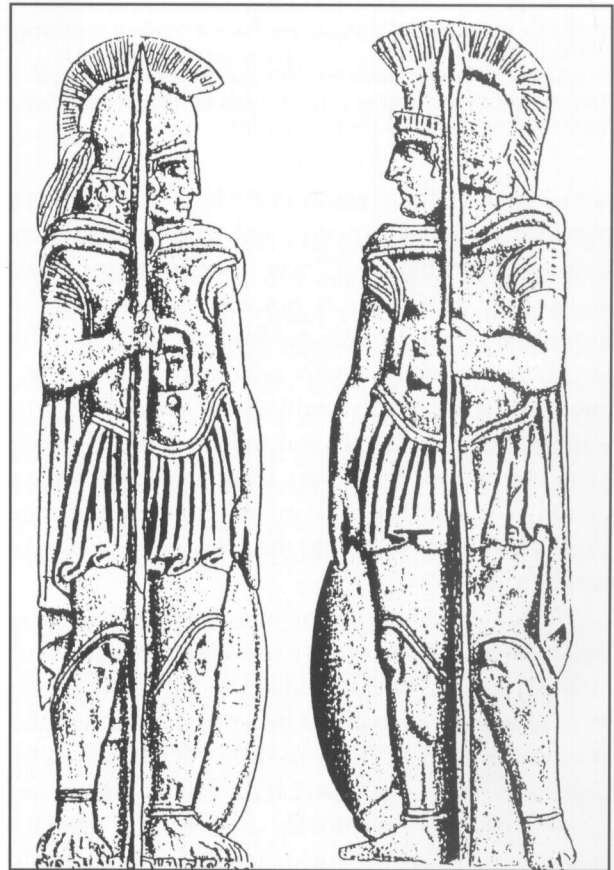
### The public horse and true cavalry

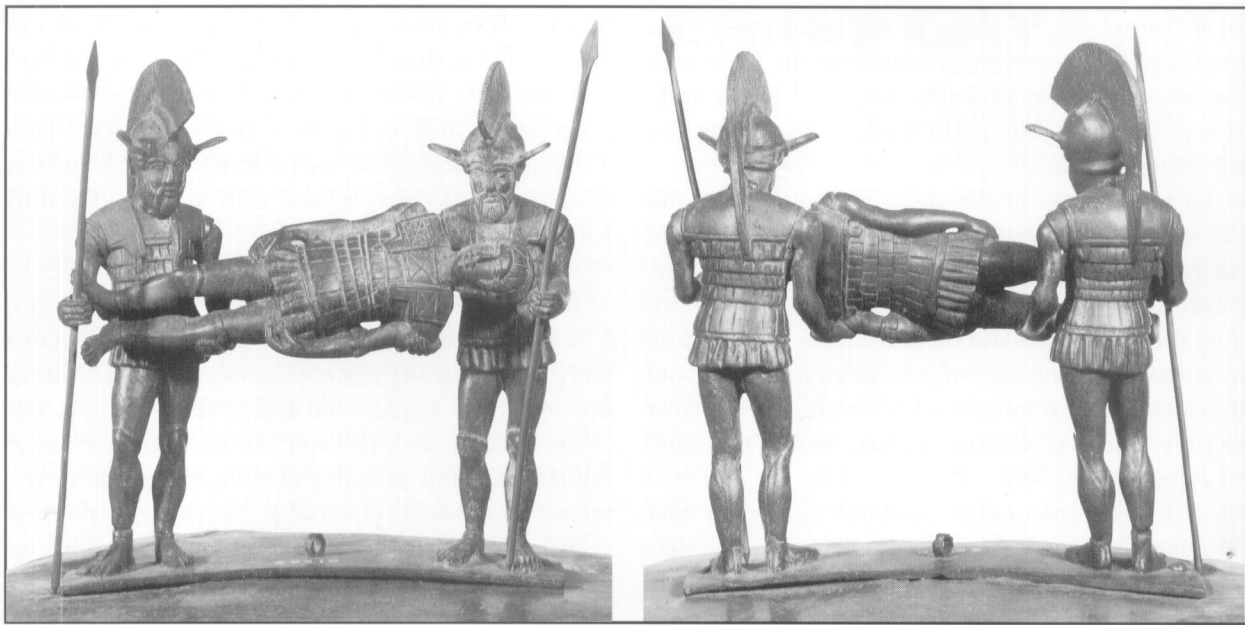
The first plausible evidence for the establishment of a force of true cavalry at Rome comes in 403 BC: during the final and decisive struggle with Veii. As has already been noted, this war saw the introduction of military pay and probably also the expansion of the infantry Legion. Livy records that 403 was the first year in which cavalrymen served on their own horses and that they were then rewarded by the introduction of pay for the cavalry. Such volunteers serving on their own mounts were called *equites equo privato* or *equites suis merentes*.

How funds were raised to provide this pay is unknown. In the later Republic Rome also main-

*These two bone plaques from Palestrina, dating to the fourth century, belong to a series of laminae of different sizes, which probably once formed the veneer of a magistrate's seat of office (sella curulis). This pair of hoplite warriors wear the dress and equipment typical of*

*Latin hoplites of the period: crested Italo-Attic helmets, muscle-cuirasses, and greaves, together with a short tunic and cloak. Note the round clasps securing the cloak. (Photo: Museo Nazionale di Villa Giulia, Rome, Inv. nos. 13236, 13237. Courtesy Montvert Publications)*





Front and back views of the handle of a lid of a Praenestine cista showing two warriors carrying the body of a third home. This cista is one of the earlier ones in the series and probably dates to the end of the fourth century. Unlike the overwhelming majority of depictions of hoplites from Latium they

do not wear greaves, and they wear the composite cuirass instead of the muscle-cuirass. The muscle-cuirass may not have been universal in Latium at this period, or perhaps Etruscan hoplites are meant to be shown. (Photo: Museo Nazionale di Villa Giulia, Rome, Inv. 25210)

tained another force of cavalry whose mounts were provided at public expense, and who were paid an allowance for fodder. These cavalry were called *equites equo publico*. It is not known whether the institution of *equites equo publico* existed before the establishment of the *equites equo privato* in 406 BC, but this seems highly unlikely as raising the resources to supply horses and fodder required much more strenuous fiscal effort than simply providing cavalry pay. Consequently we are drawn to the conclusion that prior to 406 BC the title *eques* was purely honorific.

In contemporary Sparta and Corinth the provision of horses for the cavalry was a fiscal requirement imposed on the estates of widows and orphans, which were administered by the state upon the death of the head of a household. Livy records the imposition by Servius of taxes on orphans and widows, but the *aes equestre* (the tax to provide horses) and the *aes hordearium* (the tax to provide fodder) were probably

later developments which have been incorrectly attributed to Servius. In a different strand of the Roman historical tradition to that in Livy, we find the introduction of similar taxes attributed to M. Furius Camillus in 403, this time on unmarried men and orphans (Plutarch and Valerius Maximus). It is possible therefore that the institution of *equites equo publico* was established then.

We presume that the original *equites equo privato* were by and large recruited from the 'leading citizens' of the *sex suffragia* (by this time a political grouping rather than a military organisation), and the establishment of the *equites equo publico* enabled all 600 to serve as cavalry. The expansion of the *equites equo publico* to a strength of 1,800 probably only occurred towards the end of the fourth century BC (*see below*). In the Second Punic War, when the number of *equites equo publico* was insufficient to provide the cavalry complement of a vastly increased number of legions, the institution of *equites equo privato* had to be relied on once again.

As has already been mentioned, tradition maintained that before the Servian Reform three tribal centuries of *equites* had existed, but it is doubtful whether these 'horsemen' ever operated as true cavalry on the hoplite battlefield. In Archaic Greece forces of true cavalry were only maintained by Thessaly and Boeotia. In these two states there existed an aristocracy sufficiently wealthy and

powerful to provide their own cavalry horses. Elsewhere Athens had created a force of 300 cavalry by 457, later expanded to 1,200 *circa* 443; Sparta created a force of 400 cavalry in 424, and few other Greek states had any force of cavalry worth mentioning before the closing decades of the fifth century BC.

The principal reason for the late emergence of cavalry in Greece was the difficulty in providing horses, or compensation for privately owned horses killed in battle, and allowances for fodder. Before the invention of the horse collar in the medieval period oxen were used to plough and to pull carts, and the horse was simply used as an extravagant means of transport. Aristocrats with the wealth to maintain horses were few and were reluctant to gamble their expensive pets on the battlefield. Like the hoplite city-states of Greece, the hoplite city-states of Italy needed to develop methods of raising state revenues before they could subsidize and compensate horse-owning aristocrats for their service as cavalrymen. Consequently it is unlikely that Rome possessed any true force of cavalry before the last decades of the fifth century BC.



# THE EXPANSION OF ROMAN MILITARY STRENGTH

By the end of the fourth century BC the Roman army definitely comprised four legions. Unfortunately there is no specific ancient testimony telling us exactly when and how new legions came into being. Instead we have to proceed using a mixture of guesswork, assessment of probabilities, and inference. The type of problem confronting us should be clear when we recognize that an increase in the number of Roman legions could be the result of two quite different processes. On the one hand, existing manpower could have been split into a larger number of units (i.e. a purely organizational development involving no increase in manpower). On the other it could be the case that new units were created by means of increased conscription. It is quite possible, moreover, that both processes operated at different stages of development. What follows is an outline of the most likely pattern of development in the fourth century BC.

## The infantry

We have already attempted to show that the Roman army *c.* 400 consisted of a single legion of 6,000 men. In 366, however, after many years of electing military tribunes with consular power as the main officers of state, Rome resumed the election of just two annual consuls. It is likely that it was as a response to this that the legion was split into two. At this time Rome cannot have been in a position to recruit extra troops from thin air; manpower must therefore have remained the same and was now divided into two

*Scene from the painted frescoes of the François Tomb from Vulci. Dating from the second half of the fourth century, the tomb shows both mythological and historical scenes. In this historical scene the Etruscan Aule Vipinas (Latin Aulus Vibenna) kills one Venthi Cau[ ]plsachs,*

*possibly a Faliscan rather than a Roman, but a Latin for sure. He is equipped with hoplite shield, muscle-cuirass and greaves, and dressed in the short tunic we have seen to be typical of Latin hoplites at this period. The tunic colour is red.*



This Praenestine cist has not been firmly dated yet, but the equipment shown indicates a date on the eve of the adoption of manipular weapons and tactics in Latium. The traditional hoplite shield and spear, the muscle-



cuirass, greaves, tunic and cloak are retained unchanged, but the Italo-Attic helmet has been replaced with helmets of the Montefortino type. (Photo: Hermitage, St Petersburg, Inv. B 619)

legions each of 3,000 men. We know from Livy, however, that by 311 Rome had four legions. He comments that this year saw 'the election by the people of sixteen military tribunes for distribution amongst the four legions, whereas these had previously been almost exclusively in the gift of the dictators and consuls' and the implication is that the existence of four legions was a recent development. These legions were undoubtedly formations organized around the maniple and, if we follow Polybius' description of the manipular legion, consisted of 3,000 heavy infantry and 1,200 light-armed. The total force was therefore 12,000 heavy infantry and 4,800 light troops: more than double that available in 366.

Such a large increase becomes understandable when we consider Rome's successes in the fourth century BC, particularly her defeat of the Latins and the conditions of the peace made in 338. Rome imposed terms on her defeated enemies which significantly increased the pool of citizen manpower. Not only were the towns of Lanuvium, Aricia, Nomentum, Pedum, Velitrae and Antium all given full Roman citizenship; but a new type of citizenship was also introduced. This was the *civitas sine suffragio* (citizenship without the vote), a status whereby the

holder was liable for taxation and military service but could not participate in Roman political assemblies or hold office. This *civitas sine suffragio* was given to the important Campanian towns of Capua, Suessula and Cumae (plus Acerrae in 332), and the Volscian towns of Fundi and Formiae (and Privernum in 329).

These grants in themselves hugely increased available manpower, but Rome pursued another policy which must also have had the same effect. This was the appropriation of some of the land of a number of defeated opponents. Land confiscation allowed the settlement of Roman citizens – citizens who previously may have been too poor to be liable to military service under the 'Servian' system. But now, with their new land, they would become sufficiently wealthy to qualify for military service.

Thus even without the creation of *civitas sine suffragio* Rome would probably have increased her available manpower. But with all these measures combined, the increase must have been colossal. The census records for the fourth century BC are generally considered to be very unreliable, and we are therefore unable to quantify this increase precisely, but we can at least note that because of the expansion of the mid fourth century BC the area of land occupied by Roman citizens increased from *circa* 1,500 square kilometres to *circa* 5,500. And we should not forget that allied communities possessing treaties with Rome also had to supply their own contingents for Rome's wars.

It should therefore cause us no surprise that sometime between 338 and 311 Rome was able to double her infantry force to four legions.

### Legionary blazons

From the evidence given above it seems that at some date after 338 BC the Roman army comprised four legions, and for a number of years before manipular equipment and tactics were introduced these legions may have been equipped as hoplites. Pliny, after telling us that Marius gave the Roman legions their eagle standards during his second consulship in 104 BC, mentions that previously the legions carried eagle standards as their first badge, but that in addition they carried four others; wolves, minotaurs, horses and boars going in front of the various *ordines*. *Ordo* usually means 'rank' and so the natural interpretation of Pliny's words would be that these standards would

be carried in front of the various ranks of the manipular army: that is the *triarii*, *principes* and *hastati*. There is an obvious problem that four standards do not go into three ranks, so it seems reasonable to assume that Pliny has misunderstood his source, presumably one of the ‘antiquarians’. Given that there were traditionally four legions from the closing decades of the fourth century onwards, it is tempting to assume that Pliny’s source was describing the four legionary standards.

Two of the four legions would have been the two Roman legions most probably formed after the legionary split in 366 BC. For these two ‘Roman’ legions the devices of the wolf and the boar would be the most appropriate symbols. The wolf, together with the woodpecker, was the animal sacred to Mars (Plutarch, *Life of Romulus* 4). We have already met the she-wolf, sacred to Mars, in the legend of Romulus and Remus, which was already reaching its finished form during the fourth century. The wolf does not appear by itself as a symbol in Roman republican coinage, but the she-wolf suckling Romulus and Remus does, and it is tempting to assume that this is the symbol (perhaps of *Legio I*)



Coin struck in Neapolis by the Campanian League circa 340 BC, bearing the device of a human-faced bull, presumably the badge of the Campanian

people as a whole. The same device occurs on coins of other Campanian cities, such as Caes and Hyria, as well as on coins of Rome itself.



Following the extension of citizenship to the Campanians, the human-faced bull starts to appear on Roman coins. This half or quarter litra, showing

the protome of a human-headed bull on its reverse, was issued c. 300 BC. (Photo: Hirmer Fotoarchiv, München)

which Pliny’s source is describing. The significance of the boar is less certain. We might note that in Imperial times the boar was one of the symbols of the *Legio X Fretensis* and the symbol of the *Legio XX Valeria Victrix*. Its significance has not been explained so far, but it was perhaps originally the symbol of Quirinus, the Sabine equivalent of Mars, who had continued to have a separate cult existence in Rome after the amalgamation of the two founding communities around 600 BC.

The symbols of horse and minotaur are even more difficult to explain. However, they may allude to the origins of the two new legions. In Greek iconography the minotaur is shown as a bull-headed human, and, indeed, such a beast is shown on an early moulded relief from Rome. The human-headed bull is, however, much more common, especially on Sicilian and Italian coins, where it is usually interpreted as representing some or other river-god. The human-headed bull was also the symbol of the Campanians. This is presumably the minotaur referred to by Pliny’s source. Thus it may be suggested

that one of the four legions of the late fourth century was formed from Campanians to whom Roman citizenship had been extended, hence they took as their badge the former national symbol of Campania.

The horse cannot be explained in a similar way, as it appears on Italian coins issued by a large number of towns. Thus it cannot be isolated as the symbol of a particular region. We note, however, that citizenship was extended to both Latin and Volscian communities at about the same time as it was to the Campanians, and it may be that these communities made up the fourth legion. On Roman republican

coins the horse frequently appears as a device on those which bear the head of Mars on the obverse.

### The cavalry

We have already suggested that the Roman army of the very late fifth century BC had a maximum of six centuries of cavalry, and that these were represented in the electoral assembly by the *sex suffragia*. We have also seen that the further twelve centuries of the electoral assembly which brought the total up to eighteen were a later addition. It is interesting therefore that the twelve additional centuries amount to the total cavalry component of a four legion manipular army (see Polybius). It seems very likely therefore that the introduction of the four legion army was accompanied by an overhaul of the cavalry in which 1,200 new *equites equo publico* were created, 300 per legion. The existing force represented in the *sex suffragia* must have been relegated to a ceremonial and electoral role only. A hint of this large increase in cavalry resources can be found in the *Ineditum Vaticanum* whose author stressed Rome's need greatly to augment her cavalry forces in order to face the Samnites (quoted below).

*Etruscan Mirror, dating to the late fourth century or early third century. In Etruscan iconology, influenced by the struggle against Roman expansion, it is normal for Etruscans to be represented as Greeks and Romans as Trojans. This arose out of the commonly held belief that the Roman nation grew from Trojan immigrants originally settled in Latium by*

*Aeneas. By extension it could be argued that on this mirror Hercules (Herkle) represents an Etruscan while the Amazon Hephleta represents a Roman. As a shield blazon Hephleta has the head of a human-headed bull: perhaps a Roman legionary shield blazon. The martial goddess Minerva looks on.*



The expansion of the strength of the *equites equo publico* to 1,800 seems not to have been the only increase in Roman cavalry resources. In 340 1,600 Capuan *equites* were granted Roman citizenship for their loyalty to Rome at a time when the rest of Capua had deserted to Rome's enemies. In addition the Capuans were forced to provide each cavalryman with 450 *denarii* to pay for the upkeep of their horses (Livy).

## MANIPULAR WARFARE

Whilst hoplite warfare remained dominant from the middle of the sixth century BC down through the fourth in Latium and many areas of Italy, elsewhere in the peninsula other forms of warfare were ascendant. Eventually one of these, manipular warfare, was adopted by the Roman legions. Essentially the manipular formation consisted of a number of lines of infantry, each line consisting of blocks of troops (maniples) with wide spaces separating the maniples, enabling them to advance or withdraw independently of the movement of the battle-line as a whole. Each line of maniples might be equipped differently.

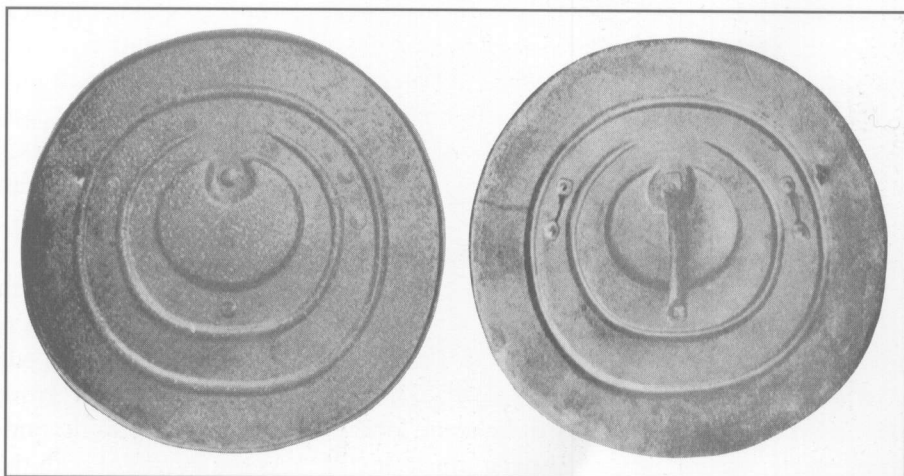
At some point during the fourth century BC the Roman hoplite phalanx was abandoned and replaced by the much more flexible 'manipular' formation. When and why this took place are obvious questions, but they are not so easily answered.

### The Gallic invasions

Many have stressed the importance of the defeat at the Allia at the hands of the Gauls, and have claimed that this disaster led the Romans to adopt the manipular formation. Dionysius and Plutarch certainly believed that some form of tactical change was employed when the Gauls next returned. Both claim that it was under the guidance of M. Furius Camillus that the Romans adopted the oval shield (*scutum*) and the heavy javelin (*pilum*) to replace the round shield (*clipeus*) and the thrusting spear (*hasta*) of the hoplites. Neither author explicitly records the introduction of maniples, but this must be assumed since the adoption of these weapons without the appropriate manipular formation would be a nonsense.

Dionysius tells how the Roman soldiers ducked down under the blows of the Gallic swords and took them on the shield, while striking at the enemies' groin with the sword. Plutarch gives a slightly different variation, saying oddly that the Gallic blows were taken on the *pilum*, but we should treat such descriptions with great caution. We know, for instance, that a different sort of tactic had been employed much later in defeating the Gauls at Telamon in 225 BC. Here the first Roman line was equipped with the *hasta* instead of the *pilum* and the *hasta* were used to take the initial blows of the enemy. It seems difficult therefore to believe that earlier Romans, as according to Plutarch at least, had defeated the Gauls by doing precisely the opposite and abandoning the *hasta*. What seems to have happened is that these late authors knew that the Gauls had been defeated and

European shields of the late Bronze Age and early Iron Age frequently have either 'U-notch' or 'V-notch' decoration. Such shields are called *Herzsprung* shields after the site where the principal shield in the series was found. This example of a 'U-notch' shield from Bohemia is closest to the shields shown on the Certosa Situla, even though it is much earlier in date. (Photo: J. Coles)





The Earliest Roman Warriors,  
c.700 BC  
1: 'Romulus'  
2: 'Remus'





Horatius at the Bridge, 508 BC

1: Etruscan Hoplite

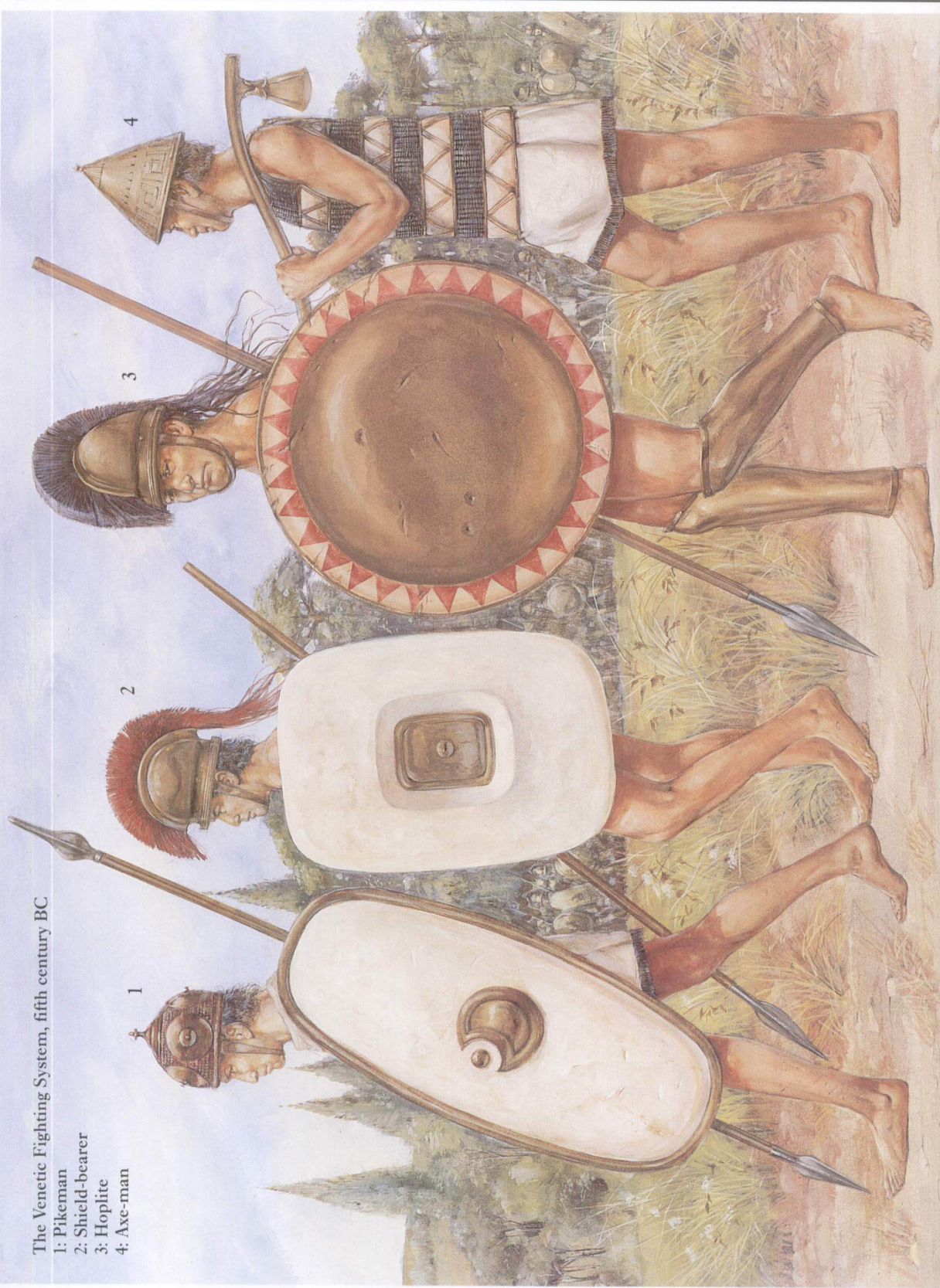
2: Roman Hoplite

3: Latin Hoplite



The Venetic Fighting System, fifth century BC

- 1: Pikeman
- 2: Shield-bearer
- 3: Hoplite
- 4: Axe-man

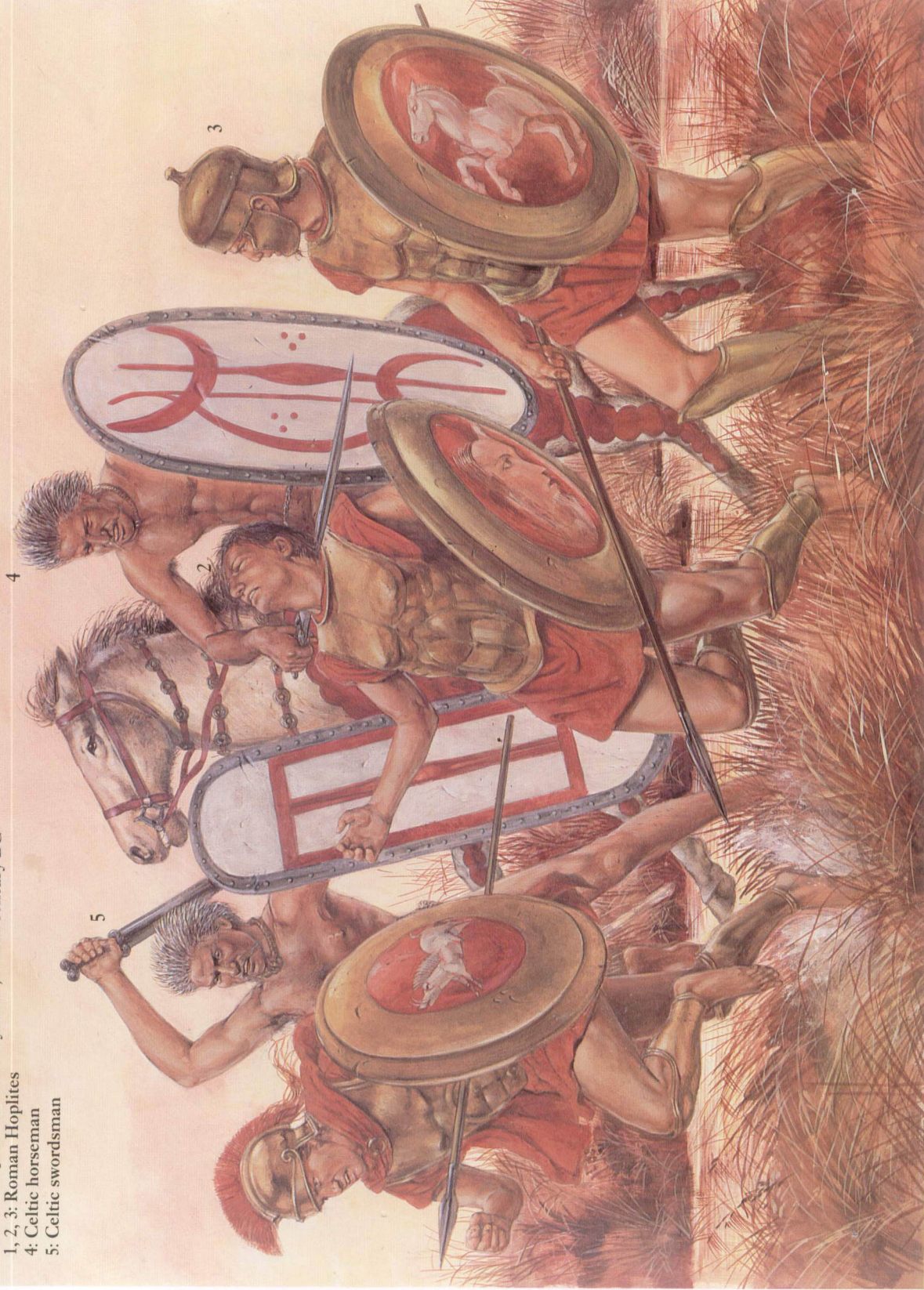


Roman Hoplites defeated by Celts, fourth century BC.

1, 2, 3: Roman Hoplites

4: Celtic horseman

5: Celtic swordsman





Sannite Warriors, c.293 BC  
1, 2, 3: Sannite spearman  
4: Javelineer

Sacrifice establishing a treaty between Romans and Samnites

1: Roman Lituus-bearer    3: Roman General

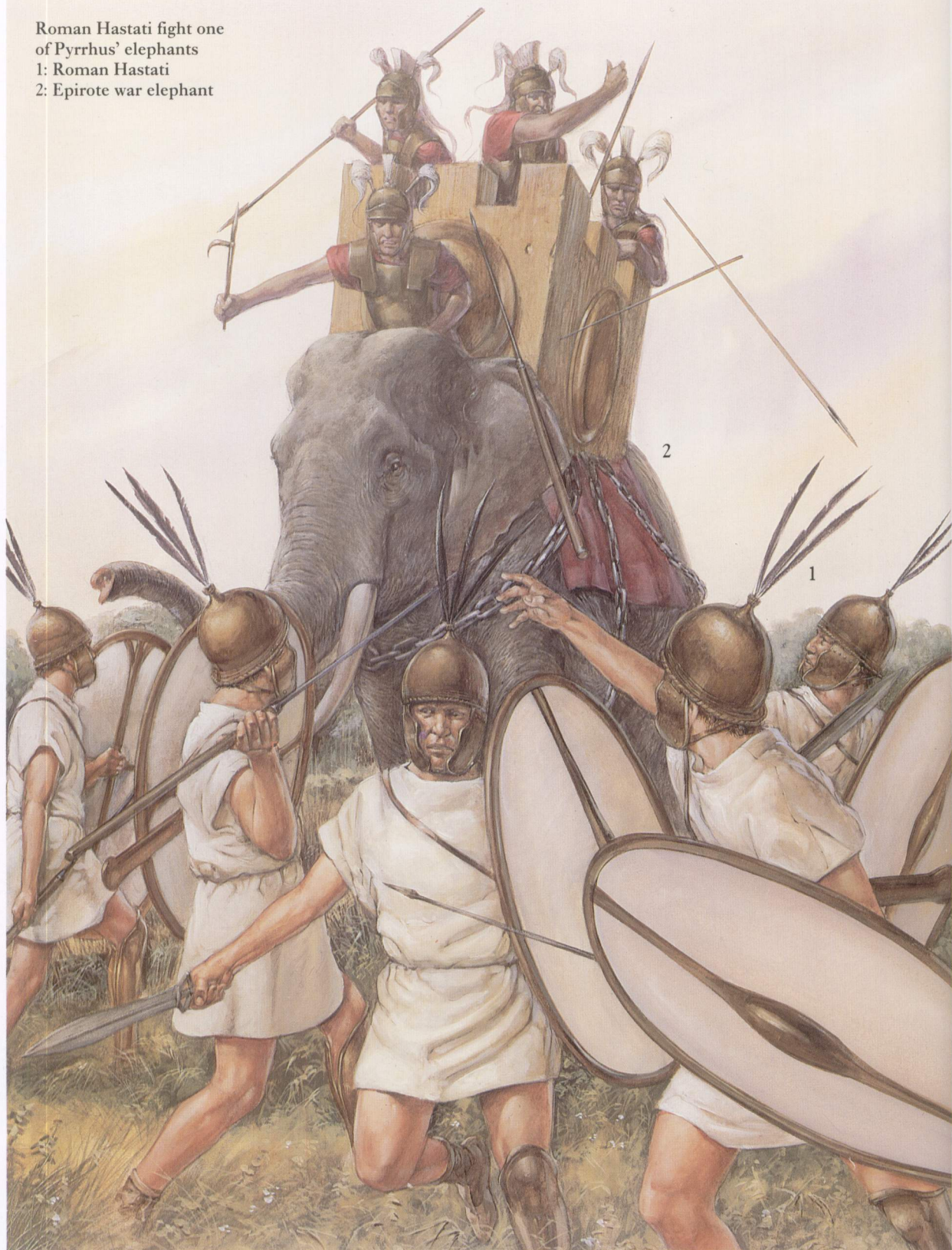
2: Samnite General    4: Priests



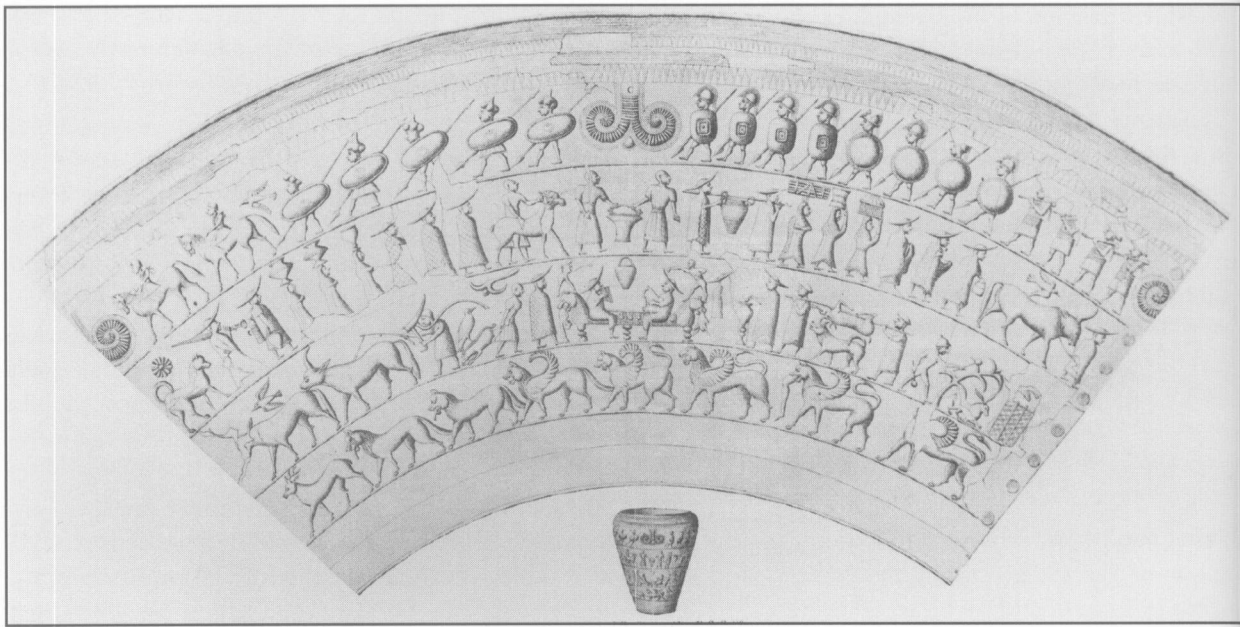
Roman Hastati fight one  
of Pyrrhus' elephants

1: Roman Hastati

2: Epirote war elephant







*Reconstruction of the Certosa Situla. The uppermost register shows the four groups of*

*Infantrymen discussed in the text. (after P. Ducati, *La Situla della Certosa*, 1923)*

assumed that some tactical innovation must have been employed. With this in mind they gave a garbled and unlikely version (for which they probably had no direct evidence) of later tactics.

There is a further and a stronger argument against the Gauls acting as the catalyst for the introduction of manipular tactics and equipment at Rome. The Romans will presumably have copied manipular tactics from an enemy who had shown this formation to be superior to the phalanx. This enemy could hardly have been the Gauls since they certainly did not use manipular tactics. The origins of manipular warfare are obscure, and the existing literary fragments shed no light on the question. The earliest possible depiction of manipular warfare comes on an object known as the Certosa Situla.

### The Certosa Situla

The situla is decorated with four registers showing an animal scene, a banqueting scene, a sacrificial procession and a parade of warriors. It is the parade with which we are principally concerned. The parade opens with two cavalrymen dressed in a fringed tunic, covered by what appears to be some kind of cuirass made out of coarsely-woven thick textile

material, and pot helmet. They carry palstave axes over the shoulder. It is possible that the two horsemen represent an illustrative attempt to indicate that the infantry line was supported by cavalry stationed on either flank. The horsemen are then followed by one group of five infantrymen, and then by three other groups of four. The warriors of each group are identically equipped, but each group is different.

The first group of warriors carry long oval shields. The shields have a narrow border and in the centre a boss of 'Herzsprung' shape. The fringed hem of a tunic is shown beneath the shield on some of the figures, and it is possible that a textile cuirass, similar to that worn by the horsemen, would have been worn behind the shield. The spear is considerably longer than those carried by the other figures on the situla, and it ends in a long butt-spike. The warriors wear a 'disk and stud' helmet. The helmet is held on by a strap passing under the chin. When these and other figures from the Certosa Situla are illustrated, the photographs show the cheeks of these warriors represented by bulges punched out of the bronze sheeting. These should not be interpreted as metal disks attached to the chin strap.

The second group of infantrymen carry square shields with rounded edges and a square boss at the centre. The third group of warriors carry round shields with rims decorated with a triangular pattern. As the shields of both these groups of warriors reach

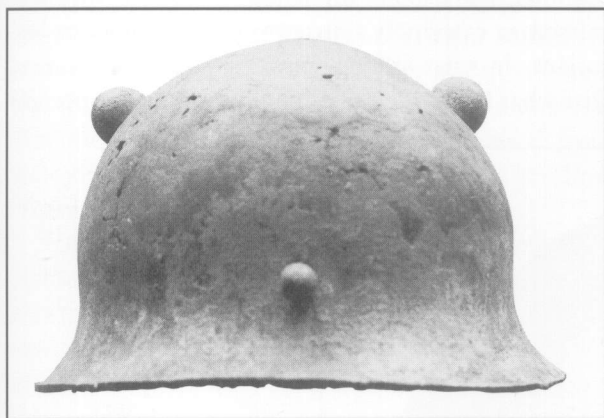
almost to the knee, we are unable to see whether they wear tunics or any body armour. Both groups wear pot helmets and carry hoplite spears with quite wide leaf-shaped points. All three groups of spearmen carry their spears reversed, with the points towards the ground. This may represent standard battlefield practice during the advance, or it could have funerary significance.

It could be suggested that these groups of spearmen are intended to represent a manipular battle-line in two dimensions, and are thus ancestors of the Roman *acies triplex* of *hastati*, *principes* and *triarii*. Unlike the Roman battle-line, however, the Venetic warriors all carry fighting spears rather than javelins. Other examples of Veneto-Illyrian bronze work, such as the Arnoaldi situla, show warriors

with oblong shields, helmets and a pair of javelins, and the Carpena decorated plaque shows warriors with round shields, helmets and a pair of javelins. Such troops would use armament much more appropriate for precursors of Roman *manipularii*, and it may be, indeed, that this type of weaponry gradually replaced that shown on the Certosa Situla.

Behind the three groups of spearmen march a final group of four unshielded infantrymen, wearing fringed tunics, textile cuirasses like those worn by the cavalrymen and conical helmets and carrying palstave axes over their shoulders. What are these figures supposed to represent? In the Roman manipular battle line the light infantry commenced the fight by engaging the enemy with javelins before the two battle-lines closed. When this happened the light infantry withdrew through the gaps between the maniples and re-formed behind the third line. These Venetic axe men may also be light infantry. On the other hand the battlefield role of the axemen may have been to finish off enemy wounded as the triple battle-line advanced. Conical helmets of similar type are also shown on other pieces of bronze-work produced by the Veneto-Illyrian culture.

Whatever the validity of these varied speculations may be in detail, it certainly does seem that in the Certosa Situla we can see a representation of a precursor of the manipular tactics which would even-



Above: Bronze Italian pot-helmet, once crested, found near Ancona in the Picenum and now in the British Museum. These pot-helmets remained popular within the Picene and adjacent regions much later than in other areas of Italy. The resemblance between this helmet and those shown on the Certosa Situla is obvious. (Photo: N.V. Sekunda)

This example of a 'Disc and stud' helmet is similar to those worn by the first group of warriors on the Certosa Situla. It is from Slovenia, within the Venetic-Illyrian cultural region. (Photo: Narodni muzej, Ljubljana)



tually spread to Rome at the end of the fourth century BC. It should be noted, however, that the varied and multiple battle-line which is shown on the Certosa Situla is not repeated on other surviving examples of decorated bronze-work left by the Veneto-Illyrian culture showing military scenes.

### Samnite warfare

Since the Gauls did not cause the Romans to change their formation and weapons it is almost certain that the Samnites were responsible. Indeed this was believed by some ancient authors. Athenaeus wrote that 'they learned the use of the *scutum* from the Samnites'; Sallust said that 'our ancestors . . . took their offensive and defensive weapons from the Samnites'; and the author of the *Ineditum Vaticanum* wrote: 'We did not have the traditional Samnite *scutum* nor did we have the *pilum*. But we fought with round shields and spears; nor were we strong in cavalry either but all or the greater part of the Roman army was

infantry. But when we became involved in a war with the Samnites we were equipped with the *scutum* and the *pilum* and had forced ourselves to fight as cavalry; so with foreign weapons and copied tactics we enslaved those who had developed a conceited pride in themselves.'

The explanation is clear. In their wars against the Samnites over the rough terrain of central southern Italy the hoplite phalanx proved to be much less effective than the more flexible formation used by the Samnites. The latter employed a large number of smaller and more manoeuvrable units (maniples) of soldiers equipped with heavy javelins and the *scutum*.

Fortunately two passages in Livy contain much valuable information on the dress, equipment and organization of the Samnite army during the last two Samnite Wars. This information is frequently dismissed as extremely untrustworthy by modern historians. In what follows, however, we have assumed that what Livy tells us, although distorted, especially



This detailed photograph of a cist from Praeneste now in Berlin presumably shows a Samnite infantryman attacking a dismounted cavalryman, possibly an Etruscan. The Samnite carries a scutum, a sword and a javelin, and wears a single greave on his left leg. This representation is highly important in providing archaeological evidence to support the contention of Livy and others that the Samnites fought with a single greave. (Photo: Berlin, Staatliche Museen)

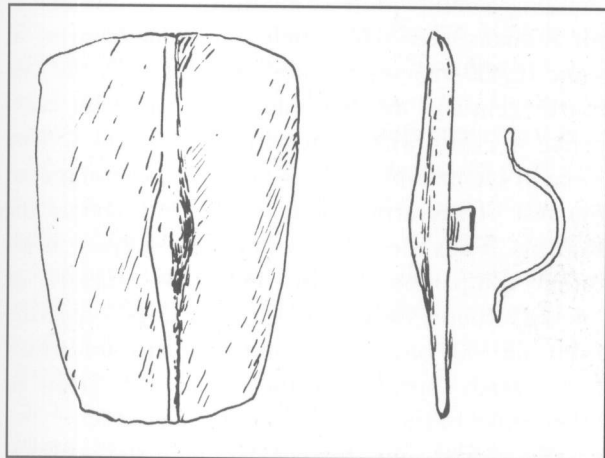
in its chronology, is ultimately based on a relatively sound near-contemporary source. This information allows us to reconstruct a quite detailed picture of the Samnite army and perhaps, therefore, sheds some light on the versions of their tactics and equipment adopted by the Romans.

Livy tells us that in 310 the Samnite infantry all carried trapezoidal *scuta* which were wider at the top, in order to protect the breast and shoulders, with a level or flat top (i.e. not curving or oval in shape), but somewhat narrower at the bottom in order to allow better mobility. According to Livy the Samnite warriors wore a 'sponge' (*spongia*) in front of their breast. Clearly what is being described is the characteristic chest-protector (*pectorale*) widely worn during the fourth century, although it is a complete mystery why the word *spongia* is used. The left leg alone was covered with a greave. They wore crested helmets to make them appear taller. Spears are not mentioned, but if these Samnites were fighting in manipular formation the weapon used may have varied from maniple to maniple, some carrying a pair of javelins, others carrying spears.

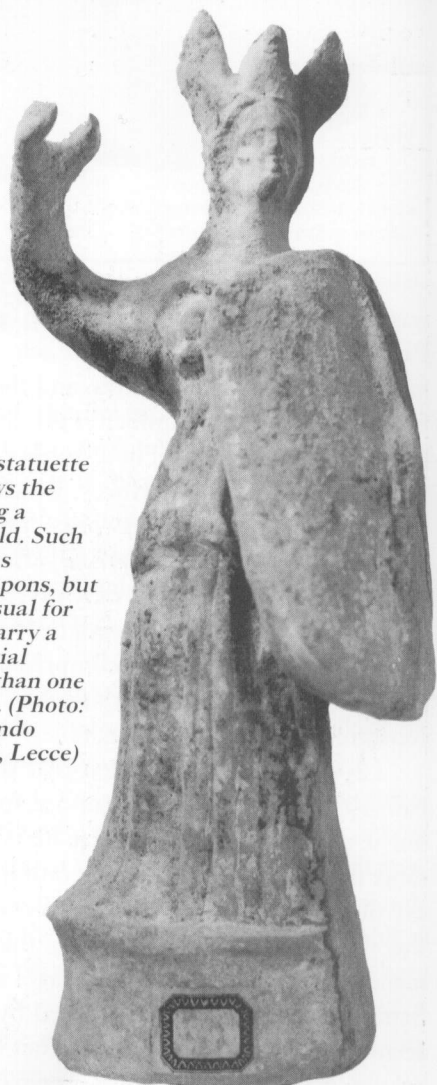
Livy also tells us that the Samnite infantry was divided into two corps, each of which he calls an *exercitus* (usually translated as 'army'). The first wore tunics of bleached white linen and shields inlaid with silver. The other wore parti-coloured tunics and had shields inlaid with gold. An uncertain restoration in this section of Livy would also give baldrics and sheaths in silver to the first corps and in gold to the second. The first *exercitus* was given the post of honour on the right wing, while the second was drawn up on the left. Livy adds that it was the

custom of the Samnites to consecrate themselves before battle, and this is why they dressed themselves in white and whitened their arms, for white was the colour of religious purity.

Further information is added by a second passage in Livy which describes the organization of the Samnite army before the Battle of Aquilonia in 293. A levy was held throughout Samnium, which, when concentrated at Aquilonia, amounted to 40,000 men. All who did not report for duty were to forfeit their life to Jupiter. In the middle of the camp an area some 60 metres (200 feet) in all directions was enclosed with wicker hurdles and was roofed over with linen. Here a sacrifice was made by Ovius Paccius according to ancient rites preserved on linen rolls in his possession. Livy mentions that the Samnite army



*This terracotta statuette of Minerva shows the goddess carrying a trapezoidal shield. Such shields existed as gladiatorial weapons, but it would be unusual for the goddess to carry a purely gladiatorial weapon, rather than one also used in war. (Photo: Museo 'Sigismondo Castromediano', Lecce)*





Gladiatorial relief from Venafrò, dating from circa 50 BC, now walled in the entrance to the Palazzo Cimorelli. The right half of the lower register shows a fight between a 'Julian' Bassus and a 'Cassian' Chrestus. Bassus holds a 'trapezoidal' scutum. (Photo: Istituto Archeologico Germanico, Rome: Neg. Rom 31.3001; 75.2762)

was commanded by an *imperator*, perhaps Oivus Paccius himself. The *imperator* selected ten of the most eminent of the Samnites, and they then chose a further ten, until the number of the chosen band rose to 16,000 in strength. These soldiers then swore a solemn oath over the sacrifices, which were guarded by centurions with drawn swords. These were called the 'Linen Legion' (*legio linteata*) after the linen roof of the enclosure, and they were given splendid arms and crested helmets to distinguish them from the rest. The other *exercitus* comprised 'a little over twenty thousand men'; presumably 24,000 men to conform with the total of 40,000.

Livy gives the impression that the *legio linteata* had just been formed in the camp at Aquilonia in 293, but it is perfectly obvious that he is describing the same sacred band as was in operation in 310. On the eve of the Battle of Aquilonia Livy puts a speech in the mouth of Lucius Papirius, the Roman commander, who tells us that 'long ago' a silver and gilt Samnite army had been destroyed by his father. He seems to be referring to the conflict of 310 some 17 years previously. The whole speech, however, is best

regarded as a rhetorical embellishment by Livy. In the same passage he refers to the Samnite shields as being painted as well as silvered. This perhaps implies that the shields of the *legio linteata* were painted white, and only the metal components were decorated in silver. It seems obvious that Livy is manipulating the primary source which was available to him, and that the *legio linteata* was not a creation made just for the campaign of 293, but was rather a long-standing Samnite military institution. Assuming that the Romans were able to field a four-legion army of some 16,000 men or thereabouts regularly in the late fourth century, the Samnites may have felt compelled to create within their military system an élite force of comparable size, given better training than the rest of the army, to take the field against the Romans. Thus the *legio linteata* was a military institution comparable to the bodies of *epilektoi*, or 'picked' troops, formed by Greek armies, especially from the 360s onwards; a military institution which had already spread to the Syracusan army of Dionysius I in the early years of the century.

By adding some further details to the informa-



This famous pectorale, of the trilobate variety, was found in North Africa, where it had evidently been brought by an Italian mercenary in Carthaginian service. Colour photographs of the cuirass show it to be plated in white metal, either

silver or tin, which suggests the possibility that it was an heirloom, and may even originally have been manufactured for use by a member of the *legio linteata*. A number of the decorative motifs, such as the bucranium fixing the shoulder plate, or the

lintel decorated with paterae (flat bowls for sacrificial libations), supported by the columns of a temple colonnade, are concerned with sacrifice and perhaps refer to the sacrifice and oath taken by members of the *legio linteata*. The principal

decorative feature is a head of Minerva wearing a triple-crested helmet, which follows Greek representations of Athena Promachos dating to the late fourth century. (Photo: Musée National de Bardo, Tunis)

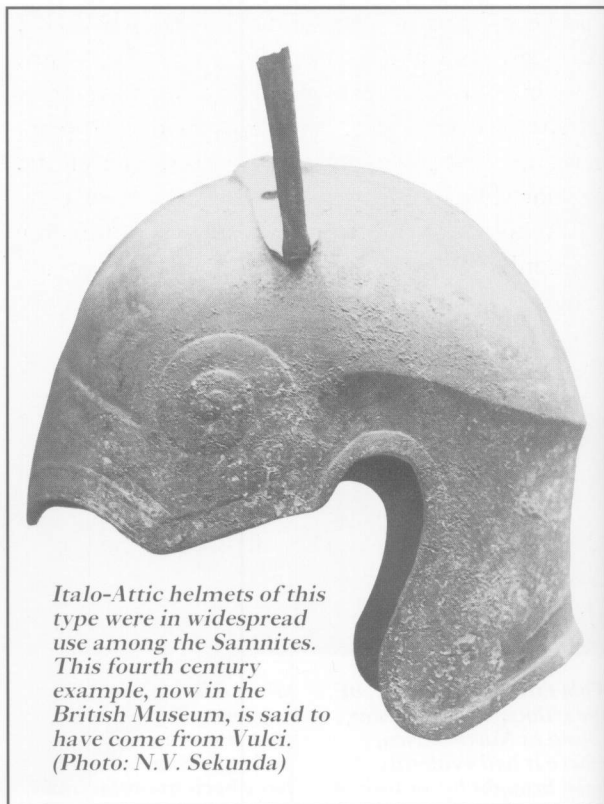
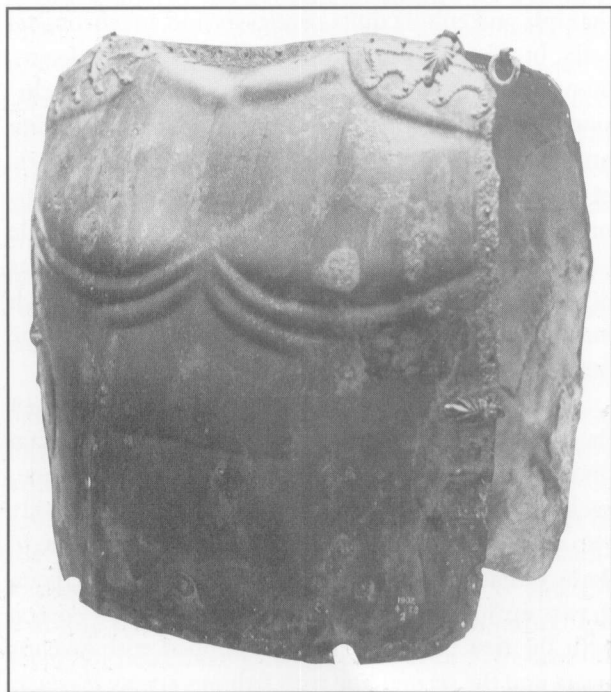
tion imparted by Livy in these two passages, we can suggest a possible organizational structure for the *legio linteata*. The total citizen levy of the Samnite people which Livy mentions corresponds to the total citizen body (*touto*) of the Samnites, and the officer whom Livy calls an *imperator* may have been the chief civil and military magistrate of the Samnites, the *meddix tuticus*. Beneath him, the ten officers first selected may have been termed *meddices minores*, each in charge of a force of 1,600 *manipulares*, though we have no idea what these sub-units may have been called. Within his description of the events of 293 BC, Livy mentions 'the linen cohorts', and twenty cohorts of Samnites, each of about 400 men. Samnite cohorts of unspecified size are also mentioned in other passages. Elsewhere Livy mentions eight cohorts of Hernici operating in 362 BC, each numbering 400 men: that is, a total force of 3,200 men, double the size of one sub-unit of the *legio linteata*. Elsewhere in his *Histories* Livy uses terms such as

maniple and cohort quite carelessly and anachronistically, but, given the combined weight of the passages mentioned above, it is difficult to avoid the conclusion that each of the ten divisions of the *legio linteata* numbering 1,600 men were divided into four cohorts of 400. Livy also mentions centurions in his description of the oath-taking, so it would be reasonable further to suggest that each of these cohorts was divided into two maniples and four centuries, each maniple having a *centurio prior* and *posterior* along the lines of later Roman practice.

The other *exercitus*, comprising the remainder of the Samnite infantry, would presumably have been divided along similar lines into 15 units of 1,600 men, each with its cohorts and maniples. If there were only two maniples to the cohort, it would be reasonable to deduce that the Samnite battle-line would have been drawn up into two lines of maniples, an *acies duplex*, with the first line of maniples equipped with javelins (*pila*), and the second line with fighting-spears (*hastae*).

## The Manipular army in Livy

Livy (8.8) describes a Roman manipular formation drawn up in five lines. The first is composed of 15 maniples of *hastati* each with an extra 20 light-armed soldiers. The second line also has 15 maniples, this time of *principes*. Behind these stand in sequence the *triarii*, *rorarii*, and *accensi*. Livy gives few details concerning the equipment except that the light-armed *rorarii* and *accensi* have the javelin and spear, while the *triarii* have the *hasta*: all are armed with the *scutum*. We are left to assume that the *hastati* and *principes* were armed with the *pilum*. Nor is his description of tactical deployment complete. Livy speaks of the first three lines engaging the enemy one after the other, but he assigns no specific role to the *rorarii* and *accensi*. Although there is a certain internal logic in Livy's account, which makes a literal interpretation of his manipular system perfectly possible, severe doubts arise concerning the historicity of Livy's description. We know that *rorarii* was an early name for light-armed troops and that *accensi* were non-combatant baggage attendants (Varro). Neither of these pieces of information fits with Livy's description. A recent historian writing on this subject has said: 'This whole farrago appears as an antiquarian reconstruction, concocted out of scat-



*Italo-Attic helmets of this type were in widespread use among the Samnites. This fourth century example, now in the British Museum, is said to have come from Vulci. (Photo: N.V. Sekunda)*

tered pieces of information and misinformation, mostly to do with the manipular army. One of its underlying features seems to be a strained attempt to establish some sort of relation between the new military order and the five categories of the census classification.'

Livy's account must surely be rejected. We should rather assume that the Roman form of the manipular system had just three lines (of *hastati*, *principes* and *triarii*), plus attached light infantry (*rorarii*), from its very beginning. Elsewhere we have also assumed that it had roughly the same complement as the later Republican legion described by Polybius. It seems that Livy is basing his account on a source which describes how the *rorarii* retire behind the *triarii* following the initial phases of the battle,

*The other type of pectorale most commonly in use among the Samnites and other Oscan peoples of south central Italy was the square variety, and it was this variety of pectoral which was later selected for use by the Roman*

*army. This example, now in the British Museum, is south Italian and has been dated to c. 375-325 BC. Note the crude decoration in imitation of human musculature. (Photo: N.V. Sekunda).*

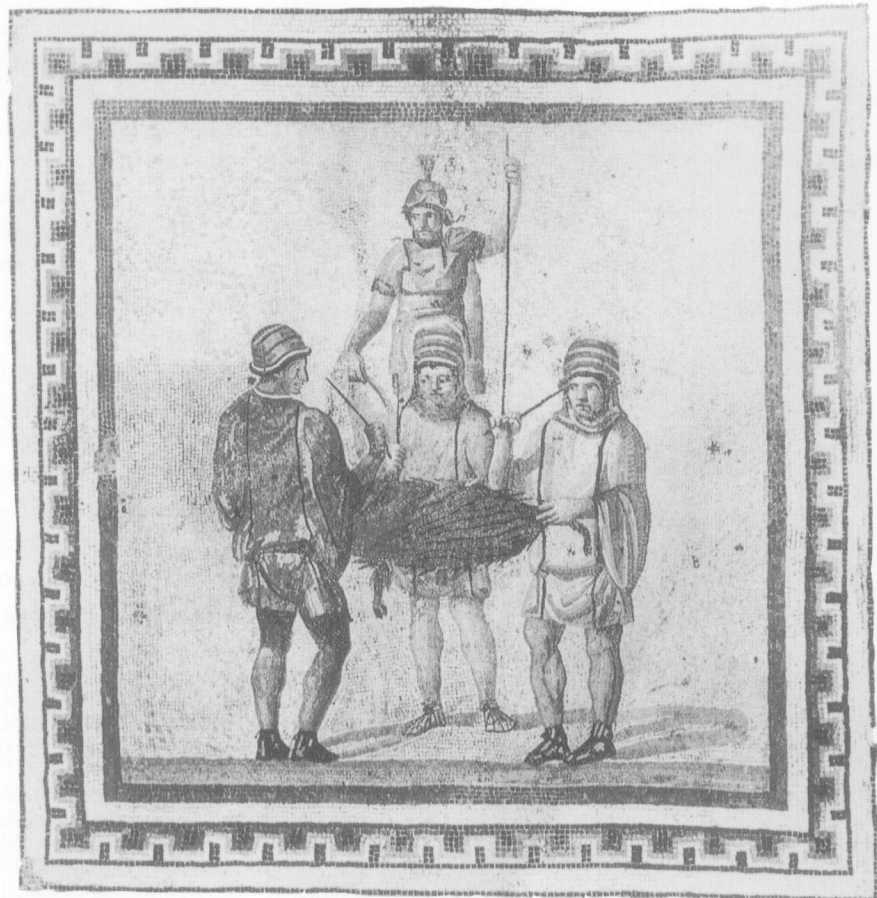
and he is trying to integrate the *accensi*, who as baggage-carriers would stand behind the whole battle-line, into his account. As he is making the *accensi* combatants, Livy has to invent weapons for them to carry and consequently he has created an entirely spurious five-line formation with three rear lines.

Where we can suggest that the earlier form of the manipular legion differed from that of the second century BC is in the relative importance of the *pilum* and the *hasta*. In his account of the Battle of Beneventum (275 BC) Dionysius writes that 'those who fight in close combat with cavalry spears (i.e. *hastae*) held in the middle with both hands and who frequently achieve success in battle are called *principes* by the Romans'. Now we have good reason to believe that Dionysius' ultimate source at this point was a writer contemporary with the events of the Pyrrhic war, and it may even have been Pyrrhus' own court historian Proxenus. This makes the text unusually reliable and leads to the conclusion that in 275 the *principes* still used a thrusting spear (as the

*triarii* did even in the mid second century BC) and had not yet converted to the *pilum*. (E. Rawson, 'The Literary Sources for the Pre-Marian Army', *Papers of the British School at Rome* 39 (1971) 13–31.)

In the late fourth century BC, when manipular weapons and tactics were first introduced, it seems that the heavy javelin, later called a *pilum*, was called the *hasta velitaris*, and that the term *hasta* only came to be applied exclusively to the long fighting spear at a later date. Consequently, in the earliest Roman manipular formation, the only line which used the *hasta velitaris* was the first, and these were consequently given the name *hastati* – confusing to us who are more familiar with the later Republican army described by Polybius, in which only the last rank of *triarii* used the *hasta*. Thus in the earliest form of the manipular army only the first line comprising the *hastati* used the *pilum*. The *hastati*, as Dionysius implies, would have been used to break up the enemy formation before the *principes* moved in to secure a final victory with their long spears.

It has been suggested that this mosaic copies an original third century painting. It shows the sacrifice of a pig taking place inside a temple of Mars before a statue of the god. Three priests strike the carcass of the animal with sticks. The scene probably shows the solemnization of an oath of alliance, and the general idea seems to be that if the oath is broken, let the perpetrator be struck down by the god, 'As I strike this pig'. The scene has been compared with a passage in Livy where the carcass of a sacrificed pig is struck with flints rather than sticks. The scene also confirms that a connection existed between swine and the war-god. (Photo: Museo Borghese, Rome)





# THE PLATES

## A: *The Earliest Roman Warriors, c. 700 BC*

Had Romulus and Remus existed, they may have looked like these two figures.

**A1** uses a helmet and shield based on those found in Esquiline Tomb 94. Tomb 94 also contained fragments of a chariot, including the iron tyres plus nails from the wheels, though these were insufficient to allow a restoration. Fragments of a wooden spear and iron spearhead were also found in Tomb 94, but were too decayed to enable recovery. Consequently the spear shown has been based on an example from Tomb 39 and the pectoral on one from Tomb 86. He carries a short sword of the 'Cuma' type found in Rome. We have no idea what personal dress may have looked like at this period in either Etruria or Latium, so these figures have been given rather coarse clothing decorated with a geometric pattern, as this was the dominating ornamental motif of the time. Whatever the precise form of dress, it would have been secured with bronze *fibulae*, which have

been recovered in quantity from a number of the warrior graves. Footwear of this period is a complete mystery. We have restored an ornamental boot of the Etruscan type, although representations of boots of this type with pointed toes are only present in Etruscan art c. 540–475 BC.

**A2** uses military equipment entirely based on material from Esquiline findgroup 98, with the exception of the helmet, longsword and scabbard. The helmet is based on that once in the Zschille Collection; the sword an example of 'Rocca di Marro' type from Rome, and the scabbard on material found elsewhere. In the foreground lies an Etruscan warrior, based on military equipment found in tombs in Tarquinia. The huts in the background follow a model of the early Iron Age settlement on the Capitoline which was based on the excavated remains of the period.

## B: *Roman Warrior Bands, seventh century BC*

**B1** attempts to represent the appearance of a warrior in the seventh century, using the dress recorded for the Saliî priests in the later Republican era. The decorated purple tunic known to have been worn by the Saliî in the late Republican and Imperial periods may have been somewhat richer than that worn by their warrior predecessors. The cloak (*trabea*) is, in this case, not worn around the shoulders, but is rather worn 'in the Gabinian manner' (*cinctus Gabinus*), in other words rolled up and worn wound around the waist and/or shoulders. This style reputedly spread to Rome from the town of Gabii 12 miles east, which was allied to Rome after 493, though the ultimate origin may have been Etruscan. The cloak has been shown decorated with scarlet stripes and a purple border. The pectoral is based on that from Esquiline Tomb 14 although this is a little early for the seventh century.

**B2** attempts to reconstruct the original dress of a *flamen* priest at this period. He wears the pointed



Detail from a red-figure crater in Leipzig dating to the first half of the fourth century, showing a Gallic horseman. Note the straight-bladed Celtic sword and the huge shield. The device painted onto the shield may be that of a particular war-band. The

horseman is most probably naked behind the shield. His horse seems to be decorated with some form of body-paint and with bands of phalerae hung around its neck. (Photo: Antikenmuseum, Universität Leipzig)

helmet from which the *apex* supposedly derived, and the rounded cloak known as a *laena*, of Etruscan origin but ultimately derived from the Greek cloak known as a *chlaina*. The priest is dressed in white; the colour of ritual purity suitable for his office. In later Republican and Imperial times the *flamines* wore a distinctive boot. The practice of indicating rank by distinctive shapes and decorative elements in footwear seems to have been Etruscan in origin and to have spread to Rome. The *flamen* is shown wearing white boots of a distinctive shape drawn from an Etruscan statuette.

### **C: Horatius at the Bridge, 508 BC**

Around 509 BC the last Etruscan king, Tarquinius Superbus, was expelled from Rome and appealed to the king of Clusium, Lars Porsenna, who may also have been head of the Etruscan League at this time, to restore him to the Roman throne. Porsenna marched on Rome and seized the Janiculum in a sudden attack; the way lay open to the rest of the city across the Tiber. Livy records a story that Horatius Cocles rushed to the bridge, together with Spurius Larcius and Titus Herminius, and together the three held back the whole Etruscan army, while behind them work continued feverishly on the demolition of the bridge. When scarcely anything was left of the bridge Horatius sent back the two others and carried on the fight alone. With a crash and a deafening shout from the Romans the bridge finally fell. Horatius invoked Father Tiber, leaped into the river, and swam to the bank and safety.

The three figures are based on polychrome representations of hoplites dating to the late sixth or early fifth centuries BC.

**C1** is based on a fragment from the central acroterium of the Sassi Caduti temple at Falerii Veteres, and so represents an Etruscan hoplite of the period.

**C2** is based on the painted terracotta body of an Amazon from the pediment of a temple on the Esquiline hill. It is highly debatable whether this decorated fragment can be taken as an accurate reflection of the dress of a Roman warrior of the early fifth century. The style and decoration of the cuirass is of a type normally found specifically on representations of Amazons, and is not really appropriate for a male Roman warrior. Furthermore the sculpture is of



*This Roman gold stater, dating to 218 BC, shows on its reverse Italian and Roman generals swearing an oath of alliance over a pig (J.P.C. Kent and Max and Albert Hirmer, Roman Coins (1978) no. 14,*

*pl. 7). Note the musculi-worn by the Roman general, and the decorative point to his lance, which may be a badge of his rank. (Photo: Hirmer Fotoarchiv, München)*

Greek workmanship, and the representational style is clearly Greek. Nevertheless we have incorporated the sculpture within this plate, in order to use all sources of representational evidence in colour for the period.

**C3** is based on a fragment of a fictile plaque from the temple of Mater Matuta in Satricum. Latin hoplites are not known to have fought as allies of Lars Porsenna, but he is known to have used mercenary troops. One piece of evidence for this is the story of Mucius Scaevola who attempted to assassinate the Etruscan king in his camp, but by mistake killed the king's scribe, who was paying out money to the army.

### **D: The Venetic Fighting System, fifth century BC**

This plate is based on the figures from the Certosa Situla, representing the various components of the Venetic battle-line. As it would not be practicable to depict full scale maniples in any detail, we have shown the troop types as four single advancing lines.

The reconstruction of the shield of **D1** has not

been straightforward, as it is impossible to tell whether the main body of the shield shown is intended to be non-metallic, with only the rim and boss in bronze, or whether the whole shield is supposed to be covered in a bronze facing. Similarly with **D2** it is not clear whether the shields are non-metallic or covered in bronze sheeting. Here we have followed Peter Connolly in showing the shields as non-metallic but with bronze bosses.

**D3** has been shown with bronze hoplite shields. In the sixth century the Greek hoplite shield had a bronze rim, a bronze internal vertical handle for the elbow, and sometimes a bronze shield device attached to the front. The rest of the shield consisted of multiple layers of ox-hide. At the turn of the century,

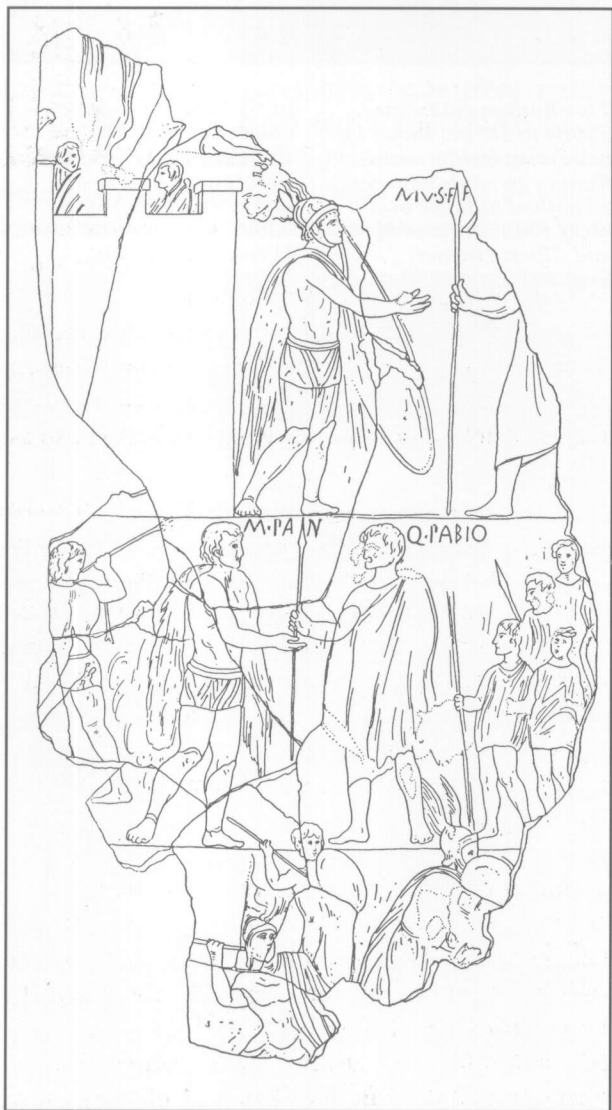
at a date which cannot be specified precisely, the entire shield becomes faced with a thin bronze sheet, stressed to give it strength. Thus we cannot be sure whether we should show these Venetic warriors with bronze-faced shields or not. These Venetic shields seem to be of local manufacture – the triangular decoration of the shield-rim is in stark contrast to the multiple cable pattern found on the overwhelming majority of hoplite shields manufactured on the Greek mainland. We have also given these hoplites bronze greaves, although these are not shown on the situla.

**D4** represents the group of Venetic axemen shown on the Certosa Situla. The precise details of the cuirass cannot be worked out from the situla, and we have interpreted the cuirass as being of different coloured heavy linen or other textile material, not unlike the Greek *spolas*. The situla as a whole conveys the impression that there was some standardization of dress and equipment, but this is surely just an artistic device. It is difficult to believe that there was anything approaching state issue of equipment and uniformity of dress among the Veneti at a date as early as this.

### **E: Roman Hoplites defeated by Celts, fourth century BC**

During the fourth century central Italy, including Latium, was subjected to periodic invasions by Gallic tribes. This plate depicts the rout of a Roman army during one of these battles.

**E1** is based on the fourth century ivory plaques from Praeneste, **E2** is based on the François Tomb and **E3** is based on the cist in St Petersburg. The uniformity



Fragment of a tomb-painting from the Esquiline possibly copying one of the series of historical frescoes painted by Fabius Pictor to decorate the Temple of Salus in 304. The Samnite general (left) is labelled as Marcus Fannius, the Roman as Q. Fabius; perhaps Q. Fabius Maximus Rullianus, dictator in 315. The scene may, therefore, represent the surrender of a Samnite city during this year. The Samnite wears a Montefortino helmet with

'wing' plumes at the side (pennae), a goat-skin cloak, a white subligaculum (lion-cloth) and two greaves, and carries a huge oval shield. The Roman general is shown carrying a long fighting hasta as a badge of his office, and is draped in his cloak (paludamentum). Behind him his cohorts praetoria is drawn up, carrying long hastae and dressed in white tunics, as was the practice in later Roman armies.

Two details taken from a Praenestine situla in Berlin. The situla as a whole shows a scene of sacrifice, attended by a Roman general carrying an eagle-standard, and a member of his entourage carrying a lituus; a badge of office of Etruscan origin. The lituus-bearer wears boots with ornamental folded-down tops, perhaps precursors of those worn by members of the equestrian order, and a pair of greaves. (Photo: Berlin, Staatliche Museen)



of the muscle-cuirasses and greaves is remarkable, and can perhaps be taken as evidence for at least some kind of standardization of military equipment within the Roman hoplite army in the fourth century. The red colour of the tunics is taken from the François Tomb painting. The shield device of *E2*, the head of a minotaur, is based on an Etruscan mirror, but the 'legionary' shield blazons of the other figures are loosely based on Republican coinage. The fourth century archaeological sources on which these figures are based invariably show Latin hoplites clean-shaven, which is something of a paradox, as tradition maintained that the first barbers only came to Rome in the third century BC.

*E4* is based on a red-figure crater in Leipzig, while *E5* is based on a third century wall painting from the Esquiline, now in the Palazzo dei Conservatori, Rome.

#### *F: Samnite Warriors, c. 293 BC*

This plate attempts a reconstruction of the dress which might have been worn by the Samnite army at the Battle of Aquilonia in 293.

*F1* attempts to reconstruct the appearance of a soldier of the *legio linteata*. All his weapons and dress are either whitened or silvered. The cuirass is based on

the Bardo cuirass, while the helmet (note the crest, mentioned by Livy) and the greave repeat the same decorative motifs found on the cuirass.

*F2*, together with various figures in the background, represents the balance of the Samnite army, dressed in their 'parti-coloured' tunics. The Samnite tunic was extremely short and curved at the bottom, so as to cover the genitalia, and had short sleeves, like a modern T-shirt. Bands of decorated material were applied at the shoulder, sleeves, hem, chest, etc., as in these examples, which are based on paintings of warriors from Paestan tombs and Lucanian vases. The decorative colours and motifs have been repeated on the shields. Whether their arms were truly gilded, or whether this is a hyperbole (for bronze weapons) of Livy or of his source, is not known. Some warriors carry spears, and some carry javelins based on the Vulci javelin.

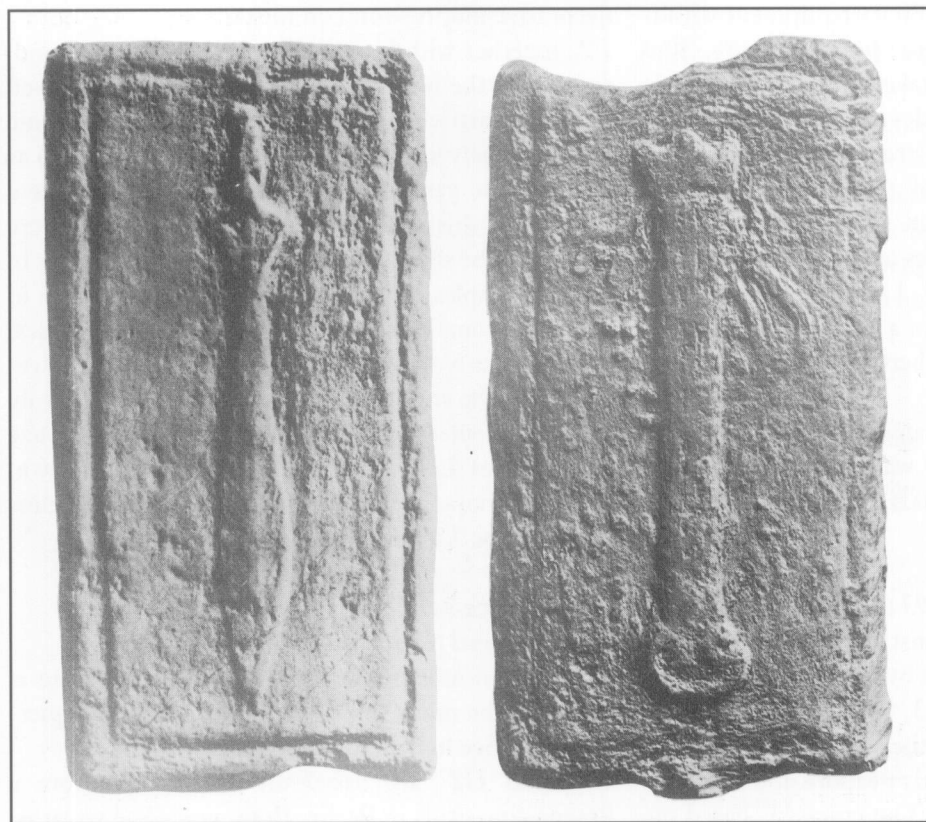
#### *G: Sacrifice establishing a treaty between Romans and Samnites*

The central and background scene in this plate is based on the mosaic in the Museo Borghese depicting a sacrifice held before Mars.

*G1* and *G2* are based on two figures from a Praenestine situla in Berlin. Both wear olive wreaths,



*This oval shield, shown on a Roman aes signatum coin of five Roman pounds which was struck about 280 BC, is presumably of the type carried by the Roman legionary of the period. There remains the possibility, however, that it may be shown as an item of booty.*



*A second example of Roman bronze bar coinage, also struck in the early third century, shows a sword and a scabbard with baldric, both of distinctively Greek type. Again the equipment shown is presumably Roman, and if so this coin confirms that the Spanish sword had not yet been adopted by the Roman army.*

probably symbols of victory in this context, which may be taken as an indication that the general is a *triumphator* celebrating his triumph, which would, in turn, explain his extremely complex dress. The literary sources are somewhat confused as to whether and under what circumstances Roman generals wore crimson or scarlet, which has made the reconstruction of the colours for these two figures somewhat problematical. We have in the end decided on scarlet with heavy gold embroidery. The general wears a cloak with a border measuring a palm's width, heavily embroidered in gold.

**G2** is based on the figure of the Samnite general Marcus Fannius from a historical painting found in a tomb on the Esquiline.

### **H: Roman Hastati fight one of Pyrrhus' elephants**

The Epirote war elephant is based on a contemporary representation of an elephant and its calf on a painted plate now in the Museo Nazionale di Villa Giulia. It is clear from the painting that the crew wear muscle-cuirasses (the naveal is quite clear on the driver's cuirass). Their tunics, as well as the housing of the elephant, are dark crimson. The helmets have a triple plume, most probably of white horsehair. The yellow-painted tower on the elephant's back (presum-

ably wooden) is protected on each side by a bronze hoplite shield, and is held in place by three thick chains.

The elephant is shown in conflict with a maniple of Roman *hastati*. The *hastati* are shown without muscle-cuirass, coat of mail, or *pectorale*. The tendency seems to have been for the *manipularii* of all three ranks to have become progressively more heavily equipped as time passed; thus in the late Republic all *manipularii* wore coats of mail. The Roman troops wear Montefortino helmets, and carry swords and shields based on *aes grave* coins. They have been supplied with a single greave on the leading leg, which has been based on those worn by the *lituus*-bearer shown on a Praenestine situla.

The legionaries of the Roman Imperial army are known to have worn tunics of a natural off-white colour. This 'uniformly' drab appearance may well have come about in the Roman army following its massive expansion in the middle of the fourth century, the mass of new Roman warriors repeatedly pressed into service choosing to clothe themselves in the cheapest undyed cloth. For similar reasons of cost the rapidly expanding armies of the Bourbon and Hapsburg monarchies adopted uniform clothing in cheap natural colours at the end of the 17th century of our era.



*Locri had at first supported Pyrrhus, but, when Rome confirmed her independence after the defeat of Pyrrhus, she*

*declared her loyalty to Rome on this coin, struck c. 274. Pistis 'loyalty' is here shown crowning Roma. Note the oval*

*shield, with rim, spine and boss, used by Roma. This archaeological evidence confirms that the scutum was used by*

*the Roman army by this date, and also gives us its precise size and appearance. (Photo: N.V. Sekunda)*