



IBM 64 MB 和 256 MB USB 2.0 存储钥匙

用户指南



IBM 64 MB 和 256 MB USB 2.0 存储钥匙

用户指南

第一版（2003 年 2 月）

© Copyright International Business Machines Corporation 2003. All rights reserved.

目录

前言	v
注册您的选件	v
第 1 章 介绍	1
第 2 章 安装要求	3
在 Windows Me、Windows 2000 或 Windows XP 中安装存储钥匙	3
在 Windows 98 中安装存储钥匙	3
在 Windows NT 中安装存储钥匙	4
第 3 章 MyKey	5
系统安装	5
安装	5
MyKey 定制	7
设置首选项	8
选择语言	9
隐藏 / 显示 (Hide/Show)	9
帮助 (Help)	9
关于 (About)	9
退出 (Exit)	9
MyKey 弹出式消息	10
存储钥匙控制台	10
LCD	10
按钮	11
个性化存储钥匙	12
MyKey 个性化图标 (MyKey Personal Icon)	13
MyKey 个性化声音 (MyKey Personal Sound)	13
MyKey 个性化标签 (MyKey Personal Label)	13
存储钥匙版本 (Memory Key Version)	13
高级功能	14
登录 / 注销保密区	14
启用 / 禁用写保护	14
同步选项	15
创建个人文件夹	16
附加功能	17
发送至存储钥匙驱动器	18
自动运行	18
故障诊断	19
常见问题解答 (FAQ)	19
联系我们	20
第 4 章 使用多语言 KeySafe™	21
系统要求	21

入门	21
创建保密区	21
使用保密区	23
注销保密区	24
定制设置	25
桌面	25
更改密码	26
更改保密区	27
常见问题解答 (FAQ)	28
第 5 章 使用 IBM Memory Key Boot Utility	31
系统安装要求	31
创建 IBM 引导存储钥匙	31
用 IBM 存储钥匙引导计算机	33
故障诊断	33
附录 A. Warranty information	35
Warranty period	35
Service and support	35
Warranty information on the World Wide Web	35
Online technical support	35
Telephone technical support	36
IBM Statement of Limited Warranty Z125-4753-06 8/2000	37
Part 1 - General Terms	37
Part 2 - Country-unique Terms	40
附录 B. European Union warranty information	47
附录 C. Notices	49
Trademarks	50
Federal Communications Commission (FCC) statement	50

前言

本手册包含用于安装和使用 IBM® 64 MB 和 256 MB USB 2.0 存储钥匙的说明。

您的选件包包含以下内容:

- 64 MB 或 256 MB USB 2.0 存储钥匙
- *IBM 64 MB and 256 MB USB 2.0 Memory Key CD*
- 《快速入门指南》

如果缺少上面列出的任何选件, 或它们已损坏, 请联系您的购买处。请确保保留您的购买凭证; 当您请求保修服务时, 可能需要此凭证。

可在 *IBM 64 MB and 256 MB USB 2.0 Memory Key CD* 上获得使用以下语言的《用户指南》:

- 英语
- 法语
- 德语
- 西班牙语
- 意大利语
- 巴西葡萄牙语
- 简体中文
- 繁体中文
- 日语

注册您的选件

感谢您购买 IBM 产品。请花点时间注册您的产品, 并向我们提供有助于 IBM 将来更好地为您服务的信息。您的反馈对于我们在开发对您相当重要的产品和服务, 以及寻找更好的方式以便与您沟通方面具有重要价值。请在以下 IBM Web 站点注册您的选件:

www.ibm.com/pc/register

IBM 将向您发送有关您所注册的产品信息和更新, 除非您在 Web 站点的调查表中表明您不希望接收进一步的信息。

第 1 章 介绍

IBM 64 MB 和 256 MB USB 2.0 存储钥匙是小型便携式 USB 存储设备，能够使您通过功能正常的 USB 端口在任何的笔记本电脑和台式系统间共享数据，而无需使用软盘。64 MB 和 256 MB 存储钥匙提供远大于 1.44 MB 的磁盘的容量，以便您存储文本、演示文稿、电子表格或多媒体文件。

本手册解释了 IBM 64 MB 和 256 MB USB 2.0 存储钥匙在 Microsoft® Windows® 98 SE、Microsoft Windows Millennium Edition (Me)、Microsoft Windows 2000 Professional 和 Windows XP 中的安装和使用。有关在 Microsoft Windows NT® Workstation 中安装存储钥匙的说明，请参考与此选件一起提供的 CD 上包含的自述文件 (README) 文件。

第 2 章 安装要求

在安装 IBM 64 MB 或 256 MB USB 2.0 存储钥匙之前，请确保您具备以下条件：

- 以下操作系统之一：
 - Windows 98
 - Windows Me
 - Windows 2000
 - Windows XP
 - Windows NT
- 可用的 USB 接口

如果要存储钥匙作为可引导设备使用，则必须具备以下可选项目。请参阅第 31 页的第 5 章，『使用 IBM Memory Key Boot Utility』。

- 支持可引导 USB 存储设备的 BIOS。如果不确定 BIOS 是否支持可引导的 USB 设备，请联系您计算机的制造商。如果需要，可能存在可用的更新。
- 随您的计算机或 BIOS 更新一起提供的 BIOS 文档（如果适用）。

在 Windows Me、Windows 2000 或 Windows XP 中安装存储钥匙

Windows Me、Windows 2000 和 Windows XP 具有对“USB 2.0 存储钥匙”的内置支持，而无需设备驱动程序。只需将“存储钥匙”连接到 USB 接口。现在“存储钥匙”就可以使用了，并显示为带有指定盘符（例如 E:）的可移动磁盘。

在 Windows 98 中安装存储钥匙

在“存储钥匙”能够使用之前，必须将 Windows 98 设备驱动程序文件安装到您的计算机上。要在 Windows 98 中安装“存储钥匙”设备驱动程序，请执行以下操作：

1. 将“存储钥匙”连接到 USB 接口。
2. 将打开“添加新硬件向导”窗口。
3. 在“添加新硬件向导”中单击下一步。
4. 选择“搜索该设备的最佳驱动程序”，然后单击下一步。
5. 插入随“存储钥匙”一起提供的 CD-ROM。
6. 选择 CD-ROM 并单击下一步。按屏幕上的指示信息进行操作。
7. 现在存储钥匙已准备就绪可以使用了，并在“我的电脑”窗口中显示为可移动磁盘。

注： 闪烁的发光二极管（LED）表示正在存取数据。当 LED 闪烁时请勿卸下此钥匙，否则可能会丢失数据文件。

在 Windows NT 中安装存储钥匙

请参考包含在 *IBM 64 MB and 256 MB USB 2.0 Memory Key CD* 上的《Windows NT 驱动程序用户手册》。

注: KeySafe 和 MyKey 应用程序在 Windows NT 中不受支持。

第 3 章 MyKey

MyKey 是使您能够通过“存储钥匙控制台 (Memroy Key console)”访问并定制“存储钥匙”的工具。消息和提示能在简短的 MyKey 安装、使用和定制过程中指导您，使您能将“存储钥匙”变得更个性化、更有趣和更易于使用。本章还包含了一些重要的常见问题解答 (FAQ)。

系统安装

您的计算机必须满足以下要求才能安装并使用 MyKey:

- Pentium® II 266MHz
- 1.7 MB 可用磁盘空间 (在 C 盘驱动器上)
- 操作系统: Windows 98 SE、Windows Me、Windows 2000 或 Windows XP (Windows 98 需要“存储器”设备驱动程序)
- MyKey 应用程序在 Windows NT® 中不受支持
- Windows 2000 和 XP 的管理员权限

要达到最佳性能，存储钥匙可以选择与支持 24 位真彩色深度的图形加速器一起使用。

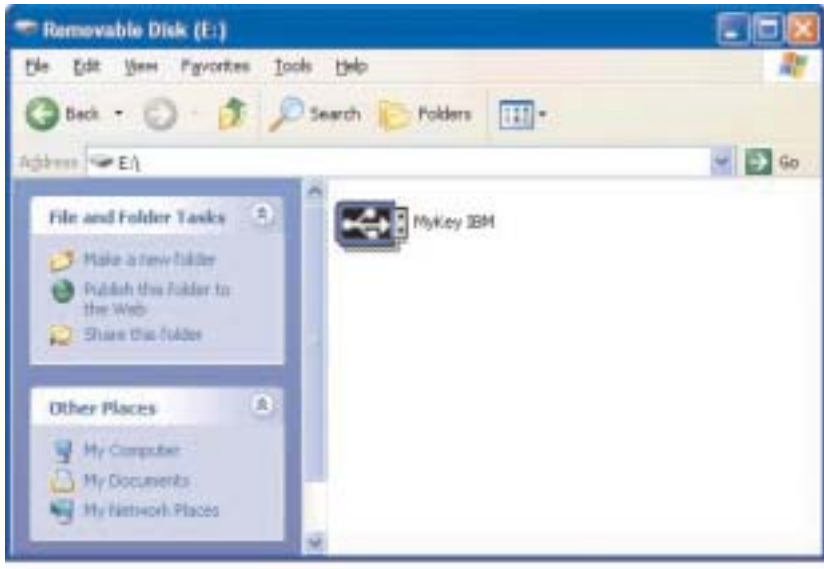
安装

MyKey 在 IBM 64 MB 和 256 MB 2.0 存储钥匙上受到支持。如果“存储钥匙”支持 MyKey，请确保您具有最新版本的 MyKey (可以从 www.pc.ibm.com/support 下载，在 64 MB 或 256 MB USB 2.0 Memory Key 下搜索)。

要安装 MyKey，请执行以下操作:

1. 插入随存储钥匙一起提供的 *IBM 64 MB and 256 MB USB 2.0 Memory Key CD*，并打开“Software”文件夹。

2. 双击 **MyKey** 图标。



3. 在安装屏幕上，如果要在桌面上添加 MyKey 的快捷方式则选中复选框。MyKey 和 Uninstall MyKey 的快捷方式自动在“开始”菜单中创建。单击 **Finish** 开始使用 MyKey 或单击 **Cancel** 放弃安装。

注：缺省情况下，MyKey 自动与 Windows 一起装入。可以从 Settings 窗口禁用此选项。



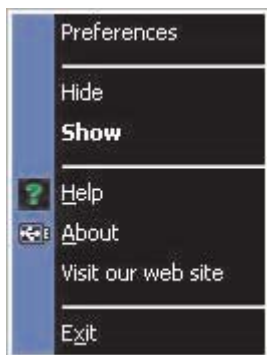
等待几分钟，直到 MyKey 图标添加到屏幕底部的系统托盘中，在时钟的旁边。使用此图标能最方便最快速地访问所有 MyKey 功能。



要卸载 MyKey 应用程序，执行开始 -> 全部程序 -> MyKey IBM -> Uninstall MyKey IBM。

MyKey 定制

要打开主菜单以访问各 MyKey 功能，右击托盘上的 MyKey 图标。此菜单中的每个选项在下面有所描述。



设置首选项

单击 **Preferences** 来设置 MyKey 首选项。单击任意选项以启用或禁用它。



Visual indication

每当您将“存储钥匙”插入计算机的 USB 接口中时，此图标显示“存储钥匙控制台”。

Audio indication

当您“存储钥匙”插入计算机的 USB 接口中时发出此声音。

Splash screen

当装入 MyKey 时，此屏幕显示。

Autorun process

此进程自动启动各种基于您在“存储钥匙”中设置的自动运行指示信息的应用程序，类似于 CD-ROM 自动运行。有关高级的自动运行功能，请参阅第 17 页的『附加功能』。

Load with Windows

缺省情况下，当 Windows 开始启用“存储钥匙”高级功能时装入 MyKey。如果禁用此功能，您将需要从计算机“开始”菜单手工启动 MyKey。

Create desktop shortcut

此操作在桌面上创建或删除 MyKey 快捷方式。

Always on top

缺省情况下，“存储钥匙控制台”浮动在所有窗口前面以便快速且方便的访问。如果禁用此功能，则“存储钥匙控制台”变成常规窗口。

选择语言

要选择首选语言，请执行以下操作：

1. 选择首选语言。受支持的语言是英语、法语、意大利语、德语、葡萄牙语、中文（繁体或简体）或日语。只有受支持的语言才显示在组合框中。所选语言的正确显示取决于您使用的 Windows 版本以及您选择的语言环境（控制面板 -> 区域设置）。如果 Windows 不支持您选择的语言，则显示“?”而非语言名称。
2. 请确保您阅读了显示在语言选择组合框旁边的欢迎消息。如果您可以阅读此消息，则单击 **OK** 来执行语言更改。所有的屏幕快照和文本将根据所选的语言更改。

隐藏 / 显示 (Hide/Show)

单击 **Hide** 或 **Show** 来关闭或显示“存储钥匙控制台”屏幕。

帮助 (Help)

此选项启动 IBM 支持站点，在那里您将能够搜索有关“存储钥匙”及其应用程序的信息。

关于 (About)

此选项提供有关当前版本的信息。

退出 (Exit)

当退出 MyKey 时，“存储钥匙”快速访问和高级功能遭到禁用。

MyKey 弹出式消息

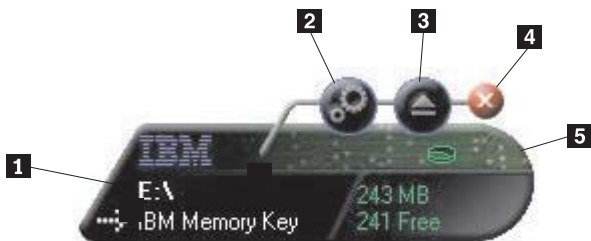
MyKey 使用弹出式消息（如下显示）来提供信息或通知您“存储钥匙”事件。这类消息在几秒后自动消失，或您可以单击它以立即将它关闭。



存储钥匙控制台

“存储钥匙控制台”使您能够访问“存储钥匙”以存储并检索文件、启动已安装的应用程序以及定制“存储钥匙”。

“存储钥匙控制台”显示“存储钥匙”日志、“存储钥匙”盘符和“存储钥匙”标签。要用您个人的图标或标签更改此显示，请参阅第 13 页的『MyKey 个性化图标 (MyKey Personal Icon)』。要移动“存储钥匙控制台”，在其中间任何地方单击并按住鼠标左键，将它拖到另一个位置，然后释放鼠标左键。



- 1 浏览
- 2 工具
- 3 弹出

- 4 关闭
- 5 LCD 显示器

LCD

液晶显示器 (LCD) 显示了“存储钥匙”的总容量和可用空间。当总磁盘空间的 5% 或更少可用时，可用空间指示灯变成红色。

图 8 中显示的 LCD 显示器：“保密区指示”指明您是否已经通过使用 KeySafe 登录到“保密区”。LCD 显示器指示您的“存储钥匙”是否是写保护的。有关写保护的进一步详细信息，请参阅第 14 页的『启用/禁用写保护』。



保密区指示



写保护指示

按钮

单击以下显示的任意按钮来启用它们。

工具 (Tools)

此 **Tools** 按钮打开“存储钥匙控制台”菜单。此菜单包含“存储钥匙控制台”设置选项（请参阅第 10 页的『存储钥匙控制台』）、高级功能（比如同步）以及个人文件夹。

浏览 (Browse)

单击“存储钥匙”浏览按钮以在“Windows 资源管理器”中打开“存储钥匙”驱动器并访问您所有的文件（那些在“保密区”受保护的文件以及公共文件）。

关闭 (X)

单击 **X** 来关闭“存储钥匙控制台”。控制台会在托盘图标中消失，将显示消息“Exiting Memory Key by Clicking X”，提示您该程序将继续在任务栏中运行。当

您以这种方式退出时不想显示这条消息，请单击复选框。



要重新打开“存储钥匙控制台”，双击托盘图标或从 MyKey 菜单选择 **Show**（请参阅第 7 页的『MyKey 定制』）。

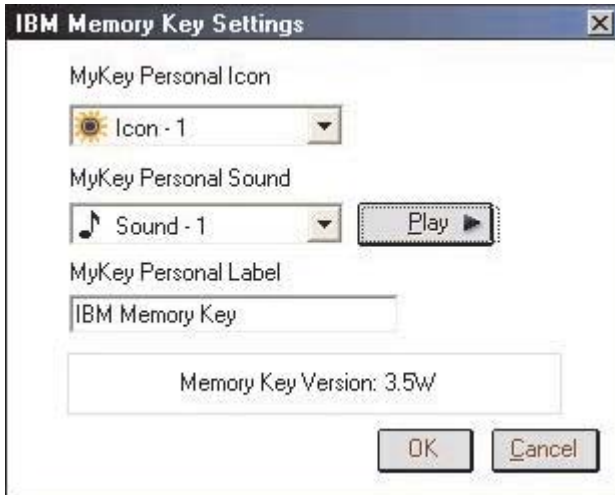
弹出 (Eject)

Eject 按钮帮助您卸下“存储钥匙”之前确保存储在它上面的所有数据的完整性。单击 **Eject**，等待安全卸下信息，然后卸下“存储钥匙”。对于 Windows 2000 和 Windows XP 以外的所有操作系统，也可以选择使用托盘菜单中的绿色键头来卸下“存储钥匙”。

警告： 不使用“弹出”按钮或绿色箭头卸下“存储钥匙”将导致数据的丢失！

个性化存储钥匙

要用您自己的图标、特殊的声音或自己的标签来个性化“存储钥匙”，请单击“存储钥匙控制台”上的 **Tools** 按钮并选择 **Settings**（请参阅第 7 页的『MyKey 定制』）。显示 Memory Key Settings 窗口。



MyKey 个性化图标 (MyKey Personal Icon)

要更改缺省图标，请打开 MyKey Personal Icon 组合框并从这些选项中选择：

- 选择包含于 MyKey 的 11 个图标中的任意一个。
- 通过浏览您创建的或要从 Web 下载的文件来选择一个图标文件。

单击 **OK** 应用此更改。

注：如果“存储钥匙”是写保护的，则此操作将失败。

MyKey 个性化声音 (MyKey Personal Sound)

要更改缺省声音，请打开 MyKey Personal Sound 组合框并从这些选项中选择：

- 选择包含于 MyKey 的 10 种声音中的任意一个。
- 通过浏览您创建的或要从 Web 下载的文件来选择一个声音文件。可以通过单击 **Play** 来收听您选择的任何声音。单击 **OK** 应用此更改。

注：如果“存储钥匙”是写保护的，则此操作将失败。

MyKey 个性化标签 (MyKey Personal Label)

要个性化“存储钥匙”并简化内容标识，请输入个性化标签，比如您的名字或类别（最多 14 个字符）来标识“存储钥匙”的内容。

存储钥匙版本 (Memory Key Version)

您的“存储钥匙”版本是 Memory Key Preferences 窗口中列出的最后一项。如果您要联系“技术支持”获取帮助，您将需要此信息。

高级功能

当 MyKey 运行时，可以访问许多高级功能，这使“存储钥匙”更易使用。单击 **Tools**，然后单击 **Advanced Features** 菜单中的选项。本节描述这些功能。



登录 / 注销保密区

如果使用 KeySafe 在“存储钥匙”上创建了“保密区”，则可以通过在 Login Privacy Zone 窗口提供正确的密码方便地登录 / 注销这个区域。在第五次登录尝试失败后，请安全地弹出“存储钥匙”，重新将它插入托盘，验证您的密码，然后再再次尝试登录。

在成功登录到“保密区”后，窗口中的文本更改为 Logout Privacy Zone。要注销，只要单击 **Advanced Features** 菜单中的这个选项即可。



启用 / 禁用写保护

当将“存储钥匙”插入安全性和完整性都不保证的计算机时要防止它遭病毒侵入或丢失数据，MeKey 使您能够写保护“存储钥匙”。这将防止受保护的文件被删除、创建或修改。

同步选项

MyKey 同步选项加快并简化您在两台或更多计算机间的同步进程，或仅备份文件。可用的同步选项包含：

- **Folder:** 此选项同步所有的文件夹和子文件夹。
- **My Favorites:** 此选项同步计算机上的 My Favorites（收藏夹）文件夹和“存储钥匙”上的 Memory Key Favorites 文件夹。
- **My Documents:** 此选项同步计算机上的 My Documents（我的文档）文件夹和“存储钥匙”上的 Memory Key Documents 文件夹。

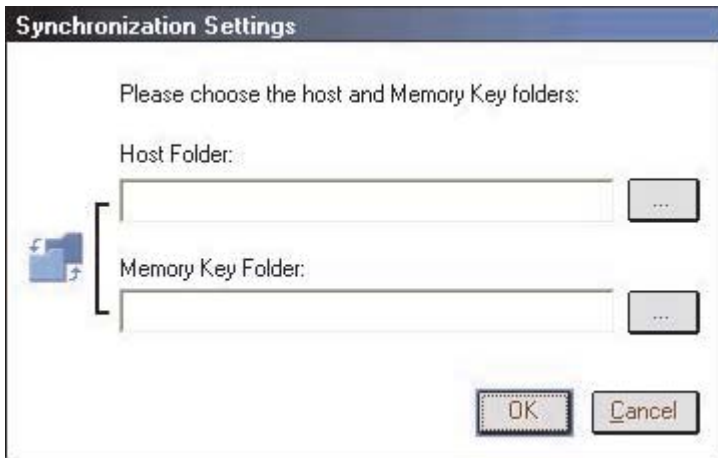
首次文件夹使用

要启用文件夹同步（第一次使用此功能时），请按照以下步骤操作：

1. 从 MyKey Console Tools 菜单选择 **Synchronize Folders**。您在新计算机上或用新“存储钥匙”首次使用同步功能时，将打开 Synchronization Settings 窗口。
2. 选择您要同步的文件夹。第一个文件夹必须是现有的本地文件夹。第二个文件夹必须是现有的“存储钥匙”文件夹。

注：如果在本地和“存储钥匙”文件夹中存在相同的文件，则当您首次尝试同步这两个文件时，MyKey 将不知道哪个文件是最新的版本。所以，请确保指定不同的名称。

3. 单击 **OK** 启动同步进程或单击 **Cancel** 退出。

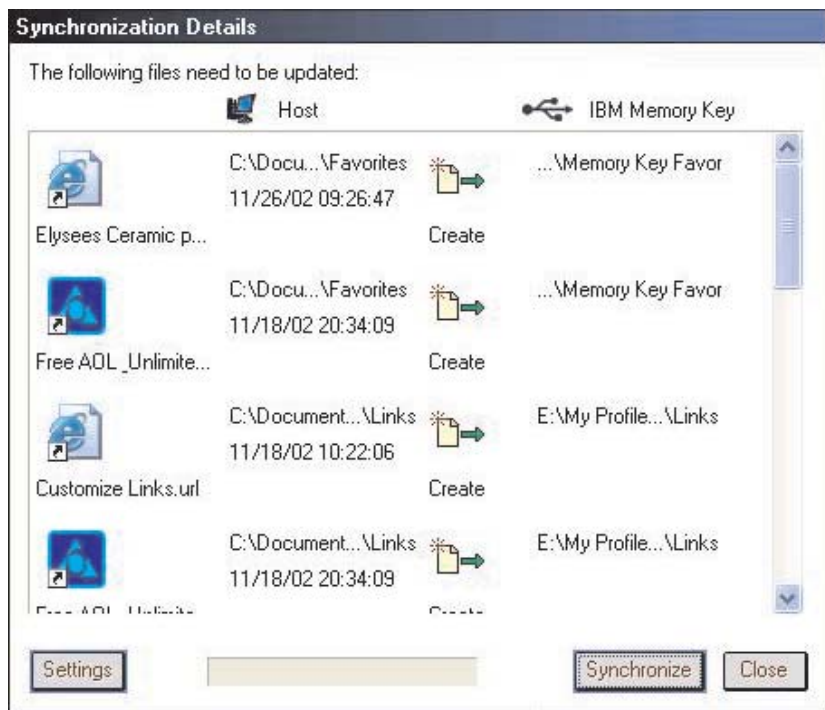


后续文件夹使用

在选择了要同步的文件夹后，请按照以下步骤操作：

1. 从 MyKey Console Tools 菜单选择 **Synchronize Folders**。此操作打开 Synchronization Details 窗口。显示必需的操作列表，等待您的核准。
2. 单击 **Settings** 来访问 / 更改显示的设置。

- 单击 **Synchronize** 来授权所有的文件操作（不能选择部分列表）。



- 如果在文件操作中发生错误（例如，磁盘已满或具有错误的路径或文件），则显示错误消息。单击 **OK** 继续同步剩余的文件或单击 **Cancel** 停止该进程。
- 当显示指示同步完成的消息时，单击 **OK**。

文件夹同步规则

以下规则适用于同步进程:

- 新文件:** 如果在任何文件夹中创建了新文件，MyKey 使您能够在其它一个或多个文件夹中创建相同的文件。
- 已删除文件:** 如果在任何文件夹中删除了文件，MyKey 使您能够在其它一个或多个文件夹中删除此文件。
- 修改的文件:** 如果在任何文件夹中修改了文件，MyKey 使您能够在其它一个或多个文件夹中替换此文件。如果在所有文件夹中修改了此文件，MyKey 使您能够跳过此文件而无需执行任何操作。
- 重命名的文件:** 重命名文件等同于删除它，然后创建一个新的文件。所以，此处适用“已删除文件”的规则。

创建个人文件夹

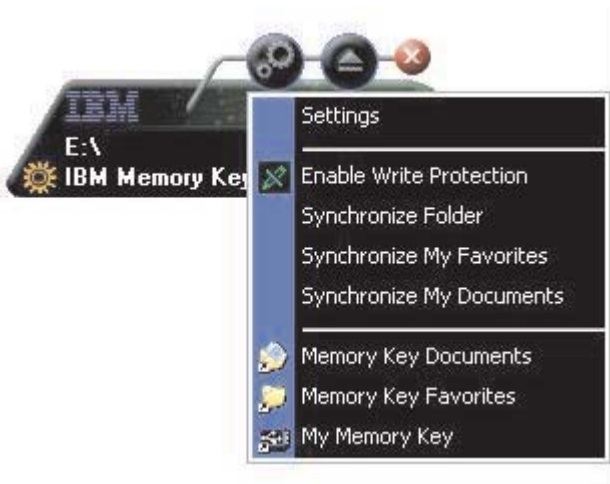
个人文件夹是帮助您分类或组织文件以能进行快速检索的文件夹。要创建个人文件夹，请按照以下步骤操作:

1. 单击 **OK** 确认要创建个人文件夹。



创建以下目录:

- My Memory Key, 类似于“桌面”, 存储了您频繁访问的一般文件。
 - Memory Key Documents, 类似于“我的文档”文件夹, 存储了工作文件。此文件夹存储来自 Synchronize My Documents 操作的文件。
 - Memory Key Favorites, 类似于“收藏夹”, 存储了各种收藏页。此文件夹存储来自 Synchronize My Favorites 操作的文件。
2. 要访问个人文件夹中的任何文件, 您可以执行以下操作:
 - 从“Windows 资源管理器”打开 My Profile (我的配置) 文件夹。
 - 单击“存储钥匙控制台”上的 **Tools** 来显示并访问文件。

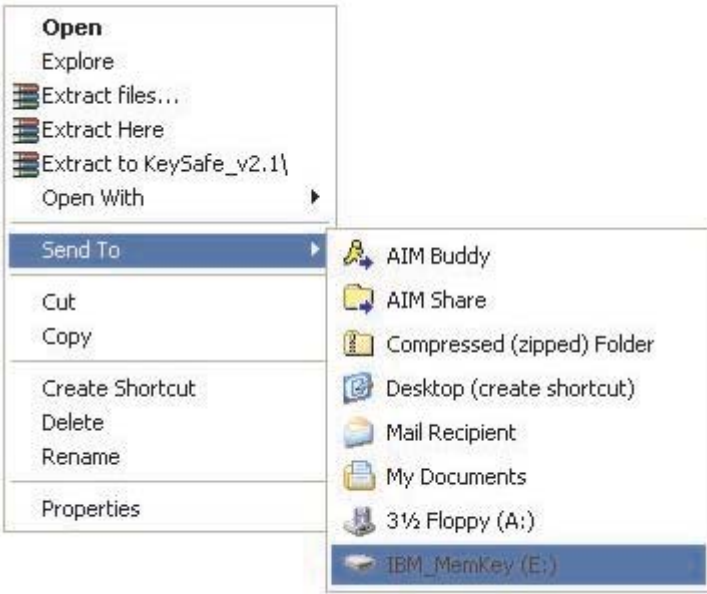


附加功能

“存储钥匙”具有两个附加功能, 如下描述。

发送至存储钥匙驱动器

您指定的“存储钥匙”驱动器自动添加到“发送至”菜单，使您能够右击文件并将它保存在“存储钥匙”驱动器上。



自动运行

MyKey 自动运行功能使许多类型文件，比如超文本标记语言（HTML）Web 页面，能够在您将“存储钥匙”插入计算机 USB 插槽的时候自动启动。

MyKey 运行并执行“存储钥匙”的 autorun.ini 文件。可以从 MyKey Settings 窗口禁用此功能。MyKey 自动运行语法与 CD-ROM 自动运行语法稍有不同，应用更广泛。

典型的 autorun.inf 文件包含两行文本格式（ASCII）的命令来启动文件 start.htm。例如，启动“存储钥匙” Web 页面的 autorun.inf 文件的语法可能为：

```
[launcher]
```

```
open=www.memorykey.com
```

又如，启动 Windows 计算器（calc.exe）的 autorun.inf 文件的语法可能为：

```
[launcher]
```

open=calc.exe

故障诊断

MyKey 显示许多消息，尽可能提供故障诊断的准则，如下所示：

- **Fatal error** — 这种一般的错误消息指示发生了严重错误，应用程序由此而不能恢复。
- **Windows version not supported** — 如果您尝试在不受支持的 Windows 版本上运行 MyKey，显示此消息。（请参阅第 5 页的『系统安装』。）
- **No administrative privileges** — 如果尝试在您不具备管理员权限的计算机上运行 MyKey，应用程序终止。
- **Large fonts** — MyKey 设计为使用小字体，如果使用大字体，它可能不能提供最优化的显示视图。要切换至小字体，请打开控制面板并选择此顺序：
显示属性 -> 设置 -> 高级 -> 字体大小。
- **Unable to connect to Memory Key** — 此消息指示 MyKey 从“存储钥匙”获取信息（比如版本号、容量、个人设置等等）时失败。
- **Unable to eject Memory Key** — 此消息通常指示在尝试卸下“存储钥匙”之前您还未关闭其上的所有应用程序或文件。关闭任何打开的应用程序或文件，然后再次尝试卸下“存储钥匙”。
- **现在无法停止设备‘xxx’设备。请稍后再停止该设备** — 在单击“拔出或弹出硬件”窗口中的**停止**后出现此消息。它通常指示在尝试卸下“存储钥匙”之前您还未关闭其上的所有应用程序或文件。关闭 MyKey 应用程序然后重试。如果此消息再次显示，则关闭所有打开的应用程序或文件，然后再次尝试卸下“存储钥匙”。

注：这条消息由操作系统而非 MyKey 应用程序生成，且仅出现于 Windows Me、Windows XP 或 Windows 2000 中。

常见问题解答 (FAQ)

以下列出了最常见问题解答中的几个。

问：如何检查我正使用的 MyKey 的版本？

答：最简单的方法就是右击 MyKey 的托盘图标，然后单击 **About**。

问：我可以在计算机上将 MyKey 和一个以上的“存储钥匙”一起使用吗？

答：可以。

问：为什么我只能在某些计算机上使用 MyKey？

答：您仅可以在您具有管理员权限的计算机上使用 MyKey。

问：为什么我不能将文件复制到我的“存储钥匙”？

答：您的“存储钥匙”可能是写保护的，或者您可能没有足够的可用空间。如果“存储钥匙”是写保护的，您将在 MyKey Console 的 LCD 显示器上看到“Write Protection（写保护）”徽标。

问：在关闭了“存储钥匙控制台”后如何恢复它呢？

答：双击或右击 MyKey 的托盘图标并选择 **Show**。

联系我们

请参阅第 35 页的附录 A，『Warranty information』获取联系信息。

第 4 章 使用多语言 KeySafe™

KeySafe 使您能够在“IBM 存储钥匙”上创建并访问受密码保护的安全区域，称为“保密区”。消息和提示指导您用密码设置 KeySafe 以及定制“保密区”以使其适应您个人和业务上保护信息的需求。此文本总结了这些过程，并包含一些“常见问题解答 (FAQ)”。

系统要求

- Pentium II 266MHz
- 800KB 可用磁盘空间
- 操作系统: Windows 98 SE、Windows Me、Windows 2000 或 Windows XP (Windows 98 需要设备驱动程序)
- KeySafe 在 Windows NT 中不受支持
- 访问您的主驱动器的权限 (通常是 C 盘驱动器)
- Windows 2000 和 Windows XP 的管理员权限

要达到最佳性能，请使用支持 24 位真彩色深度的图形加速器。

入门

警告: 当创建“保密区”时，将格式化“存储钥匙”，且所有数据将丢失。请在创建“保密区”之前备份您的文件。

创建保密区

要创建保密区，请执行以下操作:

1. 选择已指定给“存储钥匙”的可移动软盘驱动器，并双击 **KeySafe** 图标。

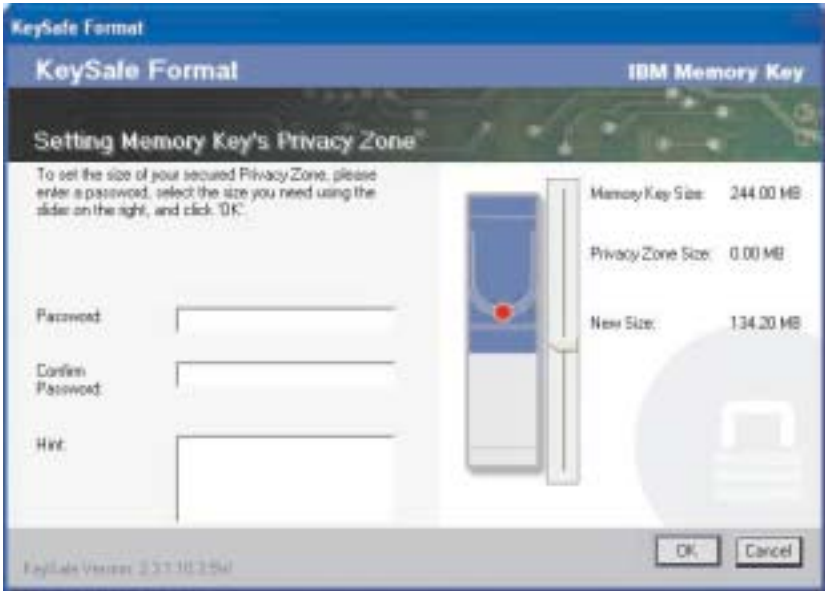
2. 从语言窗口选择首选语言，并单击 **OK**。受支持的语言是英语、法语、意大利语、德语、葡萄牙语（巴西）、中文（繁体或简体）和日语。



3. 在看到 KeySafe Welcome 窗口之后单击 **OK** 继续操作。



4. 在 KeySafe Format 窗口的相应字段输入以下信息：
 - a. 密码（必需）
 - b. 重新输入相同的密码以确认（必需）
 - c. 使您能记起密码的提示（可选）
 - d. 在“存储钥匙”滑动条上移动滑动条（向上或向下）以在第一次创建“保密区”时指定其大小。“保密区”的最大大小限制为“存储钥匙”90%的容量。将被保护起来的区域着色为蓝色。



5. 当设置了“保密区”大小后，单击 **OK**。
6. 要继续格式化操作，单击 **OK**。在完成格式化操作后，再次单击 **OK**。现在你可以登录到“保密区”。



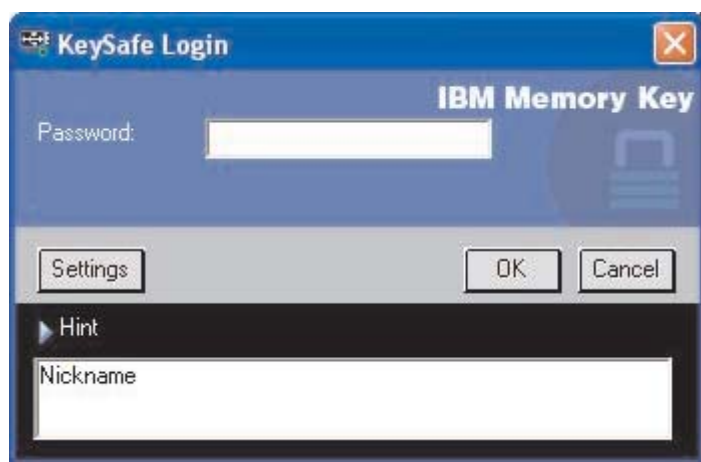
使用保密区

要使用“保密区”，请执行以下操作：

1. 双击桌面上的 **KeySafe** 图标。此操作打开 KeySafe Login 窗口。



2. 要登录到“保密区”，请输入密码并单击 **OK**。如果忘记了密码，请单击 **Hint**。如果错误输入密码，您将接收到一条消息。如果忘记了密码，打开 KeySafe Login 窗口中的 Hint 字段以获得帮助。输入正确的密码后，显示成功登录的消息。



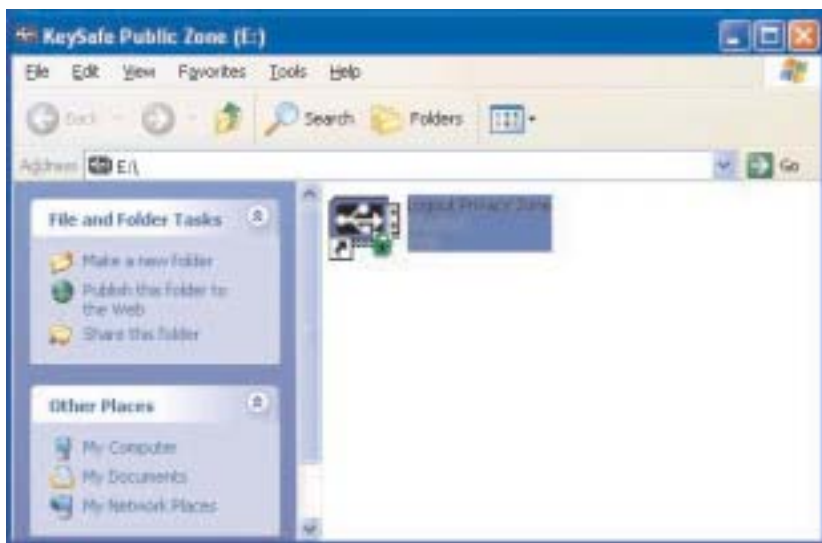
3. 如果在五次尝试后您仍未成功输入密码，KeySafe 将自动终止以保护您的受保护数据。如果该终止发生，则卸下“存储钥匙”并将其重新插入。在“存储钥匙”再次锁定之前，此操作将给您另外五次输入正确密码的尝试。

注销保密区

要注销“保密区”，请执行以下操作：

1. 保存并关闭所有从“存储钥匙”打开的文件。

2. 双击 **KeySafe** 图标。



3. 在 KeySafe Logout 窗口中单击 **OK** 注销。

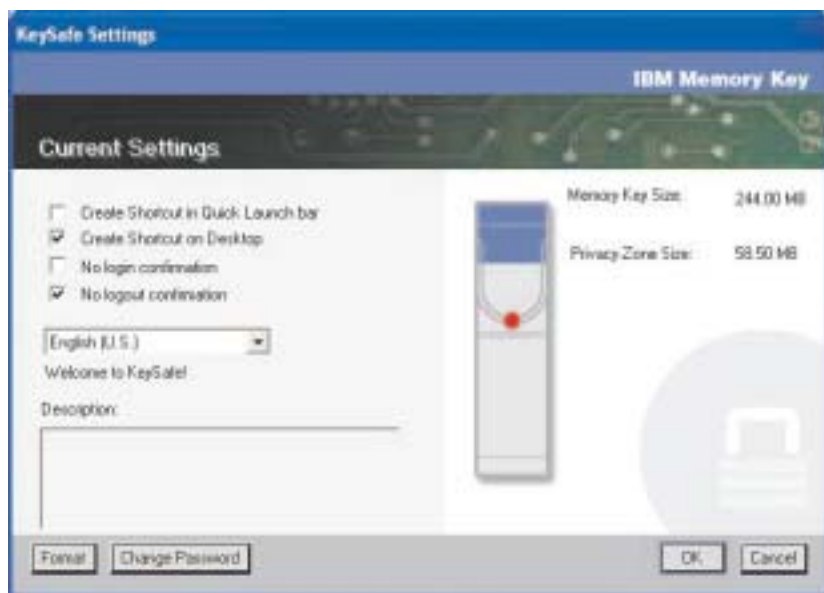
定制设置

桌面和密码的设置可以定制，如下描述。

桌面

要定制桌面，请执行以下操作：

1. 要为桌面定制 KeySafe，在 KeySafe Login 窗口中单击 **Settings**。此操作打开 KeySafe Settings 窗口。



2. 单击列出选项中的任何一个以选中它们（当鼠标放置到每个选项上时，Description 字段中有它们的描述）包括：
 - Create Shortcut in Quick Launch Bar
 - Create Shortcut on Desktop
 - No login confirmation
 - No logout confirmation
 - Language selection（语言选择）

更改密码

KeySafe 的较新版本使您能够用 KeySafe Settings 窗口中的 Change Password 按钮来更改密码。要使用 Change Password 按钮，请按照以下步骤操作：

1. 单击 **Change Password**。此操作打开一个“对话框”窗口。



2. 依次输入您的当前（旧）密码、新密码，再次输入新密码确认以及输入提示。
单击 **OK** 退出“对话框”窗口。

警告： 当不使用 **Change Password** 按钮更改密码时，“存储钥匙”将被格式化且所有的数据将丢失。

更改保密区

警告： 更改“保密区”的大小需要格式化“存储钥匙”，这将导致所有受保护的与未受保护的数据丢失。

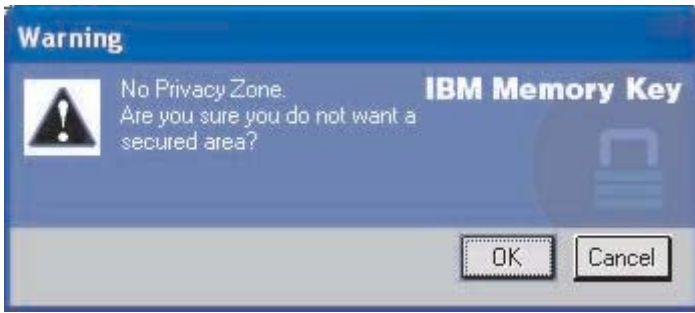
要更改“保密区”，请按照以下步骤操作：

1. 单击 **KeySafe Settings** 窗口中的 **Format**。此操作打开 **Format Options** 窗口。
2. 输入密码并再次输入以确认。
3. 输入提示以防您忘记密码。
4. 用滑动条设置“保密区”的大小。
5. 单击 **OK**。

如果要禁用“保密区”，并将整个“存储钥匙”空间用作“公共区”，请按照以下步骤操作：

1. 按照上面的步骤 1 到 3 操作。
2. 用滑动条将“保密区”的大小设置为 0%。

3. 单击 **OK** 确定此操作。



常见问题解答 (FAQ)

问：如何检查我正使用的 KeySafe 的版本？

答：最简单的方法就是右击“存储钥匙”上的 KeySafe 图标，然后单击 Properties 和 Version。

问：如何将 KeySafe 更新到最新的版本？

答：将压缩文件从 Web (www.pc.ibm.com/support) 下载到桌面；在 64 MB 或 256 MB USB 2.0 Memory Key 下搜索。解压缩此文件并将 exe 文件复制到“存储钥匙”。双击 KeySafe 以从“存储钥匙”启动它。不要使用您在桌面或快速启动栏上创建的快捷方式，因为这将启动旧的版本。

问：我能只更改 KeySafe 密码而不格式化“保密区”吗？

答：可以，使用 KeySafe Settings 窗口的 Change Password 按钮。请注意当不使用 Change Password 按钮更改密码时，“存储钥匙”将被格式化且所有的数据将丢失。

问：我想要保护“存储钥匙”上的所有数据。为什么我被限制在 90% 的“最大保密区”？

答：“存储钥匙”需要空间运行 KeySafe 以及存储有关“存储钥匙”的信息。“存储钥匙”10% 的空间可用于更新和今后的应用程序，这不会干扰到 KeySafe 操作。

问：如何知道我在“保密区”还是“公共区”工作？

答：在 Windows 2000 或 98 ME 中工作时，当您处于“保密区”时，KeySafe 图标显示时中间有把红色的锁。在 Windows 98、2000、ME 或 XP 中工作时，当您处于“保密区”时，根文件夹或“存储钥匙”图标中的背景色是蓝色。（如果您在计算机上选择了传统文件夹视图，则无法看到此视觉指示。）

问：如何在“公共区”和“保密区”中切换？

答：从桌面、存储钥匙或快速启动栏启动 KeySafe。如果您看到提示要求提供密码，这意味着您当前处于“公共区”。要切换到“保密区”，请输入密码并单击 OK。如果看到带有提示的弹出式窗口询问您从“保密区”注销的确认，这意味着您正在“保密区”工作。要切换，单击 OK。要保持登录在“保密区”，单击 Cancel。

问：我从“存储钥匙”意外删除了 KeySafe。我如何从“保密区”访问数据呢？

答：从与存储钥匙一起提供的 CD 复制 KeySafe.exe 或访问 <http://www.pc.ibm.com>；在 64 MB 或 256 MB USB 2.0 Memory Key 下搜索并下载 exe。将可以访问您先前指定的“保密区”。

问：我可以在计算机上将 KeySafe 与一个以上的“存储钥匙”一起使用吗？

答：可以。所有 IBM 64 MB 和 256 MB 存储钥匙支持安装在计算机操作系统上的 KeySafe 应用程序。

问：我能同时将一个以上的“存储钥匙”和 Keysafe 一起使用吗？

答：不可以。

问：为什么我只能在某些计算机上使用 KeySafe？

答：您仅能在您具有管理员权限的计算机上使用 KeySafe。

问：如果 KeySafe 格式化失败的话，还有其它方法格式化“存储钥匙”上的“公共区”和“保密区”吗？

答：有。使用 OS 格式化实用程序。然后复制 KeySafe，您就可以使用它了。

第 5 章 使用 IBM Memory Key Boot Utility

IBM Memory Key Boot Utility 使您能够将“存储钥匙”转化为可引导磁盘。在使用此应用程序并将“存储钥匙”转化为可引导磁盘后，您将能够从“存储钥匙”引导 IBM 计算机。

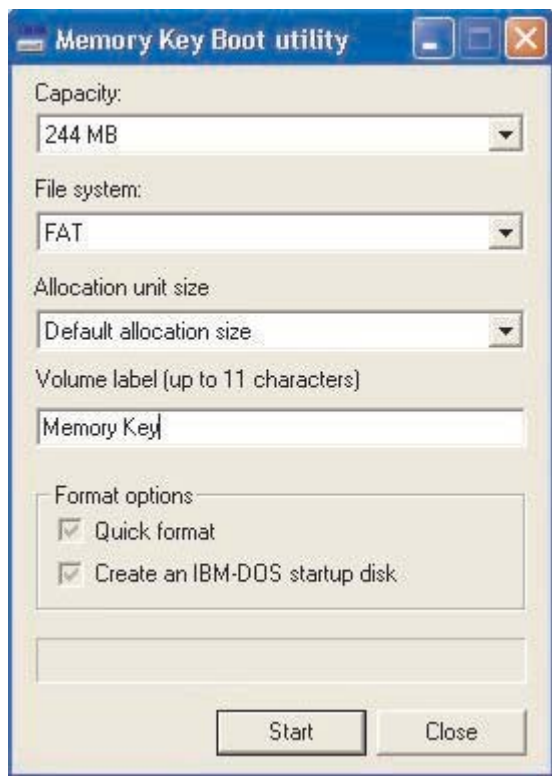
系统安装要求

- 支持可引导的 USB 设备的 BIOS。如果不确定 BIOS 是否支持可引导的 USB 设备，请联系您计算机的制造商。如果需要，可能存在可用的更新。
- 随您的计算机或 BIOS 更新一起提供的 BIOS 文档（如果适用）。
有关支持引导至 USB 存储设备的 IBM 计算机的更多信息，请访问 www.ibm.pc.com/support 并搜索 64MB 或 256MB USB 2.0 memory keys。
- Pentium II 266 MHz
- 1.5 MB 可用磁盘空间（在 C 盘驱动器上）。
- 操作系统：Windows 98 SE、Windows Me、Windows 2000 或 Windows XP（Windows 98 需要“存储钥匙”设备驱动程序）
- Windows 2000 或 Windows XP 的管理员权限
- IBM 64MB 或 256MB 存储钥匙

创建 IBM 引导存储钥匙

要创建引导存储钥匙，请执行以下操作：

1. 双击 CD 上的 **Boot Application**。应用程序窗口打开。



2. 插入“存储钥匙”。磁盘属性（比如容量或文件系统）在应用程序窗口的相应字段中显示。
3. 要创建卷标，请在“卷标”字段输入标签（最多 11 个字符）。
4. 要开始创建引导盘，单击 **Start**。显示一条警告消息通知您将删除所有的文件。要继续，单击 **OK**。要取消格式化过程，单击 **Cancel**。
5. 单击 **Start** 后，显示一个进度条，指示格式化过程的状态。格式化完成之后，显示消息指示格式化过程成功。
6. 要不创建引导盘就退出该程序，单击 **Cancel**。

注：

- a. 创建引导盘需要格式化“存储钥匙”。这将删除钥匙上的所有文件。
- b. 如果开始格式化过程，在它结束前您将不能异常终止。
- c. 在格式化时，切勿卸下“存储钥匙”，并确保关闭了所有可能使用“存储钥匙”的应用程序。

用 IBM 存储钥匙引导计算机

要用“IBM 存储钥匙”引导计算机，请执行以下操作：

1. 关闭计算机。将引导“存储钥匙”插入任何可用的 USB 插槽。
2. 打开系统并使用您的台式机或移动式计算机文档中概括的步骤来访问 BIOS 设置。在您的台式机或移动式计算机上找到决定磁盘的“引导 (Boot)”或“启动顺序 (Startup Order)”的部分。
3. 将该顺序更改为以下顺序：
 - 旧软盘驱动器（可能不适用，这取决于您的台式机或移动式计算机的配置）
 - ATAPI CD-ROM CD-ROM 驱动器或光盘驱动器
 - 硬盘驱动器 — USB 存储钥匙
 - 硬盘驱动器 — 主硬盘驱动器或装有操作系统或数据文件的驱动器
4. 保存设置更改并退出 BIOS。
5. 重新启动计算机。使用“存储钥匙”将引导至 DOS 提示符。

故障诊断

- **在具有“保密区”的钥匙上创建引导盘：**如果您先前已经在“存储钥匙”上（使用 KeySafe 应用程序）创建了“保密区”，则在运行引导应用程序之前，您将需要删除此“保密区”。删除此“保密区”的方法就是运行 KeySafe 并将 Privacy Zone 设置为“0”。有关更多信息，请参考 CD 上的 KeySafe 手册。
- **在启用了写保护的钥匙上创建引导磁盘：**如果您先前将钥匙设置为写保护（使用 MyKey 应用程序），则在运行引导应用程序之前，您将需要禁用此功能。有关更多信息，请参考 CD 上的 MyKey 手册。
- **同时使用多个“存储钥匙”：**如果插入了一个以上的“存储钥匙”，则将提示您卸下这些钥匙，只保留您要将其用作引导盘的钥匙。

附录 A. Warranty information

This section contains the warranty period for your product, information about obtaining warranty service and support, and the IBM Statement of Limited Warranty.

Warranty period

Contact your place of purchase for warranty service information.

Machine - IBM 64 MB and 256 MB USB 2.0 Memory Keys

Warranty period	Service delivery method
Parts: 1 year, labor: 1 year	Customer carry-in or mail-in

For information on European Union legal rights under applicable national legislation governing the sale of consumer goods, see 第 47 页的附录 B, 『European Union warranty information』.

Service and support

The following information describes the technical support that is available for your product, during the warranty period or throughout the life of the product. Refer to your IBM Statement of Limited Warranty for a full explanation of IBM warranty terms.

Warranty information on the World Wide Web

The IBM Machine Warranties Web site at http://www.ibm.com/servers/support/machine_warranties/ contains a worldwide overview of the IBM Limited Warranty for IBM Machines, a glossary of terms used in the Statement of Limited Warranty, Frequently Asked Questions (FAQ), and links to Product Support Web pages. The IBM Statement of Limited Warranty is available from this Web site in 29 languages in Portable Document Format (PDF).

Online technical support

Online technical support is available during the life of your product through the Personal Computing Support Web site at <http://www.ibm.com/pc/support/>.

During the warranty period, assistance for replacement or exchange of defective components is available. In addition, if your IBM option is installed in an IBM computer, you might be entitled to service at your location. Your technical support representative can help you determine the best alternative.

Telephone technical support

Installation and configuration support through the IBM HelpCenter® will be withdrawn or made available for a fee, at IBM's discretion, 90 days after the option has been withdrawn from marketing. Additional support offerings, including step-by-step installation assistance, are available for a nominal fee.

To assist the technical support representative, have available as much of the following information as possible:

- Option name
- Option number
- Proof of purchase
- Computer manufacturer, model, serial number (if IBM), and manual
- Exact wording of the error message (if any)
- Description of the problem
- Hardware and software configuration information for your system

If possible, be at your computer. Your technical support representative might want to walk you through the problem during the call.

For the support telephone number and support hours by country, refer to the following table. If the number for your country or region is not listed, contact your IBM reseller or IBM marketing representative. Response time may vary depending on the number and nature of the calls received.

Support 24 hours a day, 7 days a week	
Canada (Toronto only)	416-383-3344
Canada (all other)	1-800-565-3344
U.S.A. and Puerto Rico	1-800-772-2227
All other countries and regions	Go to http://www.ibm.com/pc/support/ , and click Support Phone List .

IBM Statement of Limited Warranty Z125-4753-06 8/2000

Part 1 - General Terms

This Statement of Limited Warranty includes Part 1 - General Terms and Part 2 - Country-unique Terms. The terms of Part 2 replace or modify those of Part 1. The warranties provided by IBM in this Statement of Limited Warranty apply only to Machines you purchase for your use, and not for resale, from IBM or your reseller. The term 『Machine』 means an IBM machine, its features, conversions, upgrades, elements, or accessories, or any combination of them. The term 『Machine』 does not include any software programs, whether pre-loaded with the Machine, installed subsequently or otherwise. Unless IBM specifies otherwise, the following warranties apply only in the country where you acquire the Machine. Nothing in this Statement of Limited Warranty affects any statutory rights of consumers that cannot be waived or limited by contract. If you have any questions, contact IBM or your reseller.

The IBM Warranty for Machines: IBM warrants that each Machine 1) is free from defects in materials and workmanship and 2) conforms to IBM's Official Published Specifications (『Specifications』). The warranty period for a Machine is a specified, fixed period commencing on its Date of Installation. The date on your sales receipt is the Date of Installation unless IBM or your reseller informs you otherwise.

If a Machine does not function as warranted during the warranty period, and IBM or your reseller are unable to either 1) make it do so or 2) replace it with one that is at least functionally equivalent, you may return it to your place of purchase and your money will be refunded.

Extent of Warranty: The warranty does not cover the repair or exchange of a Machine resulting from misuse, accident, modification, unsuitable physical or operating environment, improper maintenance by you, or failure caused by a product for which IBM is not responsible. The warranty is voided by removal or alteration of Machine or parts identification labels.

THESE WARRANTIES ARE YOUR EXCLUSIVE WARRANTIES AND REPLACE ALL OTHER WARRANTIES OR CONDITIONS, EXPRESS OR IMPLIED, INCLUDING, BUT NOT LIMITED TO, THE IMPLIED WARRANTIES OR CONDITIONS OF MERCHANTABILITY AND FITNESS FOR A PARTICULAR PURPOSE. THESE WARRANTIES GIVE YOU SPECIFIC LEGAL RIGHTS AND YOU MAY ALSO HAVE OTHER RIGHTS WHICH VARY FROM JURISDICTION TO JURISDICTION. SOME JURISDICTIONS DO NOT ALLOW THE EXCLUSION OR LIMITATION OF EXPRESS OR IMPLIED WARRANTIES, SO THE ABOVE EXCLUSION OR LIMITATION MAY NOT APPLY TO YOU. IN THAT EVENT, SUCH WARRANTIES ARE LIMITED IN DURATION TO THE WARRANTY PERIOD. NO WARRANTIES APPLY AFTER THAT PERIOD.

Items Not Covered by Warranty: IBM does not warrant uninterrupted or error-free operation of a Machine. Any technical or other support provided for a Machine under warranty, such as assistance via telephone with 『how-to』 questions and those regarding Machine set-up and installation, will be provided **WITHOUT WARRANTIES OF ANY KIND.**

Warranty Service: To obtain warranty service for a Machine, contact IBM or your reseller. If you do not register your Machine with IBM, you may be required to present proof of purchase.

During the warranty period, IBM or your reseller, if approved by IBM to provide warranty service, provides without charge certain types of repair and exchange service to keep Machines in, or restore them to, conformance with their Specifications. IBM or your reseller will inform you of the available types of service for a Machine based on its country of installation. At its discretion, IBM or your reseller will 1) either repair or exchange the failing Machine and 2) provide the service either at your location or a service center. IBM or your reseller will also manage and install selected engineering changes that apply to the Machine.

Some parts of IBM Machines are designated as Customer Replaceable Units (called 『CRUs』), e.g., keyboards, memory, or hard disk drives. IBM ships CRUs to you for replacement by you. You must return all defective CRUs to IBM within 30 days of your receipt of the replacement CRU. You are responsible for downloading designated Machine Code and Licensed Internal Code updates from an IBM Internet Web site or from other electronic media, and following the instructions that IBM provides.

When warranty service involves the exchange of a Machine or part, the item IBM or your reseller replaces becomes its property and the replacement becomes yours. You represent that all removed items are genuine and unaltered. The replacement may not be new, but will be in good working order and at least functionally equivalent to the item replaced. The replacement assumes the warranty service status of the replaced item. Many features, conversions, or upgrades involve the removal of parts and their return to IBM. A part that replaces a removed part will assume the warranty service status of the removed part.

Before IBM or your reseller exchanges a Machine or part, you agree to remove all features, parts, options, alterations, and attachments not under warranty service.

You also agree to

1. ensure that the Machine is free of any legal obligations or restrictions that prevent its exchange;
2. obtain authorization from the owner to have IBM or your reseller service a Machine that you do not own; and
3. where applicable, before service is provided:
 - a. follow the problem determination, problem analysis, and service request procedures that IBM or your reseller provides;

- b. secure all programs, data, and funds contained in a Machine;
- c. provide IBM or your reseller with sufficient, free, and safe access to your facilities to permit them to fulfill their obligations; and
- d. inform IBM or your reseller of changes in a Machine's location.

IBM is responsible for loss of, or damage to, your Machine while it is 1) in IBM's possession or 2) in transit in those cases where IBM is responsible for the transportation charges.

Neither IBM nor your reseller is responsible for any of your confidential, proprietary or personal information contained in a Machine which you return to IBM or your reseller for any reason. You should remove all such information from the Machine prior to its return.

Limitation of Liability: Circumstances may arise where, because of a default on IBM's part or other liability, you are entitled to recover damages from IBM. In each such instance, regardless of the basis on which you are entitled to claim damages from IBM (including fundamental breach, negligence, misrepresentation, or other contract or tort claim), except for any liability that cannot be waived or limited by applicable laws, IBM is liable for no more than

1. damages for bodily injury (including death) and damage to real property and tangible personal property; and
2. the amount of any other actual direct damages, up to the charges (if recurring, 12 months' charges apply) for the Machine that is subject of the claim. For purposes of this item, the term "Machine" includes Machine Code and Licensed Internal Code.

This limit also applies to IBM's suppliers and your reseller. It is the maximum for which IBM, its suppliers, and your reseller are collectively responsible.

UNDER NO CIRCUMSTANCES IS IBM LIABLE FOR ANY OF THE FOLLOWING: 1) THIRD-PARTY CLAIMS AGAINST YOU FOR DAMAGES (OTHER THAN THOSE UNDER THE FIRST ITEM LISTED ABOVE); 2) LOSS OF, OR DAMAGE TO, YOUR RECORDS OR DATA; OR 3) SPECIAL, INCIDENTAL, OR INDIRECT DAMAGES OR FOR ANY ECONOMIC CONSEQUENTIAL DAMAGES, LOST PROFITS OR LOST SAVINGS, EVEN IF IBM, ITS SUPPLIERS OR YOUR RESELLER IS INFORMED OF THEIR POSSIBILITY. SOME JURISDICTIONS DO NOT ALLOW THE EXCLUSION OR LIMITATION OF INCIDENTAL OR CONSEQUENTIAL DAMAGES, SO THE ABOVE LIMITATION OR EXCLUSION MAY NOT APPLY TO YOU.

Governing Law

Governing Law: Both you and IBM consent to the application of the laws of the country in which you acquired the Machine to govern, interpret, and enforce all of your and IBM's rights, duties, and obligations arising from, or relating in any manner to, the subject matter of this Agreement, without regard to conflict of law principles.

Part 2 - Country-unique Terms

AMERICAS

BRAZIL

Governing Law: *The following is added after the first sentence:* Any litigation arising from this Agreement will be settled exclusively by the court of Rio de Janeiro.

NORTH AMERICA

Warranty Service: *The following is added to this Section:* To obtain warranty service from IBM in Canada or the United States, call 1-800-IBM-SERV (426-7378).

CANADA

Governing Law: *The following replaces ¶ laws of the country in which you acquired the Machine ¶ in the first sentence:* laws in the Province of Ontario.

UNITED STATES

Governing Law: *The following replaces ¶ laws of the country in which you acquired the Machine ¶ in the first sentence:* laws of the State of New York.

ASIA PACIFIC

AUSTRALIA

The IBM Warranty for Machines: *The following paragraph is added to this Section:* The warranties specified in this Section are in addition to any rights you may have under the Trade Practices Act 1974 or other similar legislation and are only limited to the extent permitted by the applicable legislation.

Limitation of Liability: *The following is added to this Section:* Where IBM is in breach of a condition or warranty implied by the Trade Practices Act 1974 or other similar legislation, IBM's liability is limited to the repair or replacement of the goods or the supply of equivalent goods. Where that condition or warranty relates to right to sell, quiet possession or clear title, or the goods are of a kind ordinarily acquired for personal, domestic or household use or consumption, then none of the limitations in this paragraph apply.

Governing Law: *The following replaces ¶ laws of the country in which you acquired the Machine ¶ in the first sentence:* laws of the State or Territory.

CAMBODIA, LAOS, AND VIETNAM

Governing Law: *The following replaces ¶ laws of the country in which you acquired the Machine ¶ in the first sentence: laws of the State of New York.*

The following is added to this Section: Disputes and differences arising out of or in connection with this Agreement shall be finally settled by arbitration which shall be held in Singapore in accordance with the rules of the International Chamber of Commerce (ICC). The arbitrator or arbitrators designated in conformity with those rules shall have the power to rule on their own competence and on the validity of the Agreement to submit to arbitration. The arbitration award shall be final and binding for the parties without appeal and the arbitral award shall be in writing and set forth the findings of fact and the conclusions of law.

All proceedings shall be conducted, including all documents presented in such proceedings, in the English language. The number of arbitrators shall be three, with each side to the dispute being entitled to appoint one arbitrator.

The two arbitrators appointed by the parties shall appoint a third arbitrator before proceeding upon the reference. The third arbitrator shall act as chairman of the proceedings. Vacancies in the post of chairman shall be filled by the president of the ICC. Other vacancies shall be filled by the respective nominating party. Proceedings shall continue from the stage they were at when the vacancy occurred.

If one of the parties refuses or otherwise fails to appoint an arbitrator within 30 days of the date the other party appoints its, the first appointed arbitrator shall be the sole arbitrator, provided that the arbitrator was validly and properly appointed.

The English language version of this Agreement prevails over any other language version.

HONG KONG AND MACAU

Governing Law: *The following replaces ¶ laws of the country in which you acquired the Machine ¶ in the first sentence: laws of Hong Kong Special Administrative Region.*

INDIA

Limitation of Liability: *The following replaces items 1 and 2 of this Section:*

1. liability for bodily injury (including death) or damage to real property and tangible personal property will be limited to that caused by IBM's negligence;
2. as to any other actual damage arising in any situation involving nonperformance by IBM pursuant to, or in any way related to the subject of this Statement of Limited Warranty, IBM's liability will be limited to the charge paid by you for the individual Machine that is the subject of the claim.

JAPAN

Governing Law: *The following sentence is added to this Section:* Any doubts concerning this Agreement will be initially resolved between us in good faith and in accordance with the principle of mutual trust.

NEW ZEALAND

The IBM Warranty for Machines: *The following paragraph is added to this Section:* The warranties specified in this Section are in addition to any rights you may have under the Consumer Guarantees Act 1993 or other legislation which cannot be excluded or limited. The Consumer Guarantees Act 1993 will not apply in respect of any goods which IBM provides, if you require the goods for the purposes of a business as defined in that Act.

Limitation of Liability: *The following is added to this Section:* Where Machines are not acquired for the purposes of a business as defined in the Consumer Guarantees Act 1993, the limitations in this Section are subject to the limitations in that Act.

PEOPLE'S REPUBLIC OF CHINA (PRC)

Governing Law: *The following replaces this Section:* Both you and IBM consent to the application of the laws of the State of New York (except when local law requires otherwise) to govern, interpret, and enforce all your and IBM's rights, duties, and obligations arising from, or relating in any manner to, the subject matter of this Agreement, without regard to conflict of law principles.

Any disputes arising from or in connection with this Agreement will first be resolved by friendly negotiations, failing which either of us has the right to submit the dispute to the China International Economic and Trade Arbitration Commission in Beijing, the PRC, for arbitration in accordance with its arbitration rules in force at the time. The arbitration tribunal will consist of three arbitrators. The language to be used therein will be English and Chinese. An arbitral award will be final and binding on all the parties, and will be enforceable under the Convention on the Recognition and Enforcement of Foreign Arbitral Awards (1958).

The arbitration fee will be borne by the losing party unless otherwise determined by the arbitral award.

During the course of arbitration, this Agreement will continue to be performed except for the part which the parties are disputing and which is undergoing arbitration.

EUROPE, MIDDLE EAST, AFRICA (EMEA)

THE FOLLOWING TERMS APPLY TO ALL EMEA COUNTRIES: The terms of this Statement of Limited Warranty apply to Machines purchased from IBM or an IBM reseller.

Warranty Service: If you purchase an IBM Machine in Austria, Belgium, Denmark, Estonia, Finland, France, Germany, Greece, Iceland, Ireland, Italy, Latvia, Lithuania, Luxembourg, Netherlands, Norway, Portugal, Spain, Sweden, Switzerland or United Kingdom, you may obtain warranty service for that Machine in any of those countries from either (1) an IBM reseller approved to perform warranty service or (2) from IBM. If you purchase an IBM Personal Computer Machine in Albania, Armenia, Belarus, Bosnia and Herzegovina, Bulgaria, Croatia, Czech Republic, Georgia, Hungary, Kazakhstan, Kirghizia, Federal Republic of Yugoslavia, Former Yugoslav Republic of Macedonia (FYROM), Moldova, Poland, Romania, Russia, Slovak Republic, Slovenia, or Ukraine, you may obtain warranty service for that Machine in any of those countries from either (1) an IBM reseller approved to perform warranty service or (2) from IBM.

If you purchase an IBM Machine in a Middle Eastern or African country, you may obtain warranty service for that Machine from the IBM entity within the country of purchase, if that IBM entity provides warranty service in that country, or from an IBM reseller, approved by IBM to perform warranty service on that Machine in that country. Warranty service in Africa is available within 50 kilometers of an IBM authorized service provider. You are responsible for transportation costs for Machines located outside 50 kilometers of an IBM authorized service provider.

Governing Law: The applicable laws that govern, interpret and enforce rights, duties, and obligations of each of us arising from, or relating in any manner to, the subject matter of this Statement, without regard to conflict of laws principles, as well as Country-unique terms and competent court for this Statement are those of the country in which the warranty service is being provided, except that in 1) Albania, Bosnia-Herzegovina, Bulgaria, Croatia, Hungary, Former Yugoslav Republic of Macedonia, Romania, Slovakia, Slovenia, Armenia, Azerbaijan, Belarus, Georgia, Kazakhstan, Kyrgyzstan, Moldova, Russia, Tajikistan, Turkmenistan, Ukraine, and Uzbekistan, the laws of Austria apply; 2) Estonia, Latvia, and Lithuania, the laws of Finland apply; 3) Algeria, Benin, Burkina Faso, Cameroon, Cape Verde, Central African Republic, Chad, Congo, Djibouti, Democratic Republic of Congo, Equatorial Guinea, France, Gabon, Gambia, Guinea, Guinea-Bissau, Ivory Coast, Lebanon, Mali, Mauritania, Morocco, Niger, Senegal, Togo, and Tunisia, this Agreement will be construed and the legal relations between the parties will be determined in accordance with the French laws and all disputes arising out of this Agreement or related to its violation or execution, including summary proceedings, will be settled exclusively by the Commercial Court of Paris; 4) Angola, Bahrain, Botswana, Burundi, Egypt, Eritrea, Ethiopia, Ghana, Jordan, Kenya, Kuwait, Liberia, Malawi, Malta, Mozambique, Nigeria, Oman, Pakistan, Qatar, Rwanda, Sao Tome, Saudi Arabia, Sierra Leone, Somalia, Tanzania, Uganda, United Arab Emirates, United Kingdom, West Bank/Gaza, Yemen, Zambia, and Zimbabwe, this Agreement will be governed by English Law and disputes relating to it will be submitted to the exclusive jurisdiction of the English courts; and 5) in Greece, Israel, Italy, Portugal, and Spain any legal claim arising out of this Statement will be brought before, and finally settled by, the competent court of Athens, Tel Aviv, Milan, Lisbon, and Madrid, respectively.

THE FOLLOWING TERMS APPLY TO THE COUNTRY SPECIFIED:

AUSTRIA AND GERMANY

The IBM Warranty for Machines: *The following replaces the first sentence of the first paragraph of this Section:* The warranty for an IBM Machine covers the functionality of the Machine for its normal use and the Machine's conformity to its Specifications.

The following paragraphs are added to this Section:

The minimum warranty period for Machines is six months. In case IBM or your reseller is unable to repair an IBM Machine, you can alternatively ask for a partial refund as far as justified by the reduced value of the unrepaired Machine or ask for a cancellation of the respective agreement for such Machine and get your money refunded.

Extent of Warranty: *The second paragraph does not apply.*

Warranty Service: *The following is added to this Section:* During the warranty period, transportation for delivery of the failing Machine to IBM will be at IBM's expense.

Limitation of Liability: *The following paragraph is added to this Section:* The limitations and exclusions specified in the Statement of Limited Warranty will not apply to damages caused by IBM with fraud or gross negligence and for express warranty.

The following sentence is added to the end of item 2: IBM's liability under this item is limited to the violation of essential contractual terms in cases of ordinary negligence.

EGYPT

Limitation of Liability: *The following replaces item 2 in this Section:* as to any other actual direct damages, IBM's liability will be limited to the total amount you paid for the Machine that is the subject of the claim. For purposes of this item, the term 『Machine』 includes Machine Code and Licensed Internal Code.

Applicability of suppliers and resellers (unchanged).

FRANCE

Limitation of Liability: *The following replaces the second sentence of the first paragraph of this Section:* In such instances, regardless of the basis on which you are entitled to claim damages from IBM, IBM is liable for no more than: (items 1 and 2 unchanged).

IRELAND

Extent of Warranty: *The following is added to this Section:* Except as expressly provided in these terms and conditions, all statutory conditions, including all warranties implied, but without prejudice to the generality of the foregoing all warranties implied by the Sale of Goods Act 1893 or the Sale of Goods and Supply of Services Act 1980 are hereby excluded.

Limitation of Liability: *The following replaces items one and two of the first paragraph of this Section:* 1. death or personal injury or physical damage to your real property solely caused by IBM's negligence; and 2. the amount of any other actual direct damages, up to 125 percent of the charges (if recurring, the 12 months' charges apply) for the Machine that is the subject of the claim or which otherwise gives rise to the claim.

Applicability of suppliers and resellers (unchanged).

The following paragraph is added at the end of this Section: IBM's entire liability and your sole remedy, whether in contract or in tort, in respect of any default shall be limited to damages.

ITALY

Limitation of Liability: *The following replaces the second sentence in the first paragraph:* In each such instance unless otherwise provided by mandatory law, IBM is liable for no more than: 1. (unchanged) 2. as to any other actual damage arising in all situations involving nonperformance by IBM pursuant to, or in any way related to the subject matter of this Statement of Warranty, IBM's liability, will be limited to the total amount you paid for the Machine that is the subject of the claim.
Applicability of suppliers and resellers (unchanged).

The following replaces the third paragraph of this Section: Unless otherwise provided by mandatory law, IBM and your reseller are not liable for any of the following: (items 1 and 2 unchanged) 3) indirect damages, even if IBM or your reseller is informed of their possibility.

SOUTH AFRICA, NAMIBIA, BOTSWANA, LESOTHO AND SWAZILAND

Limitation of Liability: *The following is added to this Section:* IBM's entire liability to you for actual damages arising in all situations involving nonperformance by IBM in respect of the subject matter of this Statement of Warranty will be limited to the charge paid by you for the individual Machine that is the subject of your claim from IBM.

UNITED KINGDOM

Limitation of Liability: *The following replaces items 1 and 2 of the first paragraph of this Section:*

1. death or personal injury or physical damage to your real property solely caused by IBM's negligence;
2. the amount of any other actual direct damages or loss, up to 125 percent of the charges (if recurring, the 12 months' charges apply) for the Machine that is the subject of the claim or which otherwise gives rise to the claim;

The following item is added to this paragraph: 3. breach of IBM's obligations implied by Section 12 of the Sale of Goods Act 1979 or Section 2 of the Supply of Goods and Services Act 1982.

Applicability of suppliers and resellers (unchanged).

The following is added to the end of this Section: IBM's entire liability and your sole remedy, whether in contract or in tort, in respect of any default shall be limited to damages.

附录 B. European Union warranty information

Consumers in the European Union have legal rights under applicable national legislation governing the sale of consumer goods. This legislation may apply to you if you purchased this product as a consumer (that is, as a natural person, and for personal use which is not related to your trade, business or profession). To obtain warranty service under this legislation, you will need to present the proof of purchase to IBM, together with an indication that you are a consumer.

Dans l'Union européenne, les consommateurs disposent de droits selon la loi en vigueur nationale régissant la vente de biens de consommation. Cette loi peut vous être applicable si vous avez acheté ce produit en tant que consommateur (c'est-à-dire, en tant que personne physique, et pour un usage privé qui n'a aucun rapport avec votre commerce, votre métier ou profession). Pour bénéficier du service prévu par la Garantie dans le cadre de cette loi, vous devez présenter la preuve d'achat correspondante à IBM, en lui indiquant que vous êtes un consommateur.

I consumatori dell'Unione Europea sono tutelati dalla legislazione nazionale che regola la vendita dei beni al consumatore. Tale legislazione può essere applicata se il prodotto è stato acquistato da un consumatore (vale a dire, una persona fisica e per uso personale non legato al commercio, all'azienda o alla professione svolta). Per ottenere il servizio di garanzia con questa legislazione, occorre presentare una prova di acquisto alla IBM, insieme con l'indicazione che il richiedente è un consumatore.

In der Europäischen Union haben die Verbraucher nach der geltenden nationalen Gesetzgebung Rechte hinsichtlich des Verbrauchsgüterkaufs. Diese Gesetzgebung kann für Sie gelten, wenn Sie dieses Produkt als Privatkunde erworben haben (d. h. als natürliche Person und für den persönlichen Gebrauch, der nicht mit Ihrem Gewerbe, Ihrem Unternehmen oder Ihrer beruflichen Tätigkeit zusammenhängt). Um unter dieser Gesetzgebung Garantieservice zu erhalten, müssen Sie IBM den Kaufnachweis zusammen mit einem Nachweis dafür, dass Sie Privatkunde sind, vorlegen.

Los consumidores de la Unión europea tienen derechos legales de acuerdo con la legislación nacional aplicable que regula la venta de bienes de consumo. Esta legislación puede aplicarse en su caso si ha adquirido este producto como un consumidor (es decir, como una persona natural y para uso personal que no esté relacionado con su comercio, negocio o profesión). Para obtener servicio de garantía de acuerdo con esta legislación, tendrá que presentar el justificante de compra a IBM, junto con información indicando que es un consumidor.

Na União Europeia, os consumidores gozam de direitos legais nos termos da legislação nacional aplicável que rege a venda de bens de consumo. Esta legislação poderá ser-lhe aplicável caso tenha adquirido este produto na qualidade de consumidor (ou seja, um indivíduo, para utilização pessoal, não relacionada com a sua actividade profissional,

comercial ou negócio). Para obter serviço de garantia nos termos desta legislação, terá que apresentar a prova de compra à IBM, em conjunto com a indicação de que adquiriu o produto na qualidade de consumidor.

Forbrugere i EU har via gældende national lovgivning visse rettigheder i forbindelse med salg af forbrugsvarer. Denne lovgivning gælder muligvis for dig, hvis du har anskaffet dette produkt som forbruger, dvs. som fysisk person og til personlig brug og ikke i forbindelse med dit fag, din forretning eller din profession. For at opnå garantiservice i henhold til denne lovgivning skal du vise kvitteringen for købet af produktet til IBM og angive, at du er forbruger.

Klanten in de Europese Unie hebben wettelijke rechten onder toepasselijke landelijke wetgeving die van toepassing is op de verkoop van consumptiegoederen. Deze wetgeving is mogelijk op u van toepassing als u dit product als consument hebt aangeschaft (dat is als natuurlijk persoon en voor persoonlijk gebruik dat niet in verband staat tot uw handel, zaken of beroep). Voor het verkrijgen van garantieservice onder deze wetgeving moet u het bewijs van aankoop kunnen tonen aan IBM, samen met een indicatie dat u een consument bent.

EU-maissa kuluttajilla on kulutustavaroiden myyntiä koskevan paikallisen lainsäädännön mukaiset oikeudet. Tämä lainsäädäntö saattaa koskea teitä, jos olette hankkinut tämän tuotteen kuluttajana (luonnollisena henkilönä kaupankäyntiin, liiketoimintaan tai ammatinharjoittamiseen liittymättömä henkilökohtaiseen käyttöön). Täyttäkää tässä tapauksessa alla olevat tie ja toimittakaa kortti IBM:lle rekisteröintiä varten. IBM käyttää tietoja varmistaakseen, että teille kuuluvat kuluttajan oikeudet toteutuvat.

Konsumenter inom EU har lagliga rättigheter i enlighet med tillämplig lagstiftning i varje land, avseende försäljning av konsumentvaror. Denna lagstiftning kan gälla dig, om du har köpt varan i egenskap av konsument (med konsument avses en fysisk person som köper en vara för personligt bruk, ej relaterat till personens yrkesmässiga verksamhet). Om du vill ha garantiservice i enlighet med denna lagstiftning, måste du visa upp ett inköpsbevis för IBM, tillsammans med något som tyder på att du är konsument.

Οι καταναλωτές στην Ευρωπαϊκή Ένωση έχουν νόμιμα δικαιώματα βάσει της ισχύουσας εθνικής νομοθεσίας που διέπει την πώληση καταναλωτικών αγαθών. Η νομοθεσία αυτή εφαρμόζεται στην περίπτωσης σας εάν αγοράσατε αυτό το προϊόν ως καταναλωτής (δηλαδή ως φυσικό πρόσωπο και για προσωπική χρήση που δεν σχετίζεται με την επιχείρηση ή το επάγγελμά σας). Για να λάβετε υπηρεσίες εγγύησης βάσει της εν λόγω νομοθεσίας, θα πρέπει να προσκομίσετε στην IBM την απόδειξη αγοράς και να δηλώσετε ότι είστε καταναλωτής.

附录 C. Notices

IBM may not offer the products, services, or features discussed in this document in all countries. Consult your local IBM representative for information on the products and services currently available in your area. Any reference to an IBM product, program, or service is not intended to state or imply that only that IBM product, program, or service may be used. Any functionally equivalent product, program, or service that does not infringe any IBM intellectual property right may be used instead. However, it is the user's responsibility to evaluate and verify the operation of any non-IBM product, program, or service.

IBM may have patents or pending patent applications covering subject matter described in this document. The furnishing of this document does not give you any license to these patents. You can send license inquiries, in writing, to:

*IBM Director of Licensing
IBM Corporation
North Castle Drive
Armonk, NY 10504-1785
U.S.A.*

INTERNATIONAL BUSINESS MACHINES CORPORATION PROVIDES THIS PUBLICATION 『AS IS』 WITHOUT WARRANTY OF ANY KIND, EITHER EXPRESS OR IMPLIED, INCLUDING, BUT NOT LIMITED TO, THE IMPLIED WARRANTIES OF NON-INFRINGEMENT, MERCHANTABILITY OR FITNESS FOR A PARTICULAR PURPOSE. Some jurisdictions do not allow disclaimer of express or implied warranties in certain transactions, therefore, this statement may not apply to you.

This information could include technical inaccuracies or typographical errors. Changes are periodically made to the information herein; these changes will be incorporated in new editions of the publication. IBM may make improvements and/or changes in the product(s) and/or the program(s) described in this publication at any time without notice.

The products described in this document are not intended for use in implantation or other life support applications where malfunction may result in injury or death to persons. The information contained in this document does not affect or change IBM product specifications or warranties. Nothing in this document shall operate as an express or implied license or indemnity under the intellectual property rights of IBM or third parties. All information contained in this document was obtained in specific environments and is presented as an illustration. The result obtained in other operating environments may vary.

IBM may use or distribute any of the information you supply in any way it believes appropriate without incurring any obligation to you.

Any references in this publication to non-IBM Web sites are provided for convenience only and do not in any manner serve as an endorsement of those Web sites. The materials at those Web sites are not part of the materials for this IBM product, and use of those Web sites is at your own risk.

Any performance data contained herein was determined in a controlled environment. Therefore, the result obtained in other operating environments may vary significantly. Some measurements may have been made on development-level systems and there is no guarantee that these measurements will be the same on generally available systems. Furthermore, some measurements may have been estimated through extrapolation. Actual results may vary. Users of this document should verify the applicable data for their specific environment.

Trademarks

The following terms are trademarks of International Business Machines Corporation in the United States, other countries, or both:

IBM
HelpCenter

Microsoft, Windows, and Windows NT are trademarks of Microsoft Corporation in the United States, other countries, or both.

Other company, product, or service names may be trademarks or service marks of others.

Federal Communications Commission (FCC) statement

64 MB or 256 MB USB 2.0 Memory Key

Note: This equipment has been tested and found to comply with the limits for a Class B digital device, pursuant to Part 15 of the FCC Rules. These limits are designed to provide reasonable protection against harmful interference in a residential installation. This equipment generates, uses, and can radiate radio frequency energy and, if not installed and used in accordance with the instructions, may cause harmful interference to radio communications. However, there is no guarantee that interference will not occur in a particular installation. If this equipment does cause harmful interference to radio or television reception, which can be determined by turning the equipment off and on, the user is encouraged to try to correct the interference by one or more of the following measures:

- Reorient or relocate the receiving antenna.
- Increase the separation between the equipment and receiver.

- Connect the equipment into an outlet on a circuit different from that to which the receiver is connected.
- Consult an IBM authorized dealer or service representative for help.

Properly shielded and grounded cables and connectors must be used in order to meet FCC emission limits. Proper cables and connectors are available from IBM authorized dealers. IBM is not responsible for any radio or television interference caused by using other than recommended cables and connectors or by unauthorized changes or modifications to this equipment. Unauthorized changes or modifications could void the user's authority to operate the equipment.

This device complies with Part 15 of the FCC Rules. Operation is subject to the following two conditions: (1) this device may not cause harmful interference, and (2) this device must accept any interference received, including interference that may cause undesired operation.

Responsible party:

International Business Machines Corporation
 New Orchard Road
 Armonk, NY 10504
 Telephone: 1-919-543-2193



Tested To Comply
 With FCC Standards

FOR HOME OR OFFICE USE

Industry Canada Class B emission compliance statement

This Class B digital apparatus complies with Canadian ICES-003.

Avis de conformité a la réglementation d'Industrie Canada

Cet appareil numérique de la classe B est conforme à la norme NMB-003 du Canada.

Deutsche EMV-Direktive (electromagnetische Verträglichkeit)

Zulassungsbesecheinigung laut dem Deutschen Gesetz über die elektromagnetische Verträglichkeit von Geräten (EMVG) vom 30. August 1995 (bzw. der EMC EG Richtlinie 89/336):

Dieses Gerät ist berechtigt in Übereinstimmung mit dem Deutschen EMVG das EG-Konformitätszeichen - CE - zu führen. Verantwortlich für die Konformitätserklärung nach Paragraph 5 des EMVG ist die:

IBM Deutschland Informationssysteme GmbH, 70548 Stuttgart.

Informationen in Hinsicht EMVG Paragraph 3 Abs. (2) 2:

Das Gerät erfüllt die Schutzanforderungen nach EN 55024:1998 und EN 55022:1998 Klasse B.

EN 55022 Hinweis:

¶ Wird dieses Gerät in einer industriellen Umgebung betrieben (wie in EN 55022:B festgelegt), dann kann es dabei eventuell gestört werden. In solch einem FA11 ist der Abstand bzw. die Abschirmung zu der industriellen Störquelle zu vergrößern. ¶

Anmerkung:

Um die Einhaltung des EMVG sicherzustellen sind die Geräte, wie in den IBM Handbüchern angegeben, zu installieren und zu betreiben.

European Union - emission directive

This product is in conformity with the protection requirements of EU Council Directive 89/336/ECC on the approximation of the laws of the Member States relating to electromagnetic compatibility.

IBM can not accept responsibility for any failure to satisfy the protection requirements resulting from a non-recommended modification of the product, including the fitting of non-IBM option cards.

This product has been tested and found to comply with the limits for Class B Information Technology Equipment according to European Standard EN 55022. The limits for Class B equipment were derived for typical residential environments to provide reasonable protection against interference with licensed communication devices.

Union Européenne - Directive Conformité électromagnétique

Ce produit est conforme aux exigences de protection de la Directive 89/336/EEC du Conseil de l'UE sur le rapprochement des lois des États membres en matière de compatibilité électromagnétique.

IBM ne peut accepter aucune responsabilité pour le manquement aux exigences de protection résultant d'une modification non recommandée du produit, y compris l'installation de cartes autres que les cartes IBM.

Ce produit a été testé et il satisfait les conditions de l'équipement informatique de Classe B en vertu de Standard européen EN 55022. Les conditions pour l'équipement

de Classe B ont été définies en fonction d'un contexte résidentiel ordinaire afin de fournir une protection raisonnable contre l'interférence d'appareils de communication autorisés.

Unione Europea - Directiva EMC (Conformidad electromagnética)

Este producto satisface los requisitos de protección del Consejo de la UE, Directiva 89/336/CEE en lo que a la legislación de los Estados Miembros sobre compatibilidad electromagnética se refiere.

IBM no puede aceptar responsabilidad alguna si este producto deja de satisfacer dichos requisitos de protección como resultado de una modificación no recomendada del producto, incluyendo el ajuste de tarjetas de opción que no sean IBM.

Este producto ha sido probado y satisface los límites para Equipos Informáticos Clase B de conformidad con el Estándar Europeo EN 55022. Los límites para los equipos de Clase B se han establecido para entornos residenciales típicos a fin de proporcionar una protección razonable contra las interferencias con dispositivos de comunicación licenciados.

Union Europea - Normativa EMC

Questo prodotto è conforme alle normative di protezione ai sensi della Direttiva del Consiglio dell'Unione Europea 89/336/CEE sull'armonizzazione legislativa degli stati membri in materia di compatibilità elettromagnetica.

IBM non accetta responsabilità alcuna per la mancata conformità alle normative di protezione dovuta a modifiche non consigliate al prodotto, compresa l'installazione di schede e componenti di marca diversa da IBM.

Le prove effettuate sul presente prodotto hanno accertato che esso rientra nei limiti stabiliti per le apparecchiature di informatica Classe B ai sensi della Norma Europea EN 55022. I limiti delle apparecchiature della Classe B sono stati stabiliti al fine di fornire ragionevole protezione da interferenze mediante dispositivi di comunicazione in concessione in ambienti residenziali tipici.

이 기기는 가정용으로 전자파 적합등록을 한 기기로서
주거지역에서는 물론 모든 지역에서 사용할 수 있습니다.

この装置は、情報処理装置等電波障害自主規制協議会（VCCI）の基準に基づきクラスB情報技術装置です。この装置は、家庭環境で使用することを目的としていますが、この装置がラジオやテレビジョン受信機に近接して使用されると、受信障害を引き起こすことがあります。
取扱説明書に従って正しい取り扱いをして下さい。

Japanese statement of compliance for products less than or equal to 20 A per phase

高調波ガイドライン適合品

First Paragraph



部件号: 22P9028

中国印刷

(1P) P/N: 22P9028

