

IBM TotalStorage FAStT600 and Storage Manager
Version 8.3



Library Guide and Common Index

IBM TotalStorage FAStT600 and Storage Manager
Version 8.3



Library Guide and Common Index

Note

Before using this information and the product it supports, read the general information in "Notices" on page 39.

First Edition (April 2003)

© Copyright International Business Machines Corporation 2003. All rights reserved.

US Government Users Restricted Rights – Use, duplication or disclosure restricted by GSA ADP Schedule Contract with IBM Corp.

Using the Library Guide and Common Index

The IBM® TotalStorage™ FAStT600 and Storage Manager Version 8.3 Library Guide and Common Index applies to the IBM TotalStorage FAStT600 hardware and IBM TotalStorage FAStT Storage Manager Version 8.3 software library. Storage Manager Version 8.3 supports Linux, Novell NetWare, Microsoft® Windows NT®, Windows® 2000, HP-UX, AIX, and Solaris operating systems.

Use this softcopy document as a dynamic task-oriented guide to the FAStT library and cross index of related topics. Dynamic links from the master index to particular chapters, headings, and sections within these documents operate only when those documents reside together in the same directory as the FAStT Library Guide and Common Index. Links to Internet documents cited outside the index depend on the proper configuration of your Adobe Acrobat Reader.

If your Adobe Acrobat Reader is not configured to access the Internet and to take full advantage of the FAStT Library Guide and Common Index, identify the version of your Acrobat Reader and configure it as follows:

Acrobat Reader 4.0

1. Click **File -> Preferences -> General**.
2. Clear the **Web browser integration** box.
3. Click **OK**.
4. Click **File -> Preferences -> Weblink...**
5. Set the Web browser application to use an external browser (for example, Navigator or Internet Explorer).
6. Click **OK**.
7. Click **File -> Preferences -> Web capture...**
8. Change the **Open Weblinks** field to **In Web Browser**.

Acrobat Reader 5.0

1. Click **Edit -> Preferences -> Web capture**
2. Change the **Open Weblinks** field to **In Web Browser**.

Click this button for information about Adobe Acrobat Reader, as well as to get downloads of the reader:

Adobe Acrobat Downloads

Contents of this document

This document consists of the following sections:

- “**FAStT installation process overview**” on page 5

An installation overview diagram that associates the hardware and software documents with their ordered installation tasks.

- “**FAStT product libraries (document and task)**” on page 7

Tables that detail FAStT product libraries whose document titles are associated with common user tasks and link you to complete texts on the Internet.

- “**Master Index: Storage Manager 8.3 and FAStT600**” on page 17

Index entries that link you directly to their respective references within each of the following documents as updated for the current release:

1. *IBM TotalStorage FAStT Storage Manager 8.3 Installation and Support Guide for Microsoft Windows NT and Windows 2000*, GC26-7522 (coded in the index as **SMWIN**)
2. *IBM TotalStorage FAStT Storage Manager 8.3 Installation and Support Guide for Linux*, GC26-7519 (coded in the index as **SMLINUX**)
3. *IBM TotalStorage FAStT Storage Manager 8.3 Installation and Support Guide for Novell NetWare*, GC26-7520 (coded in the index as **SMNetWare**)
4. *IBM TotalStorage FAStT Storage Manager 8.3 Installation and Support Guide for UNIX and AIX® Environments*, GC26-7521 (coded in the index as **SMUNIX**)
5. *IBM TotalStorage FAStT FC2-133 Dual Port Host Bus Adapter Installation and User's Guide*, GC26-7532 (coded in the index as **HBAguide**)
6. *IBM TotalStorage FAStT Fibre Channel Hardware Maintenance Manual and Problem Determination Guide*, GC26-7528 (coded in the index as **HMMPD**)
7. *IBM TotalStorage FAStT600 Fibre Channel Storage Server Installation and User's Guide*, GC26-7531 (coded in the index as **INSTALL**)

This document is intended to be used in softcopy form. Independent use of this document in hardcopy form is, therefore, significantly limited.

FASTt installation process overview

The following flow chart gives an overview of the FASTt hardware and the FASTt Storage Manager software installation process. Lined arrows in the flow chart indicate consecutive steps in the hardware and software installation process. Labeled arrows indicate which current documents provide detailed information about those steps.

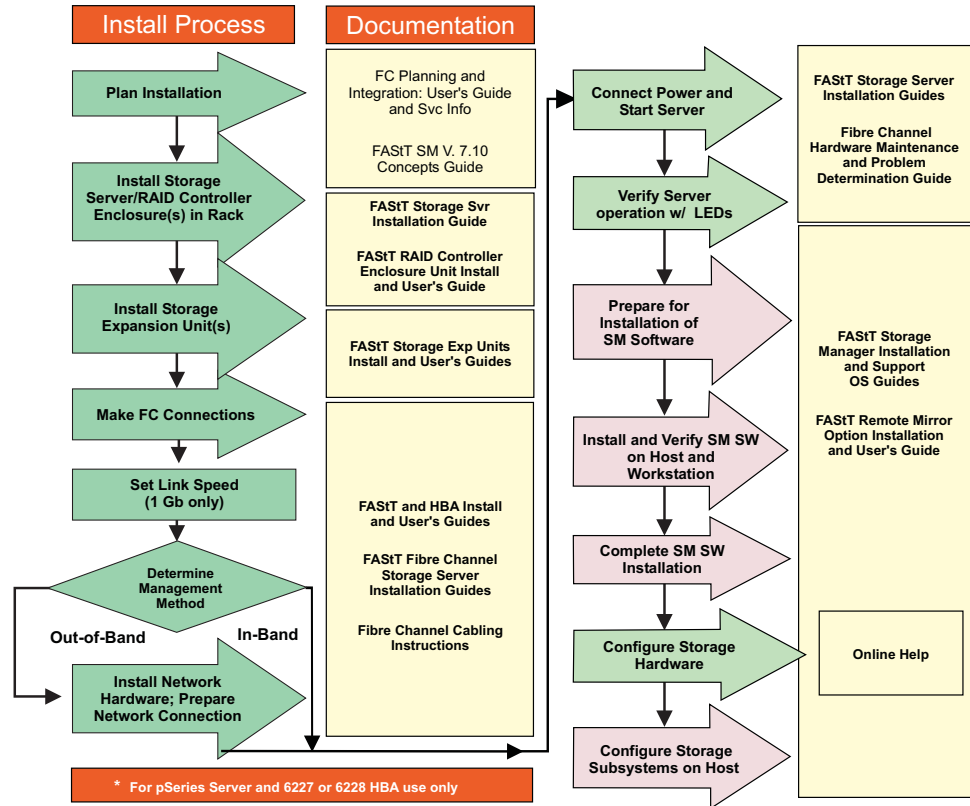


Figure 1. Installation process flow by current publications

FAStT product libraries (document and task)

The following tables present an overview of the FAStT Storage Manager and the FAStT900, FAStT700, FAStT600, FAStT500, and FAStT200 Fibre Channel Storage Server product libraries, as well as other related documents. Each table lists documents that are included in the libraries and what common tasks they address. Click on the links in the tables to access the current release of these documents on the Internet.

FASTt Storage Manager Version 8.3 library

Table 1 associates each document in the FASTt Storage Manager library with its related common user tasks.

Table 1. TotalStorage FASTt Storage Manager Version 8.3 titles by user tasks

| Title | User Tasks | | | | | |
|--|------------|-----------------------|-----------------------|---------------|------------------------------|---------------------------|
| | Planning | Hardware Installation | Software Installation | Configuration | Operation and Administration | Diagnosis and Maintenance |
| IBM TotalStorage FASTt Storage Manager 8.3 Installation and Support Guide for Microsoft Windows NT and Windows 2000, GC26-7522 | ✓ | | ✓ | ✓ | | |
| IBM TotalStorage FASTt Storage Manager 8.3 Installation and Support Guide for Linux, GC26-7519 | ✓ | | ✓ | ✓ | | |
| IBM TotalStorage FASTt Storage Manager 8.3 Installation and Support Guide for Novell NetWare, GC26-7520 | ✓ | | ✓ | ✓ | | |
| IBM TotalStorage FASTt Storage Manager 8.3 Installation and Support Guide for UNIX and AIX Environments, GC26-7521 | ✓ | | ✓ | ✓ | | |
| IBM FASTt Remote Mirror Option Installation and User's Guide, 48P9821 | ✓ | | ✓ | ✓ | ✓ | |
| IBM FASTt Storage Manager Script Commands (see product CD) | | | | ✓ | | |
| IBM FASTt Storage Manager Version 7.10 Concepts Guide, 25P1661 | ✓ | ✓ | ✓ | ✓ | ✓ | ✓ |

FAST900 Fibre Channel Storage Server library

Table 2 associates each document in the FAST900 Fibre Channel Storage Server library with its related common user tasks.

Table 2. TotalStorage FAST900 Fibre Channel Storage Server document titles by user tasks

| Title | User Tasks | | | | | |
|---|------------|-----------------------|-----------------------|---------------|------------------------------|---------------------------|
| | Planning | Hardware Installation | Software Installation | Configuration | Operation and Administration | Diagnosis and Maintenance |
| IBM TotalStorage FAST900 Installation and Support Guide, GC26-7530 | ✓ | ✓ | | ✓ | | |
| IBM TotalStorage FAST900 Fibre Channel Cabling Instructions, 24P8135 | ✓ | ✓ | | | | |
| IBM TotalStorage FAST900 Storage Server User's Guide, GC26-7534 | | | | ✓ | ✓ | ✓ |
| IBM TotalStorage FAST FC2-133 Dual Port Host Bus Adapter Installation and User's Guide, GC26-7532 | | ✓ | | | ✓ | |
| IBM FAST FC2-133 Host Bus Adapter Installation and User's Guide, 48P9823 | | ✓ | | | ✓ | |
| IBM TotalStorage FAST900 Rack Mounting Instructions, 19K0900 | ✓ | ✓ | | | | |
| IBM Fibre Channel Planning and Integration: User's Guide and Service Information, SC23-4329 | ✓ | ✓ | | | ✓ | ✓ |
| IBM FAST Management Suite Java User's Guide, 32P0081 | | | | | ✓ | ✓ |

Table 2. TotalStorage FASt900 Fibre Channel Storage Server document titles by user tasks (continued)

| Title | User Tasks | | | | | |
|--|------------|-----------------------|-----------------------|---------------|------------------------------|---------------------------|
| | Planning | Hardware Installation | Software Installation | Configuration | Operation and Administration | Diagnosis and Maintenance |
| IBM TotalStorage FASt Fibre Channel Hardware Maintenance Manual and Problem Determination Guide, GC26-7528 | | | | | | ✓ |

FAST700 Fibre Channel Storage Server library

Table 3 associates each document in the FAST700 Fibre Channel Storage Server library with its related common user tasks.

Table 3. TotalStorage FAST700 Fibre Channel Storage Server document titles by user tasks

| Title | User Tasks | | | | | |
|---|------------|-----------------------|-----------------------|---------------|------------------------------|---------------------------|
| | Planning | Hardware Installation | Software Installation | Configuration | Operation and Administration | Diagnosis and Maintenance |
| IBM FAST700 Installation and Support Guide, 32P0171 | ✓ | ✓ | | ✓ | | |
| IBM FAST700 Fibre Channel Cabling Instructions, 32P0343 | ✓ | ✓ | | | | |
| IBM FAST700 Fibre Channel Storage Server User's Guide, 32P0341 | | | | ✓ | ✓ | ✓ |
| IBM EXP700 Storage Expansion Unit Installation and User's Guide, 32P0178 | ✓ | ✓ | | ✓ | ✓ | ✓ |
| IBM FAST FC2-133 Dual Port Host Bus Adapter Installation and User's Guide, GC26-7532 | | ✓ | | | ✓ | |
| IBM TotalStorage FAST FC2-133 Host Bus Adapter Installation and User's Guide, 48P9823 | | ✓ | | | ✓ | |
| IBM FAST Management Suite Java User's Guide, 32P0081 | | | | | ✓ | ✓ |
| IBM Fibre Channel Hardware Maintenance Manual, 19K6130 | | | | | | ✓ |
| IBM Fibre Channel Problem Determination Guide, 48P9804 | | | | | | ✓ |

FAST600 Fibre Channel Storage Server library

Table 4 associates each document in the FAST600 Fibre Channel Storage Server library with its related common user tasks.

Table 4. TotalStorage FAST600 Fibre Channel Storage Server document titles by user tasks

| Title | User Tasks | | | | | |
|---|------------|-----------------------|-----------------------|---------------|------------------------------|---------------------------|
| | Planning | Hardware Installation | Software Installation | Configuration | Operation and Administration | Diagnosis and Maintenance |
| IBM TotalStorage FAST600 Fibre Channel Storage Server Installation and User's Guide, GC26-7531 | ✓ | ✓ | | ✓ | | |
| IBM TotalStorage FAST600 Fibre Channel Hardware Maintenance Manual and Problem Determination Guide, GC26-7528 | | | | | | ✓ |
| IBM TotalStorage FAST600 FC2-133 Dual Port Host Bus Adapter Installation and User's Guide, GC26-7532 | | ✓ | | | ✓ | |
| IBM TotalStorage FAST600 Rack Mounting Instructions, 24P8125 | ✓ | ✓ | | | | |
| IBM TotalStorage FAST600 Cabling Instructions, 24P8126 | ✓ | ✓ | | | | |

FAST500 Fibre Channel Storage Server library

Table 5 associates each document in the FAST500 Fibre Channel Storage Server library with its related common user tasks.

Table 5. TotalStorage FAST500 and FAST High Availability Storage Server document titles by user tasks

| Title | User Tasks | | | | | |
|---|------------|-----------------------|-----------------------|---------------|------------------------------|---------------------------|
| | Planning | Hardware Installation | Software Installation | Configuration | Operation and Administration | Diagnosis and Maintenance |
| IBM FAST500 RAID Controller Enclosure Unit User's Guide, 48P9847 | | | | ✓ | ✓ | ✓ |
| IBM FAST EXP500 Storage Expansion Unit Installation and User's Guide, 59P5637 | ✓ | ✓ | | ✓ | ✓ | ✓ |
| IBM FAST500 RAID Controller Enclosure Unit Installation Guide, 59P6244 | | ✓ | | | ✓ | |
| IBM FAST FC2-133 Dual Port Host Bus Adapter Installation and User's Guide, GC26-7532 | | ✓ | | | ✓ | |
| IBM TotalStorage FAST FC2-133 Host Bus Adapter Installation and User's Guide, 48P9823 | | ✓ | | | ✓ | |
| IBM FAST Management Suite Java User's Guide, 32P0081 | | | | | ✓ | ✓ |
| IBM Fibre Channel Hardware Maintenance Manual, 19K6130 | | | | | | ✓ |
| IBM Fibre Channel Problem Determination Guide, 48P9804 | | | | | | ✓ |

FAStT200 Fibre Channel Storage Server library

Table 6 associates each document in the FAStT200 Fibre Channel Storage Server library with its related common user tasks.

Table 6. TotalStorage FAStT200 and FAStT High Availability Storage Server document titles by user tasks

| Title | User Tasks | | | | | |
|---|------------|-----------------------|-----------------------|---------------|------------------------------|---------------------------|
| | Planning | Hardware Installation | Software Installation | Configuration | Operation and Administration | Diagnosis and Maintenance |
| IBM FAStT200 and FAStT200 HA Storage Servers Installation and User's Guide, 59P6243 | ✓ | ✓ | | ✓ | ✓ | |
| IBM FAStT200 Fibre Channel Cabling Instructions, 21P9094 | ✓ | ✓ | | | | |
| IBM FAStT FC2-133 Dual Port Host Bus Adapter Installation and User's Guide, GC26-7532 | | ✓ | | | ✓ | |
| IBM FAStT FC2-133 Host Bus Adapter Installation and User's Guide, 48P9823 | | ✓ | | | ✓ | |
| IBM FAStT Management Suite Java User's Guide, 32P0081 | | | | | ✓ | ✓ |
| IBM Fibre Channel Hardware Maintenance Manual, 19K6130 | | | | | | ✓ |
| IBM Fibre Channel Problem Determination Guide, 48P9804 | | | | | | ✓ |

FASTT related documents

Table 7 associates each of the following documents related to FASTT operations with its related common user tasks.

Table 7. TotalStorage FASTT related document titles by user tasks

| Title | User Tasks | | | | | |
|--|------------|-----------------------|-----------------------|---------------|------------------------------|---------------------------|
| | Planning | Hardware Installation | Software Installation | Configuration | Operation and Administration | Diagnosis and Maintenance |
| IBM Safety Information, P48P9741 | | | | | ✓ | |
| IBM Netfinity® Fibre Channel Cabling Instructions, 19K0906 | | ✓ | | | | |
| IBM Fibre Channel SAN Configuration Setup Guide, 25P2509 | ✓ | | ✓ | ✓ | ✓ | |

Master Index: Storage Manager 8.3 and FAStT600

Numerics

2048 logical drive support SMLINUX-2
6228 HMPD1-3

A

about this document HBAguide-xv, SMUNIX-xi, SMWIN-xi
access logical drive SMNetWare-7, SMWIN-7
Access LUN mapping
 changing SMWIN-88
 defining SMWIN-88
access volume SMNetWare-7
access volume, detecting after host restart SMWIN-82
access volume
 detecting after host restart SMNetWare-55
access volumes SMUNIX-7
acoustical noise emissions values of storage server HMPD1-64, INSTALL-7
active leases window SMLINUX-25
adapter default settings
 >4GByte addressing HBAguide-17
 enable LIP full login HBAguide-18
 enable LIP reset HBAguide-18
 enable target reset HBAguide-18
 execution throttle HBAguide-17
 extended error logging HBAguide-18
 IOCB allocation HBAguide-18
 login retry count HBAguide-18
 LUNs per target HBAguide-17, HBAguide-18
 port down retry count HBAguide-18
adapter
 activity indicators HBAguide-2
 features HBAguide-1
 fibre-channel ports HBAguide-9
 installing HBAguide-5
 overview HBAguide-1
 preinstallation procedures HBAguide-3
 specifications HBAguide-21
 storage temperature HBAguide-21
Adapters, 2Gb HMPD1-3
add devices SMLINUX-43
add
 hosts SMLINUX-43
 storage subsystems SMLINUX-43
adding logical drives SMNetWare-53
adding
 devices SMWIN-71
 logical drives SMWIN-77
Additional Sense Code Qualifier (ASCQ) values HMPD1-268
Additional Sense Codes (ASC) values HMPD1-268
address label, hardware Ethernet INSTALL-59
address, IBM SMWIN-xxii
address
 for e-mail comments SMUNIX-xxi
 for reader comment form SMUNIX-xxi
 of IBM SMUNIX-xxi

address (*continued*)
 of the IBM director of licensing SMUNIX-151
administrator privilege requirements SMLINUX-13
agent software
 package SMUNIX-4
air temperature specifications of storage server HMPD1-64, INSTALL-7
airflow INSTALL-7
AIX HMPD1-3
AIX
 client software SMUNIX-15
 configuration of storage subsystems SMUNIX-16, SMUNIX-21
 direct-attached configuration SMUNIX-19
 firmware
 requirements SMUNIX-13
 upgrading SMUNIX-17
 FlashCopy
 creating a FlashCopy logical drive SMUNIX-110
 reusing a FlashCopy logical drive SMUNIX-113
 hardware requirements SMUNIX-139
 identifying
 controller ID numbers SMUNIX-29
 device names and bus numbers SMUNIX-30
 FlashCopy volume types SMUNIX-35
 logical drives by operating system device names SMUNIX-33
 NVSRAM
 requirements SMUNIX-13
 upgrading SMUNIX-17
 operating system requirements SMUNIX-8, SMUNIX-13
 RDAC driver
 configuring SMUNIX-21
 installing SMUNIX-20, SMUNIX-21
 requirements SMUNIX-20, SMUNIX-139
 verifying SMUNIX-20
 requirements
 client software SMUNIX-15
 firmware SMUNIX-13
 hardware SMUNIX-13, SMUNIX-139
 operating system SMUNIX-8
 RDAC driver SMUNIX-20, SMUNIX-139
 software SMUNIX-139
 system SMUNIX-139
 restrictions SMUNIX-5, SMUNIX-7, SMUNIX-14, SMUNIX-97, SMUNIX-105, SMUNIX-130
 SAN-attached configuration SMUNIX-19
 SMclient SMUNIX-16
 SMruntime SMUNIX-16
 software requirements SMUNIX-139
 system requirements SMUNIX-139
 volumes, redistributing in case of failure SMUNIX-39
alert notifications SMLINUX-44
alert notifications, configuring SMUNIX-77
alert notifications, setting up SMWIN-71
array SMLINUX-4, SMNetWare-4

- array
 - create SMLINUX-46
- arrays, creating SMWIN-73
- assign IP address SMLINUX-21
- assigning
 - IP addresses SMWIN-25
 - static drive letters SMWIN-42
- assistance SMNetWare-xix
- attributes
 - dac SMUNIX-23, SMUNIX-27
 - dar SMUNIX-22, SMUNIX-26
 - definitions SMUNIX-22
 - hdisk SMUNIX-24, SMUNIX-27, SMUNIX-28
 - LUN SMUNIX-24, SMUNIX-27, SMUNIX-28
 - RDAC driver SMUNIX-21
- audience SMWIN-xi
- audience of this document SMUNIX-xi
- auto code synchronization (ACS) HMPD1-360
- Auto Volume Transfer (AVT) SMUNIX-53, SMUNIX-72
- Auto-Volume Transfer SMNetWare-6
- automatic configuration SMLINUX-51
- automatic discovery of storage subsystems SMWIN-68
- automatic host discovery SMLINUX-42, SMWIN-69
- automatic storage subsystem discovery SMLINUX-42, SMWIN-69

B

- base logical drive SMLINUX-47
- battery
 - LED HMPD1-73, INSTALL-44
 - life of HMPD1-73, INSTALL-44
 - recycling properly INSTALL-66
 - replacing HMPD1-73, INSTALL-44, INSTALL-65
 - voltage of HMPD1-73, INSTALL-44
- before you begin SMNetWare-i
- bezel
 - remove SMLINUX-19
 - replace SMLINUX-21
- BIOS code updates HBAguide-9
- boot-up delay HMPD1-296
- BOOTP server
 - BOOTP table SMWIN-35
 - setting up SMWIN-31
 - UNIX SMLINUX-32, SMNetWare-36, SMWIN-35
 - using Microsoft DHCP SMLINUX-22, SMLINUX-25
- BOOTP table SMLINUX-32, SMNetWare-36
- BOOTP-compatible server, set up SMLINUX-21
- BOOTP-compatible server, setting up SMWIN-25
- brackets
 - installation HBAguide-5
 - removal HBAguide-5
- bus numbers and device names, identifying
 - SMUNIX-30, SMUNIX-52

C

- cables
 - attaching HBAguide-5
 - connecting the LC-LC HBAguide-6
 - routing HBAguide-5

- cabling instructions SMLINUX-xi, SMNetWare-xi, SMUNIX-xi, SMWIN-xi
- cabling the storage server
 - connecting expansion unit INSTALL-31
 - connecting host to RAID controller INSTALL-29
 - connecting power cables INSTALL-30
 - connecting secondary interface cables INSTALL-30
- cache battery
 - See also* battery
 - See* battery INSTALL-44
- cache memory
 - cache active LED HMPD1-73, INSTALL-43
 - size of HMPD1-72, INSTALL-43
- calling for assistance SMNetWare-xix
- capture state information feature SMLINUX-46, SMNetWare-50, SMUNIX-79, SMWIN-73
- catastrophic failure SMLINUX-46, SMNetWare-50, SMUNIX-79
- changing the host type SMUNIX-73
- Class A electronic emission notice HMPD1-472, INSTALL-77
- client software
 - AIX SMUNIX-15, SMUNIX-16
 - HP-UX SMUNIX-42, SMUNIX-43
 - HP-UX
 - installing SMUNIX-42
 - package SMUNIX-3, SMUNIX-4
 - Solaris SMUNIX-57, SMUNIX-58
 - Solaris
 - uninstalling SMUNIX-61
- cluster configuration SMNetWare-12
- cluster configuration, upgrading from Windows NT 4.0 to Windows 2000 SMWIN-64
- cluster environment, installing Storage Manager SMWIN-51
- cluster server configuration SMNetWare-11
- cluster server configuration
 - for Windows 2000 SMWIN-79
 - for Windows NT SMWIN-77
- cluster server environment
 - hardware configuration options SMWIN-49
 - host adapters SMWIN-50
 - installing hardware SMWIN-49
 - installing software SMWIN-49
 - storage subsystems SMWIN-51
- cluster server support INSTALL-2
- cluster server
 - software, installing SMWIN-59
 - software, verifying installation SMWIN-60
- cluster services
 - AIX requirements SMUNIX-83, SMUNIX-84
 - configurations SMUNIX-74
 - HACMP ES and ESCRM SMUNIX-81
 - hardware requirements SMUNIX-82
 - HP-UX requirements SMUNIX-81
 - MC/Service Guard SMUNIX-81
 - PSSP with GPFS SMUNIX-81
 - Solaris requirements SMUNIX-81, SMUNIX-83
 - system dependencies SMUNIX-81
 - Veritas Cluster Server SMUNIX-81
 - Veritas Volume Manager SMUNIX-81, SMUNIX-82

- coexisting storage subsystem management
 - SMLINUX-10
- coexisting storage subsystems, managing SMWIN-15
- command-line interface (CLI) SMLINUX-2
- commands
 - fget_config SMUNIX-32
 - lsattr SMUNIX-33
 - lsdev SMUNIX-31
- comment on this document SMNetWare-xxi
- comments about this document, how to send SMUNIX-xxi
- comments, how to send HBAguide-xxv, HMPD1-xxxvi, INSTALL-xxv, SMWIN-xxii
- common path configurations HMPD1-263
- complete SM SW installation SMLINUX-xi, SMNetWare-xi, SMUNIX-xi, SMWIN-xi
- completing the installation SMWIN-67
- components, storage server
 - back view HMPD1-66, INSTALL-5
 - front view HMPD1-64, INSTALL-4
 - hard disk drives INSTALL-45
 - hot-swap fans INSTALL-53
 - power supply INSTALL-55
 - RAID controller INSTALL-59
- concepts guide SMLINUX-xi, SMNetWare-xi, SMUNIX-xi, SMWIN-xi
- configuration debugging HMPD1-281
- configuration details, MC Service Guard SMUNIX-145
- configuration options, installing hardware in a cluster server environment SMWIN-49
- configuration recovery SMLINUX-46, SMNetWare-50, SMUNIX-79, SMWIN-73
- configuration types
 - cluster server configuration SMWIN-12
 - debugging example sequence HMPD1-282
 - diagnostics and examples HMPD1-281
 - installing storage manager 7.02 SMWIN-11
 - standard SMNetWare-11
 - standard (noncluster) configuration SMWIN-11
 - type 1 HMPD1-279
 - type 2 HMPD1-280
- configuration, installing the storage subsystem INSTALL-24
- configure heterogeneous host SMLINUX-48
- configure storage hardware SMLINUX-xi, SMNetWare-xi, SMUNIX-xi, SMWIN-xi
- configure storage subsystems on host SMLINUX-xi, SMNetWare-xi, SMUNIX-xi, SMWIN-xi
- configuring heterogeneous hosts SMWIN-74
- configuring
 - alert notifications SMUNIX-77
 - direct-attached SMUNIX-19, SMUNIX-48, SMUNIX-64
 - RDAC driver SMUNIX-21, SMUNIX-82
 - SAN-attached SMUNIX-19, SMUNIX-48, SMUNIX-64
 - Solaris with JNI host bus adapter cards SMUNIX-65, SMUNIX-66
 - storage subsystems
 - AIX SMUNIX-16, SMUNIX-19
 - HP-UX SMUNIX-46, SMUNIX-48

- configuring (*continued*)
 - storage subsystems (*continued*)
 - procedures SMUNIX-74
 - Solaris SMUNIX-61, SMUNIX-64
- connect power SMLINUX-xi, SMNetWare-xi, SMUNIX-xi, SMWIN-xi
- controller diagnostics HMPD1-315
- controller host name SMLINUX-32
- controller information record SMWIN-89
- controller state capture SMLINUX-46, SMNetWare-50, SMUNIX-79, SMWIN-73
- controller
 - IP address SMLINUX-18, SMNetWare-23
- controllers
 - firmware SMUNIX-1, SMUNIX-20, SMUNIX-46, SMUNIX-62
 - ID numbers, identifying SMUNIX-29, SMUNIX-51
 - IP addresses SMUNIX-8
 - properties SMUNIX-51
- cooling INSTALL-7
- create arrays and logical drives SMLINUX-46
- create FlashCopy logical drive SMLINUX-47
- creating
 - a FlashCopy logical drive SMWIN-79
 - arrays and logical drives SMNetWare-50, SMWIN-73
 - logical drives SMNetWare-53, SMWIN-77, SMWIN-78
- crossPortTest HMPD1-335, HMPD1-341

D

- dac attributes SMUNIX-23, SMUNIX-27
- dar attributes SMUNIX-22, SMUNIX-26
- data sheet SMWIN-89
- DCE (dynamic capacity expansion) SMUNIX-36
- default host type, verifying and defining SMWIN-74
- default host type
 - define SMLINUX-48
- default IP address SMLINUX-3
- default partitioning, Solaris devices SMUNIX-63
- define default host type SMLINUX-48
- defining default host type SMWIN-74
- delete logical drive SMLINUX-47
- deleting logical drives SMNetWare-53, SMWIN-77, SMWIN-79
- determine management method SMLINUX-xi, SMNetWare-xi, SMUNIX-xi, SMWIN-xi
- device drivers HBAguide-14
- device drivers, latest SMNetWare-xx
- device drivers
 - download SMNetWare-xx
 - IBM FASiT Host Adapter
 - Linux (QLa2x00) SMNetWare-6
 - NetWare (QL2x00) SMLINUX-6
 - IBMSAN SMNetWare-6
- devices, handling static-sensitive HBAguide-4
- devices
 - identification SMUNIX-28
 - names and bus numbers, identifying SMUNIX-30, SMUNIX-52
 - Solaris, default partitioning for SMUNIX-63

DHCP BOOTP server SMLINUX-17, SMNetWare-21
 DHCP Manager, install SMLINUX-22
 DHCP server, setting up SMWIN-31
 DHCP server
 Novell NetWare SMLINUX-29
 object SMLINUX-30
 set global options SMLINUX-23
 set up SMLINUX-21
 Windows 2000 SMLINUX-26
 Windows NT SMLINUX-22
 DHCP-compatible server, setting up SMWIN-25
 DHCP/BOOTP server SMNetWare-7, SMWIN-9
 DHCP/BOOTP server
 setting up SMLINUX-27, SMNetWare-32
 diagnostic interface port HMPD1-67, INSTALL-6,
 INSTALL-30
 dimensions of storage server HMPD1-64, INSTALL-7
 direct (out-of-band) management SMLINUX-6
 direct (out-of-band) management method SMUNIX-7
 direct management method SMNetWare-8
 direct-attached configuration SMUNIX-19, SMUNIX-48,
 SMUNIX-64
 direct-managed storage subsystem
 information record SMLINUX-18
 direct-managed storage subsystems SMLINUX-17
 direct-management method INSTALL-19
 direct-management method workaround SMWIN-87
 direct-management storage subsystems SMWIN-7
 disable Fibre Channel drive-level write caching
 SMNetWare-1
 disable fibre-channel drive-level write caching
 SMLINUX-2
 discussion forums SMNetWare-xx
 Disk Administrator utility
 deleting LUNs SMWIN-77, SMWIN-79
 disk configuration SMWIN-42, SMWIN-55
 disk configuration information SMLINUX-46,
 SMNetWare-50, SMUNIX-79
 disk space requirements SMLINUX-13
 DNS domain name SMLINUX-23
 DNS Server SMLINUX-23
 DNS table setup SMLINUX-32
 DNS/DHCP management console SMLINUX-29
 document organization SMWIN-xx
 documentation checklist INSTALL-2
 documentation use SMLINUX-xx
 documentation, using SMWIN-xxi
 documentation
 documents SMUNIX-1
 FASTt SMLINUX-xii, SMNetWare-xii, SMUNIX-xii,
 SMWIN-xii
 FASTt related HBAguide-xxii, HMPD1-xxxiv,
 INSTALL-xxii
 FASTt Storage Manager HBAguide-xvi,
 HMPD1-xxviii, INSTALL-xvi
 FASTt Storage Manager Version 8.3 SMLINUX-xiii,
 SMNetWare-xiii, SMUNIX-xiii, SMWIN-xiii
 FASTt Storage Manager Version 8.3
 for Linux SMLINUX-xiii, SMNetWare-xiii,
 SMUNIX-xiii, SMWIN-xiii
 documentation (*continued*)
 FASTt Storage Manager Version 8.3 (*continued*)
 for Microsoft Windows 2000 SMLINUX-xiii,
 SMNetWare-xiii, SMUNIX-xiii, SMWIN-xiii
 for Microsoft Windows NT SMLINUX-xiii,
 SMNetWare-xiii, SMUNIX-xiii, SMWIN-xiii
 for Novell NetWare SMLINUX-xiii,
 SMNetWare-xiii, SMUNIX-xiii, SMWIN-xiii
 for UNIX and AIX environments SMLINUX-xiii,
 SMNetWare-xiii, SMUNIX-xiii, SMWIN-xiii
 FASTt Storage Manager
 Concepts Guide SMLINUX-xiii, SMNetWare-xiii,
 SMUNIX-xiii, SMWIN-xiii
 Remote Mirror Option SMLINUX-xiii,
 SMNetWare-xiii, SMUNIX-xiii, SMWIN-xiii
 Script Commands SMLINUX-xiii, SMNetWare-xiii,
 SMUNIX-xiii, SMWIN-xiii
 FASTt200 HBAguide-xxi, HMPD1-xxxiii,
 INSTALL-xxi
 FASTt200
 FC cabling instructions SMLINUX-xviii,
 SMNetWare-xviii, SMUNIX-xviii, SMWIN-xviii
 FC2-133 dual port host bus adapter installation
 and user's guide SMLINUX-xviii,
 SMNetWare-xviii, SMUNIX-xviii, SMWIN-xviii
 FC2-133 host bus adapter installation and user's
 guide SMLINUX-xviii, SMNetWare-xviii,
 SMUNIX-xviii, SMWIN-xviii
 Fibre Channel hardware maintenance manual
 SMLINUX-xviii, SMNetWare-xviii, SMUNIX-xviii,
 SMWIN-xviii
 Fibre Channel problem determination guide
 SMLINUX-xviii, SMNetWare-xviii, SMUNIX-xviii,
 SMWIN-xviii
 Management Suite Java user's guide
 SMLINUX-xviii, SMNetWare-xviii, SMUNIX-xviii,
 SMWIN-xviii
 Storage Server installation and user's guide
 SMLINUX-xviii, SMNetWare-xviii, SMUNIX-xviii,
 SMWIN-xviii
 FASTt500 HBAguide-xx, HMPD1-xxxii, INSTALL-xx
 FASTt500
 EXP500 Storage Expansion unit installation and
 user's guide SMLINUX-xvii, SMNetWare-xvii,
 SMUNIX-xvii, SMWIN-xvii
 FC2-133 dual port host bus adapter installation
 and user's guide SMLINUX-xvii,
 SMNetWare-xvii, SMUNIX-xvii, SMWIN-xvii
 FC2-133 host bus adapter installation and user's
 guide SMLINUX-xvii, SMNetWare-xvii,
 SMUNIX-xvii, SMWIN-xvii
 Fibre Channel hardware maintenance manual
 SMLINUX-xvii, SMNetWare-xvii, SMUNIX-xvii,
 SMWIN-xvii
 Fibre Channel problem determination guide
 SMLINUX-xvii, SMNetWare-xvii, SMUNIX-xvii,
 SMWIN-xvii
 Management Suite Java user's guide
 SMLINUX-xvii, SMNetWare-xvii, SMUNIX-xvii,
 SMWIN-xvii

documentation (*continued*)

FAST500 (*continued*)

RAID Controller Enclosure Unit installation guide
SMLINUX–xvii, SMNetWare–xvii, SMUNIX–xvii,
SMWIN–xvii

RAID Controller Enclosure Unit user’s guide
SMLINUX–xvii, SMNetWare–xvii, SMUNIX–xvii,
SMWIN–xvii

FAST600 HBAguide–xix, HMPD1–xxx, INSTALL–xix
FAST600

FC storage server installation and user’s guide
SMLINUX–xvi, SMNetWare–xvi, SMUNIX–xvi,
SMWIN–xvi

FC2-133 dual port host bus adapter installation
and user’s guide SMLINUX–xvi,
SMNetWare–xvi, SMUNIX–xvi, SMWIN–xvi

Fibre Channel cabling instructions SMLINUX–xvi,
SMNetWare–xvi, SMUNIX–xvi, SMWIN–xvi

Fibre Channel hardware maintenance manual and
problem determination guide SMLINUX–xvi,
SMNetWare–xvi, SMUNIX–xvi, SMWIN–xvi
rack mounting instructions SMLINUX–xvi,
SMNetWare–xvi, SMUNIX–xvi, SMWIN–xvi

FAST700 HBAguide–xviii, HMPD1–xxx,
INSTALL–xviii

FAST700

EXP700 Storage Expansion Unit installation and
user’s guide SMLINUX–xv, SMNetWare–xv,
SMUNIX–xv, SMWIN–xv

FC2-133 dual port host bus adapter installation
and user’s guide SMLINUX–xv, SMNetWare–xv,
SMUNIX–xv, SMWIN–xv

FC2-133 host bus adapter installation and user’s
guide SMLINUX–xv, SMNetWare–xv,
SMUNIX–xv, SMWIN–xv

Fibre Channel cabling instructions SMLINUX–xv,
SMNetWare–xv, SMUNIX–xv, SMWIN–xv

Fibre Channel hardware maintenance manual
SMLINUX–xv, SMNetWare–xv, SMUNIX–xv,
SMWIN–xv

Fibre Channel problem determination guide
SMLINUX–xv, SMNetWare–xv, SMUNIX–xv,
SMWIN–xv

installation and support guide SMLINUX–xv,
SMNetWare–xv, SMUNIX–xv, SMWIN–xv

Management Suite Java user’s guide
SMLINUX–xv, SMNetWare–xv, SMUNIX–xv,
SMWIN–xv

storage server user’s guide SMLINUX–xv,
SMNetWare–xv, SMUNIX–xv, SMWIN–xv

FAST900 HBAguide–xvii, HMPD1–xxix,
INSTALL–xvii

FAST900

FC2-133 dual port host bus adapter installation
and user’s guide SMLINUX–xiv, SMNetWare–xiv,
SMUNIX–xiv, SMWIN–xiv

FC2-133 host bus adapter installation and user’s
guide SMLINUX–xiv, SMNetWare–xiv,
SMUNIX–xiv, SMWIN–xiv

Fibre Channel cabling instructions SMLINUX–xiv,
SMNetWare–xiv, SMUNIX–xiv, SMWIN–xiv

documentation (*continued*)

FAST900 (*continued*)

Fibre Channel hardware maintenance manual and
problem determination guide SMLINUX–xiv,
SMNetWare–xiv, SMUNIX–xiv, SMWIN–xiv

Fibre Channel planning and integration: user’s
guide and service information SMLINUX–xiv,
SMNetWare–xiv, SMUNIX–xiv, SMWIN–xiv

installation and support guide SMLINUX–xiv,
SMNetWare–xiv, SMUNIX–xiv, SMWIN–xiv

Management Suite Java user’s guide
SMLINUX–xiv, SMNetWare–xiv, SMUNIX–xiv,
SMWIN–xiv

rack mounting instructions SMLINUX–xiv,
SMNetWare–xiv, SMUNIX–xiv, SMWIN–xiv

storage server user’s guide SMLINUX–xiv,
SMNetWare–xiv, SMUNIX–xiv, SMWIN–xiv

files SMUNIX–1

online help SMUNIX–xx, SMUNIX–1, SMUNIX–76,
SMUNIX–78

related SMLINUX–xix, SMNetWare–xix, SMUNIX–xix,
SMWIN–xix

Web sites SMUNIX–xx, SMUNIX–1

download firmware SMLINUX–45

download NVSRAM SMLINUX–46

downloading firmware SMNetWare–49

downloading firmware and NVSRAM SMWIN–72

downloading NVSRAM SMNetWare–50

drive group SMLINUX–4, SMNetWare–4

drive speed, 1 Gb per second SMLINUX–51

drive-level write caching SMLINUX–2, SMNetWare–1

drive, hard disk

adding larger-capacity INSTALL–49

filler panel INSTALL–46

installing hot-swap INSTALL–46

LEDs HMPD1–69, INSTALL–40

overview INSTALL–45

replacing all at same time INSTALL–49, INSTALL–50

replacing hot-swap INSTALL–48

replacing one at a time INSTALL–49, INSTALL–52

slim INSTALL–46

driver SMLINUX–35

driver, device SMNetWare–6

dump function diagnostics SMLINUX–2, SMNetWare–2

DVE (dynamic volume expansion) SMUNIX–36

dynamic capacity expansion (DCE) SMUNIX–36

Dynamic Host Configuration Protocol (DHCP)
SMNetWare–7

dynamic logical-drive expansion SMLINUX–2

dynamic volume expansion (DVE) SMUNIX–36

E

e-mail address SMNetWare–xxi, SMUNIX–xxi,
SMUNIX–77

e-mail address

alert notification SMLINUX–44

e-mail notification of technical updates SMNetWare–xx

edition notice SMUNIX–ii

electrical input specifications of storage server

HMPD1–64, INSTALL–7

electrical safety HBAguide–xi

- electronic emission Class A notice HMPD1–472, INSTALL–77
- electrostatic discharge, preventing INSTALL–3
- emergency shutdown
 - performing INSTALL–38
 - restoring power INSTALL–38
- enabling multipath I/O with PV-links SMUNIX–49
- Enterprise Management window SMLINUX–5, SMNetWare–5
- Enterprise Management window
 - adding devices SMLINUX–43, SMWIN–71
 - alert notifications SMLINUX–44, SMNetWare–48, SMWIN–71
 - component of SMclient SMWIN–5
 - description SMUNIX–4
 - help SMWIN–1
 - Help SMLINUX–1, SMNetWare–1
 - online help SMUNIX–1
 - setting up alert notifications SMNetWare–48
 - starting SMUNIX–74
- Environmental Services Monitor (ESM) SMLINUX–1, SMNetWare–1
- environmental specifications of storage server HMPD1–64, INSTALL–7
- ESD-sensitive devices, handling HBAguide–xii
- ESM (Environmental Services Monitor) SMLINUX–1, SMNetWare–1
- Ethernet address SMLINUX–32
- Ethernet MAC address SMLINUX–19, SMNetWare–24
- Ethernet MAC address, identifying SMWIN–23
- Ethernet
 - address label on RAID controller INSTALL–59
 - connecting to RAID controller INSTALL–30
 - ports HMPD1–67, INSTALL–6
- Event Monitor HMPD1–146
- Event Monitor, verifying installation SMWIN–54
- Event Monitor
 - disable SMLINUX–37
- existing storage subsystem SMLINUX–9, SMNetWare–12, SMWIN–12
- existing storage subsystem
 - operating system requirements SMWIN–16
 - system hardware requirements SMWIN–16
 - uninstall SMLINUX–35
- EXP15
 - additional service information HMPD1–103
 - diagnostics and test information HMPD1–103
 - symptom-to-FRU index HMPD1–106
- EXP200
 - additional service information HMPD1–103
 - diagnostics and test information HMPD1–103
 - symptom-to-FRU index HMPD1–106
- EXP500
 - additional service information HMPD1–109
 - parts listing HMPD1–115
 - symptom-to-FRU index HMPD1–113
- EXP700 support SMLINUX–2
- EXP700
 - diagnostics and test information HMPD1–119
 - general checkout HMPD1–117
 - operating specifications HMPD1–118

- EXP700 (*continued*)
 - parts listing HMPD1–122
 - symptom-to-FRU index HMPD1–121
- expansion unit
 - connecting to storage server INSTALL–31
 - turning on before storage server INSTALL–35, INSTALL–51
- extended firmware settings
 - connection options HBAguide–19
 - data rate HBAguide–19
 - fibre channel tape support HBAguide–19
 - interrupt delay timer HBAguide–19
 - RIO operation mode HBAguide–19

F

- fabric switches SMLINUX–12, SMNetWare–16, SMNetWare–17, SMWIN–17
- failure support
 - cluster services SMUNIX–81
 - RDAC driver SMUNIX–5
 - redistributing volumes SMUNIX–39, SMUNIX–53, SMUNIX–72
- fan
 - LEDs INSTALL–43
 - overview INSTALL–53
 - replacing INSTALL–54
- Fast!UTIL options
 - restore default settings HBAguide–17, HBAguide–19, HBAguide–20
- Fast!UTIL settings
 - host adapter settings HBAguide–15
 - selectable boot settings HBAguide–17
 - using HBAguide–15
- Fast!UTIL, starting HBAguide–15
- Fast!UTIL
 - options
 - advanced adapter settings HMPD1–351
 - extended firmware settings HMPD1–354
 - raw NVRAM data HMPD1–351
 - restore default settings HMPD1–351
 - scan fibre channel devices HMPD1–355
 - scan Loopback Data Test HMPD1–355
 - select host adapter HMPD1–356
 - settings
 - host adapter settings HMPD1–349
 - options HMPD1–349
 - selectable boot settings HMPD1–351
 - starting HMPD1–349
 - using HMPD1–349
- FASTt documentation SMLINUX–xii, SMNetWare–xii, SMUNIX–xii, SMWIN–xii
- FASTt FC2-133 and FASTt FC2-133 Duplex Host Bus Adapters
 - additional service information HMPD1–20
 - general checkout HMPD1–19
 - installation problems HMPD1–19
 - operating environment HMPD1–20
 - overview HMPD1–19
 - specifications HMPD1–20, HMPD1–21

FASTt Host Adapter
 additional service information HMPD1–16
 general checkout HMPD1–15
 FASTt installation process overview HBAguide–xv,
 HMPD1–xxvii
 FASTt installation process, overview INSTALL–xv
 FASTt Management Suite Java SMLINUX–1,
 SMLINUX–6, SMNetWare–1, SMNetWare–6,
 SMWIN–1
 FASTt MSJ
 adapter information HMPD1–200
 client interface HMPD1–188
 configuring HMPD1–195
 configuring Linux ports HMPD1–318
 connecting to hosts HMPD1–196
 determining the configuration HMPD1–293
 diagnostic and utility features HMPD1–198
 disconnecting from hosts HMPD1–197
 event and alarm logs HMPD1–199
 features overview HMPD1–194
 host agent HMPD1–189
 host configuration file HMPD1–228
 installation HMPD1–189
 installation procedure SMLINUX–38
 loopback test HMPD1–210
 main window HMPD1–194
 NVRAM settings HMPD1–204
 overview HMPD1–146
 persistent configuration data HMPD1–227
 polling intervals HMPD1–197
 port configuration HMPD1–216
 read/write buffer test HMPD1–210
 security HMPD1–197
 starting HMPD1–193
 system requirements HMPD1–188
 uninstall procedure SMLINUX–38
 uninstalling HMPD1–192
 Utilities panel HMPD1–209
 viewing information HMPD1–226
 FASTt related documents HBAguide–xxii, HMPD1–xxxiv,
 INSTALL–xxii
 FASTt SANavigator SMWIN–1
 FASTt Storage Manager Field Tool SMLINUX–46,
 SMNetWare–50, SMUNIX–79, SMWIN–73
 FASTt Storage Manager Version 8.3 library
 HBAguide–xvi, HMPD1–xxviii, INSTALL–xvi
 FASTt Storage Manager
 auto code synchronization HMPD1–360
 FAQs HMPD1–357
 global hot spare (GHS) drives HMPD1–357
 overview HMPD1–146
 related documents SMLINUX–xix, SMNetWare–xix,
 SMUNIX–xix, SMWIN–xix
 related documents
 IBM FC SAN Configuration Setup Guide
 SMLINUX–xix, SMNetWare–xix, SMUNIX–xix,
 SMWIN–xix
 IBM Safety Information SMLINUX–xix,
 SMNetWare–xix, SMUNIX–xix, SMWIN–xix
 Netfinity FC Cabling Instructions SMLINUX–xix,
 SMNetWare–xix, SMUNIX–xix, SMWIN–xix
 FASTt Storage Manager (*continued*)
 storage partitioning HMPD1–363
 user tasks SMLINUX–xiii, SMNetWare–xiii,
 SMUNIX–xiii, SMWIN–xiii
 Version 8.3 library SMLINUX–xiii, SMNetWare–xiii,
 SMUNIX–xiii, SMWIN–xiii
 FASTt-MSJ SMLINUX–1, SMNetWare–1, SMWIN–1
 FASTt, introduction to SMUNIX–8
 FASTt200 and FASTt200 HA, Type 3542
 additional service information HMPD1–37,
 HMPD1–64
 diagnostics HMPD1–41, HMPD1–68
 general checkout HMPD1–37, HMPD1–63
 parts listing HMPD1–47, HMPD1–76
 symptom-to-FRU index HMPD1–46, HMPD1–74
 FASTt200 Fibre Channel Storage Server library
 HBAguide–xxi, HMPD1–xxxiii, INSTALL–xxi
 FASTt200 HA Storage Server library SMLINUX–xviii,
 SMNetWare–xviii, SMUNIX–xviii, SMWIN–xviii
 FASTt200 Storage Server library SMLINUX–xviii,
 SMNetWare–xviii, SMUNIX–xviii, SMWIN–xviii
 FASTt200
 FC cabling instructions SMLINUX–xviii,
 SMNetWare–xviii, SMUNIX–xviii, SMWIN–xviii
 FC2-133 dual port host bus adapter installation and
 user's guide SMLINUX–xviii, SMNetWare–xviii,
 SMUNIX–xviii, SMWIN–xviii
 FC2-133 host bus adapter installation and user's
 guide SMLINUX–xviii, SMNetWare–xviii,
 SMUNIX–xviii, SMWIN–xviii
 Fibre Channel hardware maintenance manual
 SMLINUX–xviii, SMNetWare–xviii, SMUNIX–xviii,
 SMWIN–xviii
 Fibre Channel problem determination guide
 SMLINUX–xviii, SMNetWare–xviii, SMUNIX–xviii,
 SMWIN–xviii
 Management Suite Java user's guide SMLINUX–xviii,
 SMNetWare–xviii, SMUNIX–xviii, SMWIN–xviii
 Storage Server installation and user's guide
 SMLINUX–xviii, SMNetWare–xviii, SMUNIX–xviii,
 SMWIN–xviii
 FASTt500 Fibre Channel Storage Server library
 HBAguide–xx, HMPD1–xxxii, INSTALL–xx
 FASTt500 Storage Server library SMLINUX–xvii,
 SMNetWare–xvii, SMUNIX–xvii, SMWIN–xvii
 FASTt500
 EXP500 Storage Expansion unit installation and
 user's guide SMLINUX–xvii, SMNetWare–xvii,
 SMUNIX–xvii, SMWIN–xvii
 FC2-133 dual port host bus adapter installation and
 user's guide SMLINUX–xvii, SMNetWare–xvii,
 SMUNIX–xvii, SMWIN–xvii
 FC2-133 host bus adapter installation and user's
 guide SMLINUX–xvii, SMNetWare–xvii,
 SMUNIX–xvii, SMWIN–xvii
 Fibre Channel hardware maintenance manual
 SMLINUX–xvii, SMNetWare–xvii, SMUNIX–xvii,
 SMWIN–xvii
 Fibre Channel problem determination guide
 SMLINUX–xvii, SMNetWare–xvii, SMUNIX–xvii,
 SMWIN–xvii

FAST500 (continued)
 Management Suite Java user's guide SMLINUX–xvii, SMNetWare–xvii, SMUNIX–xvii, SMWIN–xvii
 RAID Controller Enclosure Unit installation guide SMLINUX–xvii, SMNetWare–xvii, SMUNIX–xvii, SMWIN–xvii
 RAID Controller Enclosure Unit user's guide SMLINUX–xvii, SMNetWare–xvii, SMUNIX–xvii, SMWIN–xvii
FAST600 FC Storage Server library SMLINUX–xvi, SMNetWare–xvi, SMUNIX–xvi, SMWIN–xvi
FAST600 Fibre Channel Storage Server library HBAguide–xix, HMPD1–xxxi, INSTALL–xix
FAST600 restrictions SMLINUX–4, SMNetWare–3
FAST600
 FC storage server installation and user's guide SMLINUX–xvi, SMNetWare–xvi, SMUNIX–xvi, SMWIN–xvi
 FC2-133 dual port host bus adapter installation and user's guide SMLINUX–xvi, SMNetWare–xvi, SMUNIX–xvi, SMWIN–xvi
 Fibre Channel cabling instructions SMLINUX–xvi, SMNetWare–xvi, SMUNIX–xvi, SMWIN–xvi
 Fibre Channel hardware maintenance manual and problem determination guide SMLINUX–xvi, SMNetWare–xvi, SMUNIX–xvi, SMWIN–xvi
 rack mounting instructions SMLINUX–xvi, SMNetWare–xvi, SMUNIX–xvi, SMWIN–xvi
 restrictions SMUNIX–3, SMUNIX–8, SMUNIX–19, SMUNIX–20, SMUNIX–41, SMUNIX–64, SMUNIX–65, SMUNIX–81, SMUNIX–83, SMUNIX–84, SMUNIX–93, SMUNIX–141, SMUNIX–145
FAST700 Fibre Channel Storage Server library HBAguide–xviii, HMPD1–xxx, INSTALL–xviii
FAST700 Storage Server library SMLINUX–xv, SMNetWare–xv, SMUNIX–xv, SMWIN–xv
FAST700
 EXP700 Storage Expansion Unit installation and user's guide SMLINUX–xv, SMNetWare–xv, SMUNIX–xv, SMWIN–xv
 FC2-133 dual port host bus adapter installation and user's guide SMLINUX–xv, SMNetWare–xv, SMUNIX–xv, SMWIN–xv
 FC2-133 host bus adapter installation and user's guide SMLINUX–xv, SMNetWare–xv, SMUNIX–xv, SMWIN–xv
 Fibre Channel cabling instructions SMLINUX–xv, SMNetWare–xv, SMUNIX–xv, SMWIN–xv
 Fibre Channel hardware maintenance manual SMLINUX–xv, SMNetWare–xv, SMUNIX–xv, SMWIN–xv
 Fibre Channel problem determination guide SMLINUX–xv, SMNetWare–xv, SMUNIX–xv, SMWIN–xv
 installation and support guide SMLINUX–xv, SMNetWare–xv, SMUNIX–xv, SMWIN–xv
 Management Suite Java user's guide SMLINUX–xv, SMNetWare–xv, SMUNIX–xv, SMWIN–xv
 storage server user's guide SMLINUX–xv, SMNetWare–xv, SMUNIX–xv, SMWIN–xv
FAST900 FC Storage Server library SMLINUX–xiv, SMNetWare–xiv, SMUNIX–xiv, SMWIN–xiv
FAST900 Fibre Channel Storage Server library HBAguide–xvii, HMPD1–xxix, INSTALL–xvii
FAST900
 FC2-133 dual port host bus adapter installation and user's guide SMLINUX–xiv, SMNetWare–xiv, SMUNIX–xiv, SMWIN–xiv
 FC2-133 host bus adapter installation and user's guide SMLINUX–xiv, SMNetWare–xiv, SMUNIX–xiv, SMWIN–xiv
 Fibre Channel cabling instructions SMLINUX–xiv, SMNetWare–xiv, SMUNIX–xiv, SMWIN–xiv
 Fibre Channel hardware maintenance manual and problem determination guide SMLINUX–xiv, SMNetWare–xiv, SMUNIX–xiv, SMWIN–xiv
 Fibre Channel planning and integration: user's guide and service information SMLINUX–xiv, SMNetWare–xiv, SMUNIX–xiv, SMWIN–xiv
 installation and support guide SMLINUX–xiv, SMNetWare–xiv, SMUNIX–xiv, SMWIN–xiv
 Management Suite Java user's guide SMLINUX–xiv, SMNetWare–xiv, SMUNIX–xiv, SMWIN–xiv
 rack mounting instructions SMLINUX–xiv, SMNetWare–xiv, SMUNIX–xiv, SMWIN–xiv
 user's guide SMLINUX–xiv, SMNetWare–xiv, SMUNIX–xiv, SMWIN–xiv
 fax number SMNetWare–xxi
 FC cabling instructions SMLINUX–xi, SMNetWare–xi, SMUNIX–xi, SMWIN–xi
 FC HW maintenance and problem determination guide SMLINUX–xi, SMNetWare–xi, SMUNIX–xi, SMWIN–xi
 FC planning and integration user's guide and service information SMLINUX–xi, SMNetWare–xi, SMUNIX–xi, SMWIN–xi
 FC storage server installation guide SMLINUX–xi, SMNetWare–xi, SMUNIX–xi, SMWIN–xi
 FCC Class A notice HMPD1–472, INSTALL–77
 features of the storage server INSTALL–1
 fget_config command SMUNIX–32
 fiber-optic cable
 handling INSTALL–25
 installing INSTALL–28
 removing INSTALL–29
 working with INSTALL–25
 Fibre Channel PCI adapter
 additional service information HMPD1–13
 general checkout HMPD1–13
 fibre channel problems HBAguide–24
 fibre channel, overview HBAguide–1
 fibre channel
 connections INSTALL–19
 loop configurations INSTALL–20
Fibre Channel
 Concepts Guide SMWIN–1
 fabric switches SMLINUX–12
 host adapter SMLINUX–12, SMNetWare–17, SMWIN–17
 managed hub SMNetWare–17, SMNetWare–18, SMWIN–17
 filesets SMUNIX–139

- filler panel (on HDD) INSTALL-46
- firmware requirements SMWIN-18
- firmware, download SMLINUX-45
- firmware, downloading SMWIN-72
- firmware
 - AIX
 - requirements SMUNIX-13
 - upgrading SMUNIX-17
 - verifying SMUNIX-20
 - description SMUNIX-1
 - downloading SMNetWare-49
 - HP-UX
 - requirements SMUNIX-41
 - upgrading SMUNIX-47
 - Solaris
 - requirements SMUNIX-55
 - upgrading SMUNIX-62
 - versions SMUNIX-46, SMUNIX-62
- FlashCopy SMNetWare-3, SMUNIX-93
- FlashCopy logical drive, creating SMWIN-79
- FlashCopy
 - AIX
 - creating a FlashCopy logical drive SMUNIX-110
 - reusing a FlashCopy logical drive SMUNIX-113
 - checking status SMUNIX-121
 - command line interface SMUNIX-121
 - enabling SMUNIX-94
 - HP-UX
 - creating a FlashCopy logical drive SMUNIX-115
 - reusing a FlashCopy logical drive SMUNIX-117
 - logical drive SMLINUX-47
 - logical drive
 - creating SMUNIX-100
 - deleting SMUNIX-136
 - disabling SMUNIX-131
 - mapping to a host SMUNIX-123
 - re-creating SMUNIX-133
 - viewing status SMUNIX-126
 - maximum logical drives SMLINUX-14
 - overview SMUNIX-93
 - planning a logical drive SMUNIX-95
 - premium feature key SMLINUX-3
 - recovering a missing logical drive SMUNIX-138
 - repository logical drive
 - calculating expected overhead SMUNIX-98
 - estimating capacity SMUNIX-98
 - estimating repository life SMUNIX-99
 - properties SMUNIX-127
 - re-sizing SMUNIX-134
 - repository full policy SMUNIX-97, SMUNIX-130
 - setting options SMUNIX-95
 - viewing failure settings SMUNIX-95
 - restriction SMLINUX-15
 - script editor SMUNIX-121
 - script scenarios SMUNIX-93
 - Solaris
 - creating a FlashCopy logical drive SMUNIX-119
 - reusing a FlashCopy logical drive SMUNIX-120
 - viewing progress of a modification operation SMUNIX-131
- form factor HBAguide-22

- form, reader comment SMWIN-xxii
- frequently asked questions SMNetWare-xx
- FRU code table HMPD1-278

G

- GBIC
 - removing INSTALL-29
- getting help SMWIN-xxi
- getting information, help, and service SMLINUX-xix, SMNetWare-xix
- global hot spare (GHS) drives HMPD1-357
- global option settings SMLINUX-23
- grounding requirements HBAguide-x

H

- HACMP ES and ESCRM SMUNIX-81
- hard disk drive firmware download SMLINUX-2, SMNetWare-1
- hard disk drive
 - adding larger-capacity INSTALL-49
 - filler panel INSTALL-46
 - installing hot-swap INSTALL-46
 - LEDs HMPD1-69, INSTALL-40
 - overview INSTALL-45
 - replacing all at same time INSTALL-49, INSTALL-50
 - replacing hot-swap INSTALL-48
 - replacing one at a time INSTALL-49, INSTALL-52
 - slim drive INSTALL-46
- hardware Ethernet address (pre-installation task) SMLINUX-18, SMNetWare-23, SMWIN-22
- hardware Ethernet address label INSTALL-59
- hardware installation process SMLINUX-xi, SMNetWare-xi, SMUNIX-xi, SMWIN-xi
- hardware maintenance and problem determination SMLINUX-xi, SMNetWare-xi, SMUNIX-xi, SMWIN-xi
- hardware maintenance, overview HMPD1-3
- hardware problems HBAguide-23
- hardware requirements SMNetWare-16, SMWIN-17
- hardware requirements
 - AIX SMUNIX-13, SMUNIX-139
 - HP-UX SMUNIX-41, SMUNIX-141
 - Solaris SMUNIX-55, SMUNIX-143
- hardware service and support HBAguide-xxiv, HMPD1-xxxvi, INSTALL-xxiv, SMLINUX-xxi, SMWIN-xxii
- HBA installation and user's guide SMLINUX-xi, SMNetWare-xi, SMUNIX-xi, SMWIN-xi
- hdisk attributes SMUNIX-24, SMUNIX-27, SMUNIX-28
- heat output INSTALL-7
- help SMUNIX-xx, SMUNIX-1, SMUNIX-76, SMUNIX-78
- heterogeneous configurations HMPD1-345
- heterogeneous environment SMUNIX-74
- heterogeneous host
 - configure SMLINUX-48
 - define types SMLINUX-48
- heterogeneous hosts
 - configuring SMWIN-74
 - defining types SMNetWare-51, SMWIN-75
 - overview SMNetWare-51

- high-availability cluster services SMUNIX–81
- hints and tips SMNetWare–xx
- host adapter device driver SMNetWare–6
- host adapter device driver
 - installation procedure SMLINUX–39
- host adapter settings
 - adapter port name HBAguide–17
 - adapter serial number HBAguide–17
 - BIOS address HBAguide–16
 - frame size HBAguide–15
 - hard loop ID HBAguide–15
 - host adapter BIOS HBAguide–15
 - interrupt level HBAguide–17
 - loop reset delay HBAguide–15
 - revision HBAguide–16
 - spin up delay HBAguide–15
- host adapter, connecting to RAID controller INSTALL–29
- host adapters SMLINUX–12, SMNetWare–16, SMNetWare–17, SMWIN–17, SMWIN–50
- host agent software
 - starting SMNetWare–56
 - stopping SMNetWare–55
- host bus adapter SMLINUX–35
- host bus adapter installation and user’s guide SMLINUX–xi, SMNetWare–xi, SMUNIX–xi, SMWIN–xi
- host computer SMLINUX–5
- host computer software SMLINUX–8
- host computer, storage-management software
 - installation SMWIN–39
- host computers SMWIN–10
- Host name SMLINUX–23
- host port, defined SMLINUX–48, SMNetWare–51, SMWIN–75
- host software
 - HP-UX SMUNIX–44, SMUNIX–45
 - packages SMUNIX–3
 - Solaris SMUNIX–59, SMUNIX–61
- host table setup SMLINUX–32
- host table
 - pre-installation tasks SMLINUX–18, SMNetWare–23, SMWIN–22
 - setup SMLINUX–32, SMWIN–36
- host type SMUNIX–73
- host-agent (in-band) management method SMUNIX–5
- host-agent management method INSTALL–18, SMNetWare–7
- host-agent management method
 - advantages SMWIN–6
 - described SMWIN–6
- host-agent software
 - automatically stops SMNetWare–55, SMWIN–82
 - stopping and restarting SMWIN–82
- Hot Add utility SMNetWare–6
- Hot Add utility, using SMNetWare–54, SMWIN–80
- how this document is organized SMUNIX–xix, SMWIN–xx
- how to send comments SMLINUX–xxi
- how to send your comments SMUNIX–xxi, SMWIN–xxii
- HP-UX
 - client software SMUNIX–42
 - cluster services, requirements SMUNIX–81

- HP-UX *(continued)*
 - configuration of storage subsystems SMUNIX–46
 - direct-attached configuration SMUNIX–48
 - firmware
 - requirements SMUNIX–41
 - upgrading SMUNIX–47
 - FlashCopy
 - creating a FlashCopy logical drive SMUNIX–115
 - reusing a FlashCopy logical drive SMUNIX–117
 - hardware requirements SMUNIX–41, SMUNIX–141
 - host software
 - installing SMUNIX–44
 - requirements SMUNIX–44
 - identifying
 - controller ID numbers SMUNIX–51
 - device names and bus numbers SMUNIX–52
 - NVSRAM
 - requirements SMUNIX–41
 - upgrading SMUNIX–47
 - operating system requirements SMUNIX–8
 - requirements
 - client software SMUNIX–42
 - cluster services SMUNIX–81
 - firmware SMUNIX–41
 - hardware SMUNIX–41, SMUNIX–141
 - host software SMUNIX–44
 - NVSRAM SMUNIX–41
 - operating system SMUNIX–8
 - software SMUNIX–141
 - system SMUNIX–141
 - SAN-attached configuration SMUNIX–48
 - SMAgent SMUNIX–44
 - SMclient SMUNIX–43
 - SMruntime SMUNIX–43
 - SMutil SMUNIX–45
 - software requirements SMUNIX–141
 - system requirements SMUNIX–141
 - volumes, redistributing in case of failure SMUNIX–53
- hub
 - See managed hub INSTALL–29
- humidity specifications of storage server HMPD1–64, INSTALL–7
- HyperTerminal version SMUNIX–9

I

- IBM address SMWIN–xxii
- IBM FAST Host Adapter device driver
 - QL2x00 SMLINUX–6, SMLINUX–39, SMNetWare–42
- IBM FAST Management Suite Java SMLINUX–38
- IBM
 - address SMUNIX–xxi
 - director of licensing address SMUNIX–151
 - e-mail address SMUNIX–xxi, SMUNIX–77
- IBMSAN driver SMNetWare–6
- identify logical drives SMLINUX–49
- identifying
 - AIX
 - controller ID numbers SMUNIX–29
 - device names and bus numbers SMUNIX–30
 - logical drives by operating system device names SMUNIX–33

- identifying *(continued)*
 - HP-UX
 - controller ID numbers SMUNIX-51
 - device names and bus numbers SMUNIX-52
 - in-band (host-agent) management method SMUNIX-5
 - in-band management method SMNetWare-7, SMWIN-6
 - information from the World Wide Web SMWIN-xxi
 - information record (blank) SMLINUX-17
 - information record, storage subsystem and controller SMWIN-89
 - information record
 - direct-managed storage subsystem SMLINUX-18
 - sample SMLINUX-18
 - initial automatic discovery
 - procedure SMLINUX-41
 - install and verify SM SW on host and workstation SMLINUX-xi, SMNetWare-xi, SMUNIX-xi, SMWIN-xi
 - install network hardware SMLINUX-xi, SMNetWare-xi, SMUNIX-xi, SMWIN-xi
 - install software components SMNetWare-10
 - install storage expansion unit SMLINUX-xi, SMNetWare-xi, SMUNIX-xi, SMWIN-xi
 - install storage server/RAID enclosures in rack SMLINUX-xi, SMNetWare-xi, SMUNIX-xi, SMWIN-xi
 - installation and support OS guides SMLINUX-xi, SMNetWare-xi, SMUNIX-xi, SMWIN-xi
 - installation guide, storage server SMLINUX-xi, SMNetWare-xi, SMUNIX-xi, SMWIN-xi
 - installation of software components
 - configuration types SMWIN-11
 - host computers SMWIN-10
 - management stations SMWIN-10
 - installation of storage-management software SMWIN-39
 - installation planning SMLINUX-xi, SMNetWare-xi, SMUNIX-xi, SMWIN-xi
 - installation preparation SMWIN-21
 - installation procedure SMLINUX-35
 - installation process SMLINUX-xi, SMNetWare-xi, SMUNIX-xi, SMWIN-xi
 - installation process, cluster server configuration SMWIN-12
 - installation process
 - standard configuration SMNetWare-11
 - installation types
 - hardware environments SMLINUX-9, SMNetWare-12, SMWIN-12
 - new storage subsystem SMWIN-12
 - new storage subsystems SMLINUX-9, SMNetWare-12
 - installation, completing SMWIN-67
 - installation, preparing a network SMWIN-21
 - installing components
 - fan INSTALL-54
 - fiber-optic cable INSTALL-28
 - hard disk drives INSTALL-46
 - power supply INSTALL-57
 - RAID controller INSTALL-60
 - installing software (standard configuration) SMWIN-42, SMWIN-57
 - installing software
 - in a standard configuration SMWIN-39
 - installing software *(continued)*
 - Microsoft Virtual Machine SMWIN-40
 - new installation process SMWIN-39
 - Storage Manager 8.3 Client SMWIN-40
 - verifying Storage Manager 8.3 Client installation SMWIN-41
 - verifying the Event Monitor installation SMWIN-41
 - installing
 - adapter device drivers HBAguide-14
 - AIX
 - client software SMUNIX-15, SMUNIX-16
 - RDAC driver SMUNIX-20
 - client software
 - AIX SMUNIX-15
 - HP-UX SMUNIX-42
 - SMclient SMUNIX-16, SMUNIX-43, SMUNIX-58
 - SMruntime SMUNIX-16, SMUNIX-43, SMUNIX-57
 - Solaris SMUNIX-57
 - cluster server software SMWIN-59
 - FASTT FC2-133 Adapter HBAguide-5
 - hardware in a cluster server environment SMWIN-49
 - host software
 - HP-UX SMUNIX-44
 - SMagent SMUNIX-44, SMUNIX-59
 - SMutil SMUNIX-45, SMUNIX-60
 - Solaris SMUNIX-59
 - HP-UX
 - client software SMUNIX-42, SMUNIX-43
 - host software SMUNIX-44
 - SMutil SMUNIX-45
 - Microsoft Virtual Machine SMWIN-53
 - post-installation tasks SMUNIX-73
 - RDAC SMWIN-43, SMWIN-56
 - sequence of SMUNIX-3
 - software in a cluster server environment SMWIN-49
 - Solaris
 - client software SMUNIX-57, SMUNIX-58
 - host software SMUNIX-59, SMUNIX-60
 - RDAC driver SMUNIX-69
 - Storage Manager 8.3 Agent SMWIN-44, SMWIN-57, SMWIN-59
 - Storage Manager 8.3 Client SMWIN-53
 - Storage Manager 8.3 Utility SMWIN-46
 - Storage Manager in a cluster environment SMWIN-51
 - the DNS/DHCP Management Console SMWIN-33
 - the storage-management software SMWIN-52
 - intended audience for this document SMNetWare-xi
 - interface ports and switches HMPD1-66, INSTALL-5
 - intermittent failures (PD tables) HMPD1-177
 - introduction SMNetWare-i
 - inventory checklist INSTALL-2
 - IP address SMLINUX-32, SMNetWare-8
 - IP address array editor window SMLINUX-24
 - IP address assignments SMLINUX-21
 - IP address objects, create SMLINUX-31
 - IP addresses SMNetWare-23
 - IP addresses for FASTT controllers SMUNIX-8
 - IP addresses, assigning SMWIN-25

IP addresses
pre-installation tasks SMLINUX-18

J

JNI
cards SMUNIX-65, SMUNIX-66
settings SMUNIX-147

L

laser cautions INSTALL-iv
LC-LC fibre channel cable HBAguide-5
LC-SC fibre channel cable HBAguide-5
LEDs
cache battery HMPD1-73, INSTALL-44
fan INSTALL-43
hard disk drive HMPD1-69, INSTALL-40
power supply HMPD1-72, INSTALL-43
RAID controller HMPD1-70, INSTALL-41
storage server HMPD1-69, INSTALL-40
troubleshooting INSTALL-70
lever on power supply, changing location INSTALL-57
limitations, Windows NT and Windows 2000 SMWIN-85
Linux limitations SMLINUX-51
Linux multipath I/O support
FAST Management Suite Java SMLINUX-6,
SMNetWare-6
Linux without TCP/IP SMLINUX-51
Linux
installation process SMLINUX-35
software installation
readme SMLINUX-35
software packages
installing IBM FAST Management Suite Java
SMLINUX-38
installing Storage Manager 8.3 client
SMLINUX-36, SMLINUX-38
installing the IBM Host Adapter device driver
(qla2200.o or qla2300.o) SMLINUX-39
logical drive SMLINUX-4, SMNetWare-4
logical drive support SMLINUX-14
logical drive support
maximum SMLINUX-14
Remote Mirror option SMLINUX-14
logical drive
Create FlashCopy SMLINUX-47
delete SMLINUX-47
logical drives
adding or deleting SMWIN-77
create SMLINUX-46
creating SMNetWare-53, SMWIN-73, SMWIN-77,
SMWIN-78
deleting SMNetWare-53, SMWIN-77, SMWIN-79
identify SMLINUX-49
supported SMWIN-19
loop configurations
overview INSTALL-20
redundant INSTALL-20
loopback data test HMPD1-145, HMPD1-289
lsattr command SMUNIX-33

lsdev command SMUNIX-31
LUN attributes SMUNIX-27
LUNs
and access volumes SMUNIX-7
attributes SMUNIX-24, SMUNIX-27, SMUNIX-28

M

MAC address, Ethernet SMLINUX-19, SMNetWare-24,
SMWIN-23
machine type SMNetWare-12
machine types SMNetWare-4
machine types, supported SMWIN-3
mailing address SMNetWare-xxi
make FC connections SMLINUX-xi, SMNetWare-xi,
SMUNIX-xi, SMWIN-xi
managed hub SMLINUX-12, SMNetWare-16,
SMNetWare-17, SMWIN-17
managed hub
in fibre channel loop configurations INSTALL-20
using to connect host to RAID controller INSTALL-29
managed hubs, installation and service HMPD1-143
management method
direct (out-of-band) SMUNIX-7
host-agent (in-band) SMUNIX-5
management methods SMNetWare-7
management methods
direct (out-of-band) SMLINUX-6, SMNetWare-8
host agent (in-band) SMNetWare-7
host-agent SMWIN-6
in-band SMWIN-6
storage subsystem
direct SMWIN-7
host-agent SMWIN-5
management station SMLINUX-5, SMLINUX-12,
SMNetWare-16, SMNetWare-17, SMNetWare-18,
SMUNIX-1, SMWIN-17
management station
See also storage management station
storage-management software installation
SMWIN-39
management stations SMWIN-10, SMWIN-17
managing coexisting storage subsystems SMWIN-15
maximum logical drives SMLINUX-14
MC Service Guard SMUNIX-145
MC/Service Guard SMUNIX-81
Media Scan without Parity SMNetWare-1
media scan without parity repairs SMLINUX-2
Medium Access Control (MAC) address, Ethernet
SMWIN-23
MEL data HMPD1-367
memory, cache
cache active LED HMPD1-73, INSTALL-43
size of HMPD1-72, INSTALL-43
Microsoft DHCP server
setting up SMLINUX-22, SMLINUX-25
Microsoft Virtual Machine, installing SMWIN-4,
SMWIN-40, SMWIN-53
missing FlashCopy logical drives SMUNIX-138
mode page firmware download SMLINUX-2,
SMNetWare-1

multipath I/O support SMNetWare-6
multipath I/O with PV-links SMUNIX-49

N

name storage subsystem SMLINUX-18
name storage subsystems SMLINUX-44
naming convention SMLINUX-17
naming storage subsystems SMNetWare-23,
SMNetWare-49, SMWIN-23, SMWIN-72
NetWare DHCP server
 creating a subnet object SMWIN-34
 creating IP address objects SMWIN-35
 creating subnet address ranges SMWIN-34
 creating the DHCP server object SMWIN-34
 installing the DNS/DHCP Management Console
 SMWIN-33
 setting up SMWIN-33
 starting the DHCP server SMWIN-35
network (sample) SMLINUX-17
network installation, preparing SMWIN-21
network management station (NMS)
 alert notification SMLINUX-44
new features SMUNIX-2, SMWIN-1
new storage subsystem SMLINUX-9, SMWIN-12
new storage subsystem installation SMNetWare-12
nitices in this document SMNetWare-xix
noise emission values of storage server HMPD1-64,
INSTALL-7
noncluster configuration SMNetWare-11
notes, important HBAguide-26, HMPD1-472,
INSTALL-76, SMLINUX-56, SMNetWare-62,
SMWIN-92
notice, edition SMUNIX-ii
notices SMWIN-xx, SMWIN-91
notices used in this document HBAguide-xxii
notices
 electronic emission HMPD1-472, INSTALL-77
 FCC statement HBAguide-26
 FCC, Class A HMPD1-472, INSTALL-77
 general SMUNIX-151
 safety information INSTALL-iii
 static-sensitive precautions INSTALL-45
 used in this book INSTALL-xxii
 used in this document HMPD1-xxxiv
Novell NetWare
 automatic discovery of hosts and storage
 subsystems SMNetWare-46
 limitations SMNetWare-57
NVSRAM, download SMLINUX-45
NVSRAM, downloading SMNetWare-50, SMWIN-72
NVSRAM
 AIX
 requirements SMUNIX-13, SMUNIX-14
 HP-UX
 requirements SMUNIX-41
 upgrading SMUNIX-47
 Solaris
 requirements SMUNIX-55
 upgrading SMUNIX-62

O

off-line firmware downloads SMNetWare-1
offline events, displaying HMPD1-305
offline firmware downloads SMLINUX-2
online Assistant SMNetWare-xx
online help SMLINUX-xi, SMNetWare-xi, SMUNIX-xi,
SMUNIX-xx, SMUNIX-1, SMUNIX-76, SMUNIX-78,
SMWIN-xi
operating environment HBAguide-21
operating specifications of storage server INSTALL-7
operating system requirements SMLINUX-11
operating system support SMNetWare-57
operating system
 AIX SMUNIX-8, SMUNIX-13, SMUNIX-139
 HP-UX SMUNIX-8, SMUNIX-141
 HP-UX
 requirements SMUNIX-41
 limitations, Windows NT and Windows 2000
 SMWIN-85
 Linux SMLINUX-51
 requirements SMWIN-19
 requirements
 AIX SMUNIX-13
 HP-UX SMUNIX-41
 Solaris SMUNIX-55
 Solaris SMUNIX-8, SMUNIX-143
 Solaris
 requirements SMUNIX-55
 support SMWIN-85
organization of this document SMNetWare-xi,
SMUNIX-xix
out-of-band (direct) management SMLINUX-6
out-of-band (direct) management method SMUNIX-7
out-of-band management method SMNetWare-8
over-temperature condition, shutdown INSTALL-38
overview of heterogeneous hosts SMUNIX-74

P

pager
 alert notification SMLINUX-44
Parity repairs SMLINUX-2, SMNetWare-1
parity scan SMLINUX-51
partitioning SMLINUX-48
partitioning for Solaris devices (default) SMUNIX-63
passive RAID controller HMPD1-285
PCI bus slot
 master HBAguide-6
 subordinate HBAguide-6
PCI or PCI-X
 signaling HBAguide-21
 transfer rate HBAguide-21
PD hints
 common path/single path configurations HMPD1-263
 configuration types HMPD1-279
 drive side hints HMPD1-321
 hubs and switches HMPD1-335
 MEL data format HMPD1-366
 passive RAID controller HMPD1-285
 performing sendEcho tests HMPD1-289

PD hints *(continued)*

- RAID controller errors in the Windows NT event log HMPD1-265
- Read Link Status (RLS) Diagnostics HMPD1-330
- tool hints HMPD1-293
- wrap plug tests HMPD1-341
- Performance Monitor SMLINUX-49
- physical map
 - bridge groups HMPD1-301
 - host groups HMPD1-301
 - storage groups HMPD1-301
 - switch groups HMPD1-301
- planning installation
 - NetWare SMNetWare-21
- power cords, connecting INSTALL-30
- power on sequence, storage server INSTALL-35
- power supply
 - changing lever location INSTALL-57
 - installing INSTALL-57
 - LEDs HMPD1-72, INSTALL-43
 - overview INSTALL-55
 - removing INSTALL-57
 - strain-relief clamp INSTALL-56
- premium feature key SMLINUX-49, SMNetWare-3, SMNetWare-54
- premium feature key
 - FlashCopy SMLINUX-3
 - Remote Mirror option SMLINUX-3
- premium feature
 - FlashCopy SMLINUX-47, SMNetWare-53
 - partitioning SMLINUX-48
 - Remote Mirror Option SMLINUX-49, SMNetWare-54
- premium features SMUNIX-2
- premium features
 - FlashCopy SMUNIX-93
 - Remote Mirror Option SMUNIX-93
 - Storage Partitioning SMUNIX-10
- premium software features SMLINUX-3, SMNetWare-3
- prepare for SM SW installation SMLINUX-xi, SMNetWare-xi, SMUNIX-xi, SMWIN-xi
- prepare network connection SMLINUX-xi, SMNetWare-xi, SMUNIX-xi, SMWIN-xi
- preparing a network installation SMWIN-21
- preparing a network installation
 - network task summary SMNetWare-22
- preparing for installation SMLINUX-17, SMWIN-21
- preparing for installation
 - NetWare SMNetWare-21
- prerequisites
 - AIX
 - client software SMUNIX-15
 - firmware SMUNIX-13
 - hardware SMUNIX-13, SMUNIX-139
 - operating system SMUNIX-8
 - RDAC driver SMUNIX-20, SMUNIX-139
 - software SMUNIX-139
 - system SMUNIX-139
 - cluster services SMUNIX-82
 - HP-UX
 - client software SMUNIX-42
 - cluster services SMUNIX-81

prerequisites *(continued)*

- HP-UX *(continued)*
 - firmware SMUNIX-41
 - hardware SMUNIX-41, SMUNIX-141
 - host software SMUNIX-44
 - NVSRAM SMUNIX-41
 - operating system SMUNIX-8
 - software SMUNIX-141
 - system SMUNIX-141
- Solaris
 - client software SMUNIX-57
 - cluster services SMUNIX-81, SMUNIX-83
 - firmware SMUNIX-55
 - hardware SMUNIX-55, SMUNIX-143
 - host software SMUNIX-59
 - NVSRAM SMUNIX-55
 - operating system SMUNIX-8
 - RDAC driver SMUNIX-59
 - software SMUNIX-143
 - system SMUNIX-143
- problem determination
 - before starting HMPD1-146
 - controller diagnostics HMPD1-315
 - controller units and drive enclosures HMPD1-298
 - determining the configuration HMPD1-293
 - Linux operating systems HMPD1-317
 - maps
 - Boot-up Delay HMPD1-155
 - Check Connections HMPD1-161
 - Cluster Resource HMPD1-154
 - Common Path 1 HMPD1-166
 - Common Path 2 HMPD1-167
 - Configuration Type HMPD1-152
 - Controller Fatal Event Logged 1 HMPD1-179
 - Device 1 HMPD1-168
 - Device 2 HMPD1-169
 - Diagnosing with SANavigator - Intermittent Failures HMPD1-176
 - Diagnosing with SANavigator 2 HMPD1-173
 - Fibre Path 1 HMPD1-162
 - Fibre Path 2 HMPD1-163
 - HBA Fatal Event Logged HMPD1-182
 - Hub/Switch 1 HMPD1-157
 - Hub/Switch 2 HMPD1-159
 - Linux port configuration 1 HMPD1-183
 - Linux port configuration 2 HMPD1-185
 - overview HMPD1-151
 - RAID Controller Passive HMPD1-153
 - Single Path Fail 1 HMPD1-164
 - Single Path Fail 2 HMPD1-165
 - Systems Management HMPD1-156
 - overview HMPD1-143
 - SANavigator discovery HMPD1-300
 - start-up delay HMPD1-296
 - starting points HMPD1-145, HMPD1-147
- products, developed SMUNIX-151
- pSeries HMPD1-3
- PSSP with GPFS SMUNIX-81
- purpose of this document SMNetWare-xi
- PV-links SMUNIX-49

R

- rack mounting instructions for storage server
INSTALL-9
- RAID 5 logical drive SMLINUX-51
- RAID controller enclosure unit installation guide
SMLINUX-xi, SMNetWare-xi, SMUNIX-xi, SMWIN-xi
- RAID controller
 - cache battery HMPD1-73, INSTALL-44
 - connecting Ethernet cable to INSTALL-30
 - connecting host to INSTALL-29
 - connecting RS-232 (serial) cable INSTALL-30
 - LEDs HMPD1-70, INSTALL-41
 - overview INSTALL-59
 - replacing INSTALL-60
- RAID module SMLINUX-4, SMNetWare-4
- RDAC (Redundant Disk Array Controller)
 - assigning static drive letters SMWIN-42, SMWIN-55
 - disk space requirements SMWIN-19
 - installation SMWIN-43, SMWIN-56
 - installing on Windows 2000 SMWIN-42, SMWIN-55
 - overview SMWIN-5
 - verifying installation SMWIN-43, SMWIN-56
- RDAC driver
 - AIX
 - configuring SMUNIX-21
 - installing SMUNIX-20, SMUNIX-21
 - requirements SMUNIX-20, SMUNIX-139
 - attributes SMUNIX-21
 - description SMUNIX-5
 - IDs SMUNIX-82
 - installing SMUNIX-69
 - Solaris
 - installing SMUNIX-69
 - requirements SMUNIX-59
 - uninstalling SMUNIX-61
- RDACFLTR HMPD1-265
- read link status (RLS) diagnostic SMLINUX-3
- reader comment form SMUNIX-xxi
- reader comment form processing SMWIN-xxii
- readers' comment form (RCF) SMNetWare-xxi
- readme.txt file SMUNIX-1
- records, keeping INSTALL-73
- recover configuration SMLINUX-46, SMNetWare-50,
SMUNIX-79, SMWIN-73
- recycling the cache battery INSTALL-66
- Red Hat Linux Advanced Server SMLINUX-xi,
SMLINUX-1
- Red Hat Linux
 - logical drive limits SMLINUX-51
 - software packages
 - installing Storage Manager 7 client SMLINUX-37
- redistributing volumes in case of failure SMUNIX-39,
SMUNIX-53, SMUNIX-72
- redundancy check SMLINUX-51
- Redundant Disk Array Controller (RDAC) SMWIN-5,
SMWIN-42
- redundant host and drive loops INSTALL-20
- Remote Discovery Connection (RDC) HMPD1-314
- Remote Mirror feature, using SMWIN-80
- Remote Mirror option SMLINUX-49, SMNetWare-3
- Remote Mirror Option SMUNIX-93

- Remote Mirror option
 - maximum logical drives SMLINUX-14
 - premium feature key SMLINUX-3
 - restriction SMLINUX-15
- removing components
 - fiber-optic cable INSTALL-29
 - GBIC INSTALL-29
 - power supply INSTALL-57
- renaming storage subsystem SMUNIX-78
- replacing components
 - cache battery INSTALL-65
 - fan INSTALL-54
 - RAID controller INSTALL-60
- requirements, system SMWIN-16
- requirements
 - AIX
 - client software SMUNIX-15
 - firmware SMUNIX-13
 - hardware SMUNIX-13, SMUNIX-139
 - operating system SMUNIX-8
 - RDAC driver SMUNIX-20, SMUNIX-139
 - software SMUNIX-139
 - system SMUNIX-139
 - cluster services SMUNIX-82
 - disk space SMLINUX-13
 - firmware SMLINUX-13, SMWIN-18
 - hardware SMWIN-17
- HP-UX
 - client software SMUNIX-42
 - cluster services SMUNIX-81
 - firmware SMUNIX-41
 - hardware SMUNIX-41, SMUNIX-141
 - host software SMUNIX-44
 - NVSRAM SMUNIX-41
 - operating system SMUNIX-8
 - software SMUNIX-141
 - system SMUNIX-141
- operating system SMLINUX-14
- software SMLINUX-13, SMWIN-18
- Solaris
 - client software SMUNIX-57
 - cluster services SMUNIX-81, SMUNIX-83
 - firmware SMUNIX-55
 - hardware SMUNIX-55, SMUNIX-143
 - host software SMUNIX-59
 - NVSRAM SMUNIX-55
 - operating system SMUNIX-8
 - RDAC driver SMUNIX-59
 - software SMUNIX-143
 - system SMUNIX-143
- resources
 - documents SMUNIX-1
 - e-mail address SMUNIX-xxi, SMUNIX-77
 - files SMUNIX-1
 - online help SMUNIX-xx, SMUNIX-1, SMUNIX-76,
SMUNIX-78
 - Web sites SMUNIX-xx, SMUNIX-1
- restore default settings HBAguide-17
- restoring power
 - after emergency shutdown INSTALL-38
 - after unexpected shutdown INSTALL-37

- restriction
 - FAST600 SMLINUX-4
 - FlashCopy SMLINUX-4
 - Remote Mirror option SMLINUX-4
- restrictions
 - AIX SMUNIX-5, SMUNIX-7, SMUNIX-14
 - FAST600 SMNetWare-3, SMUNIX-3, SMUNIX-8, SMUNIX-19, SMUNIX-20, SMUNIX-41, SMUNIX-64, SMUNIX-65, SMUNIX-81, SMUNIX-83, SMUNIX-84, SMUNIX-93, SMUNIX-141, SMUNIX-145
 - FlashCopy SMNetWare-3
 - in-band management SMUNIX-5
 - Remote Mirror option SMNetWare-3
- retain tips SMNetWare-8
- reviewing a sample network SMWIN-9
- RJ-45 connector SMNetWare-8
- rolling upgrade of storage-management software SMWIN-60
- Router SMLINUX-32
- Router or Gateway SMLINUX-23
- RS-232 (serial) port HMPD1-67, INSTALL-6, INSTALL-30

S

- safety information HBAguide-x
- safety inspection procedure HBAguide-xiii
- safety requirements
 - laser cautions INSTALL-iv
- sample information record SMLINUX-18
- sample network SMLINUX-17
- sample network, reviewing SMWIN-9
- SAN Data Gateway Router
 - LED indicators HMPD1-125
 - service aids HMPD1-125
- SAN environment HMPD1-187
- SAN-attached configuration SMUNIX-19, SMUNIX-48, SMUNIX-64
- SANavigator diagnostic programs SMLINUX-1
- SANavigator
 - associating unassigned HBAs to servers HMPD1-302
 - configuration wizard HMPD1-238
 - configuring only peers to discover HMPD1-315
 - discovering devices HMPD1-246
 - discovery HMPD1-300
 - discovery indicators HMPD1-248
 - discovery troubleshooting HMPD1-259
 - displaying offline events HMPD1-305
 - Event Log behavior HMPD1-306
 - exporting a SAN HMPD1-244
 - exporting your SAN HMPD1-306
 - help HMPD1-236
 - importing a SAN HMPD1-245
 - in-band discovery HMPD1-247
 - initial discovery HMPD1-239
 - installing HMPD1-232
 - LAN configuration and integration HMPD1-245
 - logging into a new SAN HMPD1-242
 - main window HMPD1-240
 - monitoring behavior HMPD1-300

- SANavigator (*continued*)
 - monitoring SAN devices HMPD1-249
 - new features HMPD1-231
 - out-of-band discovery HMPD1-247
 - overview HMPD1-146, HMPD1-231, SMLINUX-39, SMWIN-67
 - physical map HMPD1-300
 - planning a new SAN HMPD1-245
 - polling rate HMPD1-249
 - problem determination examples HMPD1-300
 - remote access HMPD1-243
 - Remote Discovery Connection (RDC HMPD1-314
 - Remote Discovery Connection for in-band management of remote hosts HMPD1-314
 - reports HMPD1-257
 - SAN configuration HMPD1-245
 - SAN database HMPD1-248
 - SNMP configuration HMPD1-246
 - starting HMPD1-237
 - system requirements HMPD1-232
- scheduled upgrade of storage-management software SMWIN-60
- script engine SMLINUX-2
- selectable boot settings HBAguide-17
- send your comments SMNetWare-xxi
- sendEcho tests HMPD1-289, HMPD1-338
- sending your comments to IBM SMUNIX-xxi
- Sense Key values HMPD1-268
- server ID
 - switch setting INSTALL-17
 - switch X1, setting the INSTALL-17
 - switch X10, setting the INSTALL-17
- service and support SMNetWare-xx
- service and support
 - hardware SMWIN-xxii
 - software SMWIN-xxii
- services offered in the U.S.A. SMUNIX-151
- set drive speed, 1 Gb per second SMLINUX-51
- set link speed SMLINUX-xi, SMNetWare-xi, SMUNIX-xi, SMWIN-xi
- set up host or DNS table SMLINUX-32
- setting server ID INSTALL-16
- setting up alert notifications SMWIN-71
- setting up the host or DNS table SMNetWare-37
- setting
 - IP addresses SMUNIX-8
 - NMS for SNMP notification SMUNIX-77
- SFP modules
 - important information about INSTALL-26
 - installing INSTALL-26
 - removing INSTALL-28
 - working with INSTALL-25
- shutdown sequence, storage server INSTALL-36
- Simple Network Management Protocol (SNMP) traps SMLINUX-17, SMNetWare-21, SMWIN-9
- single path configurations HMPD1-263
- slim drive INSTALL-46
- SM concepts guide SMLINUX-xi, SMNetWare-xi, SMUNIX-xi, SMWIN-xi
- SM installation and support guide for Linux SMLINUX-xi, SMNetWare-xi, SMUNIX-xi, SMWIN-xi

- SM installation and support guide for Novell NetWare
 - SMLINUX–xi, SMNetWare–xi, SMUNIX–xi, SMWIN–xi
- SM installation and support guide for Windows 2000
 - SMLINUX–xi, SMNetWare–xi, SMUNIX–xi, SMWIN–xi
- SM installation and support guide for Windows NT
 - SMLINUX–xi, SMNetWare–xi, SMUNIX–xi, SMWIN–xi
- SM8.MIB file SMLINUX–44
- SMagent SMNetWare–5
- SMAgent SMWIN–5
- SMAgent workaround
 - for changing existing Access LUN mapping SMWIN–88
 - for defining additional Access LUN mapping SMWIN–88
- SMagent
 - description SMUNIX–4
 - HP-UX installing SMUNIX–44
 - installing SMUNIX–59
 - Solaris installing SMUNIX–59
- SMclient SMNetWare–5
- SMClient SMWIN–4
- SMclient disk space requirements SMNetWare–19, SMWIN–19
- SMclient
 - AIX installing SMUNIX–16
 - description SMUNIX–4
 - HP-UX installing SMUNIX–43
 - installation procedure SMLINUX–37
 - Solaris installing SMUNIX–58
- SMdevices utility SMNetWare–6
- SMdevices utility, using SMNetWare–55, SMWIN–81
- SMflashcopyassist utility, using SMWIN–81
- SMruntime
 - AIX installing SMUNIX–16
 - HP-UX installing SMUNIX–43
 - installation procedure SMLINUX–36
 - Solaris installing SMUNIX–57
- SMutil SMNetWare–6
- SMUtil SMWIN–5
- SMutil disk space requirements SMNetWare–19, SMWIN–19
- SMutil
 - description SMUNIX–5
 - HP-UX installing SMUNIX–45
 - installation procedure SMLINUX–37
 - Solaris installing SMUNIX–60
- SNMP notification SMUNIX–77
- SNMP traps SMLINUX–17, SMLINUX–44, SMWIN–9
- software checklist INSTALL–2
- software component installation SMLINUX–8
- software components, where to install SMWIN–10
- software components
 - host computer SMNetWare–10
 - management station SMNetWare–10
- software features SMLINUX–1, SMNetWare–1
- software installation SMLINUX–35
- software installation process SMLINUX–xi, SMNetWare–xi, SMUNIX–xi, SMWIN–xi
- software installation
 - Event Monitor SMWIN–41
 - in a standard configuration SMWIN–39
- software installation (*continued*)
 - Microsoft Virtual Machine SMWIN–40
 - new installation process SMWIN–39
 - Storage Manager 8.3 Client SMWIN–40, SMWIN–41
- software package
 - RDAC SMUNIX–5
 - SMagent SMUNIX–4
 - SMclient SMUNIX–4
 - SMutil SMUNIX–5
- software packages
 - components of SMLINUX–5, SMNetWare–5
 - disk space requirements SMLINUX–13
 - FASTT MSJ SMLINUX–6, SMNetWare–6
 - installing Storage Manager 8.2 Utility SMNetWare–41
 - installing Storage Manager 8.3 Client SMNetWare–39
 - installing the host adapter device driver (QL2x00) SMLINUX–39, SMNetWare–42
 - installing the IBMSAN driver SMNetWare–42
 - Storage Manager 8.3 agent SMLINUX–6
 - Storage Manager 8.3 Agent SMNetWare–5
 - Storage Manager 8.3 client SMLINUX–5
 - Storage Manager 8.3 Client SMNetWare–5
 - Storage Manager 8.3 Utility SMLINUX–6
 - Storage Manager 8.3. Utility SMNetWare–6
- software problems HBAguide–23
- software requirements SMNetWare–19, SMWIN–18
- software requirements
 - AIX SMUNIX–139
 - HP-UX SMUNIX–141
 - Solaris SMUNIX–143
- software service and support HBAguide–xxiv, HMPD1–xxxvi, INSTALL–xxiv, SMLINUX–xx, SMWIN–xxii
- software Storage Manager SMWIN–4
- Solaris
 - client software SMUNIX–57, SMUNIX–61
 - cluster services requirements SMUNIX–81, SMUNIX–83
 - configuration of storage subsystem SMUNIX–61
 - devices, default partitioning SMUNIX–63
 - direct-attached configuration SMUNIX–64
 - firmware
 - requirements SMUNIX–55
 - upgrading SMUNIX–62
 - FlashCopy
 - creating a FlashCopy logical drive SMUNIX–119
 - reusing a FlashCopy logical drive SMUNIX–120
 - hardware requirements SMUNIX–55, SMUNIX–143
 - host software SMUNIX–59, SMUNIX–61
 - JNI host bus adapter cards SMUNIX–65, SMUNIX–66
- NVSRAM
 - requirements SMUNIX–55
 - upgrading SMUNIX–62
- operating system requirements SMUNIX–8
- RDAC driver
 - installing SMUNIX–69
 - requirements SMUNIX–59
 - uninstalling SMUNIX–61

Solaris (continued)

- requirements
 - client software SMUNIX-57
 - cluster services SMUNIX-81
 - firmware SMUNIX-55
 - hardware SMUNIX-55, SMUNIX-143
 - host software SMUNIX-59
 - NVSRAM SMUNIX-55
 - operating system SMUNIX-8
 - RDAC driver SMUNIX-59
 - software SMUNIX-143
 - system SMUNIX-143
- SAN-attached configuration SMUNIX-64
- SMagent
 - installing SMUNIX-59
- SMclient
 - installing SMUNIX-58
- SMruntime
 - installing SMUNIX-57
- SMutil
 - installing SMUNIX-60
- software requirements SMUNIX-143
- system requirements SMUNIX-143
- volumes, redistributing in case of failure SMUNIX-72
- specifications for operating storage server INSTALL-7
- specifications, adapter HBAguide-21, HBAguide-22
- standard (noncluster) configuration
 - adding or deleting logical drives SMWIN-77
 - for Windows 2000
 - creating logical drives SMWIN-78
 - deleting logical drives SMWIN-79
 - for Windows NT
 - creating logical drives SMWIN-77
 - deleting logical drives SMWIN-77
- standard configuration SMNetWare-11
- standard feature support
 - 2048 logical drive SMLINUX-2
 - command-line interface (CLI) SMLINUX-2
 - default IP address SMLINUX-3
 - dynamic logical-drive expansion SMLINUX-2
 - EXP700 SMLINUX-2
 - read link status (RLS) diagnostic SMLINUX-3
 - script engine SMLINUX-2
 - storage partitioning SMLINUX-2
- standard software features SMLINUX-1, SMNetWare-1
- start server SMLINUX-xi, SMNetWare-xi, SMUNIX-xi, SMWIN-xi
- start-up delay HMPD1-296
- starting host-agent software SMNetWare-56
- starting Subsystem Management SMLINUX-44, SMWIN-72
- starting the Enterprise Management window SMUNIX-74
- starting the Subsystem Management window SMUNIX-77
- static drive letters, assigning SMWIN-42, SMWIN-55
- static IP address SMNetWare-8
- static-sensitive devices, handling HBAguide-4, INSTALL-3, INSTALL-45
- static-sensitive precautions INSTALL-45
- stopping host-agent software SMNetWare-55
- storage expansion unit installation guide SMLINUX-xi, SMNetWare-xi, SMUNIX-xi, SMWIN-xi
- storage management software
 - administrators privilege SMWIN-18
 - complete installation SMLINUX-40
 - hardware requirements SMLINUX-12
 - hardware requirements
 - BOOTP server SMNetWare-16, SMWIN-17
 - fabric switches SMLINUX-12, SMNetWare-17, SMWIN-17
 - host adapters SMLINUX-12, SMNetWare-17, SMWIN-17
 - managed hub SMLINUX-12, SMNetWare-18, SMWIN-17
 - storage subsystem SMNetWare-17, SMWIN-17
 - UNIX BOOP server SMLINUX-12
 - UNIX BOOTP server SMNetWare-17, SMWIN-17
 - install SMLINUX-35
 - installation procedure SMLINUX-35
 - installation requirements SMNetWare-16, SMWIN-16
 - new terminology SMWIN-3
 - terminology SMLINUX-4
 - uninstalling components SMNetWare-56
- storage management station SMUNIX-1
- Storage Manager 8.3 Agent SMWIN-5
- Storage Manager 8.3 Agent
 - installation SMWIN-44, SMWIN-57, SMWIN-59
 - verifying installation SMWIN-45, SMWIN-57, SMWIN-59
- Storage Manager 8.3 client SMLINUX-5, SMNetWare-5
- Storage Manager 8.3 Client SMWIN-4, SMWIN-40
- Storage Manager 8.3 Client
 - installing SMWIN-53
 - verifying installation SMWIN-54
- Storage Manager 8.3 Utility SMWIN-5
- Storage Manager 8.3 Utility
 - installation SMWIN-46
 - verifying installation SMWIN-46
- Storage Manager software SMWIN-4
- Storage Manager software
 - installation sequence SMUNIX-3
 - introduction SMUNIX-1
 - software packages SMUNIX-3
 - uninstalling, Solaris SMUNIX-61
- Storage Manager
 - controller diagnostics HMPD1-315
- storage partitioning SMLINUX-2
- Storage Partitioning premium feature SMUNIX-10
- storage server installation guide SMLINUX-xi, SMNetWare-xi, SMUNIX-xi, SMWIN-xi
- storage server
 - components
 - back view HMPD1-66, INSTALL-5
 - front view HMPD1-64, INSTALL-4
 - hard disk drives INSTALL-45
 - installing power supply INSTALL-57
 - power supply INSTALL-55
 - replacing RAID controller INSTALL-60
 - emergency shutdown INSTALL-38
 - features INSTALL-1

storage server *(continued)*

- fibre channel connections INSTALL–19
- installation preparation INSTALL–9
- installing in a rack INSTALL–12
- installing SFP modules INSTALL–26
- interface ports and switches HMPD1–66, INSTALL–5
- inventory checklist INSTALL–2
- LEDs HMPD1–69, HMPD1–70, INSTALL–39, INSTALL–40, INSTALL–41, INSTALL–43
- mounting in a rack INSTALL–9
- operating specifications INSTALL–7
- over-temperature shutdown INSTALL–38
- restoring power after emergency shutdown INSTALL–38
- restoring power after over-temperature shutdown INSTALL–38
- restoring power after unexpected shutdown INSTALL–37
- server ID settings INSTALL–16
- turning off INSTALL–36
- turning on INSTALL–35

storage subsystem SMLINUX–4, SMLINUX–12, SMNetWare–4, SMNetWare–17, SMWIN–17

storage subsystem configuration, installing INSTALL–24

storage subsystem management methods SMWIN–5

storage subsystem profile, saving SMLINUX–46, SMNetWare–50, SMUNIX–79, SMWIN–73

storage subsystem

- additional management tasks SMLINUX–49
- cluster services SMUNIX–81
- configuring INSTALL–17
- configuring
 - AIX SMUNIX–16
 - HP-UX SMUNIX–46
 - procedures SMUNIX–74
 - Solaris SMUNIX–61
- information record SMWIN–89
- initial automatic discovery SMLINUX–41
- introduction SMUNIX–1
- locate SMLINUX–49
- logical drives
 - identifying by operating system device names SMUNIX–33
- management methods
 - direct (out-of-band) SMUNIX–7
 - host-agent (in-band) SMUNIX–5
- management tasks SMUNIX–78
- name SMLINUX–18
- password SMLINUX–49
- performing management tasks SMWIN–75
- profile SMLINUX–49
- renaming SMUNIX–78

storage subsystems SMLINUX–12, SMNetWare–16, SMWIN–51

storage subsystems

- add SMLINUX–43
- coexisting SMNetWare–14
- direct-management SMWIN–7
- discovery of host-agent managed SMNetWare–55, SMWIN–82
- management methods SMNetWare–7

storage subsystems *(continued)*

- name SMLINUX–44
- naming SMWIN–23, SMWIN–72
- performing initial automatic discovery SMWIN–68

storage-management software installation SMWIN–39

storage-management software

- installing INSTALL–31, SMWIN–52
- rolling upgrade SMWIN–60
- scheduled upgrade SMWIN–60
- uninstalling components SMWIN–82
- using SMWIN–77
- using to monitor storage server status INSTALL–38

Storage-management software

- installation requirements SMLINUX–11

storage-subsystem management tasks SMNetWare–52

strain-relief clamp on power supply INSTALL–56

subnet address ranges, create SMLINUX–30

Subnet mask SMLINUX–32

subnet object, create SMLINUX–30

subsystem controller information record SMNetWare–59

Subsystem Management SMLINUX–5, SMNetWare–5

Subsystem Management window

- component of SMclient SMWIN–5
- description SMUNIX–4
- figure of SMUNIX–77
- help SMWIN–1
- Help SMLINUX–1, SMNetWare–1
- online help SMUNIX–2
- starting SMUNIX–77

Subsystem Management

- naming storage subsystems SMNetWare–49

support for FASTT EXP700 Storage Expansion Unit SMNetWare–2

support for FASTT600 Fibre Channel Storage Server SMLINUX–1

support for FASTT900 Fibre Channel Storage Server SMLINUX–1

support, operating system SMWIN–85

supported machine types SMLINUX–4, SMWIN–3

supported operating systems

- Red Hat Linux Advanced Server SMLINUX–1
- SuSE Linux Enterprise Server SMLINUX–1
- SuSE Linux Enterprise Server SMLINUX–xi, SMLINUX–1

switch

- in a SAN-attached configuration SMUNIX–19, SMUNIX–48, SMUNIX–64
- zoning SMUNIX–19, SMUNIX–48, SMUNIX–64

switches, installation and service HMPD1–143

SYMarray HMPD1–265

SYMarray event ID 11 HMPD1–265

SYMarray event ID 11s and 18s HMPD1–265

SYMarray event ID 15s HMPD1–265

system configuration problems HBAguide–23

system requirements SMNetWare–16

system requirements

- AIX SMUNIX–139
- firmware SMWIN–18
- hardware SMWIN–17
- HP-UX SMUNIX–141
- software SMWIN–18

system requirements (*continued*)
Solaris SMUNIX–143

T

tasks by documentation title SMLINUX–xii,
SMNetWare–xii, SMUNIX–xii, SMWIN–xii
TCP/IP protocol verification SMNetWare–37, SMWIN–36
TCP/IP protocol, verify SMLINUX–32
technical assistance SMWIN–xxi
temperature specifications of storage server
HMPD1–64, INSTALL–7
terminology SMNetWare–4, SMWIN–3
trademarks HBAguide–25, HMPD1–471, INSTALL–75,
SMLINUX–56, SMNetWare–62, SMUNIX–151,
SMWIN–91
troubleshooting INSTALL–70
troubleshooting
 fibre channel HBAguide–24
 hardware HBAguide–23
 installation problems HBAguide–23
 system configuration HBAguide–23
turning off the storage server INSTALL–36
turning on the storage server INSTALL–35
type 1 configurations HMPD1–279
Type 1742 FAStT700 Fibre Channel Storage Server
 general checkout HMPD1–79
 parts listing HMPD1–88
 symptom-to-FRU index HMPD1–86
Type 1742 FAStT900 Fibre Channel Storage Server
 general checkout HMPD1–91
 parts listing HMPD1–100
 symptom-to-FRU index HMPD1–98
type 2 configurations HMPD1–280
Type 3523 Fibre Channel Hub and GBIC
 additional service information HMPD1–7
 general checkout HMPD1–6
 parts listing HMPD1–11
 port status LEDs HMPD1–6
 Symptom-to-FRU index HMPD1–10
 verifying GBIC and cable signal presence HMPD1–6
Type 3526 Fibre Channel RAID Controller
 additional service information HMPD1–24
 general checkout HMPD1–23
 parts listing HMPD1–35
 symptom-to-FRU index HMPD1–34
Type 3552 FAStT500 RAID Controller
 general checkout HMPD1–49
 parts listing HMPD1–60
 symptom-to-FRU index HMPD1–59
 tested configurations HMPD1–54

U

uninstall
 existing storage subsystem SMLINUX–35
 Storage Manager SMLINUX–35
uninstalling Storage Manager software, Solaris
SMUNIX–61
uninstalling storage-management software components
SMNetWare–56

United States electronic emission Class A notice
HMPD1–472, INSTALL–77
United States FCC Class A notice HMPD1–472,
INSTALL–77
universal Xport device SMLINUX–15, SMNetWare–7,
SMNetWare–20
Universal Xport device SMWIN–6, SMWIN–20
UNIX BOOTP server SMNetWare–16, SMWIN–17
UNIX BOOTP server, setting up SMWIN–35
updates SMNetWare–xx
upgrading from previous version of
 storage-management software
 rolling upgrade SMWIN–62
 scheduled upgrade SMWIN–61
upgrading from Windows NT 4.0 to 2000
 in a cluster configuration SMWIN–64
 in a standard configuration SMWIN–63
upgrading from Windows NT 4.0 to Windows 2000
SMWIN–63
upgrading
 AIX
 NVSRAM SMUNIX–17
 HP-UX
 firmware SMUNIX–47
 NVSRAM SMUNIX–47
 Solaris
 firmware SMUNIX–62
 NVSRAM SMUNIX–62
user tasks
 FAST Storage Manager SMLINUX–xiii,
 SMNetWare–xiii, SMUNIX–xiii, SMWIN–xiii
 FASTT200 Fibre Channel Storage Server
 SMLINUX–xviii, SMNetWare–xviii, SMUNIX–xviii,
 SMWIN–xviii
 FASTt500 Fibre Channel Storage Server
 SMLINUX–xvii, SMNetWare–xvii, SMUNIX–xvii,
 SMWIN–xvii
 FASTt600 Fibre Channel Storage Server
 SMLINUX–xvi, SMNetWare–xvi, SMUNIX–xvi,
 SMWIN–xvi
 FASTt700 Fibre Channel Storage Server
 SMLINUX–xv, SMNetWare–xv, SMUNIX–xv,
 SMWIN–xv
 FASTt900 Fibre Channel Storage Server
 SMLINUX–xiv, SMNetWare–xiv, SMUNIX–xiv,
 SMWIN–xiv
 related documents SMLINUX–xix, SMNetWare–xix,
 SMUNIX–xix, SMWIN–xix
using the documentation SMWIN–xxi
using
 Hot Add utility SMWIN–80
 Remote Mirror feature SMWIN–80
 SMdevices utility SMWIN–81
 SMflashcopyassist utility SMWIN–81
utility software
 package SMUNIX–5

V

variable settings for JNI adapter cards SMUNIX–66
verify fibre-channel connections SMLINUX–1

- verify server operation w/ LEDs SMLINUX-xi,
SMNetWare-xi, SMUNIX-xi, SMWIN-xi
- verifying default host type SMWIN-74
- verifying installation
 - Event Monitor SMWIN-54
 - RDAC SMWIN-43, SMWIN-56
 - Storage Manager 8 Agent SMWIN-45
 - Storage Manager 8.3 Agent SMWIN-57, SMWIN-59
 - Storage Manager 8.3 Client SMWIN-54
 - Storage Manager 8.3 Utility SMWIN-46
- Veritas Cluster Server SMUNIX-81
- Veritas Volume Manager SMUNIX-81, SMUNIX-82
- Vixel Rapport 2000 fibre-channel hub SMLINUX-51
- volume SMLINUX-4, SMNetWare-4
- volumes
 - redistributing in case of failure SMUNIX-39,
SMUNIX-53, SMUNIX-72

W

- Web sites SMNetWare-xx, SMUNIX-xx, SMUNIX-1,
SMUNIX-14, SMUNIX-20, SMUNIX-42, SMUNIX-83
- web sites, related HBAguide-xxiii, HMPD1-xxxv,
INSTALL-xxiii, SMLINUX-xx
- weight specifications of storage server HMPD1-64,
INSTALL-7
- who should read this document SMWIN-xi
- who should
 - read this document SMUNIX-xi
 - use this document SMUNIX-xi
- Windows 2000 DHCP server
 - installing the DHCP Manager SMWIN-30
 - setting up SMWIN-30, SMWIN-31
- Windows 2000, limitations SMWIN-85
- Windows NT DHCP server
 - installing the DHCP Manager SMWIN-26
 - setting up SMWIN-26
- Windows NT Event log
 - ASC/ASCQ values HMPD1-268
 - details HMPD1-265
 - error conditions, common HMPD1-265
 - event ID 18 HMPD1-266
 - FRU codes HMPD1-278
 - Sense Key values HMPD1-268
- Windows NT
 - Disk Administrator utility SMWIN-77, SMWIN-79
 - limitations SMWIN-85
- workaround, direct-management method SMWIN-87
- workaround, SMAgent
 - for changing existing Access LUN mapping
SMWIN-88
 - for defining additional Access LUN mapping
SMWIN-88
- World Wide Web, getting help and information
SMWIN-xxi
- wrap plugs HMPD1-341

Z

- zoning switches SMUNIX-19, SMUNIX-48, SMUNIX-64

Notices

IBM may not offer the products, services, or features discussed in this document in other countries. Consult your local IBM representative for information on the products and services currently available in your area. Any reference to an IBM product, program, or service is not intended to state or imply that only that IBM product, program, or service may be used. Any functionally equivalent product, program, or service that does not infringe any IBM intellectual property right may be used instead. However, it is the user's responsibility to evaluate and verify the operation of any non-IBM product, program, or service.

IBM may have patents or pending patent applications covering subject matter described in this document. The furnishing of this document does not give you any license to these patents. You can send license inquiries, in writing, to:

*IBM Director of Licensing
IBM Corporation
North Castle Drive
Armonk, NY 10504-1785
U.S.A.*

INTERNATIONAL BUSINESS MACHINES CORPORATION PROVIDES THIS PUBLICATION "AS IS" WITHOUT WARRANTY OF ANY KIND, EITHER EXPRESS OR IMPLIED, INCLUDING, BUT NOT LIMITED TO, THE IMPLIED WARRANTIES OF NON-INFRINGEMENT, MERCHANTABILITY OR FITNESS FOR A PARTICULAR PURPOSE. Some jurisdictions do not allow disclaimer of express or implied warranties in certain transactions, therefore, this statement may not apply to you.

This information could include technical inaccuracies or typographical errors. Changes are periodically made to the information herein; these changes will be incorporated in new editions of the publication. IBM may make improvements and/or changes in the product(s) and/or the program(s) described in this publication at any time without notice.

Any references in this publication to non-IBM Web sites are provided for convenience only and do not in any manner serve as an endorsement of those Web sites. The materials at those Web sites are not part of the materials for this IBM product, and use of those Web sites is at your own risk.

IBM may use or distribute any of the information you supply in any way it believes appropriate without incurring any obligation to you.

Trademarks

The following terms are trademarks of International Business Machines Corporation in the United States, other countries, or both:

IBM
AIX

Netfinity
TotalStorage

Microsoft, Windows, and Windows NT are trademarks of Microsoft Corporation in the United States, other countries, or both.

UNIX is a registered trademark of The Open Group in the United States and other countries.

Other company, product, or service names may be the trademarks or service marks of others.

How to send your comments

Your feedback is important to help us provide the highest quality information. If you have any comments about this document, you can submit them in one of the following ways:

- E-mail

Submit your comments electronically to:

starpubs@us.ibm.com

Be sure to include the name and order number of the document and, if applicable, the specific location of the text you are commenting on, such as a page number or table number.

- Mail or fax

Fill out the Readers' Comments form (RCF) at the back of this document and return it by mail or fax (1-800-426-6209) or give it to an IBM representative. If the RCF has been removed, you can address your comments to:

International Business Machines Corporation
RCF Processing Department
Dept. M86/Bldg. 050-3
5600 Cottle Road
San Jose, CA 95193-0001
U.S.A

When you send information to IBM, you grant IBM a nonexclusive right to use or distribute the information in any way it believes appropriate without incurring any obligation to you.

Readers' comments — we would like to hear from you

IBM TotalStorage FAStT600 and Storage Manager
Version 8.3
Library Guide and Common Index

Publication No. GC26-7562-00

Overall, how satisfied are you with the information in this book?

| | Very Satisfied | Satisfied | Neutral | Dissatisfied | Very Dissatisfied |
|----------------------|--------------------------|--------------------------|--------------------------|--------------------------|--------------------------|
| Overall satisfaction | <input type="checkbox"/> | <input type="checkbox"/> | <input type="checkbox"/> | <input type="checkbox"/> | <input type="checkbox"/> |

How satisfied are you that the information in this book is:

| | Very Satisfied | Satisfied | Neutral | Dissatisfied | Very Dissatisfied |
|--------------------------|--------------------------|--------------------------|--------------------------|--------------------------|--------------------------|
| Accurate | <input type="checkbox"/> | <input type="checkbox"/> | <input type="checkbox"/> | <input type="checkbox"/> | <input type="checkbox"/> |
| Complete | <input type="checkbox"/> | <input type="checkbox"/> | <input type="checkbox"/> | <input type="checkbox"/> | <input type="checkbox"/> |
| Easy to find | <input type="checkbox"/> | <input type="checkbox"/> | <input type="checkbox"/> | <input type="checkbox"/> | <input type="checkbox"/> |
| Easy to understand | <input type="checkbox"/> | <input type="checkbox"/> | <input type="checkbox"/> | <input type="checkbox"/> | <input type="checkbox"/> |
| Well organized | <input type="checkbox"/> | <input type="checkbox"/> | <input type="checkbox"/> | <input type="checkbox"/> | <input type="checkbox"/> |
| Applicable to your tasks | <input type="checkbox"/> | <input type="checkbox"/> | <input type="checkbox"/> | <input type="checkbox"/> | <input type="checkbox"/> |

Please tell us how we can improve this book:

Thank you for your responses. May we contact you? Yes No

When you send comments to IBM, you grant IBM a nonexclusive right to use or distribute your comments in any way it believes appropriate without incurring any obligation to you.

Name

Address

Company or Organization

Phone No.



Fold and Tape

Please do not staple

Fold and Tape



NO POSTAGE
NECESSARY
IF MAILED IN THE
UNITED STATES

BUSINESS REPLY MAIL

FIRST-CLASS MAIL PERMIT NO. 40 ARMONK, NEW YORK

POSTAGE WILL BE PAID BY ADDRESSEE

International Business Machines Corporation
RCF Processing Department
Dept. M86/Building 50-3
5600 Cottle Road
San Jose, CA
U.S.A. 95193-0001



Fold and Tape

Please do not staple

Fold and Tape



Printed in U.S.A.

GC26-7562-00

