

Submit Comment	To Views	Expand	Collapse	QMX Help & Support	Printer Friendly
--------------------------------	--------------------------	------------------------	--------------------------	--	----------------------------------



STG - Systems

Server Packaging Instructions: x225 [Subscribe](#)..[Unsubscribe](#)
 (8647), x226 (8648, 8488)
 No. WW-P-01038 Rev. 7 Production
 Date: 05/22/2006
 Owner: Jeffrey Miller
[Online Version is the Master](#)

NOTE: This document is designed to be used online. You are responsible to use only the “Production” version online.

IMPORTANT NOTICE: The Federal Aviation Administration requires certification that packages shipped by air do not contain explosives, hazardous materials, incendiaries or other destructive devices. Therefore, just prior to sealing the carton, you must inspect its contents to confirm that it contains only parts specified on the IBM bill of materials. If the contents meet specifications, then seal the carton with IBM logo tape or another tamper evident indicator specified on the bill of materials. The logo tape or tamper evident seal will indicate that the carton can be certified to meet FAA standards for air shipment. If you discover parts or devices that appear suspicious (whether or not potentially explosive), carefully secure the carton on the line and notify IBM management promptly.

- Information contained in this document is for reference purposes only.
- Process and Part Numbers may vary in each manufacturing location.
- Refer to local site procedures and Bill of Materials for any substitutions.
- No deviation is to be made to the overall assembly without prior written approval from the responsible Packaging Engineer.

Table of Contents

- Section 1 - Applicable Systems, MTM Table
- Section 2 - Unit Packaging
- Section 3 - Manufacturing Palletization
- Section 4 - Distribution
- Section 5 - Material Listing (BOM)

Section 1 - Applicable Systems, MTM Listing

These packaging instructions apply to the following machine types:

Server

8647, 8648, 8488

SECTION 2.0 - UNIT PACKAGING

2.1 Inspect system to make sure there are no scuffs or scratches on unit.

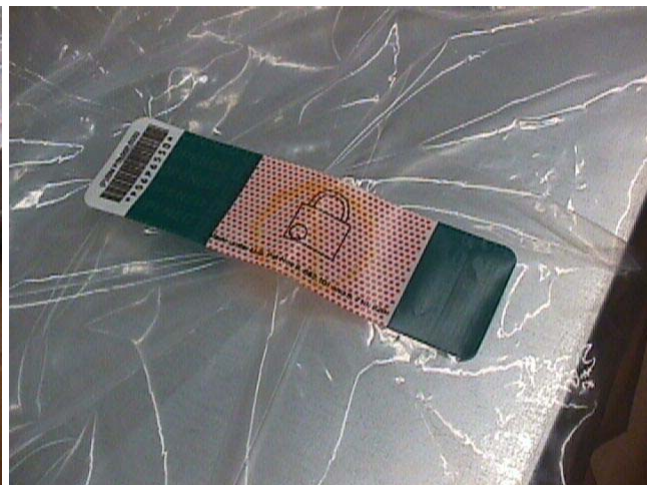
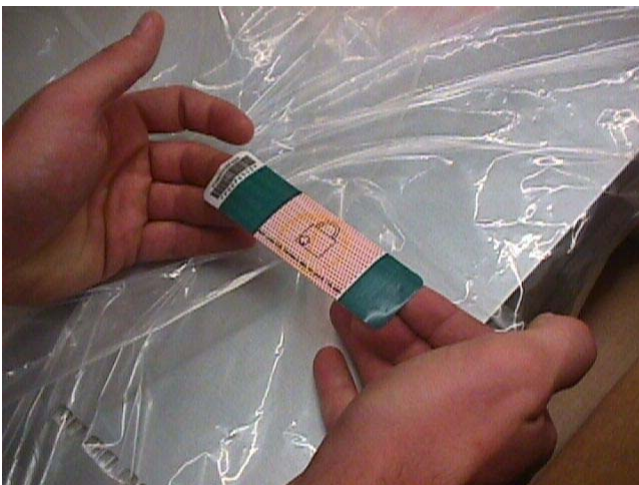
2.2 Make sure voltage setting is correct.

2.3 Set up Carton (32R0092).



2.4 Place system inside bag (6165640).

2.5 Use Tamper Label (06P6550) to seal edges of closed bag. Make sure bag is pulled tight.



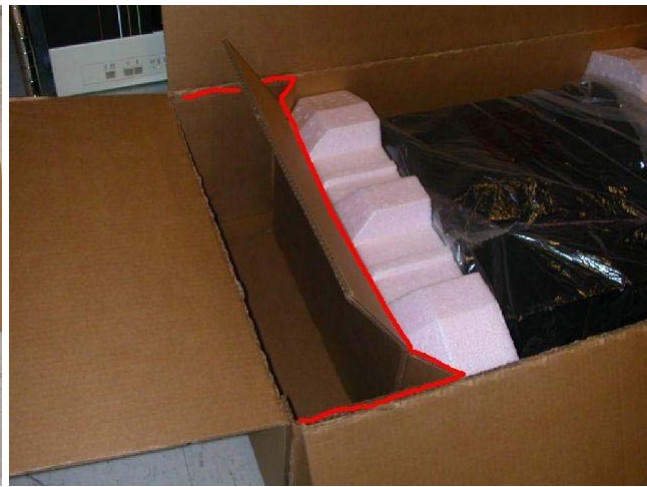
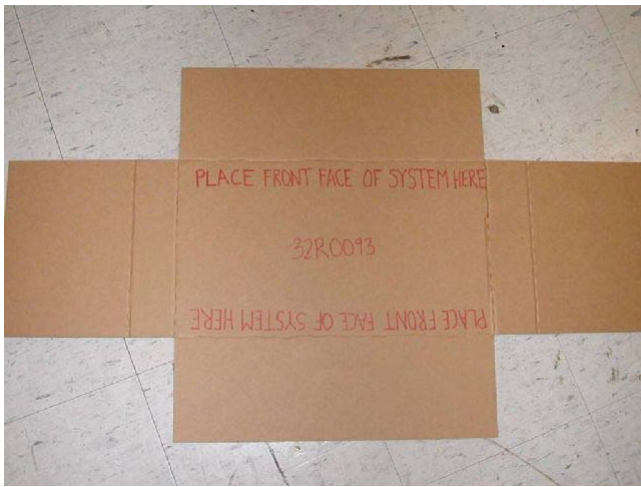
2.6 Place the front cushion (32R0094) on the front of and the rear cushion (32R0095) on the rear of .



2.7 Place system into carton with left side up (latch up), sliding the system all the way back until the rear cushion is in contact with the rear wall of the carton.



2.8 Insert corrugated insert (32R0093) in front of the system. Bend flaps of insert back at 45 degree angle around the front cushion (shown in red).



2.9 Place keyboard and shipgroup contents in void created by corrugated insert in front of the system.

2.10 Take the two (2) printed carton labels (33G9780) off the printer. Position them on front and left sides of the carton. Use label locating marks.

2.11 Close the top of the carton and seal using printed tape (74F5699 - Automatic taper, 74F5698 - for hand held dispensers).

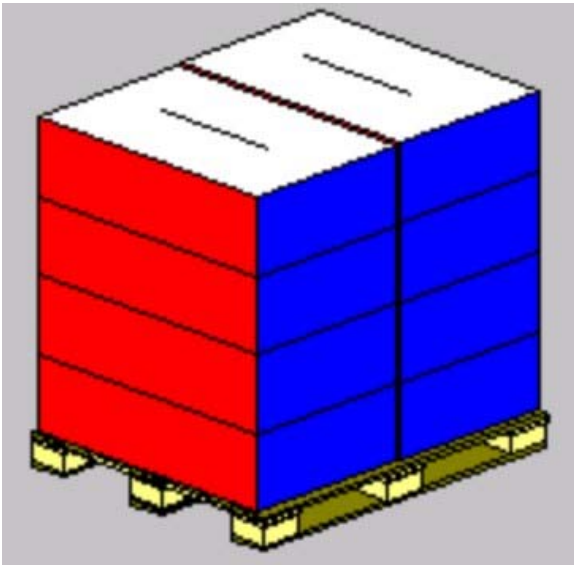


2.12 If required, place Intel label on the top of the carton between label location marks.

Section 3 - Manufacturing Palletization

3.1 - Worldwide Palletization

3.1.1 - Place up to 8 systems on a full size pallet in even quantities.

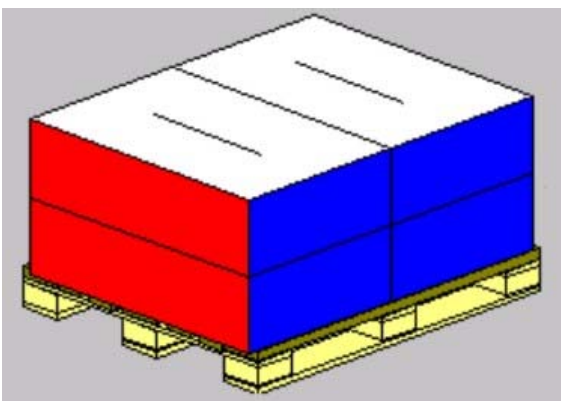


3.1.2 - Secure load to pallet utilizing materials listed on BOM.

3.1.3 - Place two pallet labels (33G6283) on the front and left sides of the pallet load.

3.2 - EMEA Palletization

3.2.1 - Place up to 4 systems on a full size pallet in even quantities.



3.2.2 - Secure load to pallet utilizing materials listed on BOM.

3.2.3 - Place two pallet labels (33G6283) on the front and left sides of the pallet load.

Section 4 - Distribution

Worldwide

Quantity	Half Pallet	Full Pallet	Empty Box w/ label
1-3	X		
4		X	
5		X	1
6		X	
7		X	1
8		X	

EMEA

Quantity	Half Pallet	Full Pallet	Empty Box w/ label
1-2	X		
3		X	1
4		X	

4.2 - Label load for shipment as necessary.

Section 5 - Materials Listing (BOM)

WW Top Pkg BOM - 01R3907

WW Common Parts - 32R0188

PART NUMBER DESCRIPTION QTY

32R0092 Outer Carton 1

32R0094 Molded Cushion 1

32R0095 Molded Cushion 1
32R0093 Shipgroup 1
6165640 Bag, system 1
33G9780 Label Stock, blank 2
06P6550 Tamper label 1
74F5699 Tape - Automatic As required
74F5698 Tape - hand held As required

- ▶ **General Information**
- ▶ **Summary of Changes**
- ▼ **Approval Information**

Date Approved	Approved By
05/22/2006	See Library Control database for approval information.

© 2006 IBM Corporation, All Rights Reserved Worldwide

End of Document