

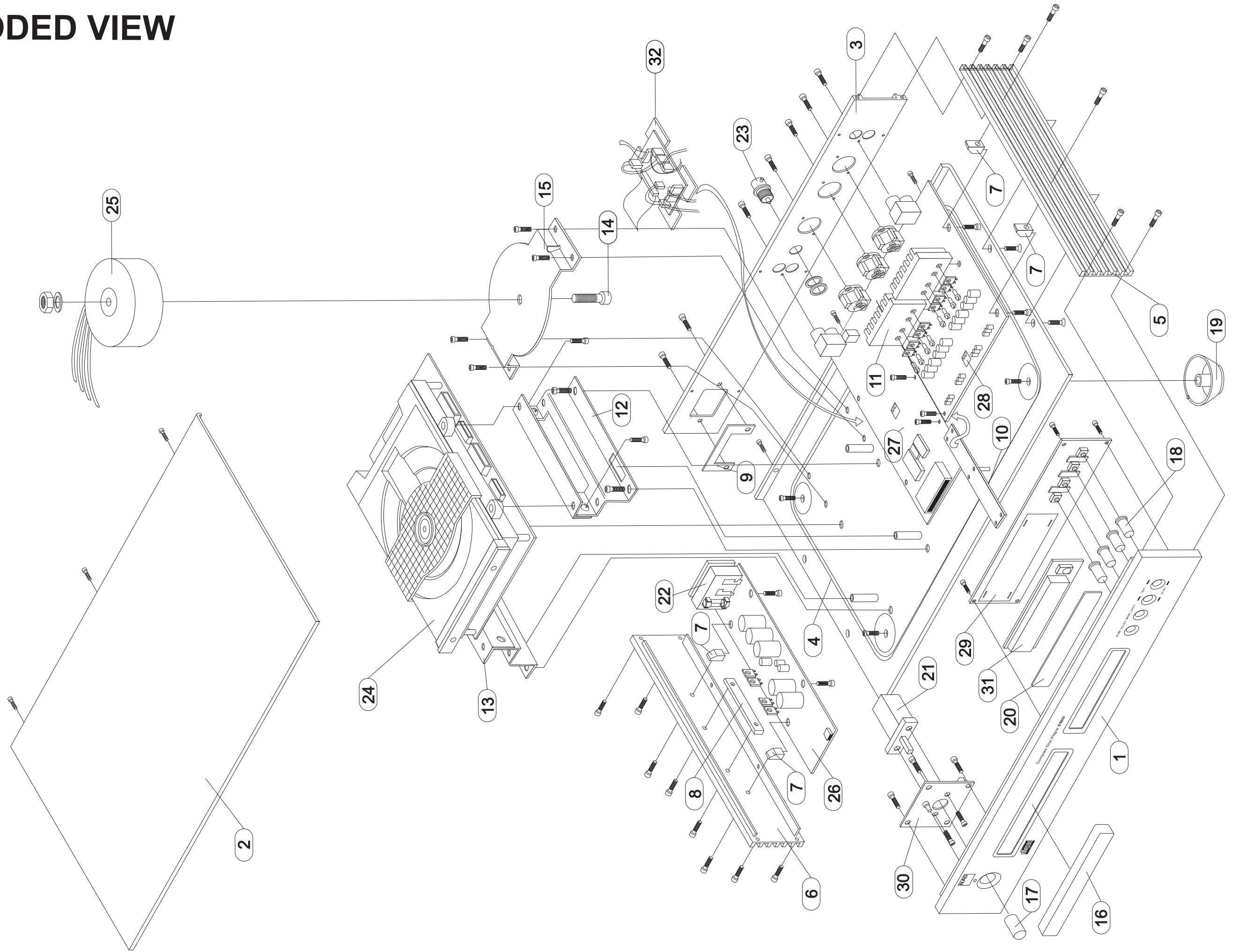
# SERVICE MANUAL




**S 500i**  
**COMPACT**  
**DISC PLAYER**


**S 500i**  
**COMPACT**  
**DISC PLAYER**

# EXPLODED VIEW



## EXPLODED VIEW PARTS LIST\*

| Location | Part Number   | Description   | Quantity |
|----------|---|---|----------|
| 1        | S500i-2001-1  | FRONT FASCIA  | 1        |
| 2        | S500-2004-2   | TOP COVER   | 1        |
| 3        | S500-2005-4   | REAR PANEL 230V   | 1        |
| 4        | S500i-2003-1  | BASE PLATE  | 1        |
| 5        | S500-2002R-3  | RIGHT SIDE PANEL  | 1        |
| 6        | S500-2002L-4  | LEFT SIDE PANEL   | 1        |
| 7        | S500-2026-2   | PCB BAR   | 4        |
| 8        | S500-2036-2   | CLAMP BAR   | 1        |
| 9        | S100-2020-2   | AC INLET PLATE  | 1        |
| 10       | S500-2016-1   | PCB PLATE   | 1        |
| 11       | S500-2009-5   | HEAT SINK 1   | 2        |
| 12       | S500i-2013-2  | RIGHT MECHANISM BRACKET                                     | 1        |
| 13       | S500i-2113-2  | LEFT MECHANISM BRACKET                                      | 1        |
| 14       | NPN   | TRANSFORMER BOLT □  | 1        |
| 15       | S500i-2023-2  | TRAFO BRACKET   | 1        |
| 16       | S500i-2008-2  | CD TRAY LID   | 1        |
| 17       | S100-2011-4   | 10MM POWER BUTTON   | 1        |
| 18       | S100-2121-2   | 6MM INPUT BUTTON  | 4        |
| 19       | S100-2013-3   | FOOT WITH RUBBER CUSHION                                    | 4        |
| 20       | S400-2221-2   | DISPLAY LENS  | 1        |
| 21       | 5200-3181-0-01  | POWER SWITCH  | 1        |
| 22       | AC1   | AC INLET  | 1        |
| 23       | S500-0206   | BNC CONNECTOR   | 1        |
| 24       | VAE1250   | CD MECHANISM WITH LOADER                                    | 1        |
| 25       |  TI-65575A | TRANSFORMER   | 1        |
| 26       | S500-0130   | POWER SUPPLY (PSU PCB)                                      | 1        |
| 27       | S500-0100   | CONTROL PCB   | 1        |
| 28       | S500-0150   | DAC PCB   | 1        |
| 29       | S500-0170   | FRONT PANEL PCB**   | 1        |
| 30       | S500-0205   | POWER SWITCH PCB WITH SWITCH                                | 1        |
| 31       | S400-DISPLAY  | DISPLAY MODULE**  | 1        |
| 32       | MECH-S500i  | MECHANISM INTERFACE BOARD<br>+ 7 SOCKETS & STICKY FOAM/TAPE | 1<br>1   |

Parts marked with the symbol  are critical with regard to the risk of fire and electric shock. Replace only with parts recommended by the manufacturer.

\*\* S500-0171 S500-0170 FRONT PANEL PCB AND S400-DISPLAY DISPLAY MODULE

\* Refer to S500 Service Manual for electrical parts and service procedures.

# SERVICE MANUAL

**S 500i**  
**COMPACT**  
**DISC PLAYER**

© NAD 2003

**NAD ELECTRONICS LTD**  
**LONDON**