

SECTION VII

DIAGRAMS

7-1. INTRODUCTION.

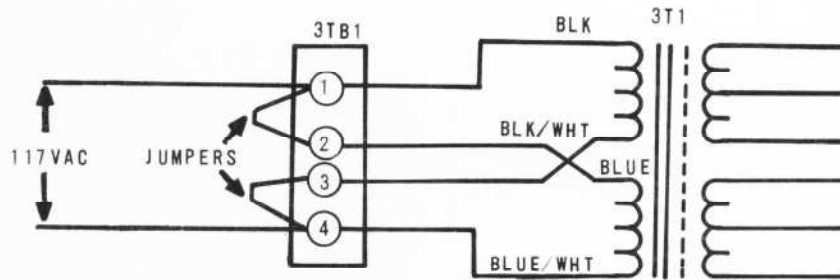
7-2. This section provides block and schematic diagrams and other drawings necessary for maintaining the Stereo 5 Console. The following diagrams are contained in this section:

1.	Stereo 5 Block Diagram	843 0721 001
2.	Stereo 5 Schematic	852 7854 001
3.	Transformer Connection Diagram	816 7787 001

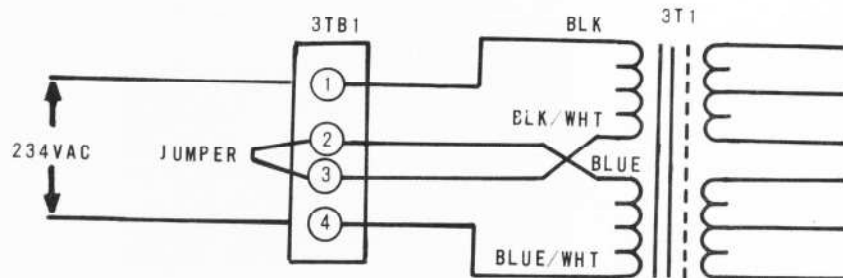
1539

7-1/7-2

WARNING: Disconnect primary power prior to servicing.



PRIMARY CONNECTION FOR 117 VAC (AS SHIPPED)



PRIMARY CONNECTION FOR 234 VAC

HARRIS CORPORATION Broadcast Products Division
123 Hampshire Street, Quincy, Illinois 62301

STEREO 5 CONSOLE, POWER TRANSFORMER
PRIMARY CONNECTIONS
816 7787 001

Warning, disconnect primary power prior to servicing.