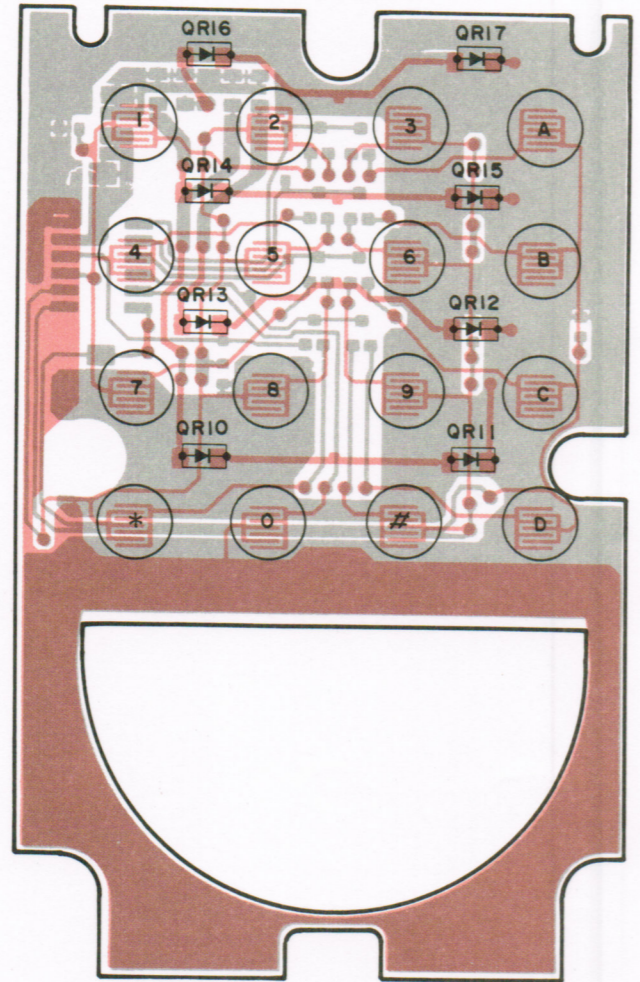


* THE CONTRAST CHART

REF. DESIG.	RR34	RR35	RR36	RR37	RR30	RR31	RR32	RR33
CMP844 (C1208D)	OPEN	OPEN	OPEN	OPEN	0 Ω	0 Ω	0 Ω	0 Ω
CMP844 (C1208DS)	OPEN	OPEN	OPEN	OPEN	0 Ω	0 Ω	0 Ω	0 Ω
CMP844A (C1208DA)	0 Ω	0 Ω	0 Ω	0 Ω	OPEN	OPEN	OPEN	OPEN

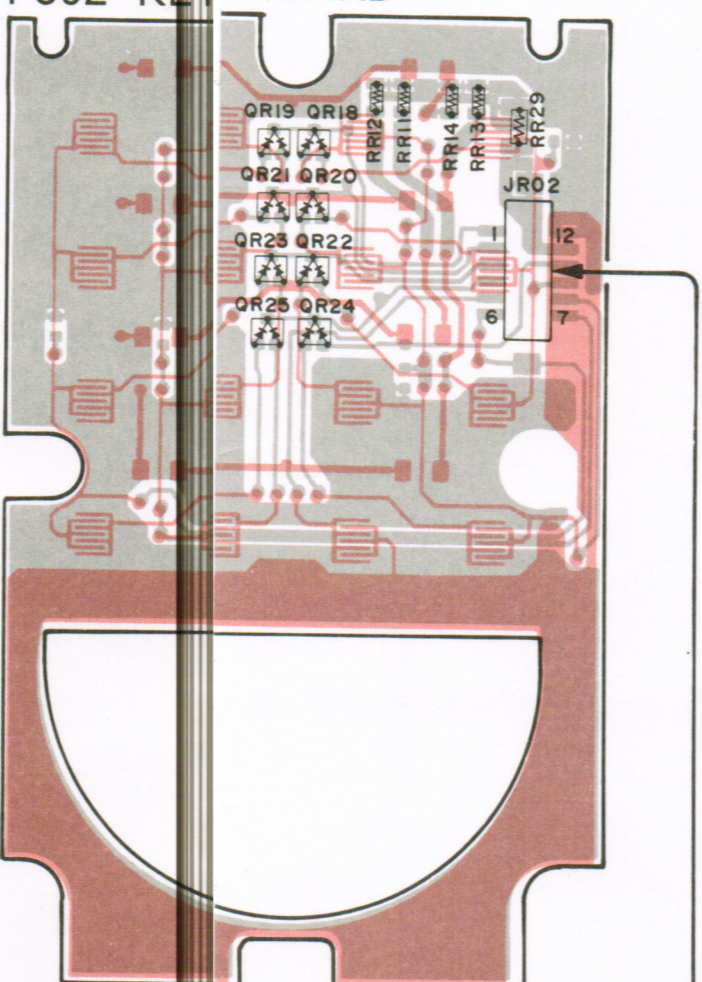
- NOTES:
- REFER TO PARTS LIST FOR COMPONENT VALUES.
 - UNLESS OTHERWISE NOTED RESISTOR VALUES ARE IN OHMS (1/16W), AND CAPACITOR VALUES ARE IN MICROFARADS.
 - VOLTAGE NOTATIONS ARE AS FOLLOWS:
 () NO MARK (NG)---POWER ON ()
 < >-----TX
 DIMM-----DIMMER
- C1208DA 11<0069>
 C1208D 16<0069>
 C1208DS 17<0069>

P802 KEY BOARD



(SHOWN FROM COMPONENT SIDE)

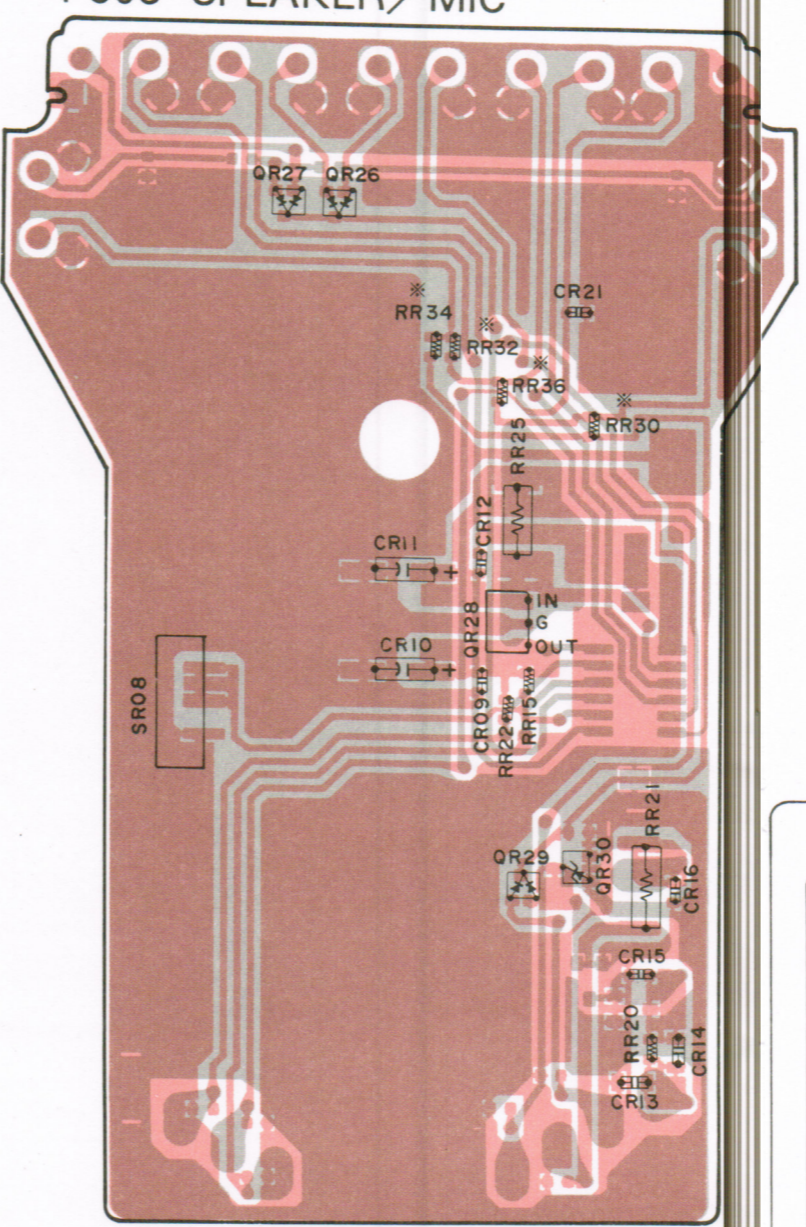
P802 KEY BOARD



(SHOWN FROM SOLDER SIDE)

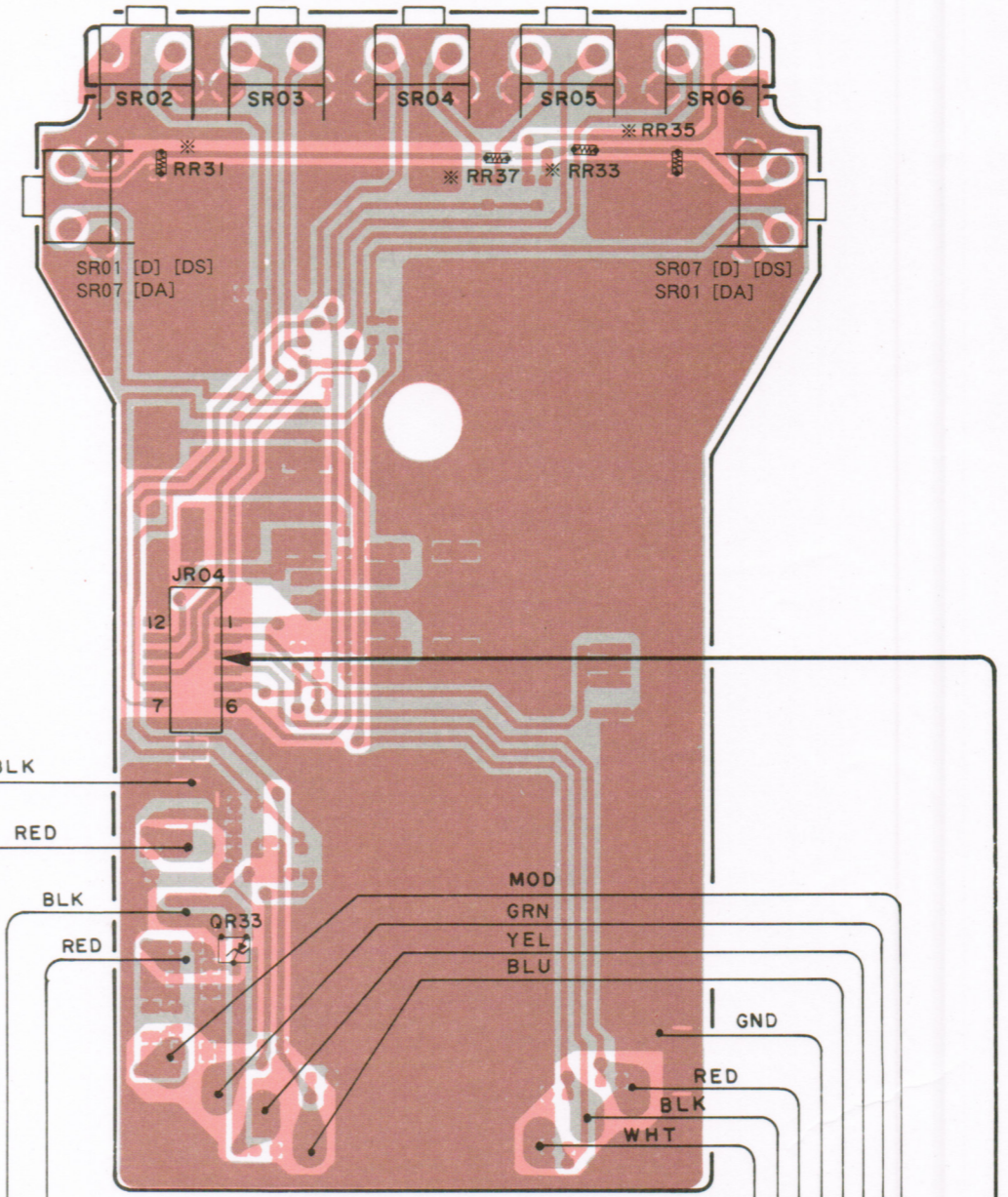
WG183B2010

P803 SPEAKER/MIC



(SHOWN FROM COMPONENT SIDE)

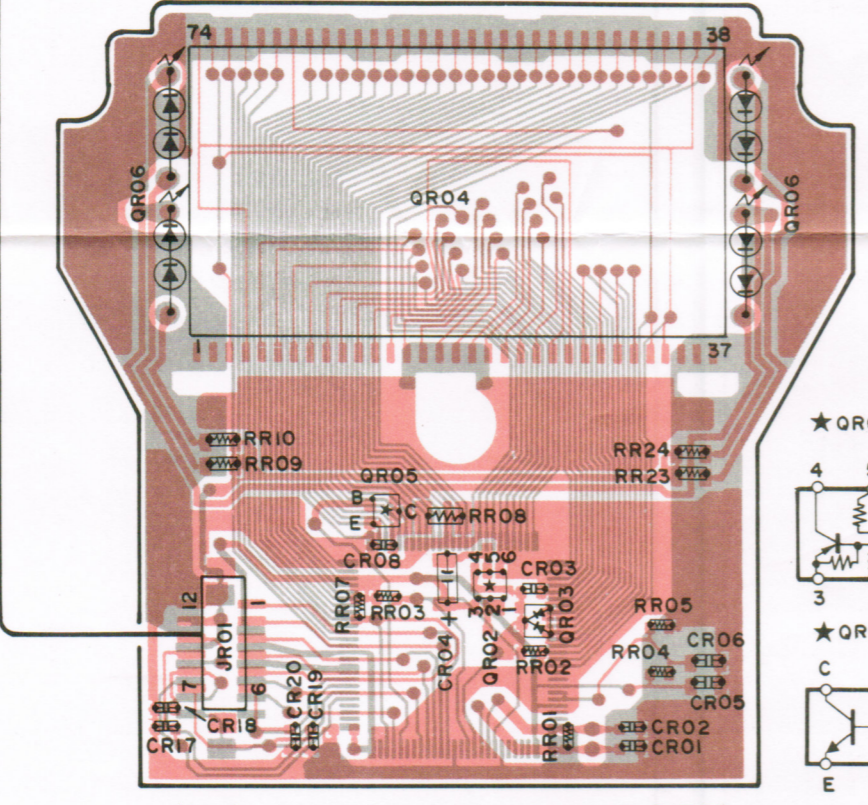
P803 SPEAKER/MIC



(SHOWN FROM SOLDER SIDE)

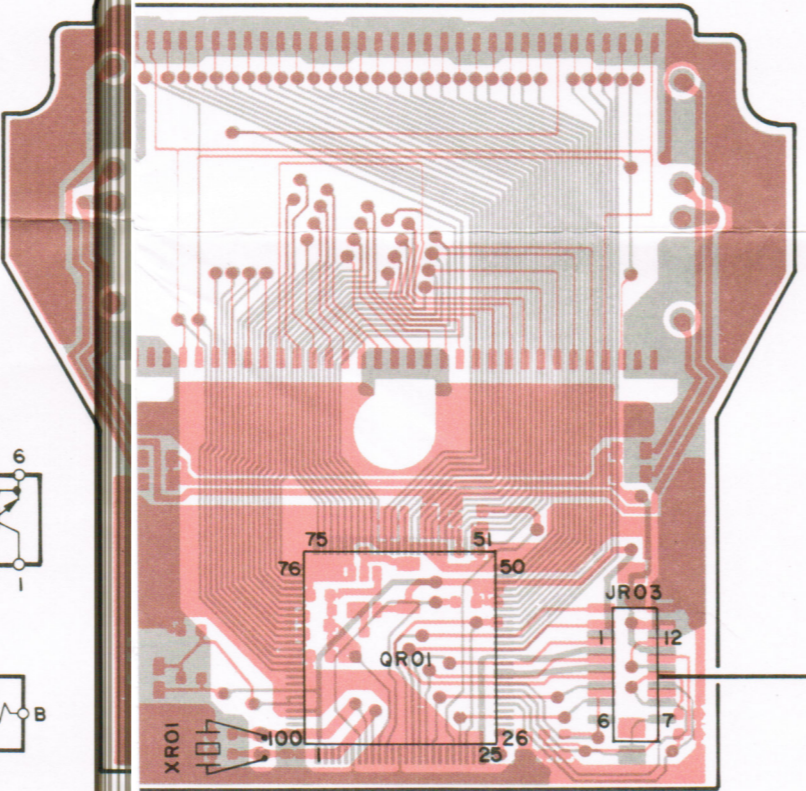
WG183B2030

P801 MIC CONTROL

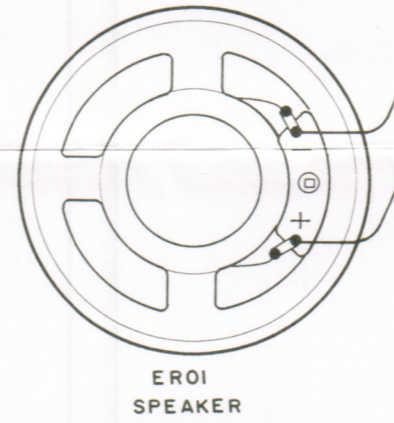
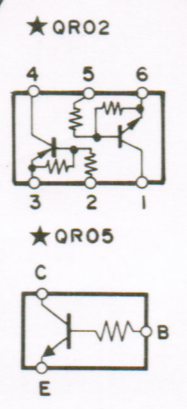


(SHOWN FROM COMPONENT SIDE)

P801 MIC CONTROL



(SHOWN FROM SOLDER SIDE) WG183B2020



ER01 SPEAKER



NR01 MICROPHONE

- [D] --- C1208D
- [DS] --- C1208DS
- [DA] --- C1208DA

REF. DESIG.	RR30, RR31, RR32, RR33	RR34, RR35, RR36, RR37
MODEL		
CMP844	MOUNT	OPEN
CMP844A	OPEN	MOUNT

- (SOLDER SIDE PATTERN)
- (COMPONENT SIDE PATTERN)

WG183B200 P 0

C1208DA 11 < 0069 >
 C1208D 16 < 0069 >
 C1208DS 17 < 0069 >