

**CONTROL ASSEMBLY**

WHITE WIRE FROM BRIDGE PICKUP TO 5 WAY SWITCH

YELLOW WIRE FROM MIDDLE PICKUP TO 5 WAY SWITCH

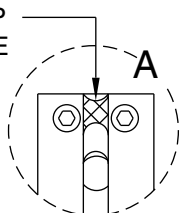
WHITE WIRE FROM NECK PICKUP TO 5 WAY SWITCH

RED WIRE FROM BATTERY SNAP

BATTERY SNAP

SOLDER BLACK WIRE FROM BATTERY SNAP TO TERMINAL #1 OF OUTPUT JACK ASS'Y

ACOUSTIC PICKUP FOR EACH BRIDGE SECTION (6)



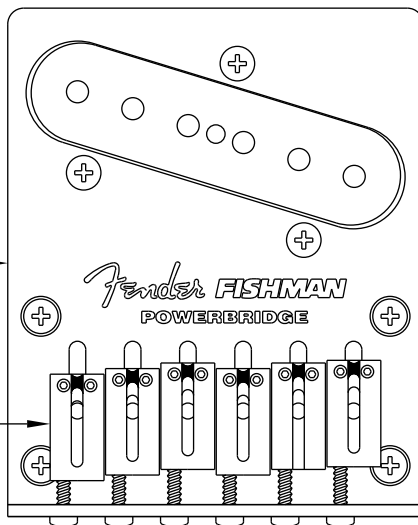
**BRIDGE SECTION**

N.T.S.

SEE DETAIL " A "

23

**BRIDGE ASSEMBLY**



15

19

13

SOLDER BLACK WIRE FROM NECK PICKUP  
RED FROM MIDDLE PICKUP  
BLACK WIRE FROM BRIDGE PICKUP TO BACK OF CONTROL POT

INSTALL SHRINK TUBING OVER ENTIRE LENGTH OF PIEZO CABLE BEFORE SOLDER TO POWERCHIP

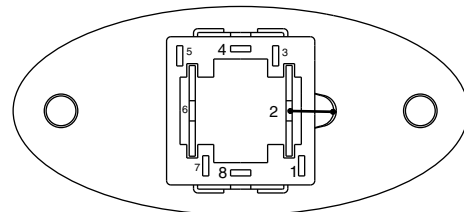
STRIP PIEZO SHIELD TO ALLOW 1/4" OF INSULATOR ON LEAD WIRE AND SOLDER TO GROUND PAD ON POWERCHIP

SOLDER BLACK LEAD WIRE FROM PIEZO CABLE TO PIEZO IN ON POWERCHIP

SOLDER WHITE WIRE FROM POWERCHIP ASS'Y TO TERMINAL #8 OF OUTPUT JACK ASS'Y

SOLDER SHIELD FROM POWERCHIP ASS'Y TO TERMINAL #2 OF OUTPUT JACK ASS'Y L=.300 TO AVOID SHORT

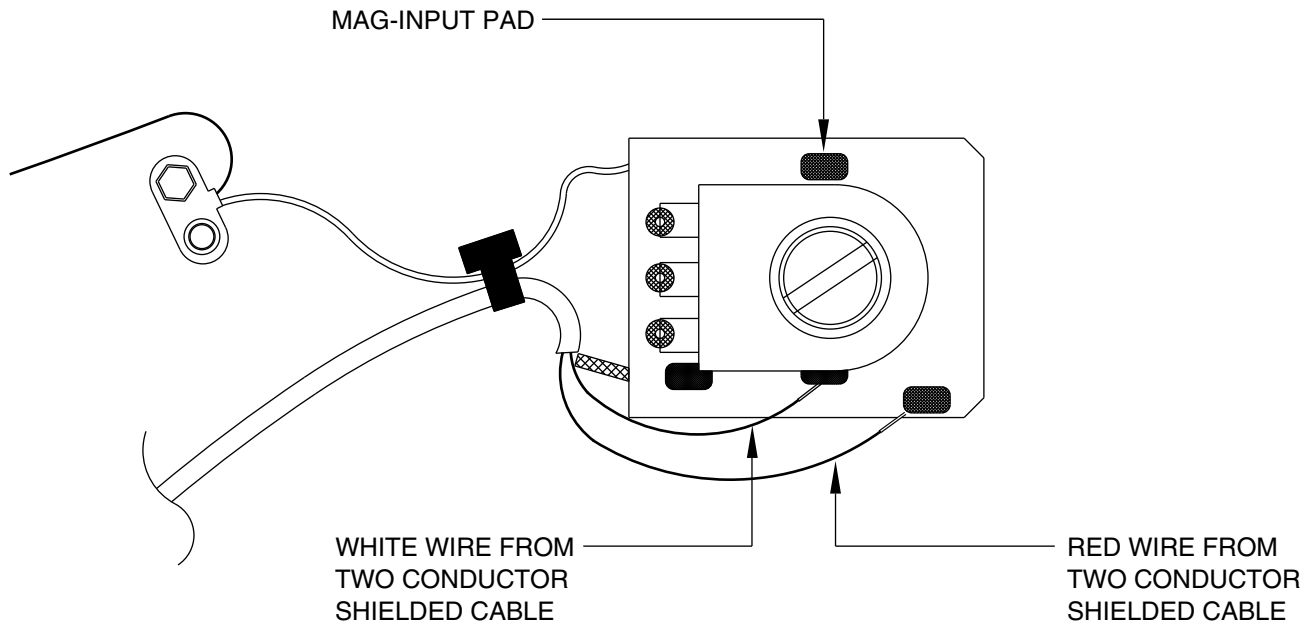
SOLDER RED WIRE FROM POWERCHIP ASS'Y TO TERMINAL #4 OF OUTPUT JACK ASS'Y



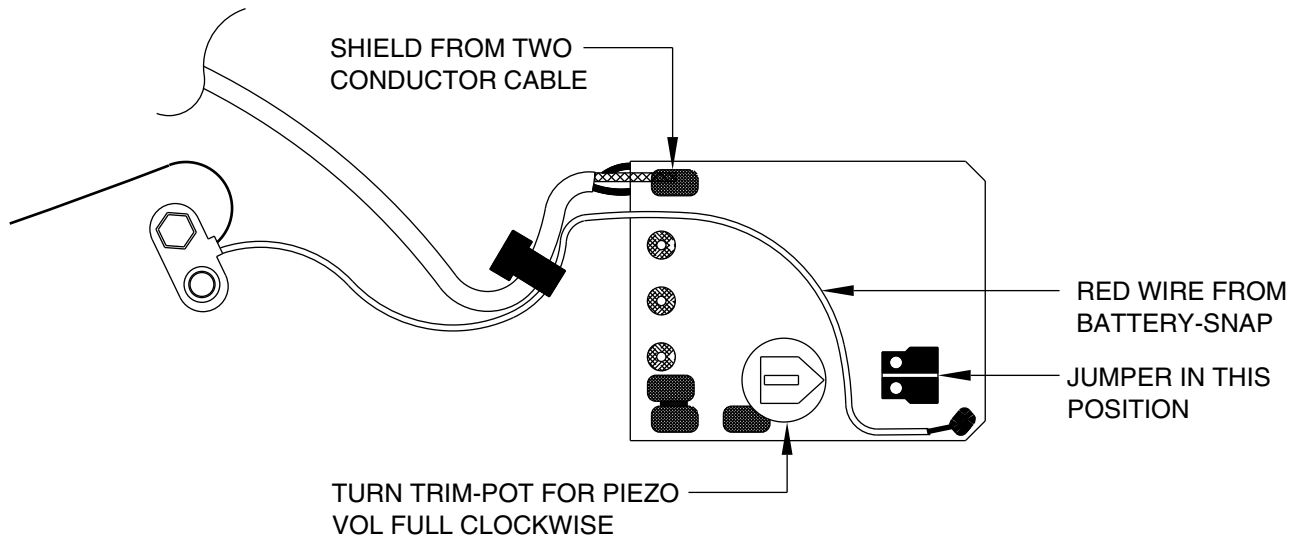
**OUTPUT JACK  
TERMINAL DETAIL**

BOTTOM VIEW : N.T.S.

NASHVILLE POWER TELECASTER 0135000/5002  
FISHMAN PREAMP POWERCHIP (WIRING DETAIL)



TOP VIEW  
SCALE: N.T.S.



BOTTOM VIEW  
SCALE: N.T.S.