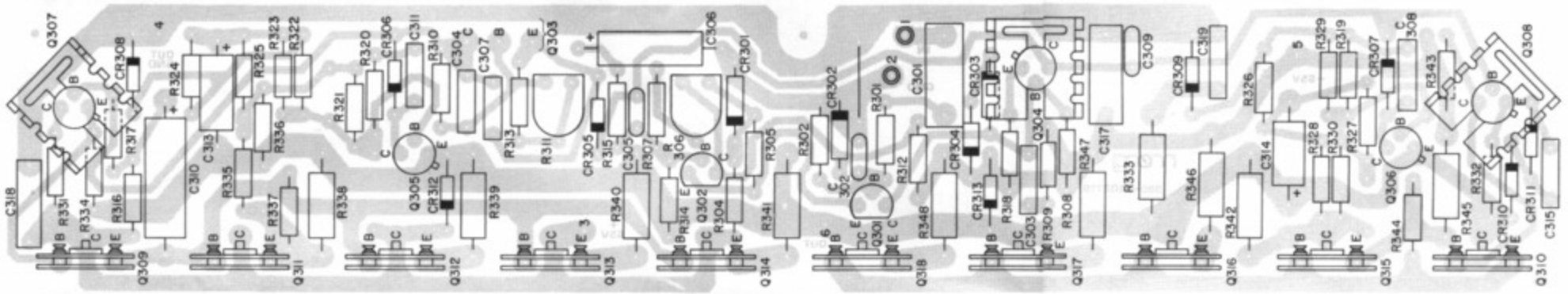
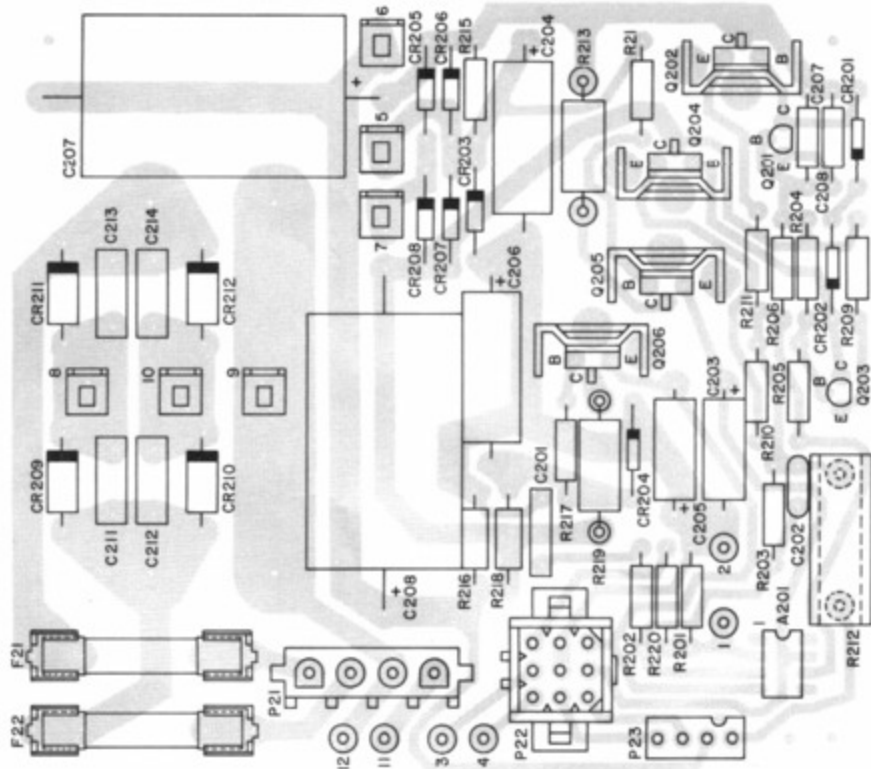


PREAMP AND SIGNAL PROCESSING PRINTED CIRCUIT BOARD ASSEMBLY



POWER AMPLIFIER PRINTED CIRCUIT BOARD ASSEMBLY



POWER SUPPLY AND REVERB DRIVER PRINTED CIRCUIT BOARD ASSEMBLY

L5, L7, L9 AND L11 GUITAR AMPLIFIER ASSEMBLY MODELS 308A, 309A, 312A AND 313A

REF DESIG	PART NUMBER	DESCRIPTION	QTY
CB1	939-041514-001	Circuit Breaker/On-Off Switch, 3.5 Amp, E-T-A Series 45-000P-H (L5, L7, L9)	1
CB1	939-041514-002	Circuit Breaker/On-Off Switch, 6 Amp, E-T-A Series 45-000P-H (L11)	1
CB1	939-041514-003	Circuit Breaker/On-Off Switch, 1.8 Amp, E-T-A Series 45-000P-H (Export Version of L5, L7, L9)	1
CB2	960-041333-003	Circuit Breaker, Thermal, Klaxon, 100 C, NC	1
J5	910-041452-003	Jack, Phone, SPEAKER, Switchcraft L11	1
J6	910-041306-002	Jack, Phone, POWER AMP INPJT, Switchcraft 112A	1
J7, J8	910-041306-006	Jack, Phone, PRE-AMP, REVERB, Switchcraft N-111	2
S1	906-041515-001	Receptacle, Convenience Outlet, 120V	1
S2	906-042146-001	Receptacle, Fan Outlet, 120V (L11)	1
T1	954-041513-001	Transformer, 100 W, Lab Series (L5, L7, L9)	1
T1	954-042148-001	Transformer, 200 W, Lab Series (L11)	1
	806-065532-056	Screw, Oval Head, 10.32 x 3-1/2, Chassis Mounting	4
	902-040591-001	Nut, Speed, Push On, Logo Retainer	2
	910-041452-002	Jack, Phone, Speaker Cabinet Inpjt, Switchcraft 11	2
	914-042258-001	Logo, Lab Series	1
	916-042329-001	Bumper, Rubber, Glide, Lab Series	4
	930-040682-001	Retainer, Handle, Chrome, Lab Series (L5, L7, L9 and L11 Head Cabinet)	2
	930-040682-001	Retainer, Handle, Chrome, Lab Series (L11 Speaker Cabinet)	4
	930-040682-002	Handle, Plastic, Lab Series (L5, L7, L9 and L11 Head Cabinet)	1
	930-040682-002	Handle, Plastic, Lab Series (L11 Speaker Cabinet)	2
	930-042236-001	Socket, Caster	4
	930-042237-001	Caster, 2 Inch, Rubber Wheel, Removeable, Lab Series	4
	935-040694-001	Reverb Assembly, Type 4, Lab Series	1
	935-042180-001	Fan, Rotron 028021, 120 Volt (L11)	1
	957-042346-003	Cable, Speaker Assembly, Double Phone Plugs, 6 Feet (L11)	1
	957-042346-006	Cable, Speaker Assembly, Double Phone Plugs, 12 Feet (L11)	1
	961-040665-001	Strap, Chassis Support, Ornamental (Mounts on Cabinet)	2
	961-040666-001	Corner, 2 Tab, 25°, RH, Satin	1
	961-040666-002	Corner, 2 Tab, 25°, LH, Satin	1
	961-040681-001	Corner, 2 Tab, 90°, Locking, Satin	6
	961-040692-001	Strap, Chassis Support (Fits Underneath Chassis)	2
	961-042328-001	Glide, Metal, Lab Series (Use With 916-042329-001)	4
	978-042014-003	Frame, Grille, Head Cabinet, 29-1/4 x 6-1/4 (L11)	1
	978-042119-002	Frame, Grille, 16-3/16 x 24-1/4 (L5)	1
	978-042120-002	Frame, Grille, 21-3/8 x 24-1/4 (L7)	1
	978-042282-002	Frame, Grille, 18-13/16 x 24-1/4 (L9)	1
	978-042363-116	Frame, Grille, Speaker Cabinet, 29 x 24-1/4 (L11)	1
	985-040696-001	Speaker, 12 Inch, 16 Ohm, 1-1/2 Inch Voice Coil, 100 W 30 Ounce Magnet (L5)	2
	985-040696-001	Speaker, 12 Inch, 16 Ohm, 1-1/2 Inch Voice Coil, 100 W 30 Ounce Magnet (L11 Speaker Cabinet)	4
	985-041446-001	Speaker, 15 Inch, Electrovoice, 5V/M15L (L9)	1
	985-041612-001	Speaker, 10 Inch, 8 Ohm, 1-1/2 Inch Voice Coil, 50 W, 16 Ounce Magnet	4
	994-041574-001	Cable, Speaker Assembly, Phone P/Plug (L5)	1
	994-041611-001	Cable, Speaker Assembly, Phone P/Plug (L7)	1
	994-042288-001	Cable, Speaker Assembly, Phone P/Plug (L9)	1
	996-040803-001	Preamp and Signal Processing Printed Circuit Board Assembly	1
	996-040812-001	Power Amplifier Printed Circuit Board Assembly	1
	996-041773-001	Power Supply and Reverb Amplifier Printed Circuit Board Assembly (L5, L7, L9)	1
	996-041773-002	Power Supply and Reverb Amplifier Printed Circuit Board Assembly (L11)	1
	997-041294-001	Heatsink Subassembly (L5, L7, L9)	1
	997-041305-001	Knob, Lab Series	13
	997-042372-001	Heatsink Subassembly (L11)	1

PREAMP AND SIGNAL PROCESSING PRINTED CIRCUIT BOARD ASSEMBLY

REF DESIG	PART NUMBER	DESCRIPTION	QTY
A101,A103	991-041951-001	Integrated Circuit, Operational Amplifier, LF356N, DIP	2
A102,A113	991-041101-001	Integrated Circuit, Operational Amplifier, 741, DIP	2
A104 thru A109,A112	991-041146-001	Integrated Circuit, Dual Operational Amplifier, 4558, DIP	7
A110	991-041210-001	Integrated Circuit, Operational Amplifier, CA3094E, DIP	1
A111	991-041089-002	Integrated Circuit, Operational Amplifier, CA3080E, DIP	1
CR101,CR102	919-042019-001	Diode, 1N4004	2
J101 thru J104	910-041306-001	Jack, Phone, 1 Circuit, Switchcraft 111	4
L101,L102	939-041850-001	Diode, Light Emitting, Red, OP/COA LSM 6L	2
Q101	991-041064-001	Transistor, FET, 2N4303	1
Q102	991-041052-001	Transistor, PNP, 2N3906	1
Q103	991-041053-001	Transistor, NPN, Darlingtion, D16P1	1
R106,R107	925-041426-004	Potentiometer, 50K Ohms, Log, 30%	2
R108,R112	925-041426-001	Potentiometer, 2.5K Ohms, Log, 30%	2
R117,R167,R175	925-041426-002	Potentiometer, 25K Ohms, Log, 10%	3
R121,R131	925-041426-003	Potentiometer, 25K Ohms, Linear	4
R133,R164	925-041427-001	Potentiometer, Dual 100K Ohms, CCW, Log, 15%	1
R128	925-040275-009	Potentiometer, Trim, 20K Ohms	1
R171,R186	925-040275-009	Potentiometer, Trim, 20K Ohms	2
R185	925-041426-005	Potentiometer, 50K Ohms, CCW, Log, 10%	1
SW101 thru SW103	960-041257-001	Switch, Slide, DPDT	3

POWER SUPPLY AND REVERB DRIVER PRINTED CIRCUIT BOARD ASSEMBLY

REF DESIG	PART NUMBER	DESCRIPTION	QTY
A201	991-041101-001	Integrated Circuit, Operational Amplifier, 741, DIP	1
C207,C208	945-040209-026	Capacitor, Aluminum, Electrolytic, 2200 uf, 35V	2
C209,C210	945-041512-002	Capacitor, 3000 uf, 75V (L5, L7, L9)	2
C209,C210	945-041512-003	Capacitor, 3000 uf, 100V (L11)	2
CR203,CR204	919-041349-001	Diode, Zener, 15V 1N5245	2
CR205 thru CR208	919-042019-001	Diode, 1N4004	4
CR209 thru CR212	919-041157-001	Diode, Rectifier, MR502, Alt GE A158, 3 Amp, 250V (L5, L7, L9)	4
CR209 thru CR212	919-042296-001	Diode, Rectifier, MR752, (L11)	4
Q201	991-041248-001	Transistor, PNP, MPSA93	1
Q202,Q205	991-041049-001	Transistor, NPN, TIP 29	2
Q203	991-041279-001	Transistor, NPN, MPSA06	1
Q204,Q206	991-041050-001	Transistor, PNP, TIP 30	2
R212	924-042255-001	Resistor, 56 Ohms, 10%, 1/2 W	1

MOOG MUSIC INC. BUFFALO, NEW YORK

L5 MODEL 308A
L7 MODEL 309A
L9 MODEL 312A
L11 MODEL 313A

COMPOSITE PARTS LOCATION AND
SELECTED REPLACEMENT PARTS LIST

993-042350-001