

MPU-401AT

MIDI PROCESSING UNIT

SERVICE NOTES

First Edition

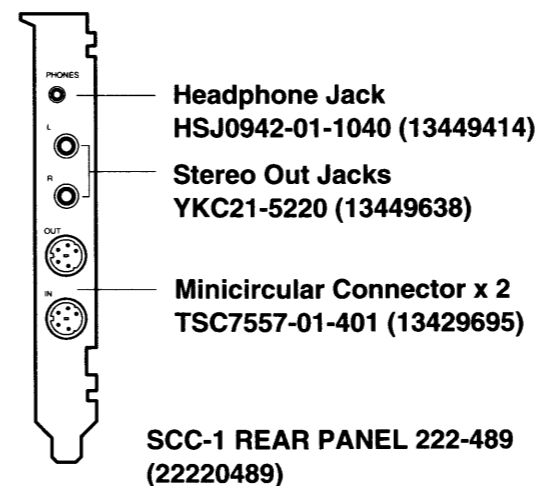
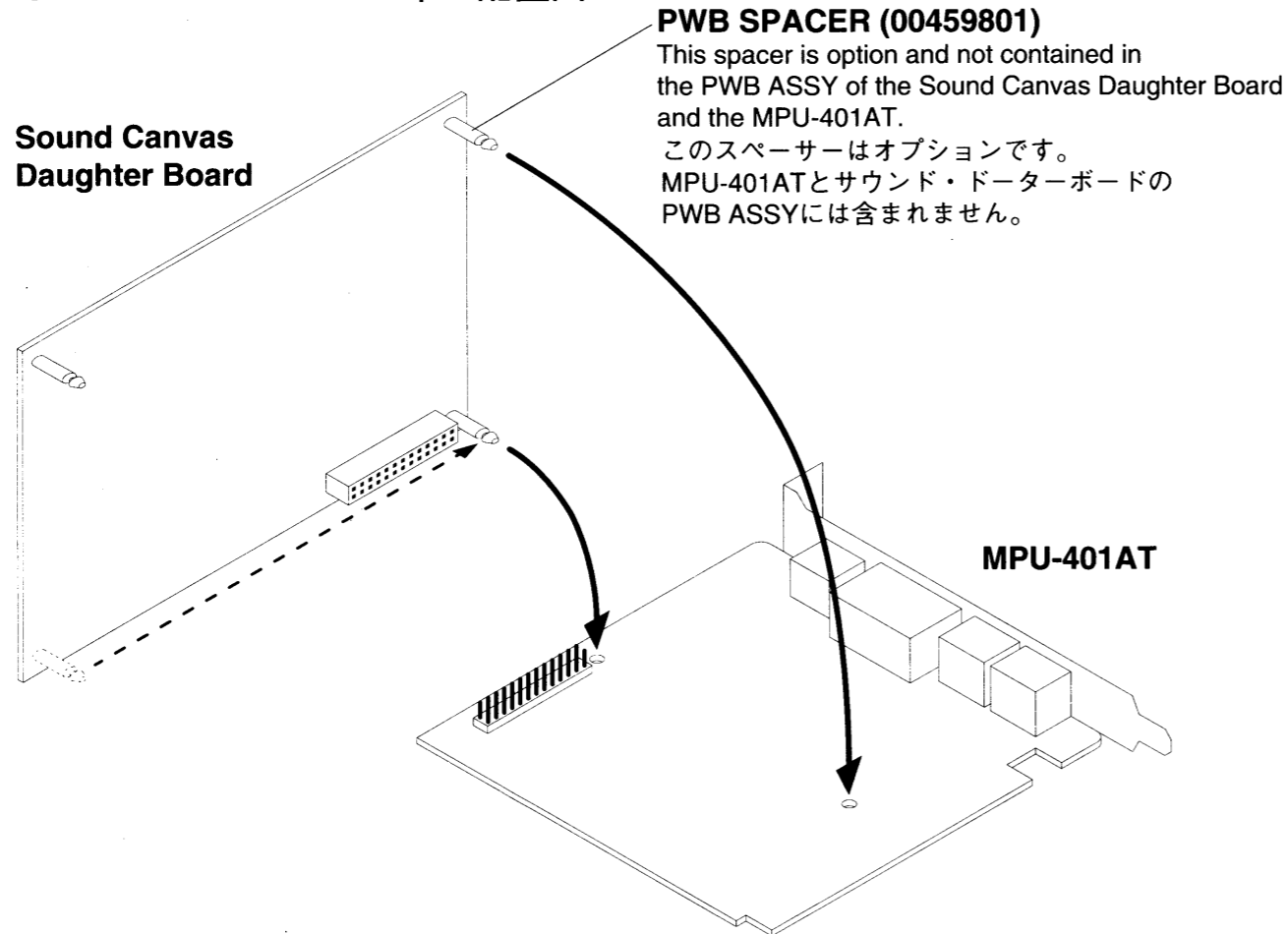
TABLE OF CONTENTS

TABLE OF CONTENTS	目次	Page
SPECIFICATIONS	仕様	1
LOCATION OF CONTROLS	パネル配置図	1
THE SETTING OF THE SWITCHES	スイッチの設定	1
PARTS LIST	パーツリスト	2
CHANGE INFORMATION	変更案内	2
IC DATA	ICデータ	2
BLOCK DIAGRAM	ブロック図	3
MAIN PWB ASSY	MAIN PWB ASSY	3、4

SPECIFICATIONS/仕様

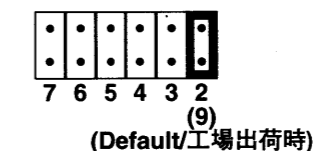
◎Applicable Models	IBM PC/AT or 100% compatibles with half size ISA type card slot
◎MIDI Interface	MPU-401 100% compatible Interrupt Level : 2(9), 3, 4, 5, 6, 7 I/O Port Address : 0300h, 0320h, 0330h, 0332h, 0334h, 0336h
◎Connectors	OUT,IN Minicircular Connectors 5-pin minicircular type x 2 L,R * Stereo Out Jacks RCA phono type x 2 PHONES * Headphone Jack stereo miniature phone type * Sound Canvas Daughter Board Connector * This jack is available when the Sound Canvas Daughter Board is installed in the MPU-401AT.
◎Current Draw	170mA/+5V, 17mA/+12V, 2mA/-12V 320mA/+5V, 35mA/+12V, 13mA/-12V (with GM Daughter Board SCB-7) 380mA/+5V, 35mA/+12V, 13mA/-12V (with GS Daughter Board SCB-55)
◎Dimensions	15/16(W) x 4-11/16(D) x 5(H) inches 23(W) x 119(D) x 126(H) mm (with GS/GM Daughter Board SCB-55/SCB-7) 15/16(W) x 8(D) x 5(H) inches (with GS/GM Daughter Board SCB-55/SCB-7) 23(W) x 203(D) x 126(H) mm
◎Weight	4 oz./88 g 6 oz./153 g (with GS/GM Daughter Board SCB-55/SCB-7)
◎Accessories	Owner's Manual (ENGLISH) (PNo:00673556) Owner's Manual (JAPANESE) (PNo:00675856) 5-pin minicircular - MIDI conversion cable x 2 (PNo:23480291)
◎Options	Sound Canvas DB SCD-10 (GM Daughter Board SCB-7) Sound Canvas DB SCD-15 (GS Daughter Board SCB-55)

LOCATION OF CONTROLS/パネル配置図

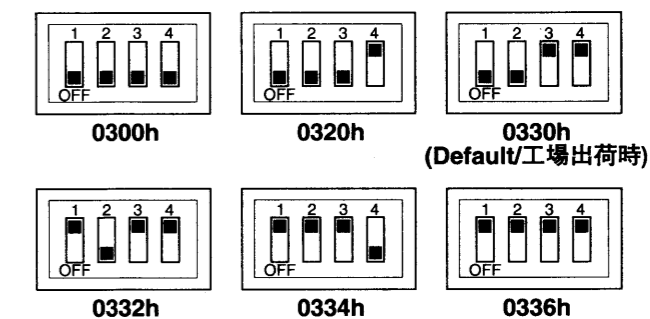


THE SETTING OF THE SWITCHES /スイッチの設定

IRQ/割り込みレベル



I/O address



PARTS LIST/パーツリスト

<p>SAFETY PRECAUTIONS:</p> <p>The parts marked Δ have safety-related characteristics. Use only listed parts for replacement.</p> <p>安全上の注意:</p> <p>Δが付いている部品は、安全上特別な規格でつくられたものです。交換の際は、指定された部品番号以外の部品は使わないようにして下さい。</p>	<p>CONSIDERATIONS ON PARTS ORDERING</p> <p>When ordering any parts listed in the parts list, please specify the following items in the order sheet.</p> <table border="1"> <thead> <tr> <th>QTY</th> <th>PART NUMBER</th> <th>DESCRIPTION</th> <th>MODEL NUMBER</th> </tr> </thead> <tbody> <tr> <td>Ex. 10</td> <td>22575241</td> <td>Sharp Key</td> <td>C-20/50</td> </tr> <tr> <td>15</td> <td>2247017300</td> <td>Knob (orange)</td> <td>DAC-15D</td> </tr> </tbody> </table> <p>Failure to completely fill the above items with correct number and description will result in delayed or even undelivered replacement.</p> <p>パーツ発注に関するお願い</p> <p>オーダーシートには、必ず下記の4項目は正確に記入して下さい。(例外は除く)</p> <table border="1"> <thead> <tr> <th>必要数</th> <th>パーツナンバー</th> <th>品名</th> <th>使用機種</th> </tr> </thead> <tbody> <tr> <td>例) 10</td> <td>22575241</td> <td>Sharp Key</td> <td>C-20/50</td> </tr> <tr> <td>15</td> <td>2247017300</td> <td>Knob (orange)</td> <td>DAC-15D</td> </tr> </tbody> </table> <p>もし記入漏れ、誤記等がある場合、必要部品が発送出来なかつたり、大幅な遅れの原因になります。御協力をお願いします。</p>	QTY	PART NUMBER	DESCRIPTION	MODEL NUMBER	Ex. 10	22575241	Sharp Key	C-20/50	15	2247017300	Knob (orange)	DAC-15D	必要数	パーツナンバー	品名	使用機種	例) 10	22575241	Sharp Key	C-20/50	15	2247017300	Knob (orange)	DAC-15D
QTY	PART NUMBER	DESCRIPTION	MODEL NUMBER																						
Ex. 10	22575241	Sharp Key	C-20/50																						
15	2247017300	Knob (orange)	DAC-15D																						
必要数	パーツナンバー	品名	使用機種																						
例) 10	22575241	Sharp Key	C-20/50																						
15	2247017300	Knob (orange)	DAC-15D																						

NOTE: The parts marked # are new (initial parts).

CASING/ケース			
22220489	SCC-1 REAR PANEL 222-489 PANEL		
SWITCH/スイッチ			
13169702	51D-0401	DIP SWITCH(4p)	SW2
JACK/ジャック			
13429695	TCS7557-01-401	MINI DIN	JK1,JK2
13449638	YKC21-5220	RCA	JK3
13449414	HSJ0942-01-1040	STEREO MINI PHONE	JK5
PCB ASSY/基板完成品			
70560301	MPU-401AT PWB MAIN BOARD #		
IC			
15179222	HD6801VOB55P	MASK CPU	IC5
15239133	HG62E08R10FS	GATE ARRAY	IC6
00126534	HY6264ALJ-10	64K SRAM	IC1
or 00128890	HY6264ALJ-70	64K SRAM	IC1
15289125	PC-410T	PHOTO CUPLR	IC2
00675389	NJM2060M	QUAD OP AMP	IC3 #
15269216	HD74LS04FP	INVERTER	IC4
15259845T0	TC74HC688AF	COMPARATOR	IC7
15199937	M51953BFP	RESET IC	IC8
15289409	M5237ML	REGULATOR	IC9
TRANSISTOR/トランジスター			
15309113	2SA12130	Q1,Q2	
15309104	2SA1586GR	Q6	
15319115	2SC4213A	Q3,Q4,Q5,Q9	
15319107	2SC4116GR	Q7,Q8	
DIODE/ダイオード			
15339119T0	1SS352	SWITCHING DIODE	D1
RESISTOR/抵抗			
15399686	RPC50T 101-J	FILM RESISTOR	R35,R36,R38,R42
15399965	RCE9A103JAG7A	R-ARRAY 10K Ω x8	RA1
CAPACITOR/コンデンサー			
15369109	ECEV0JA101SP	6.3V/100uF	C4,C29,C30,C31
15369152	ECEV1CA100R	16V/10uF	C17,C18,C22,C23
15369149M0	ECEV1CA470P	16V/47uF	C11,C14,C25,C26,C36
15369261	ECEV1HAR47R	50V/0.47uF	C35
15369262	ECEV1HA010R	50V/1uF	C7
13639151S0	16MV220HW	16V/220uF	C10,C13
INDUCTOR, COIL, FILTER/インダクター、コイル、フィルター			
12449426	CEA EMI FILTER	BLM32A06PT	EMI FILTER FL1,FL2,FL3,FL4,FL5,FL6,FL7
12449425M0	CEA EMI FILTER	NKF41R10C223T1	EMI FILTER L1,L2,L3,L4,L5,L6,L7,L8
CRYSTAL/クリスタル			
15299159	CST-4.00MGW	4.00MHz	X1
CONNECTOR/コネクタ			
13429837	IMSA-9210B-2-12-GF	PIN HEADER(10p)	SW1
13429838	IMSA-9215H-GF	SHORT CONNECTOR(2p)	SW6
00674390	PS-26PF-D4T1-PKL1	13x2p CONNECTOR	CN1 #
SCREW/ネジ類			
40017934	3x6mm W Sems FeCm		

MISCELLANEOUS/その他

00673578 MPU-401AT PACKING CASE #

ACCESSORIES/付属品

23480291	SCC-1 MIDI CONVERSION CABLE 0.5Mx2
00673556	MPU-401AT MANUAL (ENGLISH) #
00675856	MPU-401AT MANUAL (JAPANESE) #

CHANGE INFORMATION/変更案内

Change SRAM

Effective: S/N ZG90100~ZG90499 P/N 00126534 (HY6264ALJ-10)
S/N ZG90500-up P/N 00128890 (HY6264ALJ-70)

Replace 64k SRAM P/N 00126534 (HY6264ALJ-10) with 00128890 (HY6264ALJ-70)

Compatibility: These parts have a compatibility each other.

SRAM変更

実施製番: S/N ZG90100~ZG90499 P/N 00126534 (HY6264ALJ-10)
S/N ZG90500以降 P/N 00128890 (HY6264ALJ-70)

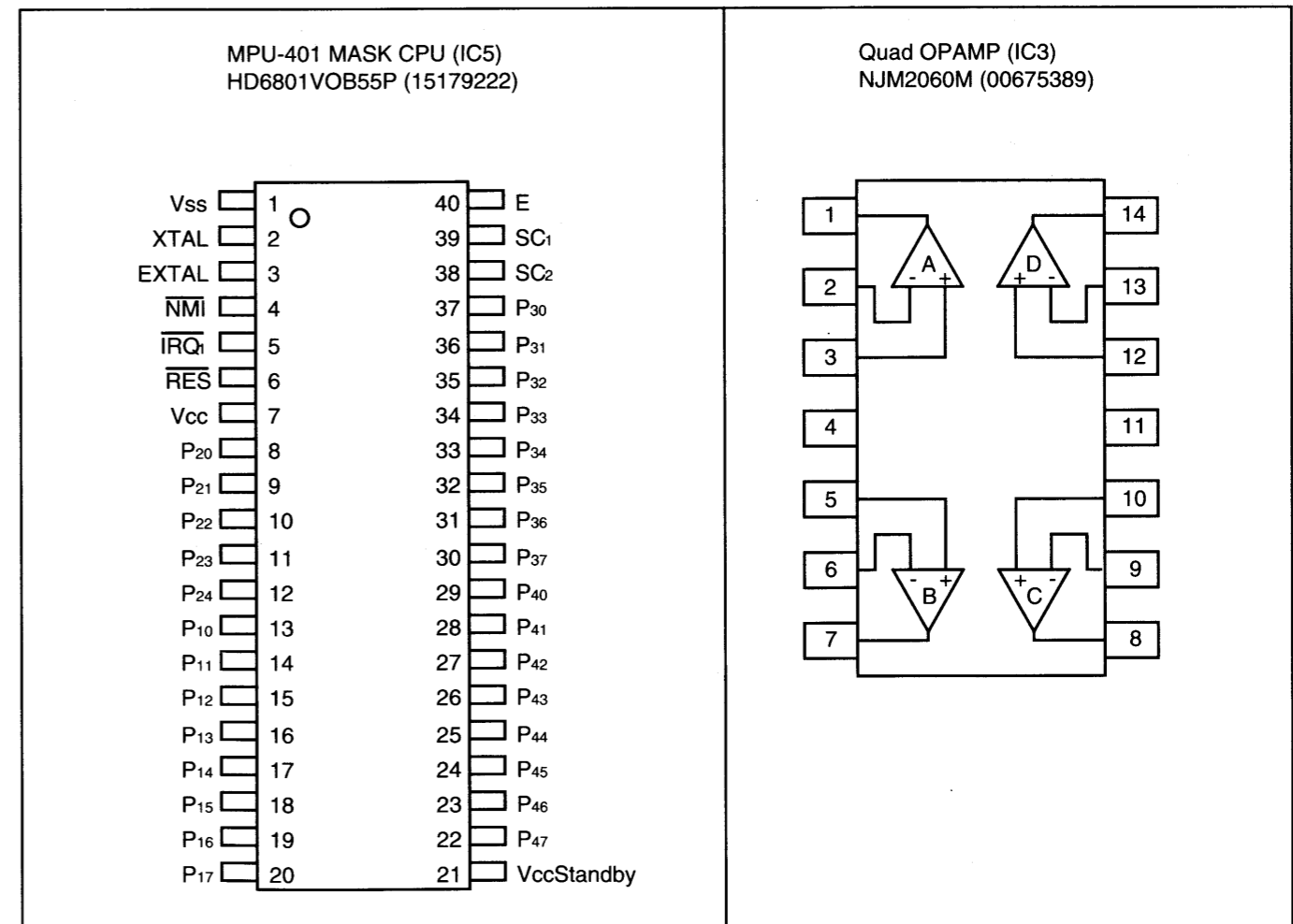
64kSRAMをPNo.00126534(HY6264ALJ-10)からPNo.00128890 (HY6264ALJ-70)に変更。

新旧パーツの互換性: 有り

EFFECTIVE/実施製番

	Part No 部品番号	Description 規格名称	Effective 実施製番
Old/旧	00126534	HY6264ALJ-10	ZG90100-ZG90499
New/新	00128890	HY6264ALJ-70	ZG90500-

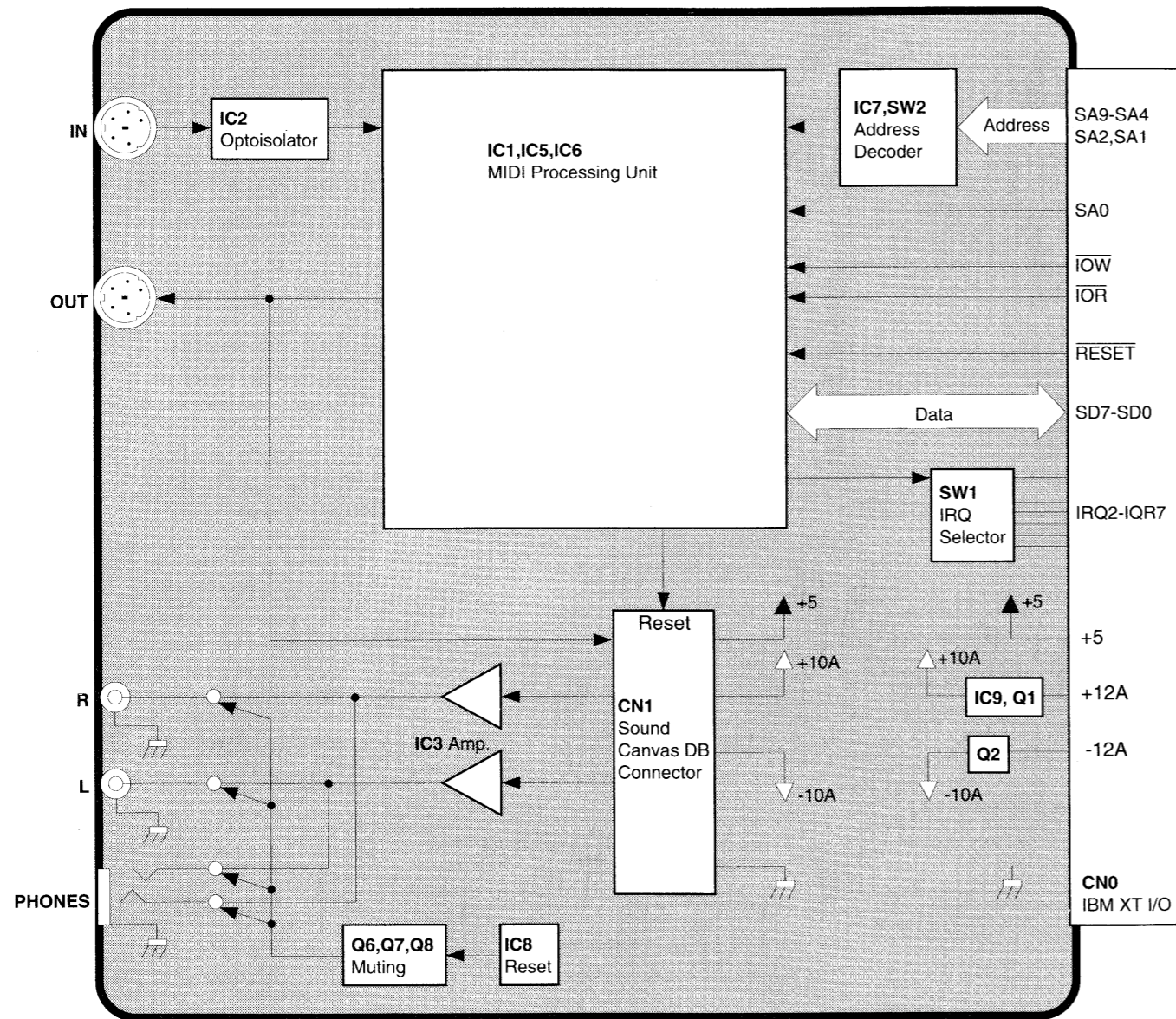
IC DATA/ICデータ



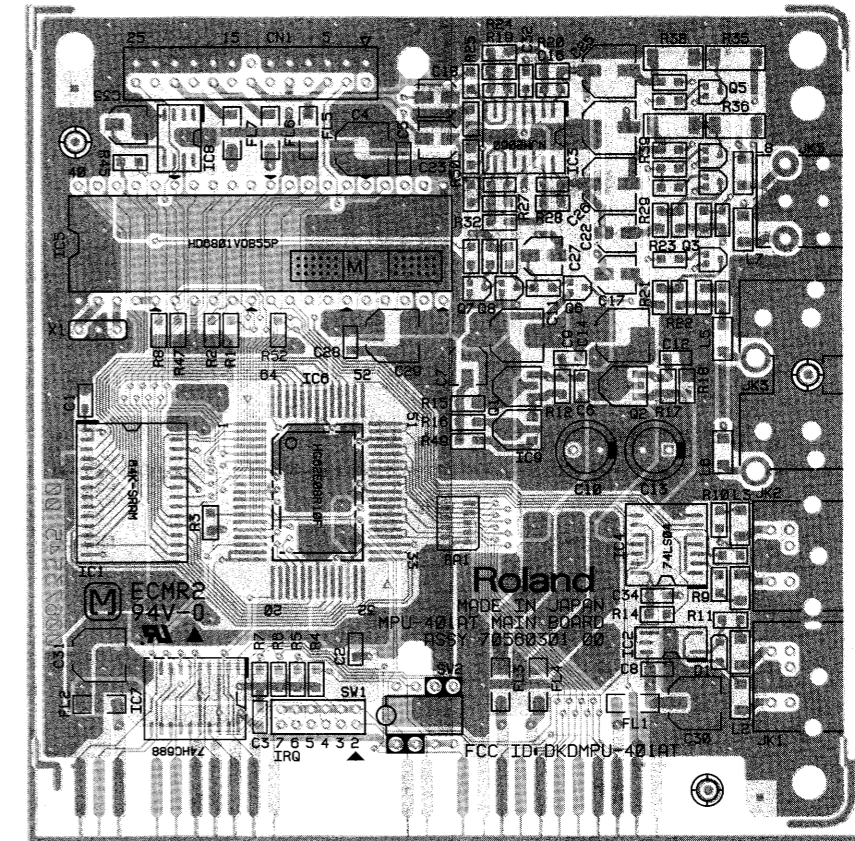
1 2 3 4 5 6 7 8 9 10 11 12 13 14 15 16 17 18 19 20 21 22 23 24 25 26 27 28 29 30

A
B
C
D
E
F
G
H
I
J
K
L
M
N
O
P
Q
R
S
T
U

BLOCK DIAGRAM/ブロック図



E MAIN PWB ASS'Y
ASSY 70560301



View from component side

1 2 3 4 5 6 7 8 9 10 11 12 13 14 15 16 17 18 19 20 21 22 23 24 25 26 27 28 29 30

A
B
C
D
E
F
G
H
I
J
K
L
M
N
O
P
Q
R
S
T
U

E MAIN PWB ASS'Y

