

6

5

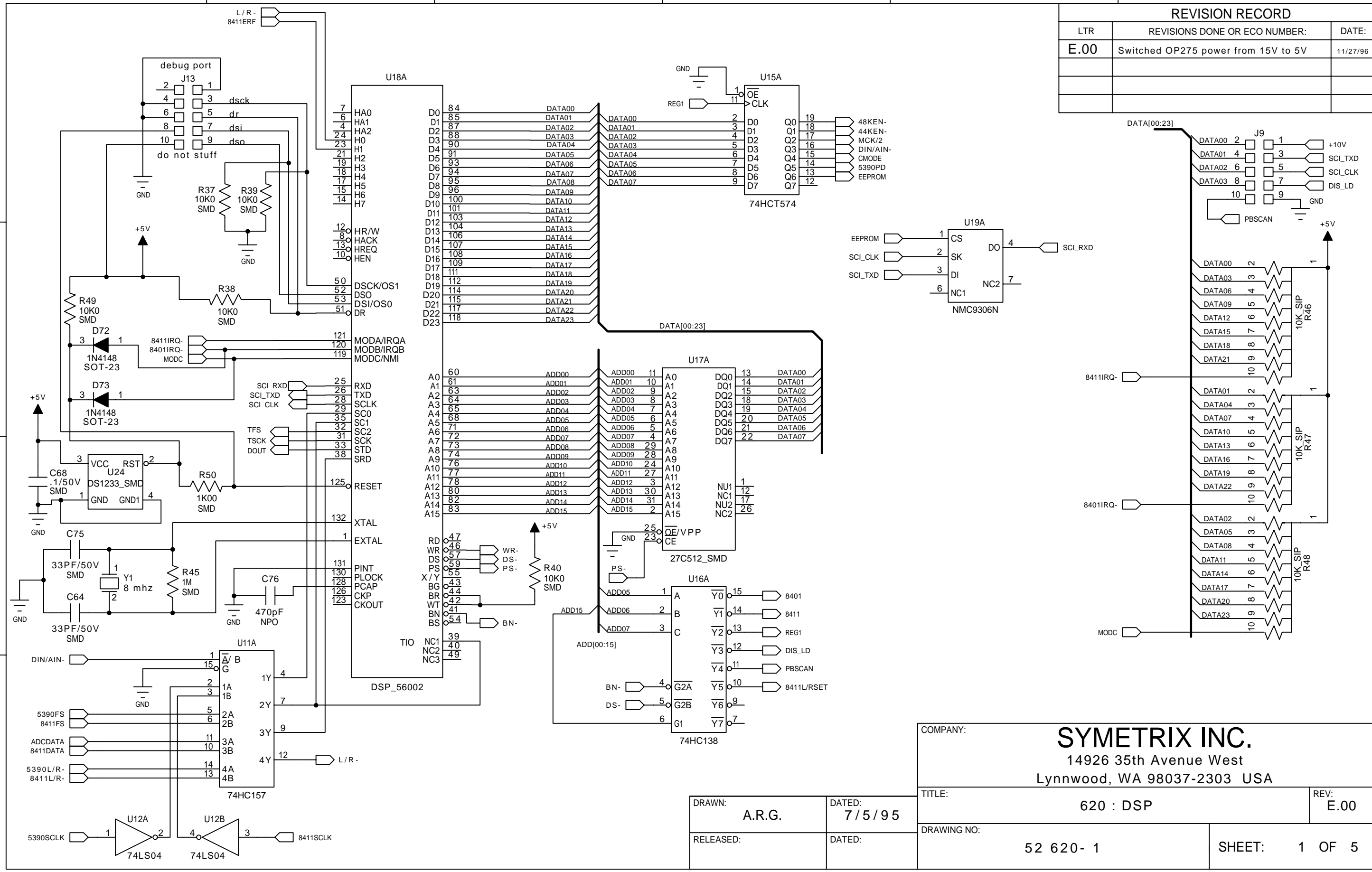
4

3

2

1

REVISION RECORD		
LTR	REVISIONS DONE OR ECO NUMBER:	DATE:
E.00	Switched OP275 power from 15V to 5V	11/27/96



COMPANY: **SYMETRIX INC.**  
 14926 35th Avenue West  
 Lynnwood, WA 98037-2303 USA

TITLE: **620 : DSP**      REV: **E.00**

DRAWING NO: **52 620- 1**      SHEET: **1 OF 5**

DRAWN: **A.R.G.**      DATED: **7/5/95**

RELEASED:      DATED:

D

D

C

C

B

B

A

A

6

5

4

3

2

1

D

D

C

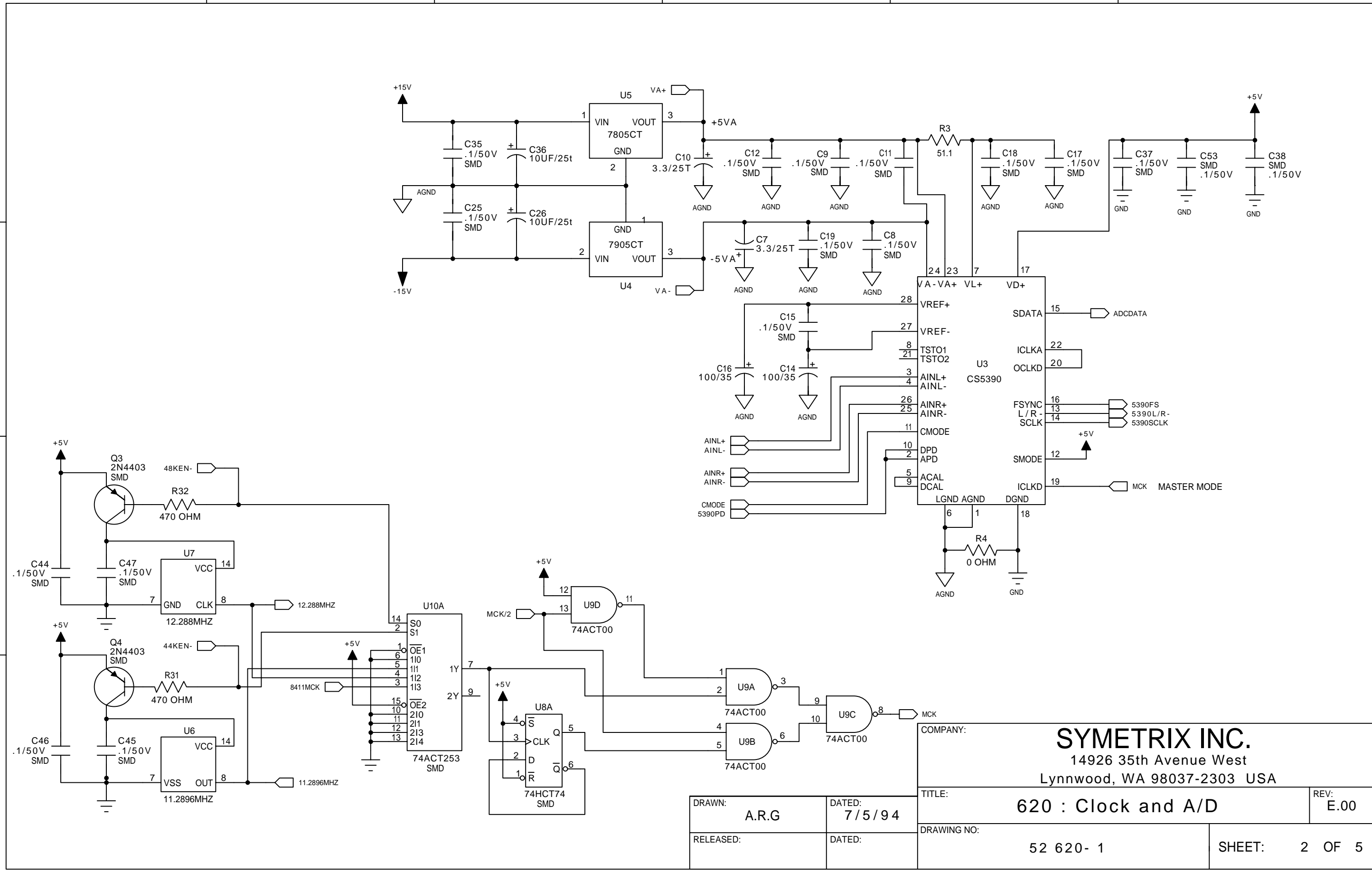
C

B

B

A

A



COMPANY:		<b>SYMETRIX INC.</b>	
		14926 35th Avenue West Lynnwood, WA 98037-2303 USA	
TITLE:		<b>620 : Clock and A/D</b>	REV: E.00
DRAWING NO:		52 620- 1	SHEET: 2 OF 5

DRAWN:	DATED:
A.R.G	7/5/94
RELEASED:	DATED:

6

5

4

3

2

1

D

D

C

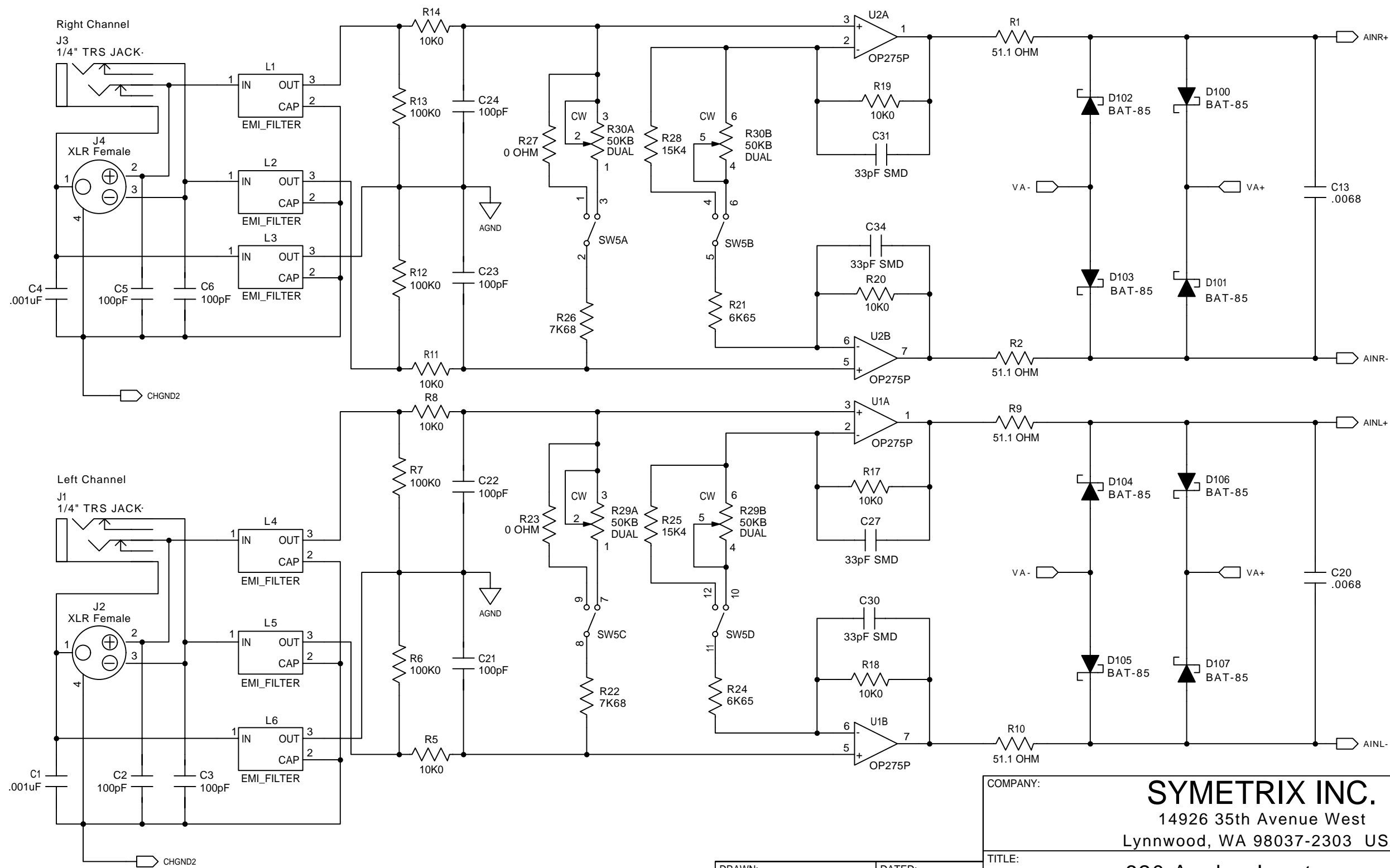
C

B

B

A

A



Note: CHGND2 attaches directly to chassis through a standoff.

COMPANY:		<b>SYMETRIX INC.</b>	
		14926 35th Avenue West Lynnwood, WA 98037-2303 USA	
TITLE:		<b>620 Analog Inputs</b>	
DRAWING NO:		52 620- 1	
SHEET:		3 OF 5	
DRAWN:	A.R.G	DATED:	9/1/94
RELEASED:		DATED:	
		TITLE:	620 Analog Inputs
		REV:	E.00

6

5

4

3

2

1

D

D

C

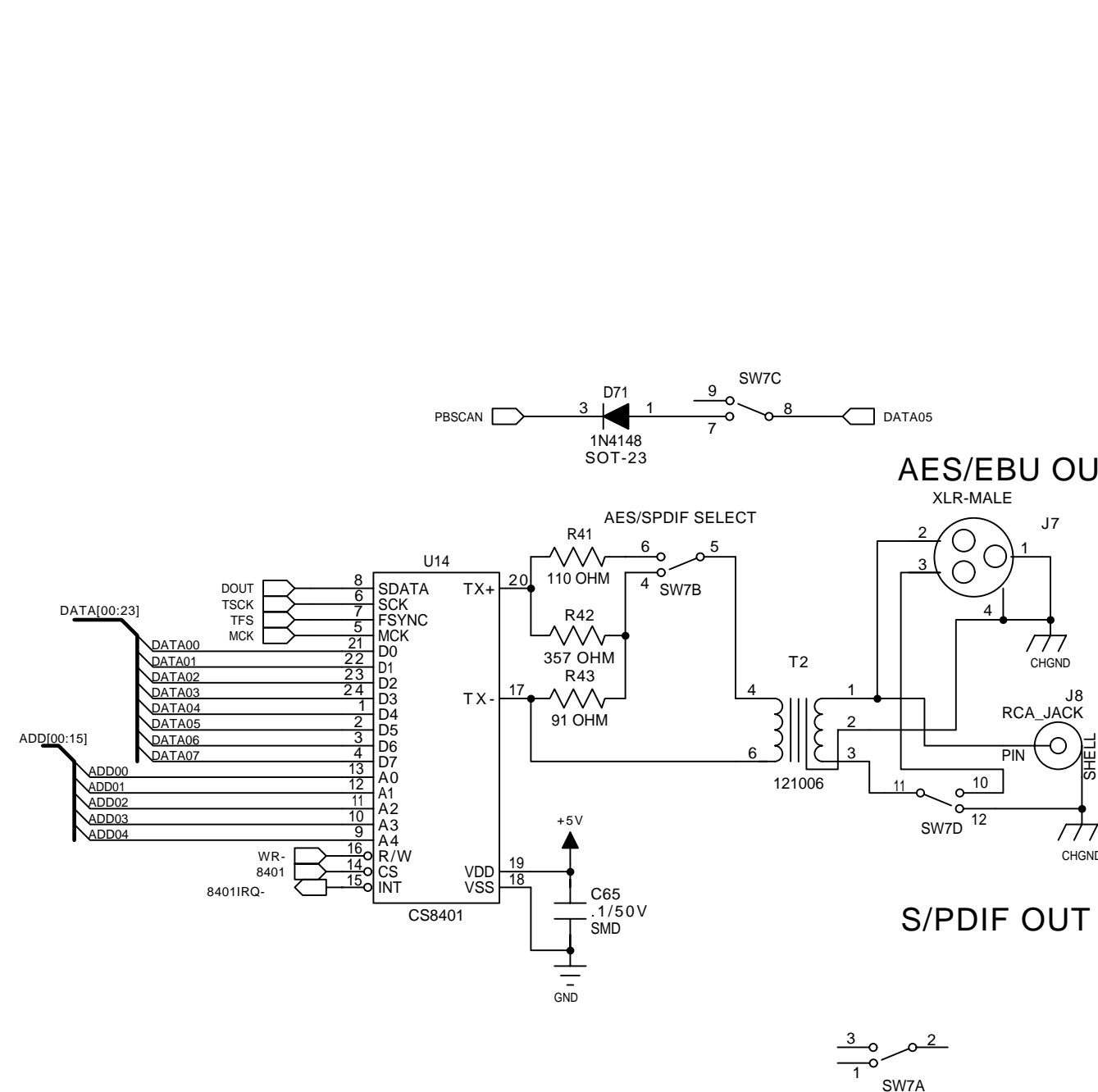
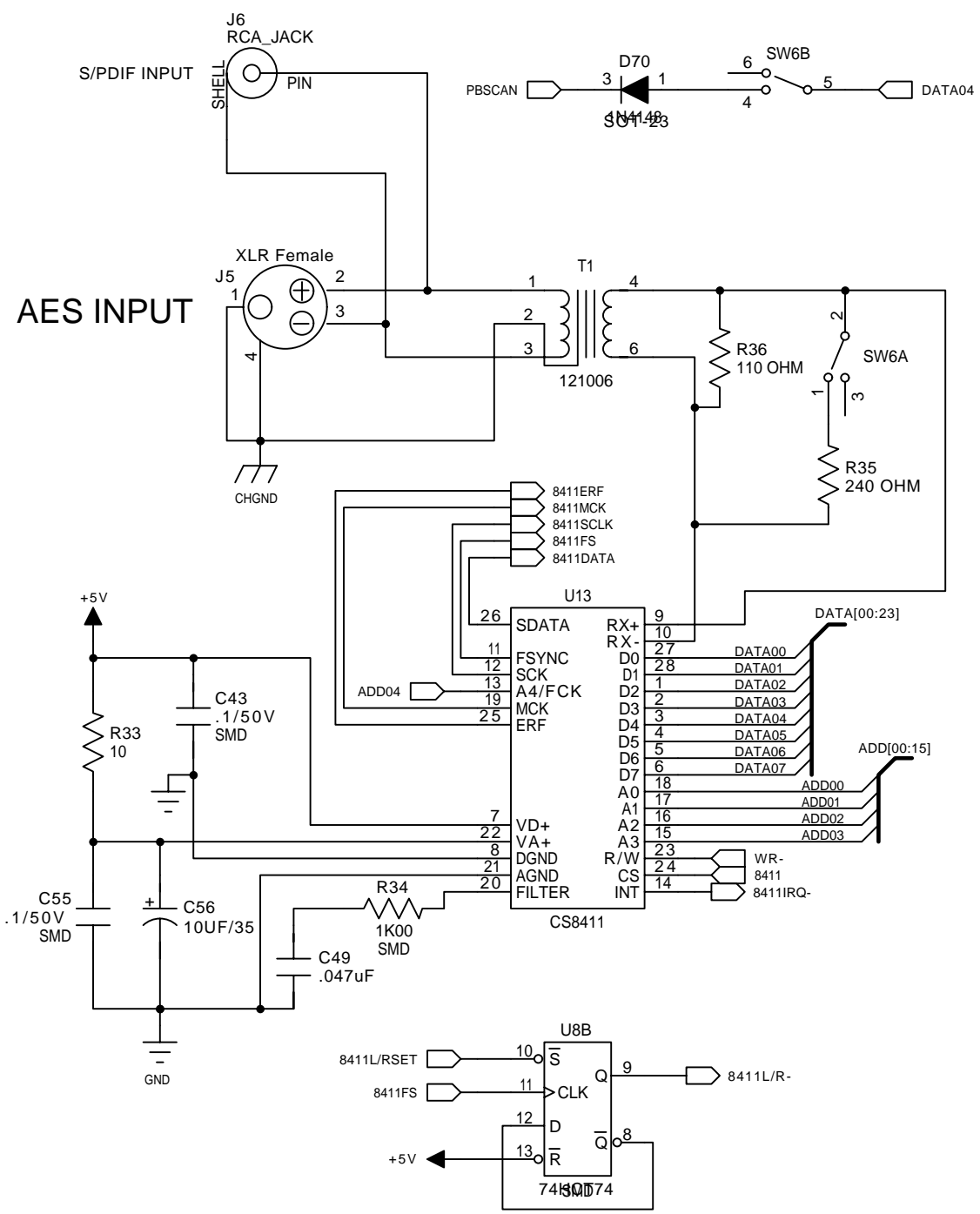
C

B

B

A

A



COMPANY: **SYMETRIX INC.**  
 14926 35th Avenue West  
 Lynnwood, WA 98037-2303 USA

DRAWN: **A.R.G.**  
 DATED: **7/12/94**  
 RELEASED:  
 DATED:

TITLE: **620 : Digital Inputs and Outputs**  
 REV: **E.00**  
 DRAWING NO: **52 620- 1**  
 SHEET: **4 OF 5**

6

5

4

3

2

1

D

D

C

C

B

B

A

A

J10-3  
J10-4  
J10-5

+22V  
J10-6  
J10-7

J10-8  
-22V

VA+  
C28  
C29  
VA-

U12C  
U12D  
U12E  
U12F

GND

U22

U23

R15

R52

+10V

J10-1

J10-2

HS\_6021

U21

LM2940CT-05

R44

Z1

+5V

+5V

U18B

DSP\_56002

U8C

74HCT74

U16B

74HC138

U17B

27C512\_SMD

U10B

74ACT253

U9E

74ACT00

U11B

74HC157

U15B

74HCT574

U19B

NMC9306N

U10B

74ACT253

J11

J12

J14

F1

F2

F3

F4

DRAWN:

A.R.G

RELEASED:

DATED:

9/1/94

DATED:

COMPANY:

SYMETRIX INC.

14926 35th Avenue West  
Lynnwood, WA 98037-2303 USA

TITLE:

620 Power Supply

DRAWING NO:

52 620- 1

REV:

E.00

SHEET:

5 OF 5