

**Agilent 66000A  
Component Level  
Information**

---

# Agilent 66000A

## Modular Power System Mainframe

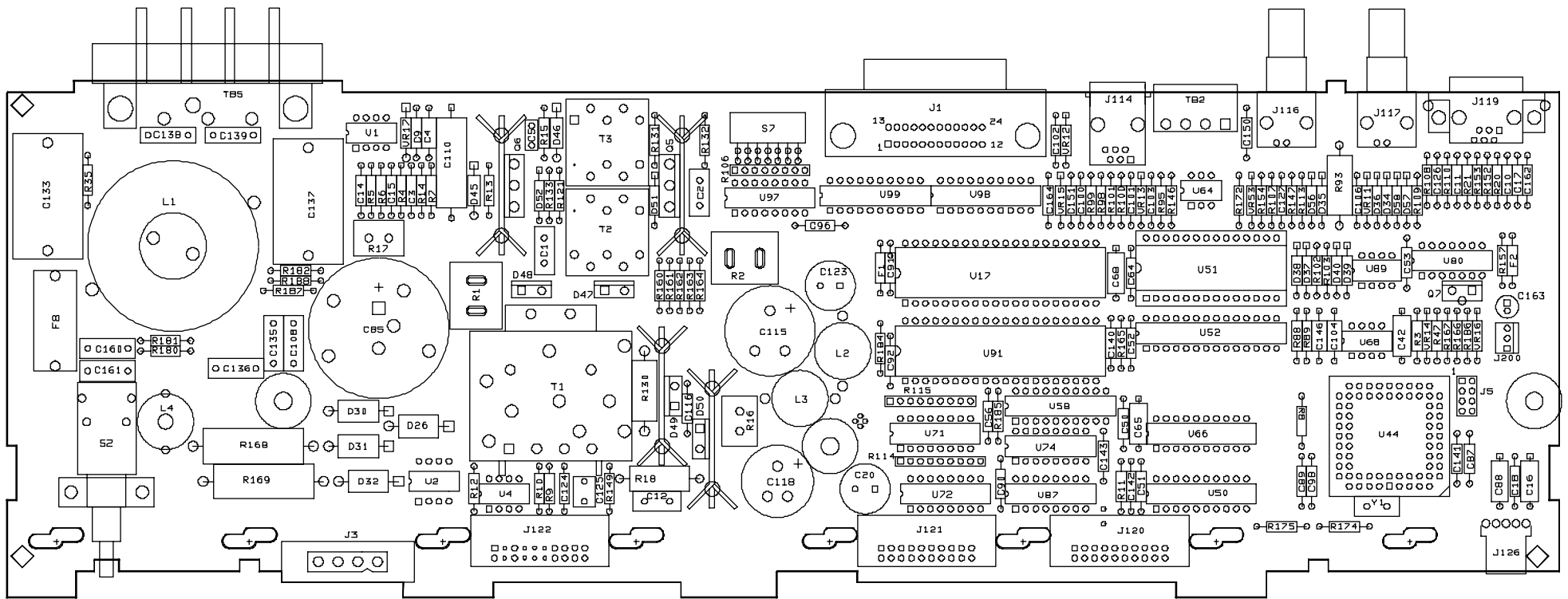
### Component Level Information

**Information in this packet applies to the following assemblies:**

- 1. 5020-8480 Main Board**
- 2. 66000-60021 Backplane Board Assembly**

**The following is included in this packet:**

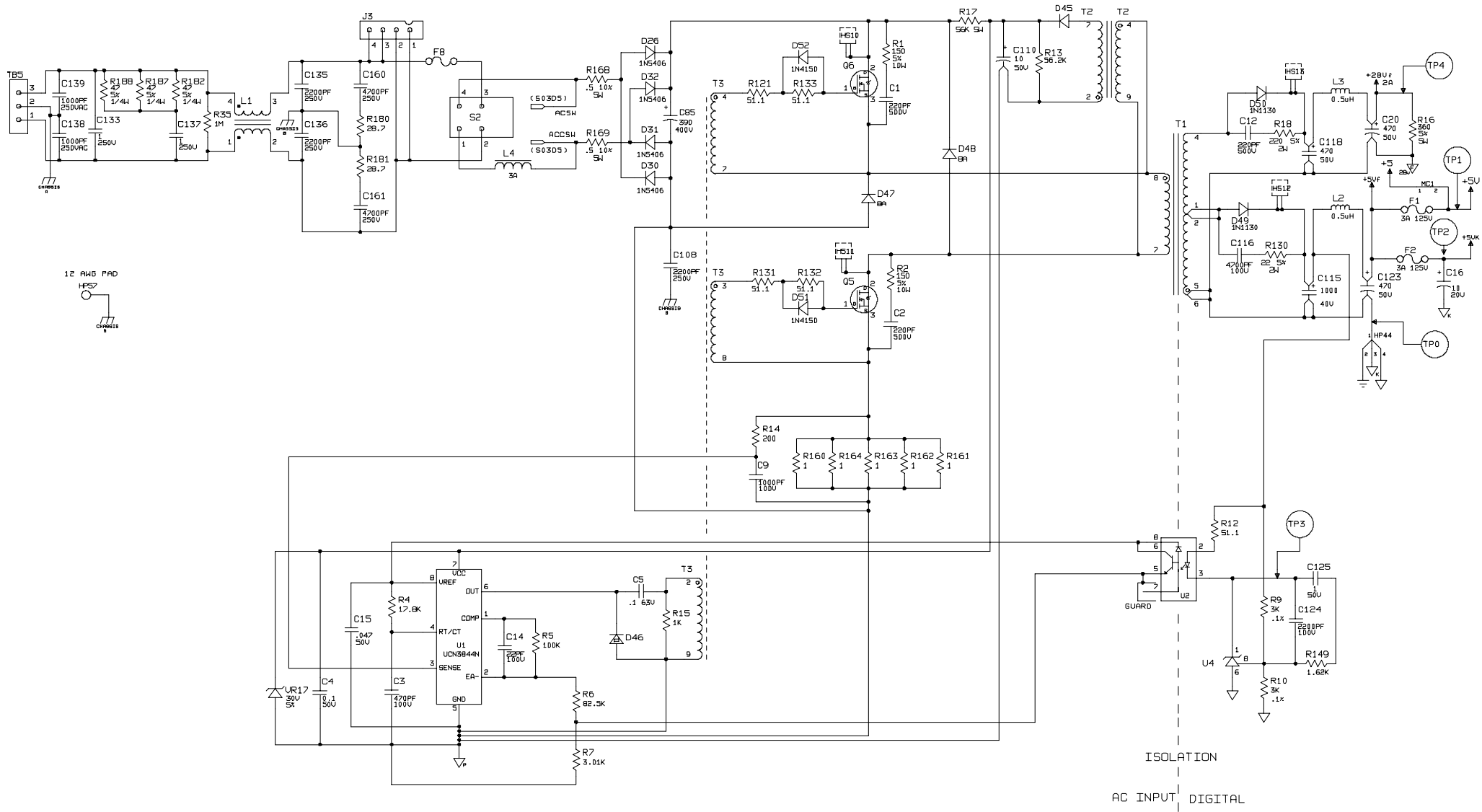
- 1. Component Locators**
- 2. Schematics**
- 3. Parts lists with Agilent and manufacturer's part numbers**



**Agilent 66000A  
Modular Power System Mainframe**

**5020-8480  
Main Board Assembly  
Component Locator**





**Agilent 66000A  
Modular Power System Mainframe**

**5020-8480  
Main Board Assembly  
Page 2 of 3**



### 5020-8480 Main Board Parts List

Reference Designator	QTY	Agilent P/N	Description	MPN	Manufacturer
C001, 2, 12	3	0160-2025	CAP-FXD 220pF +-5pct 500 V MICA	0160-2025 CD15FD221JO3	SHINNITOKU ELECTRIC CORNELL-DUBILIER ELECTRONICS
C003	1	0160-4808	CAP-FXD 470pF +-5pct 100 V CER C0G	C410C471J1G5CA SA101A471JAAH SA101A471JAAH	KEMET ELECTRONICS AVX KYOCERA
C005	1	0160-5534	CAP-FXD 0.1uF +-10pct 63 V POLYE-MET	MKS 2 MKT1817-410/065 MMK5104K63J01L6	WIMA VISHAY EVOX/RIFA
C009-11, 100, 101, 140-143, 151	10	0160-4822	CAP-FXD 1000pF +-5pct 100 V CER C0G	C420C102J1G5CA SA201A102JAAH SA201A102JAAH	KEMET ELECTRONICS AVX KYOCERA
C014	1	0160-4787	CAP-FXD 22pF +-5pct 100 V CER C0G	C410C220J1G5CA SA101A220JAA SA101A220JAA	KEMET ELECTRONICS AVX KYOCERA
C015, 17, 18, 50-53, 56, 64, 87, C90-92, 96, 106, 126, 127, 162	18	0160-5422	CAP-FXD 0.047uF +-20pct 50 V CER X7R	C420C473M5R5CA DA13X7R1H473M SA205C473MAAH	KEMET ELECTRONICS TDK AVX
C016, 42, 65, 68, 88	5	0180-4136	CAP-FXD 10uF +-10pct 20 V TA	TARS106K020 T322C106K020AS	AVX KEMET ELECTRONICS
C020, 123	2	0180-4405	CAP-FXD 470uF +-20pct 50 V AL-ELCTLT	KME50VB471M12X20LL UVZ1H471MHD	NIPPON CHEMI-CON NICHICON
C085	1	0180-4396	CAP-FXD 390uF +-20pct 400 V AL-ELCTLT	LLS2G391MELC	NICHICON
C089, 98, 102, 103	4	0160-4807	CAP-FXD 33pF +-5pct 100 V CER C0G	C410C330J1G5CA SA102A330JAAH SA102A330JAAH	KEMET ELECTRONICS AVX KYOCERA
C104, 146	3	0160-4835	CAP-FXD 0.1uF +-10pct 50 V CER X7R	C420C104K5R5CA SA105C104KAAH SA105C104KAAH	KEMET ELECTRONICS AVX KYOCERA
C108, 135, 136	3	0160-4281	CAP-FXD 2200pF +-20PCT 250 V PPR-MET	MP3Y2- 2200F/250VAC/20%,4X8.5X1 3.5, Pitch10mm PME271Y422MR30	WIMA EVOX/RIFA

### 5020-8480 Main Board Parts List

Reference Designator	QTY	Agilent P/N	Description	MPN	Manufacturer
C110	1	0180-3805	CAP-FXD 10uF +-20pct 50 V TA	T110C106M050AS	KEMET ELECTRONICS
C115	1	0180-4394	CAP-FXD 1000uF +-20pct 40 V AL-ELCTLT	300R102M040HJ2	CORNELL-DUBILIER ELECTRONICS
C116	1	0160-4831	CAP-FXD 4700pF +-10pct 100 V CER X7R	C410C472K1R5CA SA101C472KAAH SA101C472KAAH	KEMET ELECTRONICS AVX KYOCERA
C118	1	0180-4395	CAP-FXD 470uF +-20pct 50 V AL-ELCTLT	300R471M050GJ2 VPR471M050J1L3B	CORNELL-DUBILIER ELECTRONICS AERO M
C124, 150	2	0160-4830	CAP-FXD 2200pF +-10pct 100 V CER X7R	C410C222K1R5CA SA101C222KAAH SA101C222KAAH	KEMET ELECTRONICS AVX KYOCERA
C125	1	0160-5469	CAP-FXD 1uF +-10PCT 50 V POLYE-MET	MKS 2 1.0/10/50 PCM5 TR MMK5105K50J02TR18	WIMA EVOX/RIFA
C133, 137	2	0160-7606	CAP-FXD 1uF +-20PCT 275 V POLYE-MET	PHE820MF7100MR06L2 MKP-X2- 1uF/275Vac/20%,13X24X31.5 ,Pitch 27.55mm	EVOX/RIFA WIMA
C138, 139	2	0160-4183	CAP-FXD 1000pF +-20pct 250 V PPR-MET	PME271Y410MR30	EVOX/RIFA
C160, 161	2	0160-4439	CAP-FXD 4700pF +-20pct 1 kV PPR-MET	PME271Y447MR30	EVOX/RIFA
D026, 30-32	4	1901-1087	DIODE-PWR RECT 600V 3A 200NS	G1856 MR856RLG	VISHAY ON SEMICONDUCTOR
D034-40, 51, 52, 56-58	12	1901-1098	DIODE-SWITCHING 1N4150 50V 200MA 4NS	1N4150 1N4150	FAIRCHILD SEMICONDUCTOR ROHM
D045	1	1901-1214	DIODE-PWR RECT 600V 1A 50NS	MUR160RLG	ON SEMICONDUCTOR
D046	1	1901-1128	DIODE-SCHOTTKY 40V 1A	1N5819RLG	ON SEMICONDUCTOR
D047, 48	2	1901-1130	DIODE-GEN PRP 600V 8A 50NS TO-220AC	BYV29-500 MUR860G BYV29-500	PHILIPS ON SEMICONDUCTOR NXP
D049, 50 U860	2	66000-60003	ASSY 860/29-500		
D049a	1	0361-1641	EYELET-RLD-FLG .121-OD .187-LG .0095-THK	GS 4-6 STEEL-TIN PLATE	STIMPSON EDWIN B
D049b	1	1205-0571	HEAT SINK SGL PLSTC-PWR-CS	6232B-MT	AAVID THERMALLOY
D049c	1	1901-1130	DIODE-GEN PRP 600V 8A 50NS TO-220AC	BYV29-500 MUR860G BYV29-500	PHILIPS ON SEMICONDUCTOR NXP



### 5020-8480 Main Board Parts List

Reference Designator	QTY	Agilent P/N	Description	MPN	Manufacturer
F001	1	2110-0688	FUSE-SUBMINIATURE 3A 125V NTD AX UL-LST	0251003 L	LITTELFUSE
F002	1	2110-0699	FUSE-SUBMINIATURE 5A 125V NTD AX UL-LST	0251005 L	LITTELFUSE
F008	1	2110-0925	FUHLR-CLP-TYP 6.3A 250V UL/CSA	OGN 031.8201	SCHURTER
J001	1	1252-0268	CONN-RECT MICRORBN 24-CKT 24-CONT	68519-001	FCI FRAMATOME BERG
J003	1	1252-4307	CONN-UTIL P-and-SKT 4-CONT-POS 4-CONT	PLA04F300A1	POSITRONIC INDUSTRIES
J005	1	1251-4926	CONN-HDR VERT 8-PIN 2.54MM 2-ROW	67996-108HLF HTSW-104-07-SM-D	FCI FRAMATOME BERG SAMTEC
J114	1	1251-7330	MODULAR PHONE RCPT RIGHT ANGLE PC MOUNT	5520250-3 95009-2661	TYCO ELECTRONICS AMP MOLEX
J116, 117	2	1250-1842	CONNECTOR-RF BNC FEMALE PC-W-STDFS	5227677-1 31-5506	TYCO ELECTRONICS AMP AMPHENOL
J119	1	1252-1014	CONN-RECT SDL 6-CKT 6-CONT	5-1761185-2	TYCO ELECTRONICS AMP
J120-122	3	1251-8667	CONN-POST TYPE .100-PIN-SPCG-MTG-END	5-534978-3	TYCO ELECTRONICS AMP
J126	1	1251-8675	CONN-POST TYPE .100-PIN-SPCG-MTG-END	1107-12-105-01	METHODE ELECTRONICS
L001	1	66000-80004	CHOKE-INPUT		
L002, 3 0380-0625	2	66000-80003	CHOKE-OUTPUT		
L004	1	06024-80094	CHOKE-RFI		
Q005, 6 IRFP450	2	66000-60002	ASSY-HS IRFP450		
Q005, 6 IRFP450 a	1	1205-0571	HEAT SINK SGL PLSTC-PWR-CS	6232B-MT	AAVID THERMALLOY
Q005, 6 IRFP450 b	1	0515-0911	SCREW-MACH M3 X 0.5 12MM-LG PAN-HD ; SCR	0515-0911 0515-0911 0515-0911 0515-0911	ILLINOIS TOOL WORKS LINFAS FASTENERS MID-CONTINENT SCREW PROD TEXTRON
Q005, 6 IRFP450 c	1	1855-0682	TRANSISTOR MOSFET N-CHAN E-MODE SI	IRFP450 IRFP450PBF	STATITE VISHAY
Q005, 6 IRFP450 d	1	0535-0031	NUT-HEX; W/LOCKWASHER M3 X 0.5 2.4MM-THK; M3 X 0.5 THREAD; 5	0535-0031	HOUSE OF METRICS
R	2	0757-0398	RESISTOR 75 +-1pct .125W TF TC=0+-100	5053HD75R00F CMF-5575R0FT-1	VISHAY BC COMPONENTS VISHAY
R001, 2	2	0699-3196	RES 150 5pct 10W	MNS10N151JNI	R G ALLEN
R004	1	0698-3136	RESISTOR 17.8K +-1pct .125W TF TC=0+-100	5053HD17K80F CMF-551782FT-1 NK4H.125W1%+/- 100PPM1782	VISHAY BC COMPONENTS VISHAY E-SIL COMPONENTS

### 5020-8480 Main Board Parts List

Reference Designator	QTY	Agilent P/N	Description	MPN	Manufacturer
R005	1	0757-0465	RESISTOR 100K +-1pct .125W TF TC=0+-100	5053HD100K0F CMF-551003FT-1 NK4H.125W1%+/- 100PPM1003	VISHAY BC COMPONENTS VISHAY E-SIL COMPONENTS
R006	1	0757-0463	RESISTOR 82.5K +-1pct .125W TF TC=0+-100	5053HD82K50F CMF-558252FT-1 NK4H.125W1%+/- 100PPM8252	VISHAY BC COMPONENTS VISHAY E-SIL COMPONENTS
R007	1	0757-0273	RESISTOR 3.01K +-1pct .125W TF TC=0+-100	5053HD3K010F CMF-553011FT-1 NK4H.125W1%+/- 100PPM3011	VISHAY BC COMPONENTS VISHAY E-SIL COMPONENTS
R009, 10, 89	3	0698-6348	Resistor 4.64K 1% .1W	CMF-553001BT-9 MBB0207-25 0.1%__3K	VISHAY VISHAY BC COMPONENTS
R012, 121, 131-133	5	0757-0394	RESISTOR 51.1 +-1pct .125W TF TC=0+-100	5053HD51R10F CMF-5551R1FT-1 NK4H.125W1%+/- 100PPM51R1	VISHAY BC COMPONENTS VISHAY E-SIL COMPONENTS
R013	1	0757-0459	RESISTOR 56.2K +-1pct .125W TF TC=0+-100	5053HD56K20F CMF-555622FT-1 NK4H.125W1%+/- 100PPM5622	VISHAY BC COMPONENTS VISHAY E-SIL COMPONENTS
R014	1	0757-0407	RESISTOR 200 +-1pct .125W TF TC=0+-100	5053HD200R0F CMF-552000FT-1 NK4H.125W1%+/- 100PPM200R0	VISHAY BC COMPONENTS VISHAY E-SIL COMPONENTS
R015	1	0757-0280	RESISTOR 1K +-1pct .125W TF TC=0+-100	5053HD1K000F CMF-551001FT-1 NK4H.125W1%+/- 100PPM1001	VISHAY BC COMPONENTS VISHAY E-SIL COMPONENTS
R016	1	0699-3419	RES-FXD 360 OHM +-5PCT 5W TC 0+-50	PWRG5-36R-5% CPCF05360R0JE66	TT ELECTRONICS VISHAY
R017	1	0699-3420	RESISTOR 56K +-5pct 5W TKF TC=0+-50	CPCF-5 56K 5% PWRG5-56-5%	VISHAY TT ELECTRONICS

### 5020-8480 Main Board Parts List

Reference Designator	QTY	Agilent P/N	Description	MPN	Manufacturer
R018	1	0698-3628	RESISTOR 220 +-5pct 2W MO TC=0+-200	FP69 220R 5% GS-32200 MO2C__221J	VISHAY TT ELECTRONICS KOA
R035, 172	2	0698-8827	RESISTOR 1M +-1pct .125W TF TC=0+-100	5053HD1M000F CMF-551004FT-1	VISHAY BC COMPONENTS VISHAY
R088	1	0698-7933	RESISTOR 3.83K +-0.1pct .125W TF TC=0+-25	B0207E3K830B CMF-553831BT-9	VISHAY BC COMPONENTS VISHAY
R093	1	0698-3625	RESISTOR 160 +-5pct 2W MO TC=0+-200	FP69 160R 5% GS-31600	VISHAY TT ELECTRONICS
R095	1	0698-3439	RESISTOR 178 +-1pct .125W TF TC=0+-100	5053HD178R0F CMF-551780FT-1 NK4H.125W1%+/- 100PPM178R0	VISHAY BC COMPONENTS VISHAY E-SIL COMPONENTS
R098, 100, 102, 103	4	0698-4037	RESISTOR 46.4 +-1pct .125W TF TC=0+-100	5053HD46R40F CMF-5546R4FT-1 NK4H.125W1%+/- 100PPM46R4	VISHAY BC COMPONENTS VISHAY E-SIL COMPONENTS
R106	1	1810-0206	NET-RES 7 10.0K OHM 8-PIN	750-81 MSP08A01-103G 4308R-94Y-103LF	TT ELECTRONICS VISHAY BOURNS
R107, 108, 110, 146, 165	5	0757-0442	RESISTOR 10K +-1pct .125W TF TC=0+-100	5053HD10K00F CMF-551002FT-1 NK4H.125W1%+/- 100PPM1002	VISHAY BC COMPONENTS VISHAY E-SIL COMPONENTS
R109, 147, 185	3	0698-0082	RESISTOR 464 +-1pct .125W TF TC=0+-100	5053HD464R0F CMF-554640FT-1 NK4H.125W1%+/- 100PPM464R0	VISHAY BC COMPONENTS VISHAY E-SIL COMPONENTS
R113, 152-154	4	0683-1015	RES-FXD 100 OHM +-5PCT .25W CF TC 0+-300	CF1/4-101J CF1/4C__101J	ASJ KOA
R114, 115	2	1810-0305	NET-RES 8 4.7K OHM 9-PIN	908-472G CSC09A01-472K	EPITEK ELECT VISHAY

### 5020-8480 Main Board Parts List

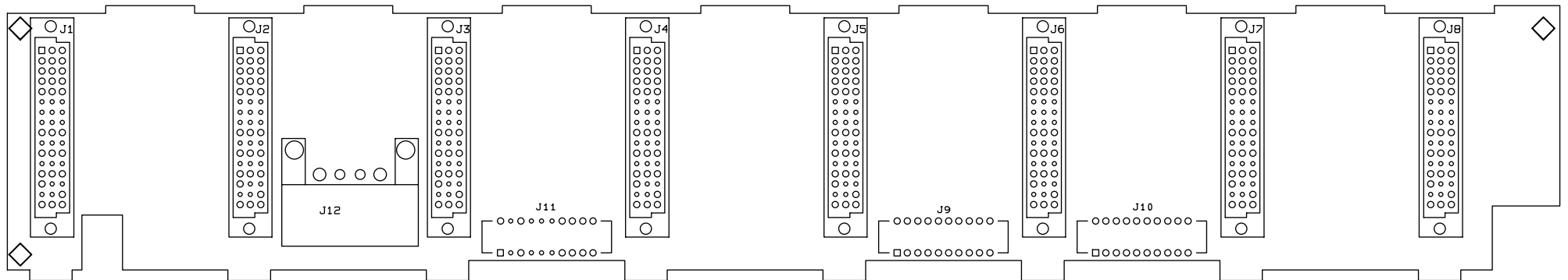
Reference Designator	QTY	Agilent P/N	Description	MPN	Manufacturer
R130	1	0698-3609	RESISTOR 22 +-5pct 2W MO TC=0+-200	FP69 22R0 5% GS-322R0 MO2C__220J	VISHAY TT ELECTRONICS KOA
R149	1	0757-0428	RESISTOR 1.62K +-1pct .125W TF TC=0+-100	5053HD1K620F CMF-551621FT-1 NK4H.125W1%+/- 100PPM1621	VISHAY BC COMPONENTS VISHAY E-SIL COMPONENTS
R160-164	5	0698-8812	RESISTOR 1 +-1pct .125W TF TC=0+-100	5053HD1R000F CMF-551R0FT-1	VISHAY BC COMPONENTS VISHAY
R168, 169	2	0811-1848	RESISTOR .5 +-10pct 5W PWI TC=0+-90	CW-50 R510% T5	VISHAY TT ELECTRONICS
R180, 181	2	0698-3433	RESISTOR 28.7 +-1pct .125W TF TC=0+-100	CMF-5528R7FT-1 5053HD28R70F NK4H.125W1%+/- 100PPM28R7	VISHAY VISHAY BC COMPONENTS E-SIL COMPONENTS
R182, 187	2	0686-2705	RESISTOR 27 +-5pct .5W CC TC=0+412		
R3, 11, 20, 21, 47, 99, 101, 157, 166, R167, 184	12	0698-3155	RESISTOR 4.64K +-1pct .125W TF TC=0+-100	5053HD4K640F CMF-554641FT-1 NK4H.125W1%+/- 100PPM4641	VISHAY BC COMPONENTS VISHAY E-SIL COMPONENTS
REF J001	2	0515-0406	SCREW-MACH M3 X 0.5 8MM-LG PAN-HD ; SCREW-MACHINE ; M3.0 X 0.50; 8 MM LONG	0515-0406 0515-0406 0515-0406 0515-0406	ILLINOIS TOOL WORKS LONG-LOK FASTENER MID-CONTINENT SCREW PROD TEXTRON
REF J125	1	1258-0209	JUMPER-REMOVABLE 2 POSITION; .250 IN	68786-202LF 382811-6	FCI FRAMATOME BERG TYCO ELECTRONICS AMP
REF S7	1	1200-0485	SOCKET-IC-DIP 14-CONT DIP DIP-SLDR	14-820-90 CA-14S-10 RAC1-01	ARIES ELECTRONICS CIRCUIT ASSEMBLY

**5020-8480 Main Board Parts List**

Reference Designator	QTY	Agilent P/N	Description	MPN	Manufacturer
REF TB005	2	0515-1146	SCREW-MACHINE ASSEMBLY M3 X 0.5 6MM-LG ; SCREW-MACHINE ASSEMBLY ; M3.0 X 0.50; 6 MM LONG; POZIDRIV ; RECESS, PAN; STAINLESS STEEL-300 ; SERIES, PASSIVATED FINISH; ; EXTERNAL TOOTH LOCKWASHER IFI ; TYPE A; PER IFI NO. 513/531/532	0515-1146 0515-1146 0515-1146 0515-1146 SMME0300060D-PPENSVN	HOUSE OF METRICS ILLINOIS TOOL WORKS MID-CONTINENT SCREW PROD TEXTRON EXIM & MFR ENTERPRISE
REF TB005, J001	4	0590-1076	THREADED INSERT-NUT M3 X 0.5 1.5-MM-LG	HCM-M3-2-STAINLESS STEEL KFS2-M3	TR FASTENINGS PENN ENGINEERING & MFG
REF U044	1	1200-1274	SOCKET-IC-PLCC 68-CONT SQUARE DIP-SLDR	1-822473-6 PLCC68PT2	TYCO ELECTRONICS AMP FCI FRAMATOME BERG
REF U051	1	1200-0567	SOCKET-IC-DIP 28-CONT DIP DIP-SLDR	1-390262-2 DILB28P223TLF	TYCO ELECTRONICS AMP FCI FRAMATOME BERG
S002	1	3101-2808	SWITCH-PB DPSTALTNG 4A 250 VAC	602226	ITT INDUSTRIES
S007	1	3101-2097	SWITCH-DIP SPST 0.1A 50VDC	206-0204	CTS
T001	1	9100-4933	XFMR-FLYBACK	9100-4933	AGILENT TECHNOLOGIES
T002	1	66000-80001	XFMR-BIAS/PRI		
T003	1	66000-80002	XFMR-DRIVER		
TB002	1	0360-2312	TERMINAL BLOCK 4-TERM .039 IN SQUARE	ELFH04110 MSTBA 2.5/4-G-BLK(176064) 871904	PCD PHOENIX CONTACT & CO AXSYS TECHNOLOGIES
TB005	1	0360-2421	BARRIER BLOCK 3-TERM RIGHT ANGLE 5 POSN	SSB7FF031501NNNN A307103-NL-R50-AB	HARVARD REMEC
U001	1	1826-2056	IC PWR MGT-V-REG-SWG 4.9/5.1V 8 PINS	UC3844P	TEXAS INSTRUMENTS
U002	1	1990-1502	OPTO-ISOLATOR LED-PDIO IF=8MA-MAX BVR=5V	HCPL-4503-000E	AVAGO TECHNOLOGIES
U004	1	1826-1343	IC PWR MGT-V-REF-ADJ 2.5/36V 8 PINS	TL431CP	TEXAS INSTRUMENTS
U017	1	1822-1330	IC GPIB CONTROLLER 40-PDIP	14063-502	AMIS SEMICONDUCTOR
U044	1	1821-1479	IC 16-BIT MCU 16-MHZ CMOS 68-PLCC	C	INTEL
U050	1	1820-2724	IC LCH TTL/ALS TRANSPARENT OCTL	DM74ALS573BN SN74ALS573CN	FAIRCHILD SEMICONDUCTOR TEXAS INSTRUMENTS
U052	1	1818-4134	IC 64K BIT SRAM 20-NS CMOS 28-DIP	CY7C185-20PXC	CYPRESS SEMICONDUCTOR
U058	1	66000-80010	PRGMD-GAL, GLUE 1820-5398		
U058a	1	1820-5398	IC PLD EEPLD UNPRGMD CMOS GAL16V8	GAL16V8D-25QP	LATTICE SEMICONDUCTOR

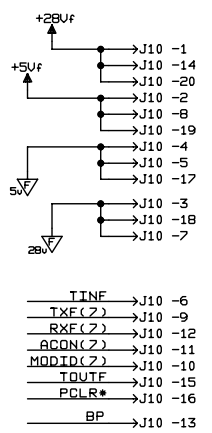
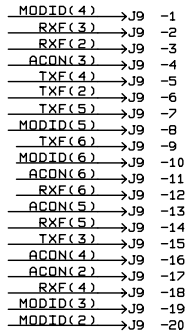
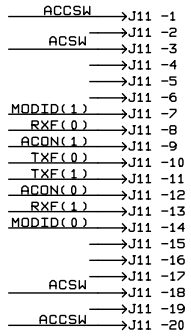
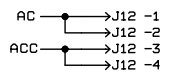
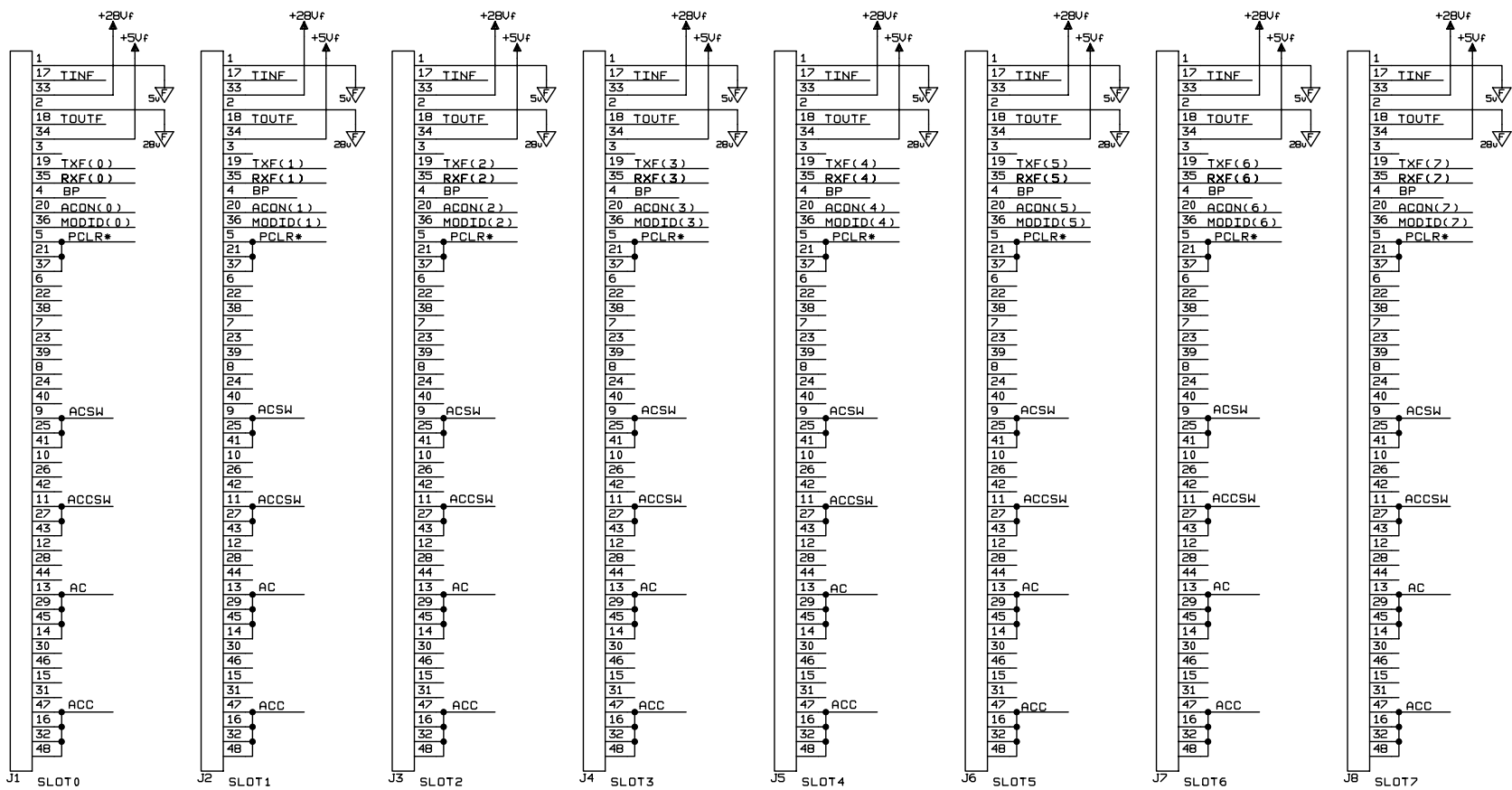
### 5020-8480 Main Board Parts List

Reference Designator	QTY	Agilent P/N	Description	MPN	Manufacturer
REF U058, 66	2	1200-0639	SOCKET-IC-DIP 20-CONT DIP DIP-SLDR	1-390261-6 DILB20P-223TLF	TYCO ELECTRONICS AMP FCI FRAMATOME BERG
U064	1	1990-1074	S1C-LTB	4N35-M	FAIRCHILD SEMICONDUCTOR
U068	1	1826-2341	IC PWR MGT-V-REG-SWG 8 PINS DIP-P PKG	TL7702BCP	TEXAS INSTRUMENTS
U071, 72, 97	3	1820-3176	IC MUXR/DATA-SEL CMOS/HC 8-TO-1-LINE	MM74HC151N	FAIRCHILD SEMICONDUCTOR
U074, 87	2	1820-3206	IC LCH CMOS/HC ADDRESSABLE POS-EDGE-TRIG	MM74HC259N	FAIRCHILD SEMICONDUCTOR
U089	1	1820-6789	IC INTERFACE XCVR BIPOLAR LINE GENERAL	SN75176BP DS75176BNNOPB	TEXAS INSTRUMENTS NATIONAL SEMICONDUCTOR
U091	1	1821-4383	IC INTERFACE U.A.R.T. CMOS COMMUNICATION	XR-68C681CP	EXAR
U098	1	1820-6045	IC INTERFACE XCVR BIPOLAR INSTRUMENT BUS	SN75ALS161N	TEXAS INSTRUMENTS
U099	1	1820-6170	IC INTERFACE XCVR BIPOLAR BUS OCTL	SN75ALS160N	TEXAS INSTRUMENTS
VR011, 12, 14, 15	4	1902-0953	DIODE-ZNR 6.2V 5PCT DO-35 PD .4W TC +.053PCT	1N753A	MICROSEMI
VR013	1	1902-0959	DIODE-ZNR 11V 5pct DO-35 PD=.4W TC=+.076pct	1N962B	MICROSEMI
VR053	1	1902-0766	DIODE-ZNR 18.2V 5pct DO-35 PD=.4W	1N5248B	MICRO COMMERCIAL COMPONENTS
VR4(REF COO4)	1	1902-0244	DIODE-ZNR 30V 5pct PD=1W IR=5UA	1N4751A 1N4751A	FAIRCHILD SEMICONDUCTOR MICRO COMMERCIAL COMPONENTS
Y001	1	0410-2109	CRYSTAL-QUARTZ 12.000 MHZ	AT-51-12.000MHZ HC49S-12MHZ KD2109	NIHON DEMPA KOGYO FOX ELECTRONICS KYUSHU DENTSU



**Agilent 66000A  
Modular Power System Mainframe**

**66000-60021  
Backplane Board Assembly  
Component Locator**



**Agilent 66000A  
 Modular Power System Mainframe**

**66000-60021  
 Backplane Board Assembly**

Page 1 of 1



**66000-60021 Backplane Board Assembly Parts List**

<b>Reference Designator</b>	<b>QTY</b>	<b>Agilent P/N</b>	<b>Description</b>	<b>MPN</b>	<b>Manufacturer</b>
SNAP-PIN	16	0361-1375	RIVET-SHLDR UNIV-HD .108DIA .204LG	1189-2506	TEXTRON
J009-11	3	1251-8666	CONN-POST TYPE .100-PIN-SPCG-MTG-END	5-534204-9	TYCO ELECTRONICS AMP
J012	1	1252-4306	CONN-UTIL P-and-SKT 4-CONT-POS 4-CONT	PLA04M4BN0A1	POSITRONIC INDUSTRIES
J001-8	8	1251-8414	CONN-POST TYPE .100-PIN-SPCG-MTG-END	5535071-4 20-8457-048-001-025	TYCO ELECTRONICS AMP KYOCERA

Manual Part Number: 5989-6863EN  
Printed in U.S.A. April 2007  
Copyright © 2007 Agilent Technologies, Inc. All Rights Reserved.

