

**EVERYTHING 4 LESS**

**ENJOY YOUR BOOKS**

**PLEASE VISIT OUR STORE FOR EVEN MORE GREAT STUFF!**

**[WWW.EVERYTHING4LESSSTORE.COM](http://WWW.EVERYTHING4LESSSTORE.COM)**

**COPYRIGHT NOTICE**

**ALL MATERIALS INCLUDING CD/DVD AND PDF FILES ARE COPYRIGHTED**

**[WWW.EVERYTHING4LESSSTORE.COM](http://WWW.EVERYTHING4LESSSTORE.COM) VON WALTHOUR PRODUCTIONS AND MAY NOT BE REPRODUCED, COPIED OR RESOLD UNDER ANY CIRCUMSTANCES. YOU MAY HOWEVER MAKE A COPY FOR YOUR OWN PERSONAL BACKUP. MATERIALS ARE FOR PERSONAL USE ONLY.**

**IF YOU PURCHASED THIS FROM ANYWHERE BUT FROM US PLEASE NOTIFY US IMMEDIATELY SO THAT WE MAY CHECK IF YOU PURCHASED FROM AN AUTHORIZED RESELLER SO WE CAN LET YOU KNOW IF YOU NEED TO RETURN FOR FULL REFUND FROM AN UNAUTHORIZED SELLER.**

**THANKS AGAIN AND PLEASE TAKE THE TIME TO VISIT OUR STORE.**

**ATTENTION! EVERYTHING ON SALE NOW!!**



**HOT SALE!**

# Instruction Manual

for



## GENERAL PURPOSE MARINE RECEIVER (TYPE 2207C)

*Handbook Ref. R.37/58*

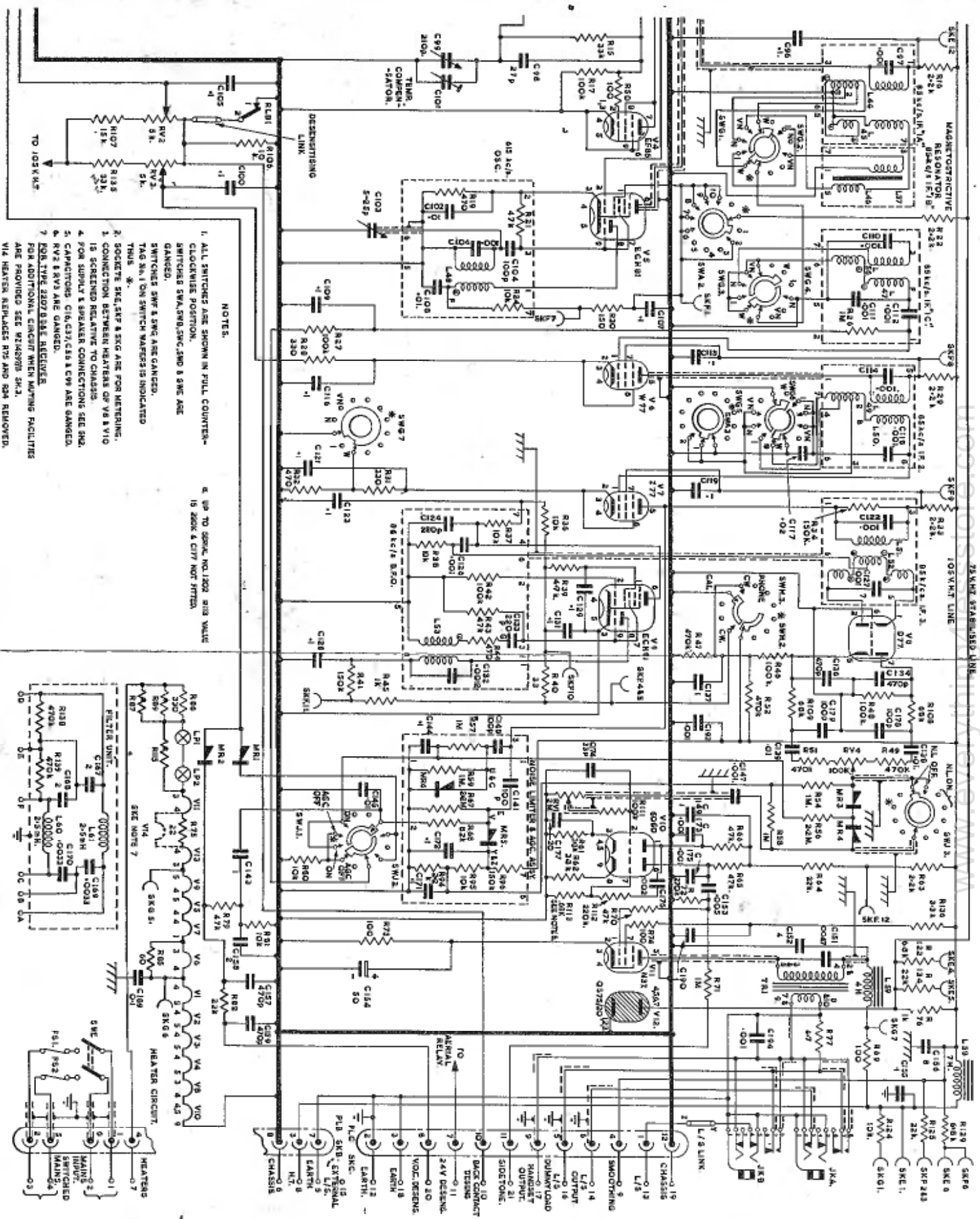
*Published by*  
Technical Information Branch, Technical Division  
THE MARCONI INTERNATIONAL MARINE  
COMMUNICATION COMPANY LTD.  
Marconi House, Chelmsford, Essex

www.everything4lessstore.com



“Atalanta” general purpose marine receiver (type 2207C)

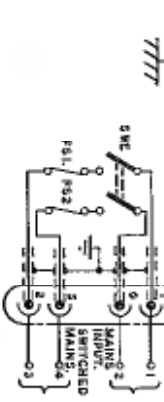
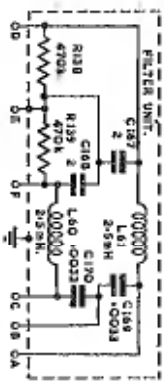
www.everything4lessstore.com



**NOTES.**

1. ALL SWITCHES ARE SHOWN IN FULL COUNTER-CLOCKWISE POSITION.
2. SWITCHES SW4, SW5, SW6 & SW6 ARE GANGED.
3. SWITCHES SW7 & SW8 ARE GANGED.
4. TAG SW. 1 ON SWITCH WATERS IS INDICATED THUS \*.
5. SOCKET SK5, SK7 & SK8 ARE FOR NETWORKING.
6. CONNECTION BETWEEN HEATERS OF V6 & V10 IS SCREENED RELATIVE TO CHASSIS.
7. FOR SUPPLY & SPEAKER CONNECTIONS SEE SK2.
8. CAPACITORS C16, C31, C38, & C39 ARE GANGED.
9. V2 & V3 ARE GANGED.
10. FOR TYPE 2207 BEBE RECEIVER FOR ADDITIONAL CIRCUIT WHEN WATERS FACILITIES ARE PROVIDED SEE W123978 SK.2.
11. VIA HEATER REPLACES R15 AND R24 REMOVED.

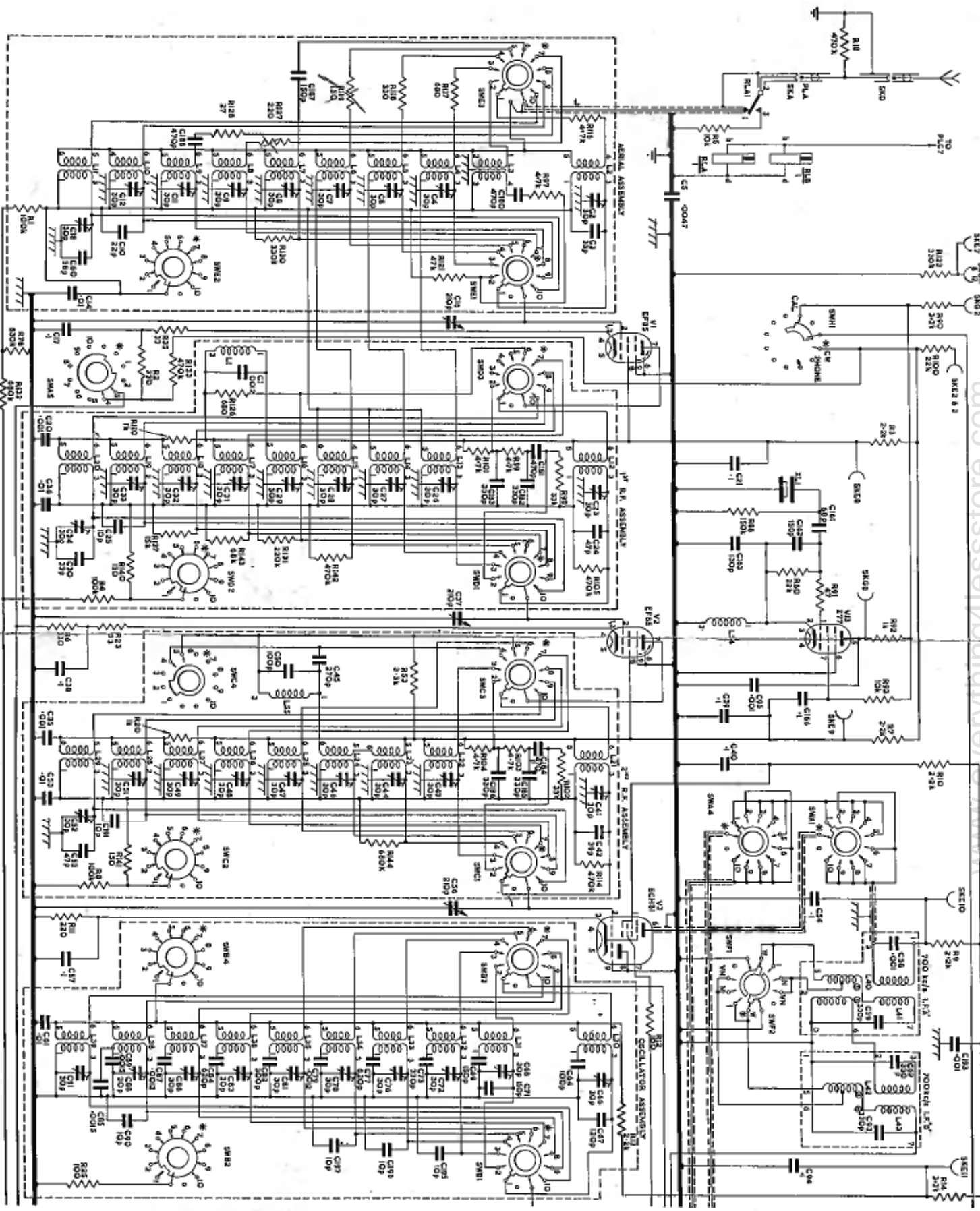
\* GO TO GEORGE NO. 1202 R13 WATER IS 20K & CITY NOT FITTED.



Issue No. 7  
Sheet No. 2

**CIRCUIT DIAGRAM "ATALANTA" RECEIVER TYPE 2207C (PART 2)**

W.50259



Issue No. 4  
 Sheet No. 1  
**CIRCUIT DIAGRAM "ATALANTA" RECEIVER TYPE 2207C**  
 W.50259



**EVERYTHING 4 LESS**



**ENJOY YOUR BOOKS**



**PLEASE VISIT OUR STORE FOR EVEN MORE GREAT STUFF!**

**[WWW.EVERYTHING4LESSSTORE.COM](http://WWW.EVERYTHING4LESSSTORE.COM)**

**COPYRIGHT NOTICE**

**ALL MATERIALS INCLUDING CD/DVD AND PDF FILES ARE COPYRIGHTED**

**[WWW.EVERYTHING4LESSSTORE.COM](http://WWW.EVERYTHING4LESSSTORE.COM) VON WALTHOUR PRODUCTIONS AND MAY NOT BE REPRODUCED, COPIED OR RESOLD UNDER ANY CIRCUMSTANCES. YOU MAY HOWEVER MAKE A COPY FOR YOUR OWN PERSONAL BACKUP. MATERIALS ARE FOR PERSONAL USE ONLY.**

**IF YOU PURCHASED THIS FROM ANYWHERE BUT FROM US PLEASE NOTIFY US IMMEDIATELY SO THAT WE MAY CHECK IF YOU PURCHASED FROM AN AUTHORIZED RESELLER SO WE CAN LET YOU KNOW IF YOU NEED TO RETURN FOR FULL REFUND FROM AN UNAUTHORIZED SELLER.**

**THANKS AGAIN AND PLEASE TAKE THE TIME TO VISIT OUR STORE.**

**ATTENTION! EVERYTHING ON SALE NOW!!**



**HOT SALE!**

**THIS PAGE COPYRIGHT VON WALTHOUR PRODUCTIONS  
[WWW.EVERYTHING4LESSSTORE.COM](http://WWW.EVERYTHING4LESSSTORE.COM)**