

Installing Nikon View 4 under Windows

Installing Nikon View 4 for the D1, D1x and D1H

Nikon View 4 includes an image database application. Before installing Nikon View 4, install any image database software that you intend to use in combination with Nikon View 4. The application can then be used catalog images as they are transferred to disk. To display NEF (RAW data) and YCbCr-TIFF files in the Photoshop version 5.0 or later, install the Nikon NEF and YCbCr-TIFF plug-ins.

Step 1—Install Bundled Software

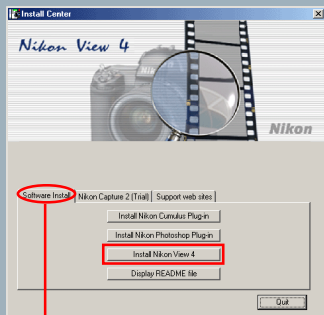
Image Database Software

If the user wishes to use image database software, the software must be installed before installing Nikon View 4.

Bundled Software may differ in each country or area.

Step 2—Install Nikon View 4

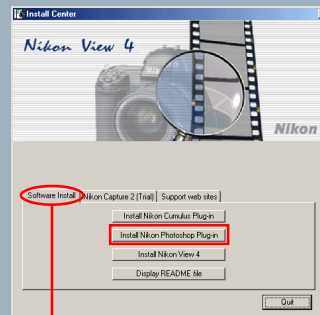
Install Nikon View 4



Software Install tab

Step 3—Install Nikon Photoshop Plug-in

Install Nikon Photoshop Plug-in



Software Install tab

Click this button to install the Nikon NEF and YCbCr-TIFF plug-ins for Photoshop version 5.0 or later. These plug-ins can only be installed if Photoshop version 5.0 or later has already been installed.

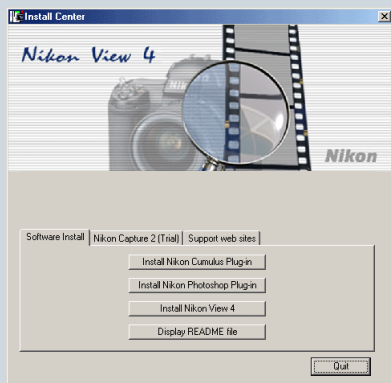
[Click here](#)  to proceed to the next step.

Log On

When installing, uninstalling or using Nikon View 4, log on as the “Administrator” (Windows 2000 Professional) or “Computer Administrator” (Windows XP Home Edition/Windows XP Professional).

After starting your computer, insert the Nikon View 4 CD into the CD-ROM drive. The Nikon View Welcome program will be launched automatically. Select a language from the pop-up menu that appears and click **Next**. The Install Center window (Welcome window) will then appear. The Welcome window has three tabs, the Software Install tab, the Nikon Capture 2 (Trial) tab and the Support web sites tab.

Software Install



Install Nikon Cumulus Plug-in

- Click to install the Nikon filter for Cumulus image database software

Install Nikon Photoshop Plug-in

- Click to install the Nikon NEF and YCbCr-TIFF plug-ins

Install Nikon View 4

- Click to install Nikon View 4

Display README file

- Click to view the ReadMe file

Support web sites



Click this button to view the Nikon technical support web site for your area (your computer must be configured for connection to the Internet)

www.nikon-euro.com

- For users in Europe

www.nikon-asia.com

- For users in Asia, Oceania, the Middle East, and Africa

www.nikonusa.com

- For users in the United States of America

Quit

- Click this button to close the Welcome window

Canto Cumulus software is not provided for European customers. Please use the Fotostation Browser software which is provided on a separate CD-ROM.

Click [here](#)  to proceed to the next step.

If the Welcome Dialog Does Not Appear


If the Welcome dialog does not appear when the CD-ROM is inserted in the drive:

1. Double-click the **My Computer** icon
2. In the My Computer window, use the right mouse button to click on the icon for the CD-ROM drive containing the Nikon View 4 CD
3. Select **Autorun** from the menu that appears

Step 1—Install Bundled Software

Before installing Nikon View 4, install any image database software you intend to use in combination with Nikon View 4.

I-1: Install image database software

Please install the image database software included with Nikon View 4. After installing image database software, proceed to the next step. If you intend to install Cumulus 5.0, click [here](#) .

Bundled Software may differ in each country or area.

Click [here](#)  to proceed to the next step.



Image Database Applications

The following applications are supported under Nikon View 4:

- **Cumulus 5.0** (Canto Software): images registered in catalog
- FotoStation 4.0 (FotoWare): images registered in folder
- PC-Archive (Nikon): images registered in folder

Step 2—Install Nikon View 4

After installing image database software, you are ready to install Nikon View 4.

2-1: Start the Nikon View 4 installer

Click **Install Nikon View 4** in the Software Install tab of the Welcome window to begin installation of Nikon View 4.

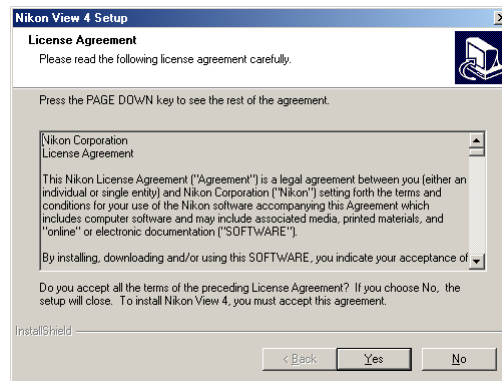


Existing Versions of Nikon View

If an older version of Nikon View 4 is already installed on your computer, it will be automatically overwritten when the new version is installed. If a version of NikonView DX is installed on your computer, it must be uninstalled before installing Nikon View 4. Nikon View 4 does not support connection of COOLPIX950, 900s, 900, 800, or 700 digital cameras. NikonView 4 can be used to view the photographs taken with these cameras when the camera memory card is inserted into a card slot or card reader.

2-2: Accept the license agreement

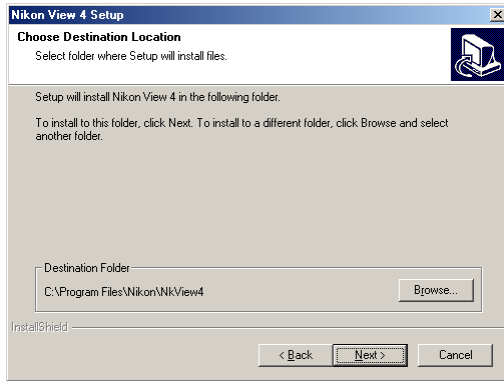
The license agreement is displayed at the start of installation. After reading the agreement, click **Yes** to continue installation.



Click [here](#)  to proceed to the next step.

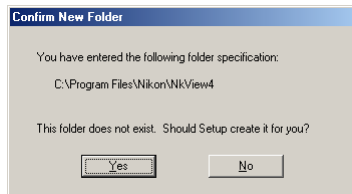
2-3: Choose a location for Nikon View 4

The folder to which Nikon View 4 will be installed is shown in the **Destination Folder** text box. To select a new folder, click the **Browse...** button and navigate to the desired location.



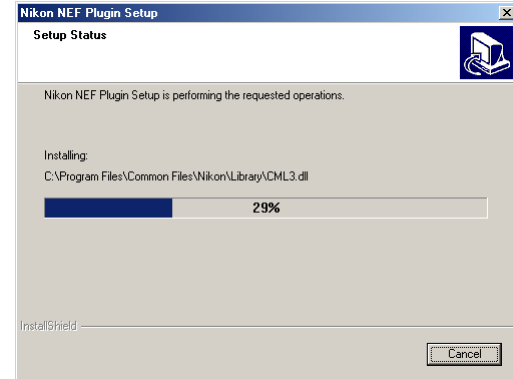
2-4: Create the destination folder

If the folder selected in Step 2-3 does not already exist, you will be asked whether you wish to create the folder. Click **Yes** to create the folder automatically and proceed to the next step.



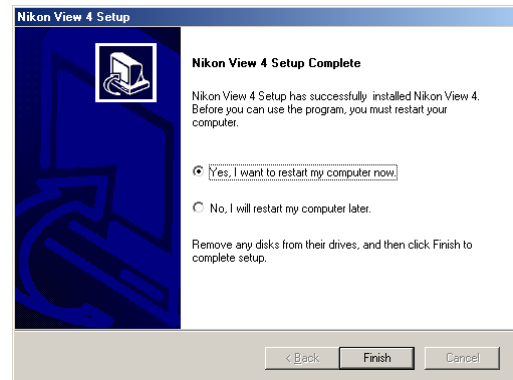
2-5: Installation

While installation is in progress, the dialog shown below will be displayed.



2-6: Restart the computer

When installation is complete, the dialog shown below will be displayed. Confirm that **Yes, I want to restart my computer now** is checked and click **Finish** to restart your computer. If you wish to install the Nikon Plugins without restarting your computer first, select, **No, I will restart my computer later** before clicking **Finish**. You can then restart your computer after installing all of the other applications.



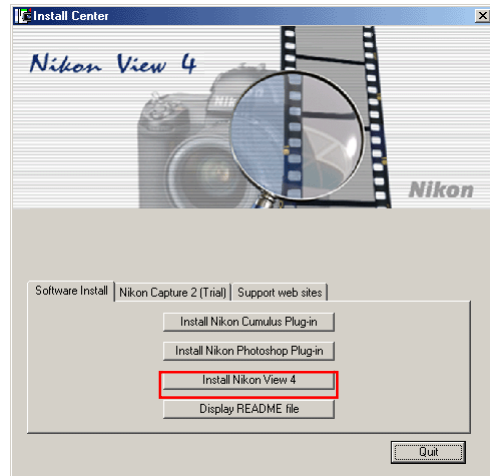
Click [here](#)  to proceed to the next step.

Step 3—Install Nikon Photoshop Plug-in

If you plan to view NEF (RAW data) or YCbCr-TIFF images using Photoshop 5.0 or later, you will also need to install the Nikon NEF and YCbCr-TIFF plug-ins.

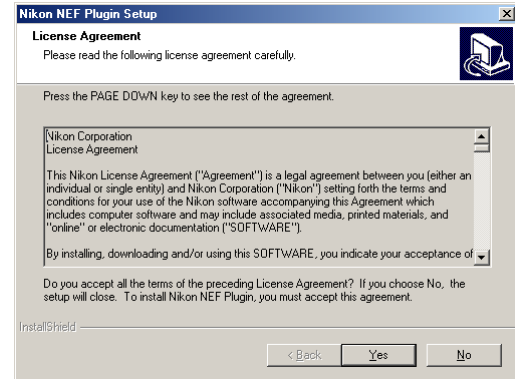
3-1: Start the installer for the Nikon Photoshop Plug-In

Click **Install Nikon Photoshop Plug-in** in the Software Install tab of the Welcome window to begin installation of the Nikon NEF and YCbCr-TIFF plug-ins. If you will not be using Photoshop 5.0 or later, proceed to [Step 3-6](#).



3-2: Accept the license agreement

The license agreement is displayed at the start of installation. After reading the agreement, click **Yes** to continue installation.



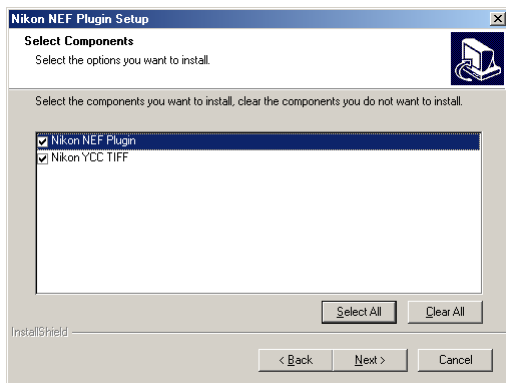
Click [here](#)  to proceed to the next step.

If Photoshop 5.0 or Later Is Not Installed

If you attempt to install the Photoshop plug-in when Photoshop 5.0 or later is not installed, the plug-ins will be installed into the same folder as Nikon View. Install the plug-ins after having installed Photoshop version 5.0 or later. After installing Photoshop, if you want to view NEF and YCbCr-TIFF images you will need to install the respective plug-ins, Nikon NEF Plugin.8Bi and Nikon YCC TIFF.8Bi. The plug-ins should be installed into the Plug-Ins\File Formats folder (Plug-Ins\Adobe Photoshop Only\File Formats folder for Photoshop 6.0; Plug-Ins\Formats folder for Photoshop 5.0 LE - note however that the YCC TIFF plug-in can not be used with Photoshop LE; only the NEF Plug-In can be used). The File Formats folders can be found in the same folder to which Photoshop is installed.

3-3: Choose the components to be installed

Place a check next to the components you wish to install. Any components that are not checked will not be installed.



The Nikon NEF Plug-In

The Nikon NEF plug-in is required when using Photoshop 5.0 or later to open NEF (RAW data) images taken with a Nikon digital camera.

The YCbCr-TIFF Plug-In

The YCC TIFF plug-in is required when using Photoshop 5.0 or later to open YCbCr-TIFF images taken with a Nikon digital camera. Note that the YCC TIFF plug-in can not be used with Photoshop LE.

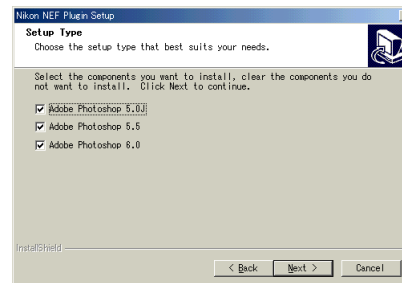
The following components are available:

Option	Description
Nikon NEF Plugin	Installs the Nikon NEF plug-in
Nikon YCC TIFF	Installs the YCbCr-TIFF plug-in

Click [here](#)  to proceed to the next step.

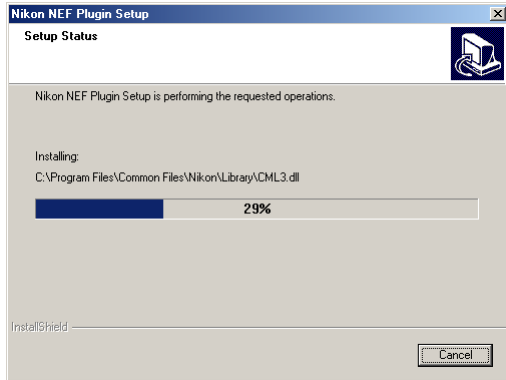
If more than one version of Photoshop is installed

If more than one version of Photoshop (5.0 or later) is installed on your computer please select the version in which you wish to install Photoshop Plug-In.



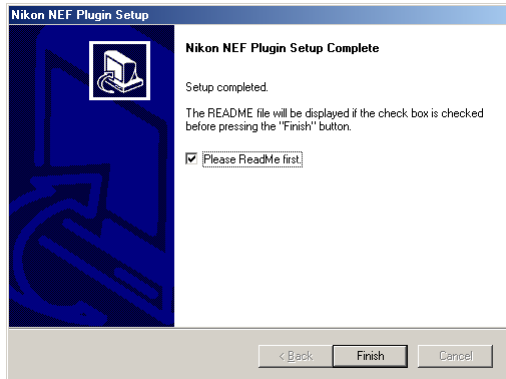
3-4: Installation

While installation is in progress, the dialog shown below will be displayed.



3-5: View the ReadMe file

When installation is complete, the dialog shown below will be displayed. Confirm that **Please ReadMe first** is checked and click **Finish** to display the ReadMe file. Take a few moments to view this file, which may contain important information that could not be included in this manual.



3-6: Exit the installer

Click the **Quit** button in the Welcome window to exit the installer.



Click [here](#)  to return to the Nikon View 4 Reference Manual.