

Installing Nikon View 4 on a Macintosh

Installing Nikon View 4 for the D1, D1x and D1H

Nikon View 4 includes an image database application. Before installing Nikon View 4, install any image database software that you intend to use in combination with Nikon View 4. The application can then be used catalog images as they are transferred to disk. To display NEF (RAW data) and YCbCr-TIFF files in the Photoshop version 5.0 or later, install the Nikon NEF and YCbCr-TIFF plug-ins.

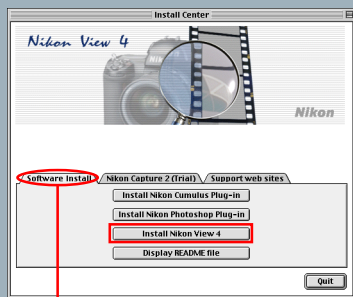
Step 1—Install Bundled Software

Image Database Software

If the user wishes to use image database software, the software must be installed before installing Nikon View 4.

Bundled Software may differ in each country or area.

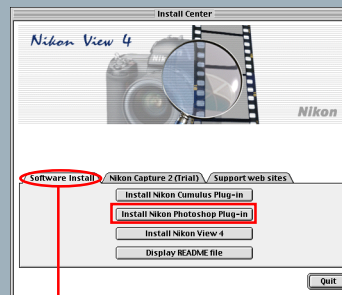
Step 2—Install Nikon View 4



Software Install tab

Install Nikon View 4

Step 3—Install Nikon NEF Plug-ins



Software Install tab

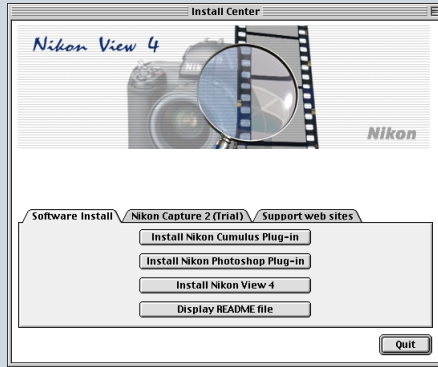
Install Nikon Photoshop Plug-in

Click this button to install the Nikon NEF and YCbCr-TIFF plug-ins for Photoshop version 5.0 or later. These plug-ins can only be installed if Photoshop version 5.0 or later has already been installed.

Click [here](#)  to proceed to the next step.

After starting your computer, insert the Nikon View 4 CD into the CD-ROM drive. The Nikon View Welcome program will be launched automatically. Select a language from the pop-up menu that appears and click **Next**. The Install Center window (Welcome window) will then appear. The Welcome window has three tabs, the Software Install tab, the Nikon Capture 2 (Trial) tab and the Support web sites tab.

Software Install



Install Nikon Cumulus Plug-in

- Click to install the Nikon filter for Cumulus image database software

Install Nikon Photoshop Plug-in

- Click to install the Nikon NEF and YCbCr-TIFF plug-ins

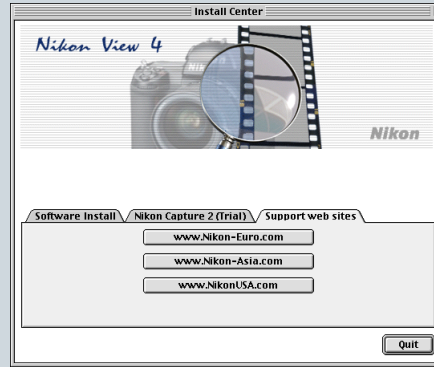
Install Nikon View 4

- Click to install Nikon View 4

Display README file

- Click to view the ReadMe file

Support web sites



Click this button to view the Nikon technical support web site for your area (your computer must be configured for connection to the Internet)

www.Nikon-Euro.com

- For users in Europe

www.Nikon-Asia.com

- For users in Asia, Oceania, the Middle East, and Africa

www.NikonUSA.com

- For users in the United States of America

Quit

- Click this button to close the Welcome window


Canto Cumulus software is not provided for European customers. Please use the Fotostation Browser software which is provided on a separate CD-ROM.

Click [here](#)  to proceed to the next step.

Step 1—Install Bundled Software

Before installing Nikon View 4, install any image database you intend to use in combination with Nikon View 4.

I-1: Install image database software

Please install the image database software included with Nikon View 4. After installing image database software, proceed to the next step. If you intend to install Cumulus 5.0, click [here](#) .

Bundled Software may differ in each country or area.

Click [here](#)  to proceed to the next step.



Image Database Applications

The following applications are supported under Nikon View 4:

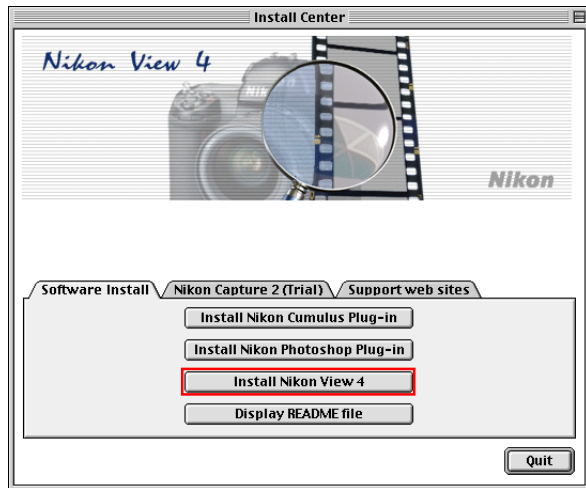
- **Cumulus 5.0** (Canto Software): images registered in catalog
- FotoStation 4.0 (FotoWare): images registered in folder
- iViewMediaPro (iView Multimedia): images registered in catalog

Step 2—Install Nikon View 4

After installing image database software, you are ready to install Nikon View 4.

2-1: Start the Nikon View 4 installer

Click **Install Nikon View 4** in the Software Install tab of the Welcome window to begin installation of Nikon View 4.



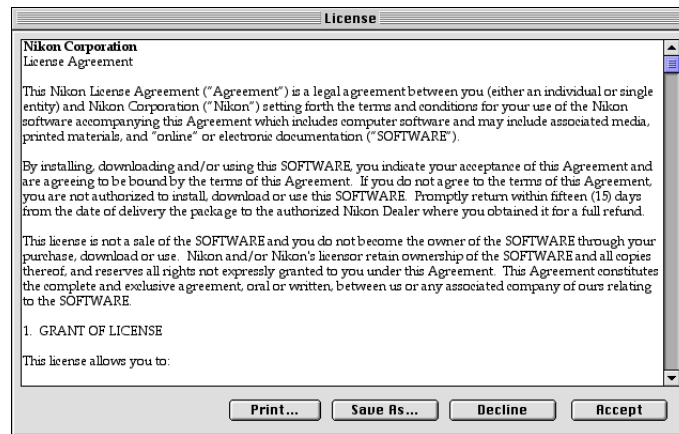
Existing Versions of Nikon View

If an older version of Nikon View is already installed on your computer, it will be automatically overwritten when the new version is installed.

Nikon View 4 does not support connection of COOLPIX950, 900s, 900, 800, or 700 digital cameras. Nikon View 4 can be used to view the photographs taken with these cameras when the camera memory card is inserted into a card slot or card reader.

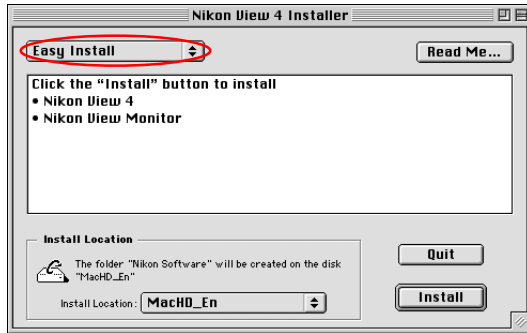
2-2: Accept the license agreement

The license agreement is displayed at the start of installation. After reading the agreement, click **Accept** to display the ReadMe file. Take a few moments to view this file, which may contain important information that could not be included in this manual.



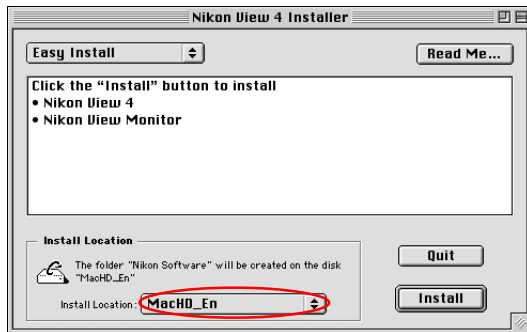
2-3: Select the installation type

Choose **Easy Install** from the pop-up menu at the top left corner of the Nikon View Installer dialog.



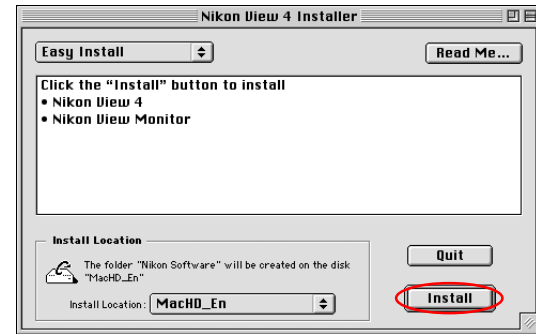
2-4: Choose a location for Nikon View 4

The disk and folder to which Nikon View 4 will be installed are shown in the Install Location panel. Choose a new disk from the **Install Location** pop-up menu, or choose **Select Folder...** to navigate to the desired location.



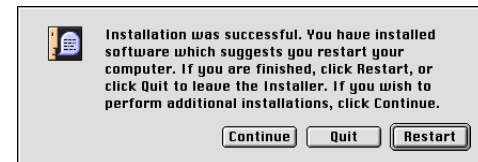
2-5: Start installation

To install Nikon View 4 to the selected location, click the **Install** button in the Nikon View Installer dialog. A progress meter will be displayed during installation.



2-6: Quit the installer

When installation is complete, the dialog shown below will be displayed. Click the **Restart** button to restart your computer. If you do not want to restart your computer straightaway, but want to continue and install Nikon View Filter, then click the **Quit** button, and restart the computer later once you have completed the other installations.



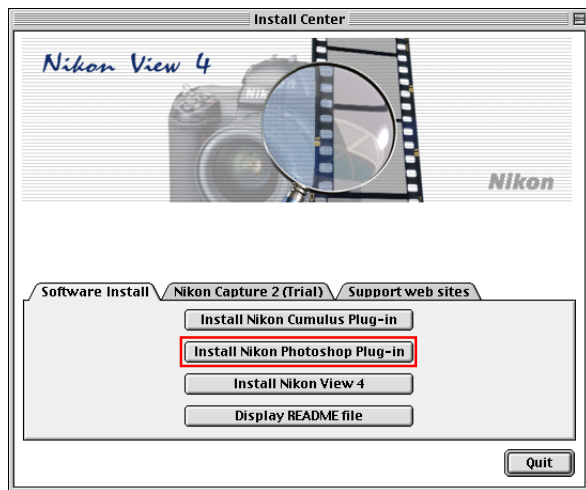
[Click here](#)  to proceed to the next step.

Step 3—Install Nikon NEF Plug-ins

If you plan to view NEF (RAW data) or YCbCr-TIFF images using Photoshop 5.0 or later, you will also need to install the Nikon NEF and YCbCr-TIFF plug-ins.

3-1: Start the installer for the Nikon NEF Plugin

Click **Install Nikon Photoshop Plug-in** in the Software Install tab of the Welcome window to begin installation of the Nikon NEF and YCbCr-TIFF plug-ins. If you will not be using Photoshop 5.0 or later, proceed to [Step 3-5](#).

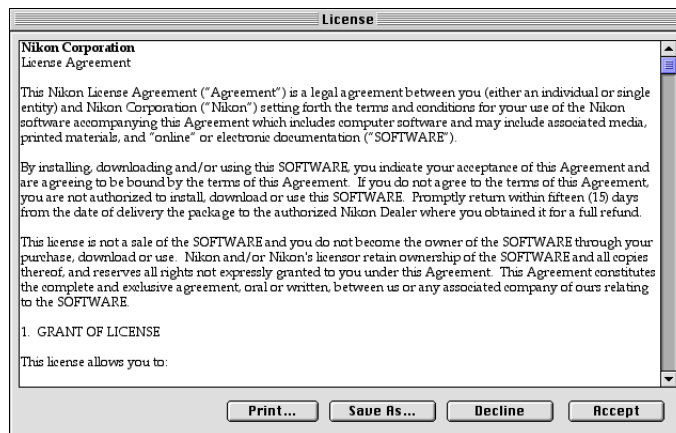


If Photoshop 5.0 or Later Is Not Installed

If you attempt to install the Photoshop plug-in when Photoshop 5.0 or later is not installed, the plug-ins will be installed into the same folder as Nikon View. Install the plug-ins after having installed Photoshop version 5.0 or later.

3-2: Accept the license agreement

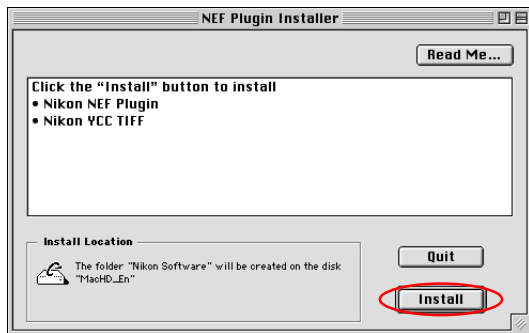
The license agreement is displayed at the start of installation. After reading the agreement, click **Accept** to display the ReadMe file. Take a few moments to view this file, which may contain important information that could not be included in this manual.



[Click here](#)  to proceed to the next step.

3-3: Start installation

To install the Nikon NEF and YCbCr-TIFF plug-ins, click the **Install** button in the installer dialog.



The Nikon NEF Plugin

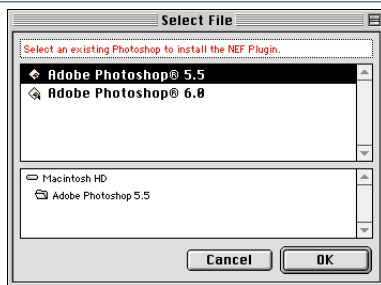
The Nikon NEF plugin is required when using Photoshop 5.0 or later to open NEF (RAW data) images taken with a Nikon digital camera.

The YCC TIFF Plugin

The YCC TIFF plug-in is required when using Photoshop 5.0 or later to open YCbCr-TIFF images taken with a Nikon digital camera. Note that the YCC TIFF plug-in can not be used with Photoshop 5.0 LE.

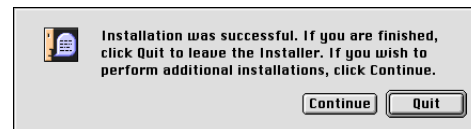
Multiple Copies of Photoshop 5.0 or Later

If more than one copy of Photoshop (version 5.0 or later) is installed on your Macintosh, you will be prompted to select the copy of Photoshop for which the plug-ins will be installed.



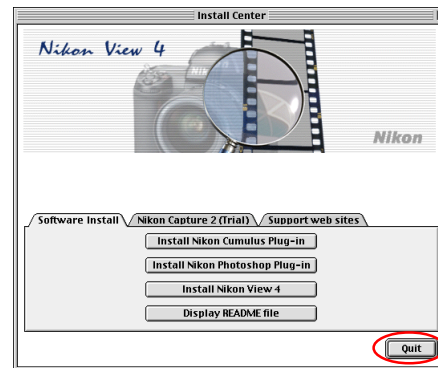
3-4: Quit the installer

When installation is complete, the dialog shown below will be displayed. Click **Quit** to quit the installer.



3-5: Close the Welcome window

Click the **Quit** button to close the Welcome window.



Click [here](#)  to return to the Nikon View 4 Reference Manual.