

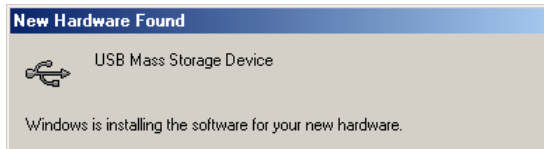
# Registering the COOLPIX5000/995/885/775 under Windows Millennium Edition (Me)

## Installing Windows Hardware Drivers for the COOLPIX5000/995/885/775

The following explanation uses the COOLPIX995 as an example. Registration for the COOLPIX5000, COOLPIX885 and the COOLPIX775 follows exactly the same procedure. The dialog boxes may however show slight differences.

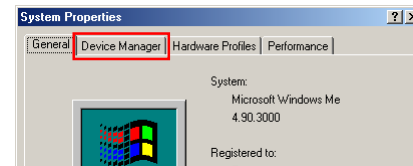
### Step 1

Install Nikon View 4 and restart your computer. Once Windows has restarted, turn on the camera and connect it to the computer using a USB cable. The new hardware will be detected automatically and the necessary drivers installed.



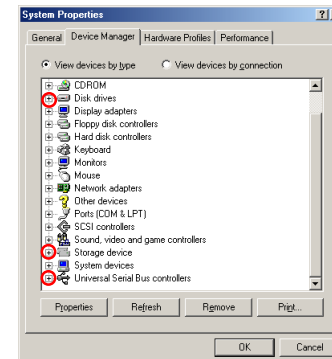
### Step 2

Once registration is complete, check that the camera has been correctly registered with the system. Click the My Computer icon on the desktop with the right mouse button and select Properties from the menu that appears. The System Properties dialog will be displayed; click the Device Manager tab.



### Step 3

The Device Manager sheet will be displayed. After confirming that “Disk drives,” “Universal Serial Bus controllers,” and “Storage device” are listed in the Device Manager, click the “+” sign next to each of these device types.

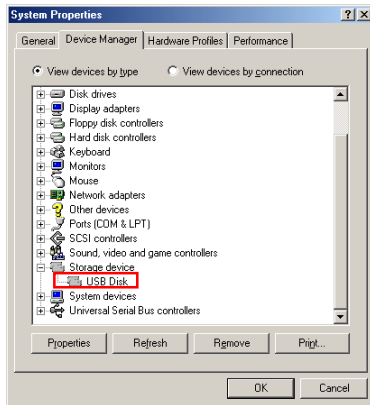
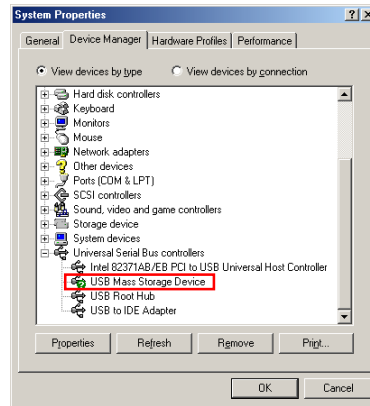
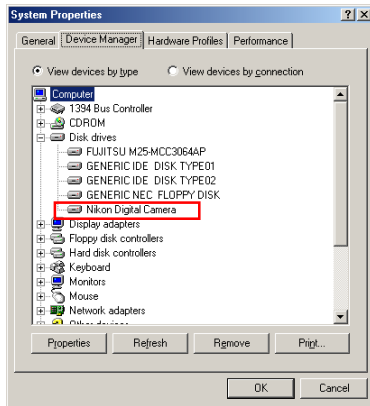


[Click here](#)  to proceed to the next step.

## Step 4

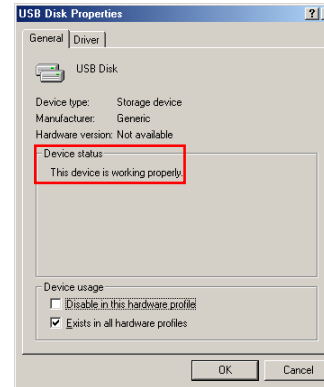
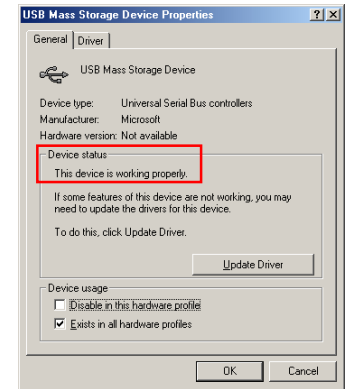
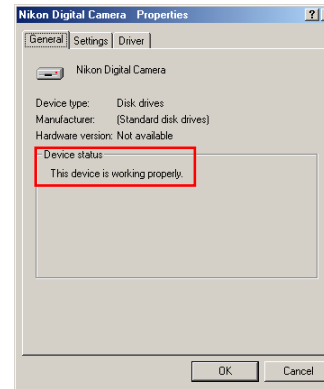
After confirming that “Nikon Digital Camera,” “USB Mass Storage Device,” and “USB Disk” are listed respectively under “Disk drives,” “Universal Serial Bus controllers,” and “Storage device,” double click each of these listings to open the associated Properties window.

If instead the listing “NIKON DSC E995” appears under “Other Devices,” remove the listing and turn the camera off and then on again. The required device drivers will be installed automatically.



## Step 5

Click the General tab for each device and confirm that “This device is working properly” appears under “Device status.” Click **OK**.



Click **OK** to close the System Properties window. Device registration is now complete.

Click [here](#)  to return to the Nikon View 4 Reference Manual.