

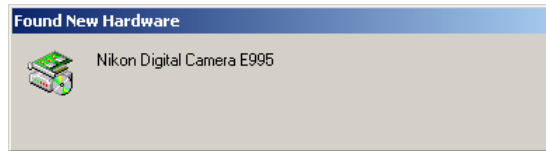
Registering the COOLPIX5000/995/885/775 under Windows 2000 Professional

Installing Windows Hardware Drivers for the COOLPIX5000/995/885/775

The following explanation uses COOLPIX995 as an example. Registration for the COOLPIX5000, COOLPIX885 and the COOLPIX775 follows exactly the same procedure. The dialog boxes may however show slight differences.

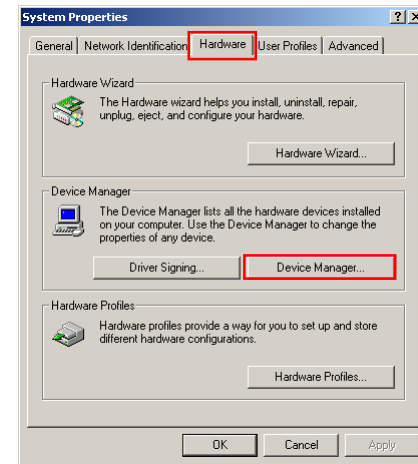
Step 1

Install Nikon View 4 and restart your computer. Once Windows has restarted, turn on the camera and connect it to the computer using a USB cable. The new hardware will be detected automatically and the necessary drivers installed.



Step 2

Once registration is complete, check that the camera has been correctly registered with the system. Click the My Computer icon on the desktop with the right mouse button and select Properties from the menu that appears to display the System Properties dialog. Open the Hardware tab and click the **Device Manager...** button in the Device Manager section.



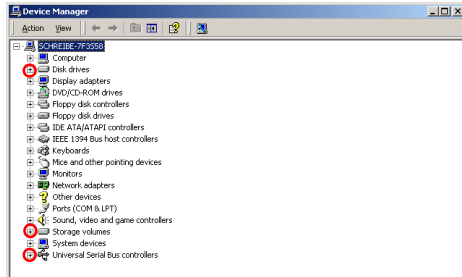
Log On

You will need to log on as “Administrator” to register the COOLPIX5000/995/885/775.

Click [here](#)  to proceed to the next step.

Step 3

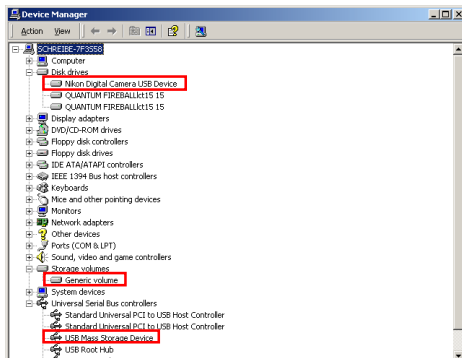
The Device Manager will be displayed. After confirming that “Universal Serial Bus controllers,” “Disk drives,” and “Storage volumes” are listed in the Device Manager, click the “+” sign next to each of these device types.



Step 4

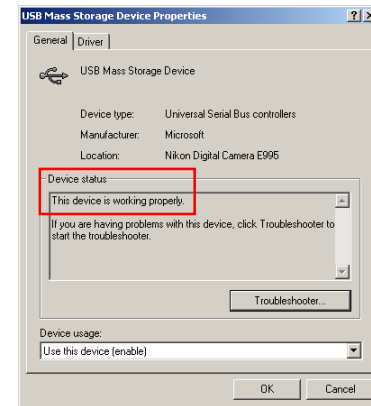
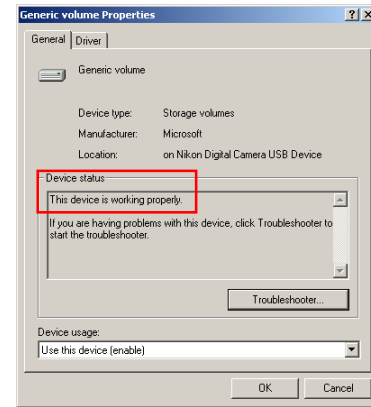
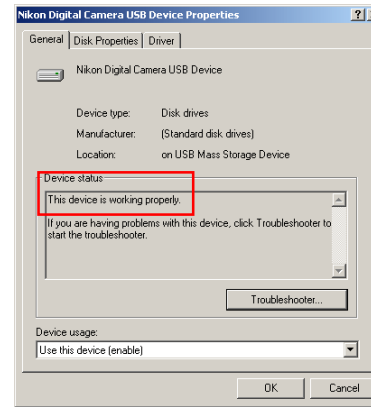
After confirming that “USB Mass Storage Device,” “Nikon Digital Camera USB Device,” and “Generic volume” are listed respectively under “Universal Serial Bus controllers,” “Disk drives,” and “Storage volumes,” double click each of these listings to open the associated Properties window.

If instead the listing “NIKON DSC E995” appears under “Other Devices,” remove the listing and turn the camera off and then on again. The required device drivers will be installed automatically.



Step 5

Click the General tab for each device and confirm that “This device is working properly” appears under “Device status”. Click **OK**.



Close the Device Manager, then click **OK** to close the System Properties window. Device registration is now complete.

Click [here](#)  to return to
“Connecting the COOLPIX885/775 to a Computer”.