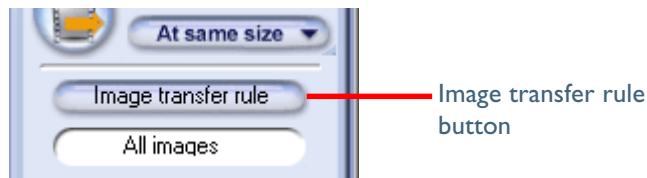


Transferring Images to the Computer at Default Settings

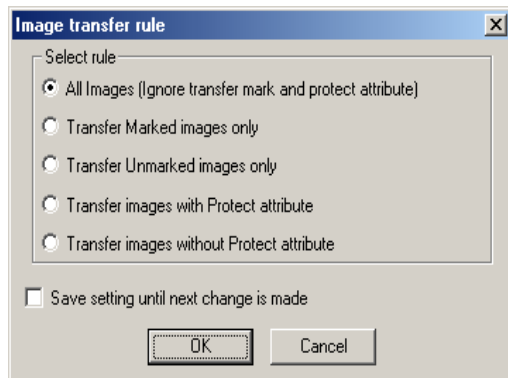
This section describes how to use the Image Transfer window to transfer images to your computer at NikonView 4's default settings. Images can be transferred from a memory card inserted in a camera, card reader, or card slot.

Step 1—Choose the images to be transferred

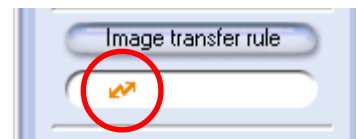
In this step, you will choose the images to be transferred. If you do not select a specific type of image for transfer, all images on the memory card will be transferred to the computer (default setting). If you want to specify a particular type of image for transfer, click the **Image transfer rule** button in the Transfer Image window. This allows you to select only a specific type of image, for example protected images, for transfer.







When the **Image transfer rule** button is clicked, the dialog shown below will be displayed, where you can select the type of image to be transferred.



After selecting an image type, click **OK** to return to the Transfer Image window. The selected image type will be indicated by an icon in the text box below the **Image transfer rule** button.



The following transfer settings are available:

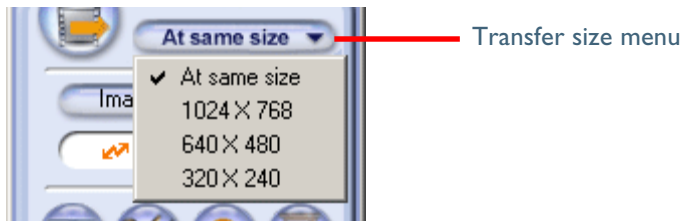
Selection	Description	Icon
All Images (Ignore transfer mark and protect attribute)	All images will be transferred. This is default setting at installation.	All images
Transfer Marked images only	Only marked images will be transferred.	
Transfer Unmarked images only	Only unmarked images will be transferred.	
Transfer images with Protect attribute	Only protected images will be transferred.	
Transfer images without Protect attribute	Only unprotected images will be transferred.	

Transfer Marked Images

COOLPIX5000/995/885/775 allows you to mark images intended for transfer, although some cameras do not support this operation. Consult the documentation provided with your camera.

Step 2—Choose an image size

Choose a size suited to the task at hand from the **Transfer size** menu.



If you choose **At same size**, image size will not change during transfer. At other settings, all images larger than the selected size will be converted to the new size during transfer. Images smaller than the selected size are transferred at their original size. All photo information apart from the “image size” field will be unaffected by the conversion. Converted images are saved using JPEG compression at a ratio equivalent to a camera setting of NORMAL.

The following options are available.

Option	Description
At same size	Images will be saved at their original dimensions.
1024 × 768 (Pixels)	Images will be converted to XGA (suitable for display on most computer monitors).
640 × 480 (Pixels)	Images will be converted to VGA (suitable for Web distribution).
320 × 240 (Pixels)	Images will be converted to QVGA size (suitable for distribution by e-mail).

Aspect Ratio

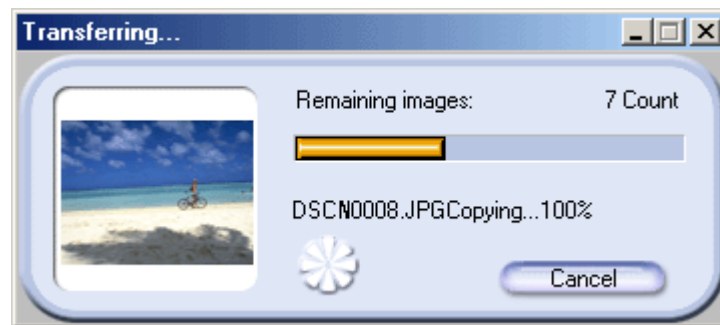
If the original image does not have an aspect ratio of 4 : 3 (note that photographs taken with the D1, D1x, D1H or COOLPIX5000/995/990 have an aspect ratio of 3 : 2), the vertical dimension will be adjusted to match the horizontal dimension without changing the original aspect ratio.

Step 3—Transfer the images

To transfer images of the selected type, click the “Transfer” button.



A progress indicator will be displayed while the images are being transferred. A thumbnail preview of the image currently being transferred will also be displayed. When multiple images are transferred, the Transferring... window will include a progress meter showing the number of images copied to disk and the number of images remaining.



Other operations within Nikon View 4 can not be performed while the Transferring... window is being displayed.


Transferring Images

The original image remains on the memory card when images are transferred to a computer.

Destination Folder

This section describes the saving procedure for images that have been transferred to the computer according to the steps described on the previous pages. When images are transferred to the computer a sub-folder will be created in the Images folder, which is found inside the Nikon View 4 folder. The sub-folder will be named according to the date and time that the images were transferred to the computer (YYYYMMDD-HHMMSS). For example, if Nikon View 4 is installed under Windows in the folder C:\ProgramFiles\Nikon\NKview4 (the default folder), and images were transferred to the computer at 22 hours 33 minutes and 44 seconds on February 2nd 2002, then the destination folder for the images will be named as follows:

C:\Program Files\Nikon\NKView4\Images\20020202-223344

The destination folder can be changed using the Transfer tab of the Preferences dialog.  35



Pg. For more information on:



35 Preferences: Transfer tab

Click [here](#)  to return to the Nikon View 4 Reference Manual.