

# Silicon Graphics 1600SW™ Flat Panel Monitor

Owner's Guide

Document Number 007-3869-001

---

## **CONTRIBUTORS**

Written by Judy Muchowski and Kameran Kashani

Illustrated by Kwong Liew and Kameran Kashani

Engineering contributions by Dan Evanicky, Lisa Feldman, Lori Gager, David Hanttula, Ken Klingman, Oscar Medina, Jonathan Mendelson, Alice Meng, Steve Proffitt, Larry Roberts, I-Ching Wang, Michael Wright.

---

## **©1998, Silicon Graphics, Inc.— All Rights Reserved**

The contents of this document may not be copied or duplicated in any form, in whole or in part, without the prior written permission of Silicon Graphics, Inc.

## **RESTRICTED RIGHTS LEGEND**

Use, duplication, or disclosure of the technical data contained in this document by the Government is subject to restrictions as set forth in subdivision (c) (1) (ii) of the Rights in Technical Data and Computer Software clause at DFARS 52.227-7013 and/or in similar or successor clauses in the FAR, or in the DOD or NASA FAR Supplement. Unpublished rights reserved under the Copyright Laws of the United States. Contractor/manufacturer is Silicon Graphics, Inc., 2011 N. Shoreline Blvd., Mountain View, CA 94043-1389.

Silicon Graphics is a registered trademark and Silicon Graphics 1600SW is a trademark of Silicon Graphics Inc. Post-it is a registered trademark of 3M.

# Contents

<b>Introduction</b> .....	v
<b>1. Setting Up and Using the Flat Panel Monitor</b> .....	1
Using the Flat Panel Monitor With a Standard CRT .....	1
Unpacking the Flat Panel Monitor .....	2
About the Flat Panel Monitor .....	3
Connecting the Cables .....	4
Turning On the Flat Panel Monitor .....	5
Adjusting the Viewing Position .....	6
Turning Off the Flat Panel Monitor .....	7
Removing the Flat Panel Monitor From Its Base and Replacing It .....	8
Replacing the Flat Panel Monitor On Its Base .....	9
Using a Screen Saver .....	9
Adjusting the Brightness .....	10
Adjusting the White Balance (White Point) .....	10
Recommended Use and Viewing Angles .....	10

<b>2.</b>	<b>Troubleshooting</b> .....	13
	LED States .....	13
	Troubleshooting Tips.....	14
	No Image on the Flat Panel Monitor .....	15
	Image Appears Too Light or Too Dark .....	16
	Image Is Dim When Monitor Is First Turned On .....	16
	Bright Dots on the Monitor .....	16
	Diagnostic Tests for the Flat Panel Monitor .....	17
	Warranty Service.....	17
	Returning the Flat Panel Monitor.....	17
<b>3.</b>	<b>Maintenance, Technical Specifications and Regulatory Information</b> .....	19
	Cleaning and General Care of the Flat Panel Monitor .....	19
	Technical Specifications .....	20
	Manufacturer’s Regulatory Declarations .....	23
	Shielded Cables .....	23
	Electrostatic Discharge .....	24
<b>A.</b>	<b>Statements of Compliance</b> .....	25
	FCC Class B Conformance.....	25
	Electromagnetic Emissions.....	26
	ENERGY STAR.....	27
	TCO ‘95 Guidelines.....	27
	Industry Canada Notice (Canada Only) .....	27
	CE Notice .....	27
	VCCI Notice (Japan Only).....	28
	Korean Regulatory Notice.....	28
	NOM 024 Information (Mexico Only) .....	29
	EN 55022 Compliance (Czech Republic Only) .....	29
	Polish Notice (Poland Only) .....	30

## Introduction

Congratulations and welcome to the world of precise color. You have purchased a professional-quality, digitally driven, flat panel monitor. This flat panel monitor supports true color (24-bit) with a screen resolution of 1600 x 1024 pixels.

Because of its high resolution, this monitor must be connected to a graphics adapter card or system that supports the OpenLDI digital flat panel interface. You cannot plug this monitor into a typical analog VGA connector.

This guide contains instructions that are specific to the flat panel monitor. It assumes that the adapter board that drives the monitor has been installed in your computer. Information related to your computer, adapter board, and other peripherals is located in the documents that ship with them.

- Chapter 1, "Setting Up and Using the Flat Panel Monitor," explains how to unpack, set up, and adjust the flat panel monitor.
- Chapter 2, "Troubleshooting," contains troubleshooting and product support information.
- Chapter 3, "Maintenance, Technical Specifications and Regulatory Information," tells you how to take care of the flat panel monitor. It also contains technical specifications and regulatory information.
- Appendix A, "Statements of Compliance," describes the regulatory rules with which the flat panel monitor complies.



## *Chapter 1*

# **Setting Up and Using the Flat Panel Monitor**

This chapter explains how to unpack the flat panel monitor and set it up with your computer.

The flat panel monitor is driven by an adapter board that is installed in your computer. In some cases, the adapter board and software are installed at the factory before shipment; in other cases, you need to install them yourself.

- If the flat panel adapter board and software have already been installed, continue with these instructions.
- If you are installing the adapter board and software, install them now, using the instructions and CD that come with the adapter board. Be sure to read any documentation or release notes on the CD for instructions specific to your computer. Then return to this manual.

In addition, see your computer's documentation (in most cases, an owner's guide) for any information specific to your computer.

---

---

## **Using the Flat Panel Monitor With a Standard CRT**

If you plan to use the flat panel monitor along with a standard cathode-ray tube (CRT) monitor, be aware of the following:

- The flat panel monitor was not designed to be used simultaneously with a conventional cathode-ray tube (CRT) monitor when both monitors are attached to the same graphics adapter board. If you are operating your flat panel monitor from

a PCI or AGP board and have a CRT monitor connected to your system, you may need to use your system's setup utility to select a primary (default) monitor.

- If your system can use separate, dual PCI or AGP cards, then you may be able to use the flat panel monitor and a CRT monitor at the same time. See your system's owner's guide and any documentation provided with the adapter board for more information.

---

---

## Unpacking the Flat Panel Monitor

To unpack and set up the flat panel monitor, follow these steps. (Unpacking instructions are also printed on the shipping box.) Save the original shipping materials in case you need to return the monitor for service.

1. Open the box, remove the top carton and AC power card, and set both aside.
2. Using the lifting strap that is packed around the monitor, carefully lift the monitor, its base, and some protective foam pieces from the box. Place this assembly on a flat surface.
3. Remove the top foam support, then lift the monitor from the bottom foam piece and remove the plastic bag.
4. Remove the protective film from the screen by peeling it away slowly from one corner, keeping the peeled off portion as close to the monitor's surface as possible. Be careful not to get fingerprints on the exposed coated glass surface. Keep this protective film in case you need to return the monitor for service.

**Caution:** The screen is made of glass coated with optical films and is the most expensive component in the monitor. A blow from a sharp instrument such as a pen can scratch the surface or break the glass.



5. Remove the box containing the AC adapter from the foam packing, and remove the AC adapter from the box.
  - Also note the 3 mm hex wrench included with the shipment. Use this tool if you wish to remove the monitor from its pedestal, for example to place the monitor on a mounting arm or wall mount.

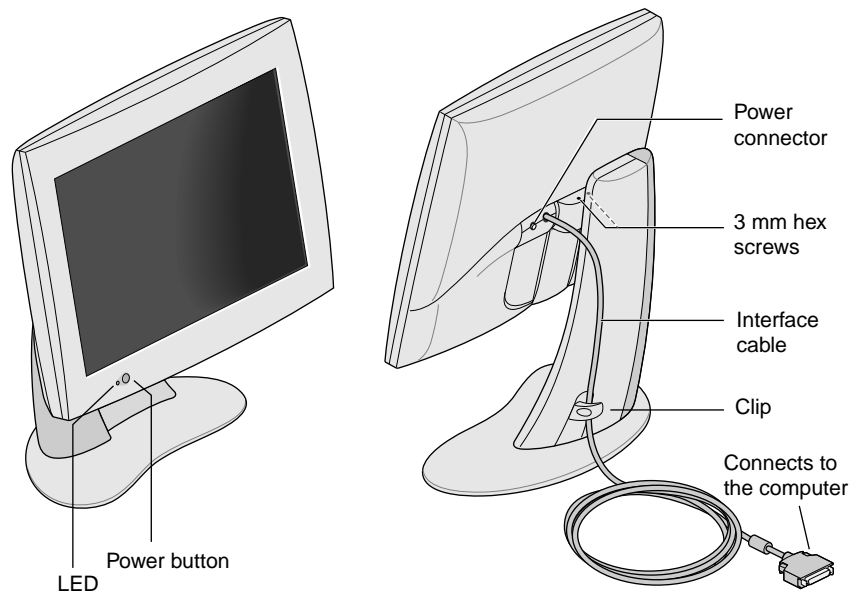
You are finished unpacking the flat panel monitor. The next sections describe the flat panel monitor and how to set it up.

---

---

## About the Flat Panel Monitor

You may want to take a moment to familiarize yourself with the monitor's features, as shown in Figure 1-1.



**Figure 1-1** Front and Rear Views of the Flat Panel Monitor.

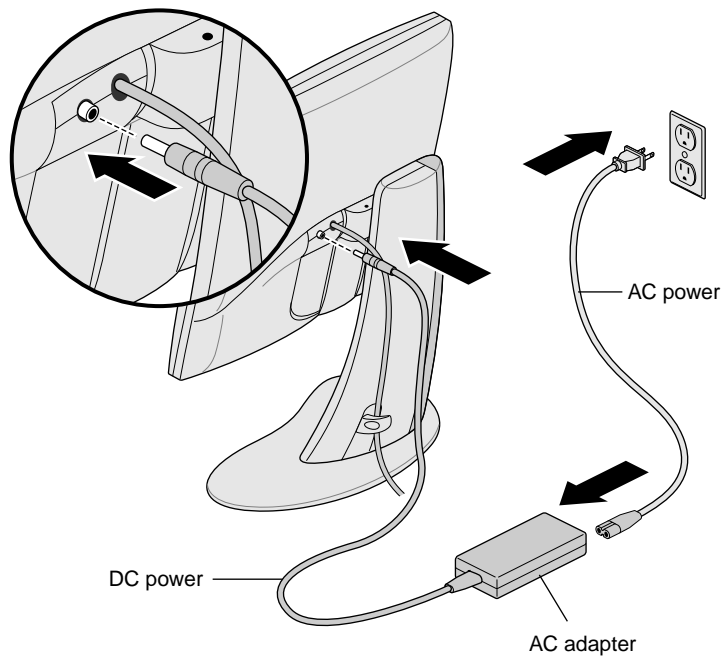
---

---

## Connecting the Cables

In order for your computer to recognize the flat panel monitor, you should **connect the monitor first, before turning on your computer**. Follow these steps to connect the cables:

1. Turn off your computer.
2. Attach the flat panel monitor's interface cable, indicated in Figure 1-1, to the appropriate connector on your computer. (See your computer's documentation.)
3. Tuck the interface cable behind the clip on the base of the monitor, as shown in Figure 1-1.
4. Connect the power cables as follows:
  - Connect the DC power cable from the AC adapter to the DC input power connector on the back of the flat panel monitor, as shown in Figure 1-2.



**Figure 1-2** Connecting the Power Cable and AC Adapter

- Tuck the power cable behind the clip on the rear of the stand.
- Connect one end of the AC power cord to the AC adapter, and the other end of the AC power cord to a grounded electrical wall outlet or power strip. (The illustration shows the AC adapter and cord for the U.S.A. The power cord for your country may look different.)

**Note:** The AC adapter is auto-ranging, which means that it automatically adjusts for different AC voltages from almost any power source (50-60 Hz, 110-220 VAC) without using an additional transformer.

---

---

## Turning On the Flat Panel Monitor

To turn on the monitor, press the power button on the front. See Figure 1-1 for the location of the power button. Once the system supplies signals to the flat panel monitor, the LED on the bottom left turns green.

If the flat panel monitor does not light up, and if the LED is blinking yellow, check that its interface cable is firmly attached to the correct connector on the computer.

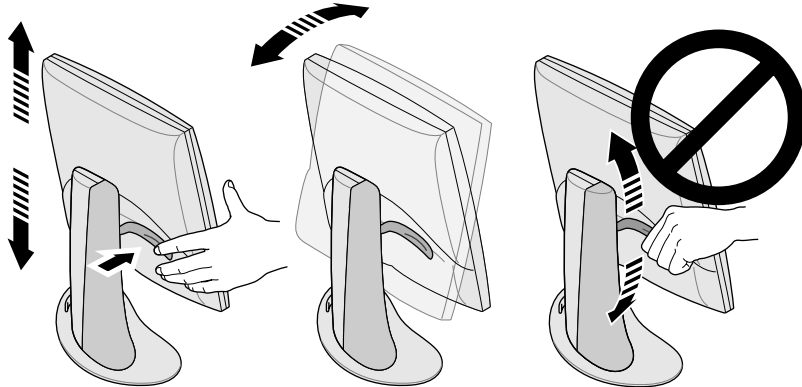
For additional troubleshooting information, go to Chapter 2, "Troubleshooting."

---

---

## Adjusting the Viewing Position

You can adjust the flat panel monitor to a height and tilt that is comfortable for you. You can raise or lower the monitor a maximum of 3.75 inches (95 mm).



**Figure 1-3** Adjusting the Height and Tilt

To raise the monitor:

1. Hold the monitor along the bottom or right edge with your right hand.
2. Grip the left side of the monitor with your left hand and pull the lever behind the monitor toward you, while raising the monitor to the desired height.

To lower the monitor:

1. Pull the lever behind the monitor toward you with your left hand and immediately release the lever.
  - Each time you pull the lever, the monitor lowers one step. There are 10 steps total and each step is about 3/8 inch (9.5mm) lower than the previous one. Repeat this step until you find the desired height, or hold the lever in the depressed position until it reaches the height you want.

To adjust the tilt, hold the monitor on both sides and tilt it forward or back until you find the best viewing angle.

If you want more desktop space or more versatility in viewing positions, you may want to purchase a mobile arm or wall mounting bracket. The flat panel monitor has a standard Video Electronics Standards Association (VESA) mounting on the rear. Mobile arms are available in many computer stores.

---

---

## **Turning Off the Flat Panel Monitor**

To turn off the monitor, press the power button on the front. See Figure 1-1. It is recommended that you turn your monitor off whenever you are going to be away for more than a few hours; doing so can dramatically increase the life span of the lamps in the backlight of the flat panel monitor.

Also, if your computer has screen-saver and power-saving functions, make sure they are enabled. As with a CRT, the screen saver prevents an image from being burned into the screen. Using a power-saving function helps prolong the life of the backlight lamps inside the flat panel monitor.

In power-saving mode, the LED on the monitor is solid yellow. To restore power, move the mouse or press a key on the keyboard. Refer also to the documentation that came with your computer's flat panel adapter board for instructions specific to your computer.

---

---

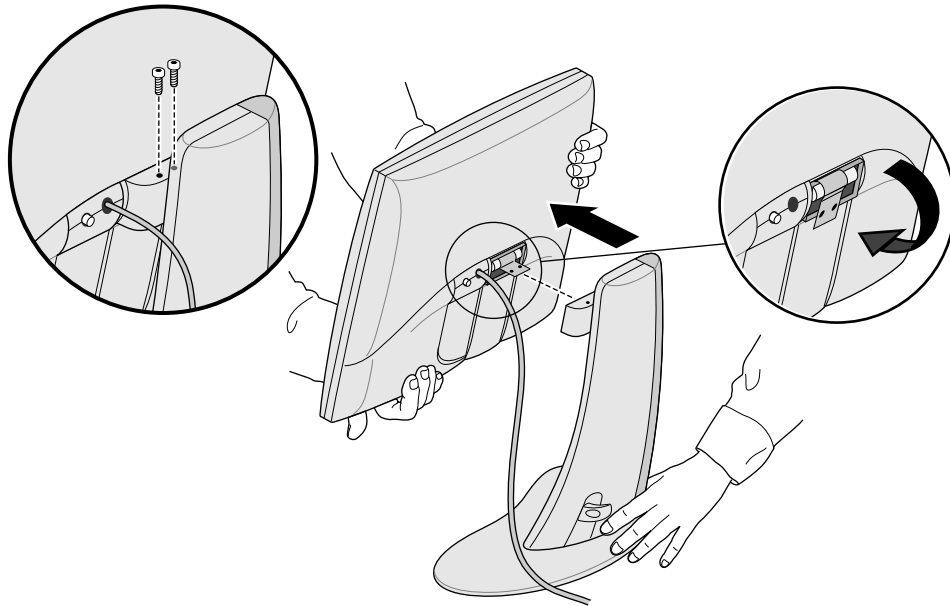
## Removing the Flat Panel Monitor From Its Base and Replacing It

In typical operation, the flat panel monitor should remain attached to its pedestal. However, if you need to remove the monitor from its pedestal, follow the instructions in this section.

You may find this task easier to accomplish if a second person helps you. The steps below describe how to remove the monitor from its base.

1. Locate the 3 mm hex wrench included with your flat panel monitor.
2. Raise the monitor to its highest position. This makes it easier to remove the screws. See Figure 1-3.
3. Tilt the monitor forward for easier access to the two screws.

**Note:** Once you've removed the two screws, make sure that you or someone else is holding the monitor.



**Figure 1-4** Removing the Monitor From Its Base

4. Holding the monitor as pictured in Figure 1-4, use the 3 mm hex wrench to loosen and remove the two hex screws that secure the monitor to its base. Save the screws in case you need to replace the monitor on its stand.
5. Pull the monitor toward you. You may need someone else to support the base as you do this.
6. Optionally, fold down the metal tab at the rear of the flat panel, as shown in Figure 1-4. You may need to use pliers.

---

### Replacing the Flat Panel Monitor On Its Base

Replacing the flat panel monitor on its base is the reverse procedure of removing it:

1. If the metal mounting tab has been folded down, flip it back up. You may need to use pliers.
2. With the base and the front of the monitor facing you, grasp the monitor with both hands, and guide the hinge into the opening for it on the base.

**Note:** Do not leave the monitor unsupported before inserting the screws.

3. Supporting the monitor with one hand, insert and tighten the two screws that you removed when the monitor was first removed from its base.

To tighten the screws, use either the wrench originally supplied with the monitor or any 3 mm hex wrench.

---

---

### Using a Screen Saver

If your computer has a screen saver program, make sure it is enabled. As with a CRT monitor, leaving an image up without a screen saver for a long time may burn the image into the monitor.

---

---

## Adjusting the Brightness

Brightness is adjusted by a software control panel. The way this feature works differs between computers and adapter boards. See the documentation that comes with the flat panel monitor's adapter board or your computer's owner's guide for information on adjusting the brightness.

---

---

## Adjusting the White Balance (White Point)

Your flat panel monitor has a separate and unique system to set the white point of your screen. As with the brightness adjustment, the white point is adjusted through a software control panel, and the way this feature works differs between computers and adapter boards. See the documentation that comes with the flat panel monitor's adapter board or your computer's owner's guide for information on setting the white point.

Specifications for the adjustable white balance range are in "Technical Specifications" on page 20.

---

---

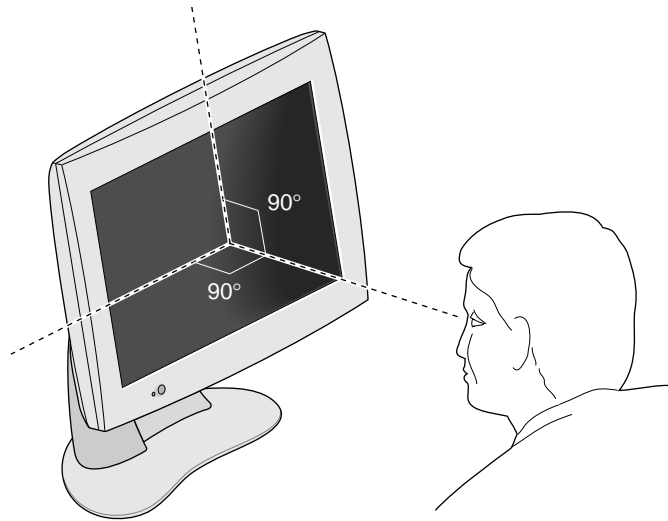
## Recommended Use and Viewing Angles

Follow these recommendations to use your flat panel monitor:

- Allow the flat panel monitor to warm up for at least a minute.
- Always have your computer's screen saver enabled to prevent images from burning into the monitor.
- Turn the monitor off when you will be away from it for more than a few hours. This will dramatically lengthen the life span of the monitor's backlight lamps.
- If your computer has a power-saving feature, enable it to help lengthen the life span of the monitor's backlight lamps.



- For best color viewing, the monitor should be between 18 inches (46 cm) and 28 inches (71 cm) away from your eyes.
- Adjust the monitor height so that the center of the screen is at or slightly below eye level. For the brightest image and most accurate color, view the screen as close as possible to perpendicular (a 90° angle). See Figure 1-5. (Refer to Table 3-1 for the viewing angle limits.)



**Figure 1-5** Optimum Viewing Angle for the Flat Panel Monitor

- Although the monitor screen has a special anti-glare coating, you should place the monitor at a 90° angle to light sources, including windows, to minimize glare and reflections. Adjust the monitor tilt to minimize reflections.
- Keep the monitor screen clean. See “Cleaning and General Care of the Flat Panel Monitor” on page 19.



## Chapter 2

# Troubleshooting

This chapter contains information on solving problems that you may encounter when using the flat panel monitor. For further troubleshooting information, see the manual that came with the flat panel monitor's adapter board for your computer.

---

---

### LED States

The LED on the left bottom side of the flat panel monitor indicates the state of the monitor. Table 2-1 explains the LED states and offers possible solutions if a problem occurs.

**Table 2-1** Explanation of LED States

LED	State	Monitor State	Possible Causes and Solutions
No LED	0	Screen is off.	Power button is not depressed. Power cable is not connected. Interface cable is not connected to the computer.

**Table 2-1 (continued)** Explanation of LED States

LED	State	Monitor State	Possible Causes and Solutions
Blinking yellow	1	Screen is off.	Software is not configured correctly. See the manual that comes with the monitor's adapter board for your computer. Another cause might be a loose or disconnected interface cable. Also, the adapter board (in systems so equipped) may be loose or otherwise not installed properly.
Solid green	2	Screen and backlighting are on.	The flat panel is operating normally.
Solid yellow	3	System Power Save is on and screen is off.	System Power Save mode has turned off the screen because there has been no keyboard or mouse action for a while. Move the mouse or touch the keyboard to enable the monitor.

---

---

## Troubleshooting Tips

Subsequent sections offer more detailed troubleshooting information. In addition, check any documents that come with your monitor's adapter board.

If the problem persists after following the suggestions below, call your service provider.

---

## No Image on the Flat Panel Monitor

1. Check to see if the flat panel monitor and computer are turned on. (Press the power button on the front of the monitor.) The flat panel monitor takes about a minute to warm up to full brightness.
2. Check the color of the LED on the front of the flat panel monitor and look for a possible cause in Table 2-1.
3. Make sure that the DC power cable is connected securely to the flat panel monitor.
4. Check that the correct AC power cable for your country (110 V or 220 V) is connected securely to the AC adapter and to a working wall outlet or power strip. (See “Connecting the Cables” on page 4.)
5. Check that the interface cable is connected securely to the flat panel monitor’s adapter’s connector on the computer. (See “Connecting the Cables” on page 4.)
6. If you recently installed the flat panel monitor’s adapter board in your computer, the board may not be installed correctly, or the software may not be installed. Follow the instructions in the installation manual that came with the board to make sure you have installed the hardware and software correctly. Also, you may wish to re-seat the adapter board in the computer to make sure that the board is making proper electrical contact.
7. If the flat panel monitor was not connected to the computer via the interface cable when the computer was turned on, reboot the computer so that the correct timing table is used for the flat panel monitor.

---

### **Image Appears Too Light or Too Dark**

The images on flat panel monitors look lighter or darker when viewed from different angles (especially from highly oblique angles). Check that your line of sight is as close to perpendicular as possible. See “Recommended Use and Viewing Angles” on page 10 and Table 3-1.

Considerable development has been done to ensure that your flat panel monitor has the widest possible viewing angles without compromising such features as displaying fast-moving video. For more technical information, see “Technical Specifications” on page 20.

---

### **Image Is Dim When Monitor Is First Turned On**

It takes about one minute for flat panel monitors to warm up to full brightness from a cold start, so at first the image may appear dim or faded. This is because the ambient air temperature affects the start-up brightness of the flat panel monitor. For example, when the air temperature is about 77°F (25°C), the panel is initially at about 80% of its maximum brightness. However, at 50°F (10°C), the light output can start out as little as 30% of its maximum.

Eventually, though, as the backlight lamps warm up, the monitor should reach its maximum brightness, as long as it is being operated within the proper temperature range. See Table 3-4 for the operating temperature range.

---

### **Bright Dots on the Monitor**

Occasionally you may notice some bright dots on the monitor that remain in the same place regardless of the image being displayed on the screen. This is intrinsic to thin-film transistor (TFT) liquid crystal displays (LCDs) and does not indicate a defective screen.

---

## Diagnostic Tests for the Flat Panel Monitor

If your computer has diagnostic tests, they will be explained in the documentation that came with your computer's flat panel adapter board.

---

---

## Warranty Service

Your flat panel monitor is covered by a three-year warranty. To ensure full coverage under your monitor's warranty, be sure to submit your registration card within 30 days of receiving the monitor. Warranty service may not be provided by the vendor of your host system. Contact the vendor you purchased your flat panel from for information and service.

---

---

## Returning the Flat Panel Monitor

If your service provider instructs you to return the flat panel monitor, follow the instructions below.

**Note:** If you are instructed to return the adapter board for your flat panel monitor, check in the documentation that came with the adapter board for removal and return instructions.

1. Turn off your computer. Disconnect the power cable from the rear of the flat panel monitor.
2. Disconnect the interface cable from the computer.
3. Replace the original protective plastic film over the monitor's screen. Be sure the plastic film is clean and free of grit that may damage the monitor's screen.

4. If your service provider instructs you to do so, remove the flat panel monitor from its base. See “Removing the Flat Panel Monitor From Its Base and Replacing It” on page 8.
5. If you receive a replacement flat panel monitor, use that shipping carton and packing materials to return the faulty monitor, or use the flat panel monitor’s original shipping carton and packing materials.



## Chapter 3

# Maintenance, Technical Specifications and Regulatory Information

This chapter contains information on how to take care of your flat panel monitor, technical specifications, and regulatory information.

---

---

## Cleaning and General Care of the Flat Panel Monitor

Handle your flat panel monitor with care. A sharp instrument such as a pen can scratch the monitor's surface and felt-tip pens can leave permanent stains. **Do not place objects** on the glass surface, **especially suction devices** (although Post-it notes are OK).

From time to time dust builds up on the surface of the monitor, and you need to clean it to get the best possible image. Follow the steps below to clean the monitor.

**Caution:** Only use a soft cloth, either dry or moistened with water. Using other substances, abrasive cleaners, cleaning pads, alcohol, or ammonia to clean the monitor will scratch or damage the monitor's surface. Also, do not spray directly on the coated glass surface, because the liquid may drip inside the unit and damage the components.

1. Dampen a soft cloth with water just enough so it won't streak.
2. Wipe the glass surface of the monitor gently with the cloth.

---

---

## Technical Specifications

This section lists various technical specifications for your flat panel monitor. You can find additional technical information at the following World Wide Web site:

<http://www.sgi.com/go/flatpanel>

Table 3-1 below lists the electro-optical specifications of the flat panel monitor.

**Table 3-1** Electro-Optical Specifications for the Silicon Graphics 1600SW Flat Panel Monitor

Specification	Value
Brightness	170 Cd/m <sup>2</sup> min., > 235 Cd/m <sup>2</sup> max.
Color resolution	16.7 million true colors
Contrast ratio	350:1 typical
Display area	15.6 inches (H) x 9.3 inches (V) (396.6 mm (H) x 236.5 mm (V)) 17.3 inch (44 cm) diagonal
Dimming range	35% to 100%
Monitor Surface	Front: Anti-glare 3H hardcoat
Pixel pitch	0.077 x 3 mm (H) x 0.231 mm (V)
Pixel resolution	1600 H x RGB x 1024 V (4,915,200 sub-pixels)
Response time	40 ms typical combined rise and fall
Viewing angle	Horizontal: ±60° Vertical: +45°/-55°
White balance range	5000° K to 7000° K, adjustable through software on the host computer

Table 3-2 lists the power requirements and specifications of the flat panel monitor.

**Table 3-2** Power Specifications for the Silicon Graphics 1600SW Flat Panel Monitor

Specification	Value
Input	110/220 VAC, 50/60 Hz Auto-ranging power supply (AC adapter)
Output	12 VDC at 3A maximum
Power consumption	
Normal	30 watts
Dimmed	20.4 watts
Sleep mode	2.5 watts (backlight and LCD off)

Table 3-3 describes the cables used with the flat panel monitor.

**Table 3-3** Cables Used With the Silicon Graphics 1600SW Flat Panel Monitor

Cable	Specification
Monitor	9 foot (2.75 m), shielded, 16-twisted pairs conductors, internal connector at monitor end
Power	
AC cable	IEC socket with removable 5-foot (1.5 m) cable to wall outlet
DC cable	Integral to the AC adapter on most models, 6.5 feet (2 m) long

Table 3-4 lists the flat panel monitor's physical and environmental specifications.

**Table 3-4** Physical and Environmental Specifications for the Silicon Graphics 1600SW Flat Panel Monitor

Specification	Value
Monitor size	12.6 in. H x 17.9 in. W x 2.5 in D (320.3 mm x 454 mm x 63.6 mm)
Base (pedestal) size	0.75 in. H x 14 in. W x 6.75 in. D (1.9 cm x 35.6 cm x 17.1 cm)
Weight	16 lbs (7.26 kg)
Color	Grey/Blue
Desktop use	Integral base supports desktop use at +15° to -5° tilt Pedestal can raise or lower monitor in ten 9.5 mm (0.375 inch) increments for a total of 95 mm (3.75 inches).
Temperature	
Operating	+13°C to +35°C
Non-operating	-20°C to +60°C
Relative humidity	
Operating	10% to 85%, no condensation
Non-operating	5% to 90%, no condensation
Vibration (operating and non-operating)	0.3 G (2.9 m/s <sup>2</sup> ), 5-500 Hz sinusoidal wave
Shock (operating and non-op.)	10 G (98 m/s <sup>2</sup> ), 2 ms half-sinusoidal wave
Altitude (operating)	10,000 feet (3,048 m)

---

---

## Manufacturer's Regulatory Declarations

For detailed regulatory information, refer to Appendix A, "Statements of Compliance" at the end of this manual.

This product conforms to several national and international specifications and European Directives listed on the "Manufacturer's Declaration of Conformity." The CE insignia displayed on each device is an indication of conformity to the European requirements

**Caution:** This product has several governmental and third-party approvals, licenses, and permits. Do not modify this product in any way that is not expressly approved by Silicon Graphics. If you do, you may lose these approvals and your governmental agency authority to operate this device.

---

## Shielded Cables

The flat panel monitor is FCC-compliant under test conditions that include the use of shielded cables. Shielded cables reduce the possibility of interference with radio, television, and other devices. If you use any cables that are not from Silicon Graphics, make sure they are shielded.

The cable that attaches the flat panel monitor to your host computer or adapter board uses additional filtering molded into the cable jacket to reduce radio frequency interference. If your monitor cable becomes damaged, contact your service provider.

---

## **Electrostatic Discharge**

Silicon Graphics designs and tests its products to be immune to the effects of electrostatic discharge (ESD). ESD is a source of electromagnetic interference and can cause problems ranging from data errors and lockups to permanent component damage.

The shielded cable that attaches the flat panel monitor to your host system or adapter board should be correctly installed and in good condition.

## Appendix A

### Statements of Compliance

The following sections contain information about how the flat panel monitor complies with various regulatory agency rules.

---

---

#### FCC Class B Conformance

The following information is provided about the device covered in this manual in compliance with FCC regulations.

---

Trade Name	Silicon Graphics, Inc.
Product	Silicon Graphics 1600SW Flat Panel Monitor
Model Number	AM173Y01
Date of Conformance	September 1998
Responsible Party	Mitsubishi Inc.
Address	997 Miyoshi, Nishigoshi-Machi Kikuchi-Gun, Kumamoto, 861-1198
Telephone	81-96-242-5856

---

This equipment complies with Part 15 of the FCC Rules. Operation is subject to the following two conditions: (1) This device may not cause harmful interference, and (2) this device must accept any interference received, including interference that may cause undesired operation.

This equipment has been tested and found to comply with the limits for a Class B digital device, pursuant to Part 15 of the FCC Rules. These limits are designed to provide reasonable protection against harmful interference in a residential installation. This equipment generates, uses and can radiate radio frequency energy and, if not installed and used in accordance with the instructions, may cause harmful interference to radio communications. However, there is no guarantee that interference will not occur in a particular installation. If this equipment does cause harmful interference to radio or television reception, which can be determined by turning the equipment off and on, the user is encouraged to try to correct the interference by one or more of the following measures:

- Reorient or relocate the receiving antenna.
- Increase the separation between the equipment and receiver.
- Connect the equipment into an outlet on a circuit different from that to which the receiver is connected.
- Consult the dealer or an experienced radio/TV technician for help.

---

## **Electromagnetic Emissions**

This device complies with the Class B limits of Part 15 of the FCC Rules. Operation is subject to the following two conditions:

- This device may not cause harmful interference.
- This device must accept any interference received, including interference that may cause undesired operation.

Also, this device complies with Class B electromagnetic emissions limits of C.I.S.P.R. Publication 22, Limits and Methods of Measurement of Radio Interference Characteristics of Information Technology Equipment.





---

---

## ENERGY STAR

Silicon Graphics has determined that this product meets the ENERGY STAR guidelines for energy efficiency.



---

---

## TCO '95 Guidelines

This product complies with TCO '95 Guidelines.

---

---

## Industry Canada Notice (Canada Only)

This Class B digital apparatus meets all requirements of the Canadian Interference-Causing Equipment Regulations.

Cet appareil numérique n'émet pas de perturbations radioélectriques dépassant les normes applicables aux appareils numériques de Classe A prescrites dans le Règlement sur les interférences radioélectriques établi par le Ministère des Communications du Canada.

---

---

## CE Notice



Marking by the "CE" symbol indicates compliance of the device to directives of the European Community. A "Declaration of Conformity" in accordance with the above standards has been made and is available from Silicon Graphics upon request.

---

---

### **VCCI Notice (Japan Only)**

この装置は、第二種情報装置（住宅地域又はその隣接した地域において使用されるべき情報装置）で住宅地域での電波障害防止を目的とした情報処理装置等電波障害自主規制協議会（VCCI）基準に適合しております。

しかし、本装置をラジオ、テレビジョン受信機に近接してご使用になると、受信障害の原因となることがあります。

取扱説明書に従って正しい取り扱いをして下さい。  
VCCI-2、CISPR-22 Class B

---

---

### **Korean Regulatory Notice**

이 기기는 가정용으로 전자파적합등록  
을 한 기기로서 주거지역에서는 물론  
모든 지역에서 사용할 수 있습니다.

---

---

## **NOM 024 Information (Mexico Only)**

La información siguiente se proporciona en el dispositivo o en dispositivos descritos en este documento, en cumplimiento con los requisitos de la Norma Oficial Mexicana (NOM 024):

Exportador:	Mitsubishi, Inc.
Importador:	Silicon Graphics, Inc.
Embarcar a:	Av. Vasco de Quiroga No. 3000 Col. Santa Fe C.P. 01210 Mexico, D.F. Mexico
Tensión alimentación:	100/250 VAC
Frecuencia:	50/60 Hz
Consumo de corriente:	3 A @ 12 VDC

---

---

## **EN 55022 Compliance (Czech Republic Only)**

Pokud není na typovém štítku počítače uvedeno, že spadá do třídy A podle EN 55022, spadá automaticky do třídy B podle EN 55022. Pro zařízení zařazená do třídy A (ochranné pásmo 30m) podle EN 55022 platí následující. Dojde-li rušení telekomunikačních nebo jiných zařízení, je uživatel povinen provést taková opatření, aby rušení odstranil.

---

---

## Polish Notice (Poland Only)

Współpracujące ze sobą urządzenia (komputer, monitor, drukarka) powinny być zasilane z tego samego źródła.

Instalacja elektryczna pomieszczenia powinna zawierać w przewodzie fazowym rezerwową ochronę przed zwarciami, w postaci bezpiecznika o wartości znamionowej nie większej niż 10A (amperów).

W celu całkowitego wyłączenia urządzenia z sieci zasilania, należy wyjąć wtyczkę kabla zasilającego z gniazdka, które powinno znajdować się w pobliżu urządzenia i być łatwo dostępne.

### Pozostałe Instrukcje Bezpieczeństwa

- Nie należy używać wtyczek adapterowych lub usuwać kołka obwodu ochronnego z wtyczki. Jeżeli konieczne jest użycie przedłużacza to należy użyć przedłużacza 3-żyłowego z prawidłowo połączonym przewodem ochronnym.
- System komputerowy należy zabezpieczyć przed nagłymi, chwilowymi wzrostami lub spadkami napięcia, używając eliminatora przepięć, urządzenia dopasowującego lub bezzakłócenowego źródła zasilania.
- Należy upewnić się, aby nic nie leżało na kablach systemu komputerowego, oraz aby kable nie były umieszczone w miejscu, gdzie można byłoby na nie nadeptywać lub potykać się o nie.
- Nie należy rozlewać napojów ani innych płynów na system komputerowy.
- Nie należy wpychać żadnych przedmiotów do otworów systemu komputerowego, gdyż może to spowodować pożar lub porażenie prądem, poprzez zwarcie elementów wewnętrznych.
- System Komputerowy powinien znajdować się z dala od grzejników i źródeł ciepła. Ponadto, nie należy blokować otworów wentylacyjnych. Należy unikać kładzenia luźnych papierów pod komputer oraz umieszczania komputera w ciasnym miejscu bez możliwości cyrkulacji powietrza wokół niego.